

## Product datasheet for **RC231257**

### SEPTIN4 (NM\_001198713) Human Tagged ORF Clone

#### Product data:

Product Type:	Expression Plasmids
Product Name:	SEPTIN4 (NM_001198713) Human Tagged ORF Clone
Tag:	Myc-DDK
Symbol:	SEPTIN4
Synonyms:	ARTS; BRADEION; C17orf47; CE5B3; H5; hCDCREL-2; hucep-7; MART; PNU TL2; SEP4; SEPT4
Mammalian Cell Selection:	Neomycin
Vector:	pCMV6-Entry (PS100001)
E. coli Selection:	Kanamycin (25 ug/mL)



[View online »](#)

**ORF Nucleotide Sequence:**

>RC231257 representing NM\_001198713  
 Red=Cloning site Blue=ORF Green=Tags(s)

TTTTGTAATACGACTCACTATAGGGCGGCCGGAATTCGTCGACTGGATCCGGTACCGAGGAGATCTGCC  
 GCC**CGGATCGCC**

ATGCCTGGCTTCTACTCTGTTATGACAGATGAGGAGATCAAGCGTTTCCTGGAGGACACCACGGATGATG  
 GAGAACTGAGCAAGTTCGTGAAGGATTTCTCAGGAAATGCGAGCTGCCACCCACAGAGGCTAAGACCTG  
 GGATCCAGGCCCAAGTCCCGGAGCCAAGGCCCCAGGCCCGGACCTCTATGATGATGACCTGGAGTTC  
 AGACCCCTCGCGGCCAGTCTCTGACAACCAGCAGTACTTCTGTGCCCCAGCCCTCTCAGCCCAT  
 CTGCCAGGCCCGCAGCCATGGGGCAAGCTTGATCCCTATGATTCCTCTGAGGATGACAAGGAGTATGT  
 GGGCTTTGCAACCCTCCCAACCAAGTCCACCGAAAGTCCGTGAAGAAAGGCTTTGACTTTACCCTCATG  
 GTGGCAGGAGAGTCTGGCTGGGCAATCCACACTTGCAATAGCCTTCTCCTACTGATCTGTACCGGG  
 ACCGAAACTTCTTGGTCTGAAGAGAGGATCATGCAAACTGTGGAGATCACTAAGCATGCAGTGGACAT  
 AGAAGAGAAGGGTGTGAGGCTCGGCTCACCATTGTGGACACACCAGTTTTGGGATGCAGTCAACAAC  
 ACAGAGTCTGGAAGCCTGTGGCAGAATACATTGATCAGCAGTTTGGAGCAGTATTTCCGAGACGAGAGTG  
 GCCTGAACCGAAAAGAACATCCAAGACAACAGGGTGCACCTGCTGCCTGTACTTCATCTCACCTTCGGCCA  
 TGGGCTCCGGCCATTGGATGTTGAATTCATGAAGGCCCTGCATCAGCGGGTCAACATCGTGCCTATCCTG  
 GCTAAGGCAGACACACTGACACCTCCCGAAGTGGACCACAAGAAACGCAAAATCCGGGAGGAGATTGAGC  
 ATTTTGAATCAAGATCTATCAATCCCAGACTGTGACTCTGATGAGGATGAGGACTTCAAATTCAGGA  
 CCAAGCCCTAAGGAAAGCATCCATTTGCAGTAATTGGCAGCAACACTGTAGTAGAGCCAGAGGGCGG  
 CGATTCGGGGTCTACTACCCCTGGGCATCGTGAAGTGGAAAACCCAGGGCACTGCGACTTTGTGA  
 AGCTGAGGACAAATGCTGGTACGTACCCACATGCAGGACCTGAAGGATGTGACACGGGAGACACATTATGA  
 GAACTACCGGGCACAGTGCATCCAGAGCATGACCCGCTGGTGGTGAAGGAACGGAATCGCAACAACATG  
 ACTCGGAAAGTGGTACCGACTTCCCCATCCCTGCTGTCCACCAGGGACAGATCCAGAAACTGAGAAGC  
 TTATCCGAGAGAAAGATGAGGAGCTGCGCGGATGCAGGAGATGCTACACAAAATACAAAACAGATGAA  
 GGAGAATAT

**ACGCGT**ACGCGGCCGCTCGAGCAGAAACTCATCTCAGAAGAGGATCTGGCAGCAATGATATCCTGGATT  
 ACAAGGATGACGACGATAAGGTTTAA

**Protein Sequence:**

>RC231257 representing NM\_001198713  
 Red=Cloning site Green=Tags(s)

MPGFYSVMTDEEIKRFLEDTTDDGELSKFVKDFSGNASCHPPEAKTWASRPQVPEPRPQAPDLYDDLEF  
 RPPSRPQSSDNQYFCAPAPLSPSARPRSPWGKLDPYDSEDDKEYVGFATLPNQVHRKSVKKGDFDTLM  
 VAGESGLGKSTLVNSLFLTDLYRDRKLLGAEERIMQTVEITKHAVDIEEKGVRLRLTIVDTPGFDVANN  
 TECWKPVAEYIDQQFEQYFRDESLNRKNIQDNRVHCLYFISPFHGHLRPLDVEFMKALHQRVNIVPIL  
 AKADTLTPPEVDHKKRKIREEIEHFGIKIYQFPCDSDEDEDFKLQDQALKESIPFAVIGSNTVVEARGR  
 RVRGRLYPWGIVEVENPGHCDFVKLRTMLVRTHMQDLKDVTRETHYENYRAQCIQSMTRLVVKERNRNL  
 TRESGTDFFIPAVPPGTDPETEKLIREKDEELRRMQEMLHKIQKQMKENY

**TR**TRPLEQKLISEEDLAANDILDYKDDDDKV

**Chromatograms:**

[https://cdn.origene.com/chromatograms/mk8062\\_b02.zip](https://cdn.origene.com/chromatograms/mk8062_b02.zip)

**Restriction Sites:**

Sgfl-Mlul

**Cloning Scheme:**


**ACCN:** NM\_001198713

**ORF Size:** 1410 bp

**OTI Disclaimer:** The molecular sequence of this clone aligns with the gene accession number as a point of reference only. However, individual transcript sequences of the same gene can differ through naturally occurring variations (e.g. polymorphisms), each with its own valid existence. This clone is substantially in agreement with the reference, but a complete review of all prevailing variants is recommended prior to use. [More info](#)

**OTI Annotation:** This clone was engineered to express the complete ORF with an expression tag. Expression varies depending on the nature of the gene.

**Components:** The ORF clone is ion-exchange column purified and shipped in a 2D barcoded Matrix tube containing 10ug of transfection-ready, dried plasmid DNA (reconstitute with 100 ul of water).

**Reconstitution Method:**

1. Centrifuge at 5,000xg for 5min.
2. Carefully open the tube and add 100ul of sterile water to dissolve the DNA.
3. Close the tube and incubate for 10 minutes at room temperature.
4. Briefly vortex the tube and then do a quick spin (less than 5000xg) to concentrate the liquid at the bottom.
5. Store the suspended plasmid at -20°C. The DNA is stable for at least one year from date of shipping when stored at -20°C.

**RefSeq:** [NM\\_001198713.1](#), [NP\\_001185642.1](#)

**RefSeq ORF:** 1413 bp

**Locus ID:** 5414

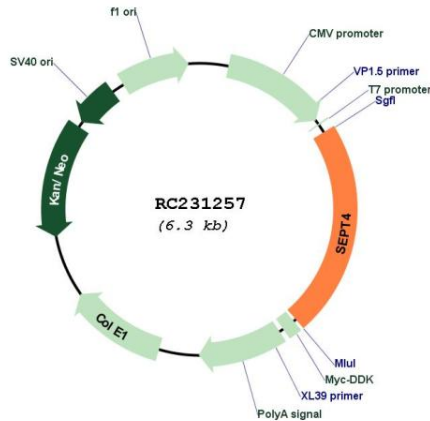
**UniProt ID:** [O43236](#)

**Cytogenetics:** 17q22

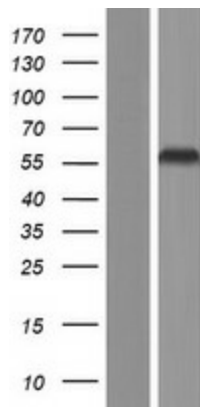
**MW:** 54.7 kDa

**Gene Summary:**

This gene is a member of the septin family of nucleotide binding proteins, originally described in yeast as cell division cycle regulatory proteins. Septins are highly conserved in yeast, *Drosophila*, and mouse, and appear to regulate cytoskeletal organization. Disruption of septin function disturbs cytokinesis and results in large multinucleate or polyploid cells. This gene is highly expressed in brain and heart. Alternatively spliced transcript variants encoding different isoforms have been described for this gene. One of the isoforms (known as ARTS) is distinct; it is localized to the mitochondria, and has a role in apoptosis and cancer. [provided by RefSeq, Nov 2010]

**Product images:**


Circular map for RC231257



Western blot validation of overexpression lysate (Cat# [LY434256]) using anti-DDK antibody (Cat# [TA50011-100]). Left: Cell lysates from untransfected HEK293T cells; Right: Cell lysates from HEK293T cells transfected with RC231257 using transfection reagent MegaTran 2.0 (Cat# [TT210002]).