

Product datasheet for **RC231256**

RbAp46 (RBBP7) (NM_001198719) Human Tagged ORF Clone

Product data:

Product Type:	Expression Plasmids
Product Name:	RbAp46 (RBBP7) (NM_001198719) Human Tagged ORF Clone
Tag:	Myc-DDK
Symbol:	RbAp46
Synonyms:	RbAp46
Mammalian Cell Selection:	Neomycin
Vector:	pCMV6-Entry (PS100001)
E. coli Selection:	Kanamycin (25 ug/mL)



[View online »](#)

ORF Nucleotide Sequence:

>RC231256 representing NM_001198719
 Red=Cloning site Blue=ORF Green=Tags(s)

TTTTGTAATACGACTCACTATAGGGCGGCCGGGAATTCGTCGACTGGATCCGGTACCGAGGAGATCTGCC
 GCC**CGGATCGCC**

ATGGCTGCCGAGGCGGGCGTCTGGGAGCTGGGCGCTCCCTGATGGGGATTGGAGAGACCAGGCCTGTG
 GGCTTCTGCTACACGTGCATTTGTCTCCGACTGGGTCGCGCAGCCCTGTACGTACAGTTCGTCATCT
 TAGAACAGTGTGTTGAAGATACTGTGGAGGAGCGTGCATCAATGAAGAATATAAAATCTGGAAGAAGAAT
 ACACCGTTTCTATATGACCTGGTTATGACCCATGCTCTTCAGTGGCCAGTCTTACCCTTCAGTGGCTTC
 CTGAAGTGACTAAACCTGAAGGAAAAGATTATGCCCTTCATTGGCTAGTGTGGGGACTCATACGCTCTGA
 TGAGCAGAATCATCTGGTGGTTCGAGTACATATCCCAATGATGATGCACAGTTTGTGCTCCCAT
 TGTGACAGTGACAAGGTGAATTTGGTGGCTTTGGTCTGTAACAGGAAAAATTGAATGTGAAATTA
 TCAATCACGAAGGAGAAGTAAACCGTCTCGTTACATGCCGAGAATCCTCACATCATTGTACAAAAAC
 ACCATCTTCTGATGTGTTGGTTTTGACTATACAAAACACCCTGCTAAACCAGACCAAGTGAGAAATGT
 AATCCTGATCTCAGATTAAGAGGTCAACGAGAAGGAAGGCTATGGTCTCTCTGGAATTCAAATTTGAGTG
 GACATCTCCTAAGTGCATCTGATGACCATACTGTTTGTCTGTGGGATATAAACGCAGGACAAAAAGAAGG
 CAAAATTTGGATGCTAAAGCCATCTTTACTGGCCACTCAGCTGTTGTAGAGGATGTGGCCTGGCACCTG
 CTGCACGAGTCATTGTTGGATCTGTTGCTGATGATCAGAACTTATGATATGGGACACCAGGTCCAATA
 CCACCTCCAAGCCGAGTCACTTGGTGGATGCGCACACTGCCGAAGTCAACTGCCTCTCATTCAATCCCTA
 CAGCGAATTTATTCTAGCCACCGGCTCTGCGGATAAGACCGTAGCTTTATGGGATCTGCGTAACTTAAAA
 TAAAACCTCCATACCTTCGAATCTCATAAAGTAAATTTCCAGTCCACTGGTCTCCATAATGAAA
 CTATTCTGGCTTCAAGTGGTACTGACCCCGCTGAATGTGGGATTTAAGTAAATTTGGGAAGAACA
 ATCAGCAGAAGATGCAGAAGATGGGCTCCAGAACTCCTGTTTATTCATGGAGGACACACTGCTAAGATT
 TCAGATTTTAGCTGGAACCCCAATGAGCCTTGGGTCATTTGCTCAGTGTCTGAGGATAACATCATGCAGA
 TATGGCAAATGGCTGAAAATATTTACAATGATGAAGAGTCAGATGTCACGACATCCGAACCTGGAGGGACA
 AGGATCT

ACGCGTACGCGGCCGCTCGAGCAGAACTCATCTCAGAAGAGGATCTGGCAGCAAATGATATCCTGGATT
 ACAAGGATGACGACGATAAGGTTTAA

Protein Sequence:

>RC231256 representing NM_001198719
 Red=Cloning site Green=Tags(s)

MAAEAGVVGAGASPDGDWRDQACGLLLHVHLSRLGRAAPVRTGRHLRTVFEDTVEERVINEEYKIWKKN
 TPFLYDLVMTHALQWPSLTVQWLPEVTKPEGKDYALHWLVGTHTSDEQNHVVVARVHIPNDDAQFDASH
 CDSDKGEFGGFGSVTKIECEIKINHEGEVNRARYMPQNPPIIATKTPSSDVLVFDYTKHPAKPDPSPGEC
 NPDRLRLRGHQKEGYGLSWNSNLSGHLLSASDDHTVCLWDINAGPKEGKIVDAKAIFTGHSVVEDVAWHL
 LHESLFGSVADDQKLMIWDRSNTTSKPSHLVDAHTAEVNCLSFNPYSEFILATGSADKTVLWDLRNLK
 LKLHTFESHKDEIFQVHWSPHNETILASSGTDRLNVWDL SKIGEEQSAEDAEDGPPPELLFIHGHTAKI
 SDFSWNPNEPWVICSVSEDNIMQIWQMAENIYNDEESDVTTSELEGQGS

TRTRPLEQKLISEEDLAANDILDYKDDDDKV

Chromatograms:

https://cdn.origene.com/chromatograms/mk8062_a07.zip

Restriction Sites:

SgfI-MluI

Cloning Scheme:


ACCN: NM_001198719

ORF Size: 1407 bp

OTI Disclaimer: The molecular sequence of this clone aligns with the gene accession number as a point of reference only. However, individual transcript sequences of the same gene can differ through naturally occurring variations (e.g. polymorphisms), each with its own valid existence. This clone is substantially in agreement with the reference, but a complete review of all prevailing variants is recommended prior to use. [More info](#)

OTI Annotation: This clone was engineered to express the complete ORF with an expression tag. Expression varies depending on the nature of the gene.

Components: The ORF clone is ion-exchange column purified and shipped in a 2D barcoded Matrix tube containing 10ug of transfection-ready, dried plasmid DNA (reconstitute with 100 ul of water).

Reconstitution Method:

1. Centrifuge at 5,000xg for 5min.
2. Carefully open the tube and add 100ul of sterile water to dissolve the DNA.
3. Close the tube and incubate for 10 minutes at room temperature.
4. Briefly vortex the tube and then do a quick spin (less than 5000xg) to concentrate the liquid at the bottom.
5. Store the suspended plasmid at -20°C. The DNA is stable for at least one year from date of shipping when stored at -20°C.

RefSeq: [NM_001198719.2](#)

RefSeq ORF: 1410 bp

Locus ID: 5931

UniProt ID: [Q16576](#)

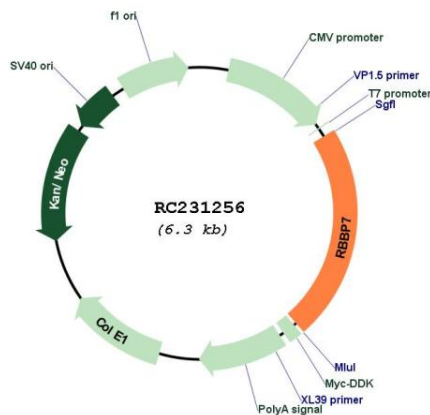
Cytogenetics: Xp22.2

Protein Families: Druggable Genome

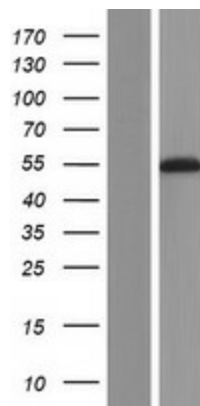
MW: 52.8 kDa

Gene Summary: This protein is a ubiquitously expressed nuclear protein and belongs to a highly conserved subfamily of WD-repeat proteins. It is found among several proteins that binds directly to retinoblastoma protein, which regulates cell proliferation. The encoded protein is found in many histone deacetylase complexes, including mSin3 co-repressor complex. It is also present in protein complexes involved in chromatin assembly. This protein can interact with BRCA1 tumor-suppressor gene and may have a role in the regulation of cell proliferation and differentiation. Two transcript variants encoding different isoforms have been found for this gene. [provided by RefSeq, Nov 2010]

Product images:



Circular map for RC231256



Western blot validation of overexpression lysate (Cat# [LY434255]) using anti-DDK antibody (Cat# [TA50011-100]). Left: Cell lysates from untransfected HEK293T cells; Right: Cell lysates from HEK293T cells transfected with RC231256 using transfection reagent MegaTran 2.0 (Cat# [TT210002]).