

## Product datasheet for **RC231252**

### TCF7L2 (NM\_001198531) Human Tagged ORF Clone

#### Product data:

Product Type:	Expression Plasmids
Product Name:	TCF7L2 (NM_001198531) Human Tagged ORF Clone
Tag:	Myc-DDK
Symbol:	TCF7L2
Synonyms:	TCF-4; TCF4
Mammalian Cell Selection:	Neomycin
Vector:	pCMV6-Entry (PS100001)
E. coli Selection:	Kanamycin (25 ug/mL)



[View online »](#)

**ORF Nucleotide Sequence:**

>RC231252 representing NM\_001198531  
 Red=Cloning site Blue=ORF Green=Tags(s)

TTTTGTAATACGACTCACTATAGGGCGGCCGGGAATTCGTCGACTGGATCCGGTACCGAGGAGATCTGCC  
 GCC**GCGATCGCC**

ATGCCGACGTGAACGGCGGTGGAGGGGATGACCTAGGCGCCAACGACGAACTGATTTCTTCAAAGACG  
 AGGGCGAACAGGAGGAGAAGAGCTCCGAAAACCTCTCGGCAGAGAGGGATTTAGCTGATGTCAAATCGTC  
 TCTAGTCAATGAATCAGAAACGAATCAAAACAGCTCCTCCGATTCGAGGCGGAAAGACGGCCTCCGCCCT  
 CGCTCCGAAAGTTTCCGAGACAAATCCCGGAAAGTTTGAAGAAGCGGCCAAGAGGCAAGATGGAGGGC  
 TCTTTAAGGGGCCACCGTATCCCGGCTACCCCTTCATCATGATCCCCGACCTGACGAGCCCTACCTCCC  
 CAACGGATCGCTCTCGCCACCGCCCGAACCTCCATTTTCAGTCCGGCAGCACACATTACTCTGCGTAC  
 AAAACGATTGAACACCAGATTGCAGTTCAGTATCTCCAGATGAAATGGCCACTGCTTGATGTCCAGGCAG  
 GGAGCCTCCAGAGTAGACAAGCCCTCAAGGATGCCCGGTCCCATCACCGGCACACATTGTCTTAACAA  
 AGTGCCAGTGGTGCAGCACCCCTCACCATGTCCACCCCTCAGCCCTTTATCACGTACAGCAATGAACAC  
 TTCACGCCGGAAACCCACCTCCACACTTACCAGCCGACGTAGACCCCAAACAGGAATCCACGGCCTC  
 CGCACCTCCAGATATATCCCCGTATTACCCACTATCGCCTGGCACCGTAGGACAATCCCCATCCGCT  
 AGGATGGTTAGTACCACAGCAAGGTCAACCAGTGTACCCAATCACGACAGGAGGATTCAGACACCCCTAC  
 CCCACAGCTCTGACCGTCAATGCTTCCATGTCCAGGTTCCCTCCCATATGGTCCCACCACATCATACGC  
 TACACACGACGGGCATCCGCATCCGGCCATAGTCACACCAACAGTCAAACAGGAATCGTCCCAGAGTGA  
 TGTCCGCTCACTCCATAGTTCAAAGCATCAGGACTCCAAAAGGAAGAAGAAAAGAAGAGCCACATA  
 AAGAAACCTCTTAATGCATTCATGTTGTATGAAGGAAATGAGAGCAAAGGTGCTAGCTGAGTGCACGT  
 TGAAGAAGCGCGGCCATCAACCAGATCCTTGGCGGAGGTGGCATGCACTGTCCAGAGAAGAGCAGC  
 GAAATACTACGAGCTGGCCCGGAAGGAGGACAGCTTCATATGCAACTGTACCCCGCTGGTCCCGCGCGG  
 GATAACTATGAAAGAAGAAGAAGAGGAAAAGGACAAGCAGCCGGGAGAGACCAATGGAGAAAAA  
 GTGCGTTCGCTACATACAAGGTGAAGGCAGCTGCCTCAGCCACCTCTTCAGATGGAAGCTTAC

**ACGCGT**ACGCGGCCGCTCGAGCAGAACTCATCTCAGAAGAGGATCTGGCAGCAAATGATATCCTGGATT  
 ACAAGGATGACGACGATAAGGTTTAA

**Protein Sequence:**

>RC231252 representing NM\_001198531  
 Red=Cloning site Green=Tags(s)

MPQLNGGGDDL GANDELISFKDEGEQEEKSSSENSAERDLADV KSSLVNESETNQSSSDSEARRPPP  
 RSEFRDKSRESLEEAARKQDGLFKGPPYPGYPFIMIPDLTSPYLPNGSL SPTARTLHFQSGSTHYSAY  
 KTIIEHQIAVQYLQMKWPLLDVQAGSLQSRQALKDARSPSPAHI VSNKVPVVQHPHHVHPL TPLITYSNEH  
 FTPGNPPPHLPADVDPKTGIPRPPHPPDISPYYP LSPGTVGQIPHPLGWLVPQQGPVYPI TTGGFRHPY  
 PTALTVNASMSRFPPHMVPPHHTLHTTGIPHPAIVTPTVKQESSQSDVGLHSSKHQDSKKEEKKPHI  
 KKPLNAFMLYMKEMRAKVVAECTLKESAAINQILGRRWHAL SREEQAKYELARKERQLHMQL YPGWSAR  
 DNYGKKKKRKRDKQPGETNGEKKSAFATYKVKAAASAHPLQMEAY

**TR**TRPLEQKLISEEDLAANDILDYKDDDDKV

**Chromatograms:**

[https://cdn.origene.com/chromatograms/mk8061\\_g08.zip](https://cdn.origene.com/chromatograms/mk8061_g08.zip)

**Restriction Sites:**

Sgfl-MluI

**Cloning Scheme:**


**ACCN:** NM\_001198531

**ORF Size:** 1395 bp

**OTI Disclaimer:** The molecular sequence of this clone aligns with the gene accession number as a point of reference only. However, individual transcript sequences of the same gene can differ through naturally occurring variations (e.g. polymorphisms), each with its own valid existence. This clone is substantially in agreement with the reference, but a complete review of all prevailing variants is recommended prior to use. [More info](#)

**OTI Annotation:** This clone was engineered to express the complete ORF with an expression tag. Expression varies depending on the nature of the gene.

**Components:** The ORF clone is ion-exchange column purified and shipped in a 2D barcoded Matrix tube containing 10ug of transfection-ready, dried plasmid DNA (reconstitute with 100 ul of water).

- Reconstitution Method:**
1. Centrifuge at 5,000xg for 5min.
  2. Carefully open the tube and add 100ul of sterile water to dissolve the DNA.
  3. Close the tube and incubate for 10 minutes at room temperature.
  4. Briefly vortex the tube and then do a quick spin (less than 5000xg) to concentrate the liquid at the bottom.
  5. Store the suspended plasmid at -20°C. The DNA is stable for at least one year from date of shipping when stored at -20°C.

**RefSeq:** [NM\\_001198531.2](#)

**RefSeq ORF:** 1398 bp

**Locus ID:** 6934

**UniProt ID:** [Q9NQB0](#)

**Cytogenetics:** 10q25.2-q25.3

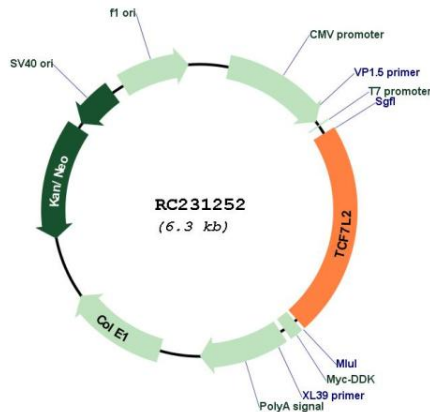
**Protein Families:** Druggable Genome, Transcription Factors

**Protein Pathways:** Acute myeloid leukemia, Adherens junction, Arrhythmogenic right ventricular cardiomyopathy (ARVC), Basal cell carcinoma, Colorectal cancer, Endometrial cancer, Melanogenesis, Pathways in cancer, Prostate cancer, Thyroid cancer, Wnt signaling pathway

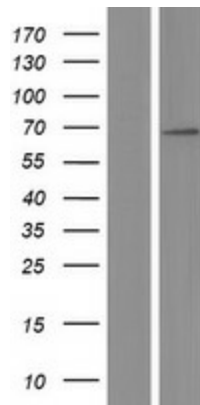
**MW:** 52.2 kDa

**Gene Summary:** This gene encodes a high mobility group (HMG) box-containing transcription factor that plays a key role in the Wnt signaling pathway. The protein has been implicated in blood glucose homeostasis. Genetic variants of this gene are associated with increased risk of type 2 diabetes. Several transcript variants encoding multiple different isoforms have been found for this gene.[provided by RefSeq, Oct 2010]

**Product images:**



Circular map for RC231252



Western blot validation of overexpression lysate (Cat# [LY434251]) using anti-DDK antibody (Cat# [TA50011-100]). Left: Cell lysates from untransfected HEK293T cells; Right: Cell lysates from HEK293T cells transfected with RC231252 using transfection reagent MegaTran 2.0 (Cat# [TT210002]).