

Product datasheet for **RC231251**

SERINC2 (NM_001199038) Human Tagged ORF Clone

Product data:

Product Type:	Expression Plasmids
Product Name:	SERINC2 (NM_001199038) Human Tagged ORF Clone
Tag:	Myc-DDK
Symbol:	SERINC2
Synonyms:	FKSG84; PRO0899; TDE2; TDE2L
Mammalian Cell Selection:	Neomycin
Vector:	pCMV6-Entry (PS100001)
E. coli Selection:	Kanamycin (25 ug/mL)



[View online »](#)

ORF Nucleotide Sequence:

>RC231251 representing NM_001199038
 Red=Cloning site Blue=ORF Green=Tags(s)

TTTTGTAATACGACTCACTATAGGGCGGCCGGGAATTCGTCGACTGGATCCGGTACCGAGGAGATCTGCC
 GCC**CGGATCGCC**

ATGGACGGGAGGATGATGAGAAGCATGAGGCTGAGAGAGGAGGAGTCACCCGGACCCAGCCACACAGCGT
 CCTGCCTCTGCGGCTCTGCCCCCTGCATCCTGTGCAGCTGCTGCCCGCCAGCCGCAACTCCACCGTGAG
 CCGCCTCATCTTACAGTTCTTCTCTTCTGGGGTGCTGGTGTCCATCATTATGCTGAGCCCGGGCGTG
 GAGAGTCAGTCTACAAGCTGCCCTGGGTGTGTGAGGAGGGGGCCGGGATCCCCACCGTCTGCAGGGCC
 ACATCGACTGTGGCTCCCTGCTTGGCTACCGCGCTGTCTACCGCATGTGCTTCGCCACGGCGCCTTCTT
 CTTCTTTTTACCCTGCTCATGCTCTGCGTGAGCAGCAGCCGGGACCCCGGGCTGCCATCCAGAATGGG
 TTTTGGTCTTTAAGTTCCTGATCCTGGTGGCCCTCACCGTGGTGCCTTCTACATTCTGACGGCTCCT
 TCACCAACATCTGGTCTACTTCGGCGTCTGGGCTCCTTCTCTTATCCTCATCCAGCTGGTGTGCTGCT
 CATCGACTTTGCGCACTCCTGGAACCAGCGGTGGCTGGCAAGGCCGAGGAGTGGATTCCCGTGCCTGG
 TACGCAGGCCTCTTCTTCTCACTCTCCTTCTACTTGTGTGATCGCGGCCGTGGCGCTGATGTTCA
 TGTACTACACTGAGCCCAGCGGCTGCCACGAGGGCAAGGTCTTATCAGCCTCAACCTCACCTTCTGTGT
 CTGCGTGTCCATCGCTGTCTGCTGCCAAGGTCCAGGACGCCAGCCAACTCGGGTCTGCTGCAGGCC
 TCGGTCATCACCTCTACACCATGTTTGTACCTGGTCAGCCCTATCCAGTATCCCTGAACAGAAATGCA
 ACCCCATTGCAACCCAGCTGGGCAACGAGACAGTTGTGGCAGGCCCGAGGGCTATGAGACCCAGTG
 GTGGGATGCCCGAGCATTGTGGGCTCATCATCTTCTCCTGTGCACCTCTTATCAGTCTGCGCTCC
 TCAGACCACCGGAGGTGAACAGCCTGATGCAGACCGAGGAGTGGCCACCTATGCTAGACGCCACACAGC
 AGCAGCAGCAGGTGGCAGCCTGTGAGGGCCGGGCTTTGACAACGAGCAGGACGGCGTCACTACAGTA
 CTCTTCTTCCACTTCTGCCTGGTGTGGCCTCACTGCACGTCATGATGACGCTCACCAACTGGTACAAG
 CCCGGTGAACCCGAAGATGATCAGCAGTGGACCGCCGTGGGTGAAGATCTGTGCCAGCTGGGCGAG
 GGCTGCTCCTCTACTGTGGACCCTGGTAGCCCACTCCTCTGCGCAACCGCGACTTCAGC

ACGCGTACGCGGCCGCTCGAGCAGAACTCATCTCAGAAGAGGATCTGGCAGCAAATGATATCCTGGATT
 ACAAGGATGACGACGATAAGGTTTAA

Protein Sequence:

>RC231251 representing NM_001199038
 Red=Cloning site Green=Tags(s)

MDGRMMRSMRLREEESPGPSHTASCLCGSAPCILCSCCPASRNSTVSRLIFTFLLFLGVLVSIIMLSPGV
 ESQLYKLPWVCEEGAGIPTVLQGHIDCGSLLGYRAVYRMCFAAAFFFTLLMLCVSSSRDPRAAIQNG
 FWFKFLILVGLTVGAFYIPDGSFTNIWFYFGVGSFLFILIQLVLLIDFAHSWNQRWLGAEECDRAW
 YAGLFFFTLLFYLLSIAAVALMFMYTEPSGCHEGKVFISLNLTFVCVSVIAAVLPKVQDAQPNGLLQA
 SVITLYTMFVTWSALSSIPEQKCNPHLPTQLGNETVVAGPEGYETQWWDAPSIVGLIIFLLCTLFISLRS
 SDHRQVNSLMQTEECPPMLDATQQQQVAACEGRAFDNEQDGVTSYSFFHFCLVLASLHVMMTLTNWYK
 PGETRKMISTWTAVWVKICASWAGLLLYLWTLVAPLLLRNDRFS

TRTRPLEQKLISEEDLAANDILDYKDDDDKV

Chromatograms:

https://cdn.origene.com/chromatograms/mk8061_g03.zip

Restriction Sites:

Sgfl-Mlul

Cloning Scheme:


ACCN: NM_001199038

ORF Size: 1392 bp

OTI Disclaimer: The molecular sequence of this clone aligns with the gene accession number as a point of reference only. However, individual transcript sequences of the same gene can differ through naturally occurring variations (e.g. polymorphisms), each with its own valid existence. This clone is substantially in agreement with the reference, but a complete review of all prevailing variants is recommended prior to use. [More info](#)

OTI Annotation: This clone was engineered to express the complete ORF with an expression tag. Expression varies depending on the nature of the gene.

Components: The ORF clone is ion-exchange column purified and shipped in a 2D barcoded Matrix tube containing 10ug of transfection-ready, dried plasmid DNA (reconstitute with 100 ul of water).

Reconstitution Method:

1. Centrifuge at 5,000xg for 5min.
2. Carefully open the tube and add 100ul of sterile water to dissolve the DNA.
3. Close the tube and incubate for 10 minutes at room temperature.
4. Briefly vortex the tube and then do a quick spin (less than 5000xg) to concentrate the liquid at the bottom.
5. Store the suspended plasmid at -20°C. The DNA is stable for at least one year from date of shipping when stored at -20°C.

RefSeq: [NM_001199038.2](#)

RefSeq ORF: 1395 bp

Locus ID: 347735

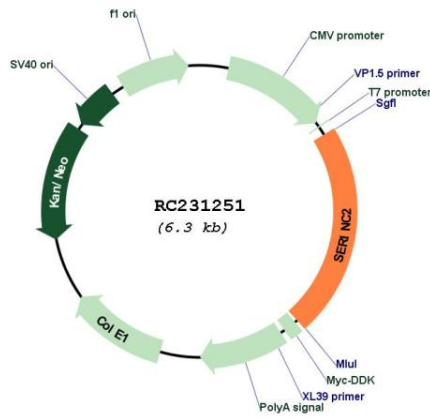
UniProt ID: [Q96SA4](#)

Cytogenetics: 1p35.2

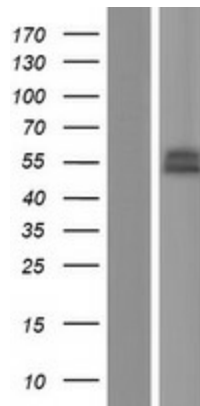
Protein Families: Transmembrane

MW: 52.6 kDa

Product images:



Circular map for RC231251



Western blot validation of overexpression lysate (Cat# [LY434250]) using anti-DDK antibody (Cat# [TA50011-100]). Left: Cell lysates from untransfected HEK293T cells; Right: Cell lysates from HEK293T cells transfected with RC231251 using transfection reagent MegaTran 2.0 (Cat# [TT210002]).