

Product datasheet for **RC231249**

SERINC2 (NM_018565) Human Tagged ORF Clone

Product data:

Product Type:	Expression Plasmids
Product Name:	SERINC2 (NM_018565) Human Tagged ORF Clone
Tag:	Myc-DDK
Symbol:	SERINC2
Synonyms:	FKSG84; PRO0899; TDE2; TDE2L
Mammalian Cell Selection:	Neomycin
Vector:	pCMV6-Entry (PS100001)
E. coli Selection:	Kanamycin (25 ug/mL)



[View online »](#)

ORF Nucleotide Sequence:

>RC231249 representing NM_018565
 Red=Cloning site Blue=ORF Green=Tags(s)

TTTTGTAATACGACTCACTATAGGGCGGCCGGGAATTCGTCGACTGGATCCGGTACCGAGGAGATCTGCC
 GCC**CGGATCGCC**

ATGGGAGCGGAGGAGCCCGGACTTTCTTAGCTGCCCTCGAGTGAGCGGGCGTCTGCCTCTGCGGCT
 CTGCCCCCTGCATCCTGTGCAGCTGCTGCCCGCCAGCCGCAACTCCACGTGAGCCGCCTCATCTTCAC
 GTTCTTCTCTTCTGGGGGTGCTGGTGTCCATCATTATGCTGAGCCCGGGCGTGAGAGTCACTGCTAC
 AAGCTGCCCTGGGTGTGTGAGGAGGGGGCCGGATCCCCACCGTCTGCAGGGCCACATCGACTGTGGCT
 CCCTGCTTGGCTACCGCGCTGTCTACCGCATGTGCTTCGCCACGGCGGCCTTCTTCTTTTCCACCT
 GCTCATGCTCTGCGTGAGCAGCAGCCGGGACCCCGGGCTGCCATCCAGAATGGGTTTTGGTTCTTTAAG
 TTCCTGATCCTGGTGGGCTCACCGTGGTGCCTTCTACATTCTGACGGCTCCTCACCAACATCTGGT
 TCTACTTCGGCGTCTGGGCTCCTTCTTCTCATCCTCATCCAGCTGGTGTCTCATCGACTTTGCGCA
 CTCTGGAACAGCGGTGGCTGGCAAGGCCGAGGAGTGGATTCCCGTGCCTGGTACGACGGCCTTCTC
 TTCTTCACTCTCCTTCTACTTGTGTGATCGCGGCCGTGGCGCTGATGTTACTGACTACACTGAGC
 CCAGCGGTGCCACGAGGGCAAGGTCTTCATCAGCCTAACCTCACCTTCTGTGTCTGCGTGTCCATCGC
 TGCTGTCTGCCAAGGTCCAGGACGCCAGCCAACTCGGGTCTGCTGCAGGCCTCGGTATCACCCCTC
 TACACCATGTTTGTACCTGGTCAAGCCATCCAGTATCCCTGAACAGAAATGCAACCCCATTTGCCAA
 CCCAGCTGGGCAACGAGACAGTTGTGGCAGGCCCGAGGGCTATGAGACCCAGTGGTGGGATGCCCGAG
 CATTGTGGGCTCATCATCTTCTCCTGTGCACCTTTCATCAGTCTGCGCTCCTCAGACCACCGGCGAG
 GTGAACAGCCTGATGCAGACCGAGGAGTCCCACCTATGCTAGACGCCACACAGCAGCAGCAGGAGTGG
 CAGCCTGTGAGGGCCGGGCTTTGACAACGAGCAGGACGGCGTCACTACAGTACTCCTTCTTCCACTT
 CTGCCTGGTGTGGCCTCACTGCACGTATGACGCTCACCACTGGTACAAGCCCGGTGAGACCCGG
 AAGATGATCAGCAGTGGACCGCGTGTGGTGAAGATCTGTGCCAGTGGGAGGGCTGCTCCTTACC
 TGTGGACCCTGGTAGCCCACTCCTCTGCGCAACCGGACTTCAGC

ACGCGTACGCGGCCGCTCGAGCAGAACTCATCTCAGAAGAGGATCTGGCAGCAAATGATATCCTGGATT
 ACAAGGATGACGACGATAAGGTTTAA

Protein Sequence:

>RC231249 representing NM_018565
 Red=Cloning site Green=Tags(s)

MGAEGAPDFLSCPRVRRASCLCGSAPCILCSCCPASRNSTVSRLIFTFLLFLGVLVSIIMLSPGVESQLY
 KLPWVCEEAGIPTVLQGHIDCGSLLGYRAVYRMCFAAFFFFFTLLMLCVSSSRDPRAAIQNGFWFFK
 FLILVGLTVGAFYIPDGSFTNIWFYFGVVSFLFILIQLVLLIDFAHSWNQRWLGKAEECDSRAWYAGLF
 FFTLLFYLLSIAAVALMFMYYTEPSGCHEGKVFISLNLTFVCVSVIAAVLPKVQDAQPNISGLLQASVITL
 YTMFVTWSALSSIPEQKCNPHLPTQLGNETVVAGPEGYETQWWDAPSIVGLIIFLLCTLFISLRSSDHRQ
 VNLSMQTEECPPMLDATQQQQVAACEGRAFDNEQDGVYYSYFFHFCLVLASLHVMMTLTNWYKPGETR
 KMISTWTAVWVKICASWAGLLLYLWTLVAPLLLRNDRFS

TRTRPLEQKLISEEDLAANDILDYKDDDDKV

Chromatograms:

https://cdn.origene.com/chromatograms/mk8061_d06.zip

Restriction Sites:

Sgfl-MluI

Cloning Scheme:


ACCN: NM_018565

ORF Size: 1377 bp

OTI Disclaimer: The molecular sequence of this clone aligns with the gene accession number as a point of reference only. However, individual transcript sequences of the same gene can differ through naturally occurring variations (e.g. polymorphisms), each with its own valid existence. This clone is substantially in agreement with the reference, but a complete review of all prevailing variants is recommended prior to use. [More info](#)

OTI Annotation: This clone was engineered to express the complete ORF with an expression tag. Expression varies depending on the nature of the gene.

Components: The ORF clone is ion-exchange column purified and shipped in a 2D barcoded Matrix tube containing 10ug of transfection-ready, dried plasmid DNA (reconstitute with 100 ul of water).

Reconstitution Method:

1. Centrifuge at 5,000xg for 5min.
2. Carefully open the tube and add 100ul of sterile water to dissolve the DNA.
3. Close the tube and incubate for 10 minutes at room temperature.
4. Briefly vortex the tube and then do a quick spin (less than 5000xg) to concentrate the liquid at the bottom.
5. Store the suspended plasmid at -20°C. The DNA is stable for at least one year from date of shipping when stored at -20°C.

RefSeq: [NM_018565.3](#), [NP_061035.2](#)

RefSeq ORF: 1380 bp

Locus ID: 347735

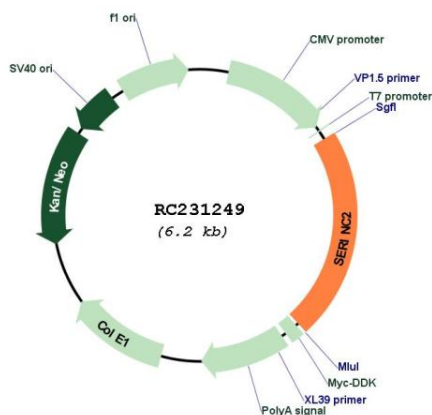
UniProt ID: [Q96SA4](#)

Cytogenetics: 1p35.2

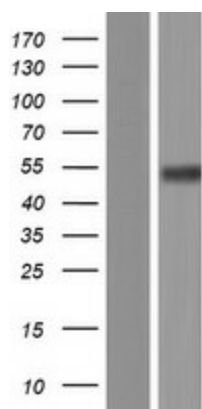
Protein Families: Transmembrane

MW: 51.8 kDa

Product images:



Circular map for RC231249



Western blot validation of overexpression lysate (Cat# [LY434248]) using anti-DDK antibody (Cat# [TA50011-100]). Left: Cell lysates from untransfected HEK293T cells; Right: Cell lysates from HEK293T cells transfected with RC231249 using transfection reagent MegaTran 2.0 (Cat# [TT210002]).