

Product datasheet for **RC231247**

FAPP2 (PLEKHA8) (NM_001197027) Human Tagged ORF Clone

Product data:

Product Type:	Expression Plasmids
Product Name:	FAPP2 (PLEKHA8) (NM_001197027) Human Tagged ORF Clone
Tag:	Myc-DDK
Symbol:	FAPP2
Synonyms:	FAPP2
Mammalian Cell Selection:	Neomycin
Vector:	pCMV6-Entry (PS100001)
E. coli Selection:	Kanamycin (25 ug/mL)



[View online »](#)

ORF Nucleotide Sequence:

>RC231247 representing NM_001197027
 Red=Cloning site Blue=ORF Green=Tags(s)

TTTTGTAATACGACTCACTATAGGGCGGCCGGAATTCGTCGACTGGATCCGGTACCGAGGAGATCTGCC
 GCC**CGGATCGCC**

ATGGAGGGGGTGTCTACAAGTGGACCAACTATCTGAGCGGTTGGCAGCCTCGATGGTTCCTTCTGTG
 GGGGAATTATTGTCTATTATGATTCTCCTGAAGATGCCTGGAAAAGTTGCAAAGGGAGCATACAAATGGC
 AGTCTGTGAAATCAAGTTCATTCTGTAGATAATACACGCATGGACCTGATAATCCCTGGGGAACAGTAT
 TTCTACCTGAAGGCCAGAAGTGTGGCTGAAAGACAGCGGTGGCTGGTGGCCCTGGGATCAGCCAAGGCTT
 GCCTGACTGACAGTAGGACCCAGAAGGAGAAAGAGTTTGTGAAAACTGAAAACCTGAAAACCAAAAT
 GTCAGAATAAGACTCTACTGTGACCTCCTTGTTCAGCAAGTAGATAAAAACAAAAGAGTACCACAACCT
 GGTGTGTCCAATTCTGAGGAGGGAATTGATGTGGGAACTTTGTGAAATCAACCTGTAATACTTTTCTGA
 AGACCTTGAAGAATGCATGCAGATCGCAAATGCAGCCTTACCTCTGAGCTGCTCTACCGACTCCACC
 AGGATCACCTCAGCTGGCCATGCTCAAGTCCAGCAAGATGAAACATCCTATTATACCAATTCATAATTCA
 TTGGAAAAGCAAATGGAGTTGAGCACTTGTGAAAATGGATCTTTAAATATGGAAATAAATGGTGAGGAAG
 AAATCCTAATGAAAAATAAGAATTCCTTATATTTGAAATCTGCAGAGATAGACTGCAGCATATCAAGTGA
 GGAAAAACAGATGATAATATAACAGTCCAAGGTGAAATAAGGAAGGAAGATGGAATGGAAAACCTGAAA
 AATCATGACAATAACTTGACTCAGTCTGGATCAGACTCAAGTTGCTCTCCGGAATGCCTCTGGGAGGAAG
 GCAAAGAAGTTATCCCACTTTCTTTAGTACCATGAACACAAGCTTTAGTGACATTGAACTTCTGGAGA
 CAGTGGCATTCCACAGAAGCATTCTGGCATCATGTTATGCTGTGGTCCAGTATTAGACAAACTTGGC
 CCTACAGTGTTTGCTCCTGTTAAGATGGATCTTGTGGAAATATAAGAAAGTAAATCAGAAGTATATAA
 CCAACAAGAAGAGTTTACCCTCTCCAGAAGATAGTGTGCACGAAGTGGAGGGGATGTAGCCCGAGT
 TAGGAACCTCAGCGACTGAAGCCCTCTTGTGGCTGAAGAGAGGTCTCAAATTTTTGAAGGGATTTTTGACA
 GAAGTAAAAATGGGAGAAGGATATCCAGACAGCCCTAAATAATGCATATGGTAAAACATTGCGGCAAC
 ACCATGGCTGGTGTAGTTCGAGGGTTTTTGCAGGACACACAAATGTC

ACGCGTACGCGGCCGCTCGAGCAGAACTCATCTCAGAAGAGGATCTGGCAGCAAATGATATCCTGGATT
 ACAAGGATGACGACGATAAGGTTTAA

Protein Sequence:

>RC231247 representing NM_001197027
 Red=Cloning site Green=Tags(s)

MEGVLYKWTNYLSGWQPRWFLLCGGILSYDSPEDAWKGCKGSIQMAVCEIQVHSVNDNTRMDLIIPGEQY
 FYLKARSVAERQRWLVALGSAKACLDSRTQKEKEFAENTENLTKMSELRLYCDLLVQQVDKTKEVTTT
 GVSNSEEGIDVGTLLKSTCNTFLKLEECMQIANAAFTSELLYRTPPGSPQLAMLKSSKMKHPIPIHNS
 LERQMELSTCENGLNMEINGEEEEILMKNKNSLYLKSAEIDCSI SSEENTDDNITVQGEIRKEDGMENLK
 NHDNLLTQSGSDSSCSPECLWEEGKEVIPTFSTMNTSFSIDIELLEDGIPTEAFLASCYAVVPVLDKLG
 PTVFAPVKMDLVGNIKKVNQKYITNKEEFTTLQKIVLHEVEADVAQVRNSATEALLWLKRGLKFLKGFLT
 EVKNGEKDIQTALNNAYGKTLRQHGWVVRGVFAGHTNV

TRTRPLEQKLISEEDLAANDILDYKDDDDKV

Chromatograms:

https://cdn.origene.com/chromatograms/mk8061_d04.zip

Restriction Sites:

Sgfl-Mlul

Cloning Scheme:



ACCN: NM_001197027

ORF Size: 1377 bp

OTI Disclaimer: The molecular sequence of this clone aligns with the gene accession number as a point of reference only. However, individual transcript sequences of the same gene can differ through naturally occurring variations (e.g. polymorphisms), each with its own valid existence. This clone is substantially in agreement with the reference, but a complete review of all prevailing variants is recommended prior to use. [More info](#)

OTI Annotation: This clone was engineered to express the complete ORF with an expression tag. Expression varies depending on the nature of the gene.

Components: The ORF clone is ion-exchange column purified and shipped in a 2D barcoded Matrix tube containing 10ug of transfection-ready, dried plasmid DNA (reconstitute with 100 ul of water).

Reconstitution Method:

1. Centrifuge at 5,000xg for 5min.
2. Carefully open the tube and add 100ul of sterile water to dissolve the DNA.
3. Close the tube and incubate for 10 minutes at room temperature.
4. Briefly vortex the tube and then do a quick spin (less than 5000xg) to concentrate the liquid at the bottom.
5. Store the suspended plasmid at -20°C. The DNA is stable for at least one year from date of shipping when stored at -20°C.

RefSeq: [NM_001197027.1](#), [NP_001183956.1](#)

RefSeq ORF: 1380 bp

Locus ID: 84725

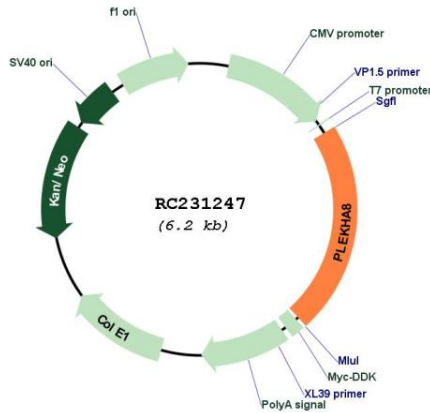
UniProt ID: [Q96JA3](#)

Cytogenetics: 7p14.3

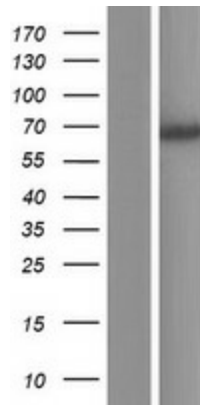
MW: 52 kDa

Gene Summary:

Cargo transport protein that is required for apical transport from the Golgi complex. Transports AQP2 from the trans-Golgi network (TGN) to sites of AQP2 phosphorylation. Mediates the non-vesicular transport of glucosylceramide (GlcCer) from the trans-Golgi network (TGN) to the plasma membrane and plays a pivotal role in the synthesis of complex glycosphingolipids. Binding of both phosphatidylinositol 4-phosphate (PIP) and ARF1 are essential for the GlcCer transfer ability. Also required for primary cilium formation, possibly by being involved in the transport of raft lipids to the apical membrane, and for membrane tubulation.[UniProtKB/Swiss-Prot Function]

Product images:


Circular map for RC231247



Western blot validation of overexpression lysate (Cat# [LY434246]) using anti-DDK antibody (Cat# [TA50011-100]). Left: Cell lysates from untransfected HEK293T cells; Right: Cell lysates from HEK293T cells transfected with RC231247 using transfection reagent MegaTran 2.0 (Cat# [TT210002]).