

## Product datasheet for **RC231242**

### **GPR177 (WLS) (NM\_001193334) Human Tagged ORF Clone**

#### **Product data:**

Product Type:	Expression Plasmids
Product Name:	GPR177 (WLS) (NM_001193334) Human Tagged ORF Clone
Tag:	Myc-DDK
Symbol:	GPR177
Synonyms:	C1orf139; EVI; GPR177; mig-14; MRP
Mammalian Cell Selection:	Neomycin
Vector:	pCMV6-Entry (PS100001)
E. coli Selection:	Kanamycin (25 ug/mL)



[View online »](#)

**ORF Nucleotide Sequence:**

>RC231242 representing NM\_001193334  
 Red=Cloning site Blue=ORF Green=Tags(s)

TTTTGTAATACGACTCACTATAGGGCGGCCGGGAATTCGTCGACTGGATCCGGTACCGAGGAGATCTGCC  
 GCC**CGATCGCC**

ATGGCTGGGGCAATTATAGAAAACATGAGCACCAAGAAGCTGTGCATTGTTGGTGGGATTCTGCTCGTGT  
 TCCAAATCATCGCCTTTCTGGTGGGAGGCTTGATTGGAGAAAATGCAGAAGTCTCCATGGACGTTTCCCT  
 GGCTTACCGTGATGACGCGTTTGTCTGAGTGGACTGAAATGGCCCATGAAAGAGTACCACGGAAACTCAAA  
 TGCACCTTACATCTCCCAAGACTCCAGAGCATGAGGGCCGTTACTATGAATGTGATGTCCTTCTTTCA  
 TGGAAATTGGGTCTGTGGCCATAAGTTTTACCTTTTAAACATCCGGCTGCCTGTGAATGAGAAGAAGAA  
 AATCAATGTGGGAATTGGGGAGATAAAGGATATCCGGTTGGTGGGGATCCACCAAATGGAGGCTTACC  
 AAGGTGTGGTTTGCATGAAGACCTTCTTACGCCAGCATCTTCATCATTATGGTGTGGTATTGGAGGA  
 GGATCACCATGATGTCCGACCCCCAGTCTTCTGGAAAAAGTCATCTTTGCCCTGGGATTTCCATGAC  
 CTTTATCAATATCCAGTGAATGGTTTTCCATCGGGTTTACTGGACCTGGATGCTGCTGTTTGGTGTGAC  
 ATCCGACAGGGCATCTTCTATGCGATGCTTCTGTCTTCTGGATCATCTTCTGTGGCGAGACATGATGG  
 ATCAGCACGAGCGGAACACATCGCAGGGTATTGGAAGCAAGTCGGACCCATTGCCGTTGGCTCCTTCTG  
 CCTCTTCAATTTGACATGTGTGAGAGGGGTACAACACTCACGAATCCCTTCTACAGTATCTGGACTACA  
 GACATTGGAACAGAGCTGGCCATGGCCTTCATCATCGTGGCTGGAATCTGCCTCTGCCTCTACTTCTGT  
 TTCTATGCTTTCATGGTATTTTCAGGTGTTTCGGAACATCAGTGGGAAGCAGTCCAGCCTGCCAGCTATGAG  
 CAAAGTCCGGCGCTACACTATGAGGGGCTAATTTTTAGGTTCAAGTTCTCATGCTTATCACCTTGGCC  
 TGCCTGCCATGACTGTATCTTCTTTCATCGTTAGTCAGGTAACGGAAGGCCATTGGAAATGGGGCGGCC  
 TCACAGTCCAAGTGAACAGTGCCTTTTTACAGGCATCTATGGGATGTGGAAATCTGTATGCTTTTGTCT  
 GATGTTCTTGTATGCACCATCCATAAAAACTATGGAGAAGACCAGTCCAATGGCGATCTGGGTGTCCAT  
 AGTGGGAAGAAGTCCAGCTCACCACTATCACCCATGTGGACGGACCCACTGAGATCTACAAGTTGA  
 CCCGAAGGAGGCCAGGAG

AG**CGGACCG**ACGCGTACGCGGCCGCTCGAGCAGAAACTCATCTCAGAAGAGGATCTGGCAGCAAATGATATCC  
 TGGATTACAAGGATGACGACGATAAGGTTTAA

**Protein Sequence:**

>RC231242 representing NM\_001193334  
 Red=Cloning site Green=Tags(s)

MAGAIENMSTKKLCIVGGILLVFQIIAFLVGGIIGENAEVSMVSLAYRDDAFEAWTEMAHERVPRKLL  
 CTFTSPKTPEHEGRYYECDVLPFMEIGSVAHKFYLLNIRLPVNEKKKINVGIGEIKDIRLVGIHQNGGFT  
 KVWFAMKTFLLTPSIFIIIMVWYRRITMMSRPPVLEKVFIFALGISMTFINIPVEWF SIGFDWTWMLLFGD  
 IRQGIIFYAMLLSFWIIFCGEHMDQHERNHIAGYWKQVGPIAVGSFCLFIFDMCERGVQLTNPFIYIWT  
 DIGTELAMAFIIVAGICLCLYFLFCFMVFQVFRNISGKQSSLPAMSKVRRRLHYEGLIFRFKFLMLITLA  
 CAAMTVIFFIVSQVTEGHWKWGGVTVQVNSAFFTGIYGMWNLVYFALMFLYAPSHKNYGEDQSNGLGVH  
 SGEELQLTTTITHVDGPTEIYKLTRKEAQE

**SGP**TRRRLE**QKLI**SEEDLAANDILDYKDDDDKV

**Chromatograms:**

[https://cdn.origene.com/chromatograms/mk8060\\_g09.zip](https://cdn.origene.com/chromatograms/mk8060_g09.zip)

**Restriction Sites:**

Sgfl-RsrII

**Cloning Scheme:**


**ACCN:** NM\_001193334

**ORF Size:** 1350 bp

**OTI Disclaimer:** The molecular sequence of this clone aligns with the gene accession number as a point of reference only. However, individual transcript sequences of the same gene can differ through naturally occurring variations (e.g. polymorphisms), each with its own valid existence. This clone is substantially in agreement with the reference, but a complete review of all prevailing variants is recommended prior to use. [More info](#)

**OTI Annotation:** This clone was engineered to express the complete ORF with an expression tag. Expression varies depending on the nature of the gene.

**Components:** The ORF clone is ion-exchange column purified and shipped in a 2D barcoded Matrix tube containing 10ug of transfection-ready, dried plasmid DNA (reconstitute with 100 ul of water).

- Reconstitution Method:**
1. Centrifuge at 5,000xg for 5min.
  2. Carefully open the tube and add 100ul of sterile water to dissolve the DNA.
  3. Close the tube and incubate for 10 minutes at room temperature.
  4. Briefly vortex the tube and then do a quick spin (less than 5000xg) to concentrate the liquid at the bottom.
  5. Store the suspended plasmid at -20°C. The DNA is stable for at least one year from date of shipping when stored at -20°C.

**RefSeq:** [NM\\_001193334.1](#), [NP\\_001180263.1](#)

**RefSeq ORF:** 1353 bp

**Locus ID:** 79971

**UniProt ID:** [Q5T9L3](#)

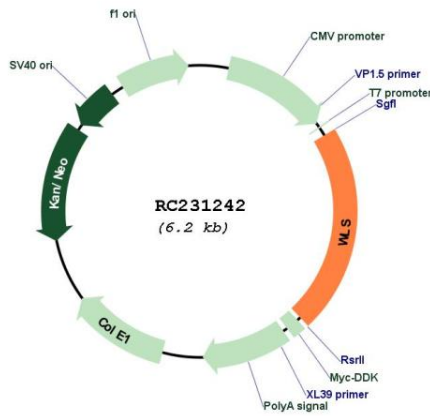
**Cytogenetics:** 1p31.3

**Protein Families:** Transmembrane

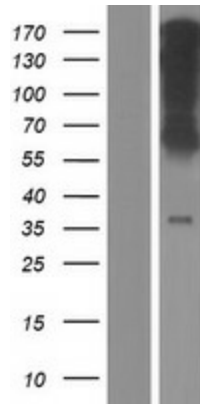
**MW:** 52 kDa

**Gene Summary:** Regulates Wnt proteins sorting and secretion in a feedback regulatory mechanism. This reciprocal interaction plays a key role in the regulation of expression, subcellular location, binding and organelle-specific association of Wnt proteins. Plays also an important role in establishment of the anterior-posterior body axis formation during development (By similarity).[UniProtKB/Swiss-Prot Function]

**Product images:**



Circular map for RC231242



Western blot validation of overexpression lysate (Cat# [LY434241]) using anti-DDK antibody (Cat# [TA50011-100]). Left: Cell lysates from untransfected HEK293T cells; Right: Cell lysates from HEK293T cells transfected with RC231242 using transfection reagent MegaTran 2.0 (Cat# [TT210002]).