

## Product datasheet for **RC231240**

### NFIB (NM\_001190738) Human Tagged ORF Clone

#### Product data:

Product Type:	Expression Plasmids
Product Name:	NFIB (NM_001190738) Human Tagged ORF Clone
Tag:	Myc-DDK
Symbol:	NFIB
Synonyms:	CTF; HMGIC/NFIB; MACID; NF-I/B; NF1-B; NFI-B; NFI-RED; NFIB2; NFIB3
Mammalian Cell Selection:	Neomycin
Vector:	pCMV6-Entry (PS100001)
E. coli Selection:	Kanamycin (25 ug/mL)



[View online »](#)

**ORF Nucleotide Sequence:**

>RC231240 representing NM\_001190738  
 Red=Cloning site Blue=ORF Green=Tags(s)

TTTTGTAATACGACTCACTATAGGGCGGCCGGAATTCGTCGACTGGATCCGGTACCGAGGAGATCTGCC  
 GCC**CGCATCGCC**

ATGAAAAGAATCCAGTGTCTGTGGACTTCTGGTGTCTGCTGTGCAGTTCTGAAATGTAAACCCTGGGA  
 TTCCTAAAAGAATGTCAACTCTGTGCTTTGGATTTCTGATGAATTTACCCATTTCGAGGCACTTCT  
 TCCACATGTCCGTGCAATTGCCTATACTTGGTTCAACCTGCAGGCTCGAAAACGCAAGTACTTTAAAAAG  
 CATGAGAAGCGAATGTCAAAGGATGAAGAAAGAGCAGTCAAAGATGAGCTTCTCAGTGAAAAGCCTGAAA  
 TCAAACAGAAGTGGGCATCCAGGCTCCTTGCCAACTGCGCAAAGATATTCGCCAGGAGTATCGAGAGGA  
 CTTTGTGCTCACCGTACTGGCAAGAAGCACCCGTGCTGTGTCTTATCCAATCCCAGCAGAAGGGTAAG  
 ATTAGGAGAATCGACTGCCTGCGACAGGCAGACAAAGTCTGGCGTCTGGATCTAGTCATGGTGATCCTGT  
 TCAAAGGCATCCCCTTGAAAAGTACCGATGGAGAGCGGCTCATGAAATCCCACATTGCACAAACCAGC  
 ACTTTGTGTCCAGCCACATCATATCACAGTATCAGTTAAGGAGCTTGATTTGTTTTGGCATACTACGTG  
 CAGGAGCAAGATTCTGGACAATCAGGAAGTCCAAGCCACAATGATCCTGCCAAGAATCCTCCAGGTTACC  
 TTGAGGATAGTTTTGAAAATCTGGAGTCTTCAATGTATCAGAATTGTAAAGATATCCAGAACGCCCAT  
 AACCCAGGGAAGTGGAGTCAACTTCCCAATTGGAGAAAATCCCAAGCCAACCATATCATGACATGAAC  
 TCGGGGTCAATCTTCAGAGGTCTGTCTTCTCCACCAAGCAGCAAAAGACCCAAAATATATCCATAG  
 ATGAAAATATGGAACCAAGTCTACAGGAGACTTTTACCCTCTCCAAGTTCACCAGCTGCTGGAAGTGC  
 AACATGGCAGCAAAGAGATCAAGATATGTCTTCTCCGACTACTATGAAGAAGCCTGAAAAGCCATTGTTT  
 AGCTCTGCATCTCCACAGGATCTTCCCAAGACTGAGCACTTCCCCAGCACCACCATCCCGGAATAC  
 CTGGAGTTGCACACAGTGCATCTCAACTCGAAGTCCACTCCACTTCCCGTTGCCATTTCCAACACA  
 AGCTATCTTCTCCAGCCCATCGAGTACTTTTCTCATCCAACAATCAGATATCCTCCCCACCTGAAT  
 CCTCAGGATACTCTGAAGAACTATGTACCTTCTATGACCCATCCAGTCCACAAACCAGCCAGTCTGGT  
 ACCTGGGC

**ACGCGT**ACGCGGCCGCTCGAGCAGAAACTCATCTCAGAAGAGGATCTGGCAGCAAATGATATCCTGGATT  
 ACAAGGATGACGACGATAAGGTTTAA

**Protein Sequence:**

>RC231240 representing NM\_001190738  
 Red=Cloning site Green=Tags(s)

MERIPVSVDFVWVCCAVLKCNP GIPKRMSTLCFGFSDEFHPFIEALLPHVRAIAYTWFNLQARKRKYFKK  
 HEKRMSKDEERAVKDELLSEKPEIKQKASRL LAKLRKDIRQEYREDFVLTVTGKKHPCCVLSNPDQK GK  
 IRRIDCLRQADKVRDLV MVLFKGIPL ESTDGERLMKSPHCTNPALCVQPHHITVSVKELDLFLAYYV  
 QEQDSGQSGSPSHNDPAKNPPGYLEDSFVKSGVFNVSELVRVSRTPITQGTGVNFPIGEIP SQPYHDMN  
 SGVNLQRSLSSPPSSKRPKTISIDENMEPSPTGDFYPSPPSPAAGSRTWHERDQDMSSPTTMMKPEKPLF  
 SSASPQDSSPRLSTFPQHHPGIPGVAHSVISTRTPPPSPLPFPTQAILPPAPSSYFSHTPIRYPHLN  
 PQDTLKNYVPSYDPSSPQTSQSWYLG

**TR**TRPLEQKLISEEDLAANDILDYKDDDDKV

**Chromatograms:**

[https://cdn.origene.com/chromatograms/mk8060\\_e11.zip](https://cdn.origene.com/chromatograms/mk8060_e11.zip)

**Restriction Sites:**

Sgfl-MluI

**Cloning Scheme:**


**ACCN:** NM\_001190738

**ORF Size:** 1338 bp

**OTI Disclaimer:** The molecular sequence of this clone aligns with the gene accession number as a point of reference only. However, individual transcript sequences of the same gene can differ through naturally occurring variations (e.g. polymorphisms), each with its own valid existence. This clone is substantially in agreement with the reference, but a complete review of all prevailing variants is recommended prior to use. [More info](#)

**OTI Annotation:** This clone was engineered to express the complete ORF with an expression tag. Expression varies depending on the nature of the gene.

**Components:** The ORF clone is ion-exchange column purified and shipped in a 2D barcoded Matrix tube containing 10ug of transfection-ready, dried plasmid DNA (reconstitute with 100 ul of water).

**Reconstitution Method:**

1. Centrifuge at 5,000xg for 5min.
2. Carefully open the tube and add 100ul of sterile water to dissolve the DNA.
3. Close the tube and incubate for 10 minutes at room temperature.
4. Briefly vortex the tube and then do a quick spin (less than 5000xg) to concentrate the liquid at the bottom.
5. Store the suspended plasmid at -20°C. The DNA is stable for at least one year from date of shipping when stored at -20°C.

**Note:** Plasmids are not sterile. For experiments where strict sterility is required, filtration with 0.22um filter is required.

**RefSeq:** [NM\\_001190738.1](#), [NP\\_001177667.1](#)

**RefSeq ORF:** 1341 bp

**Locus ID:** 4781

**UniProt ID:** [O00712](#)

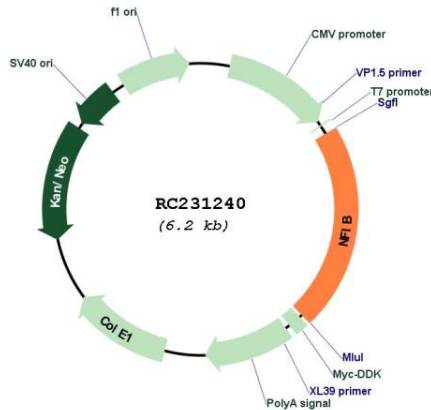
**Cytogenetics:** 9p23-p22.3

**Protein Families:** Druggable Genome, Transcription Factors

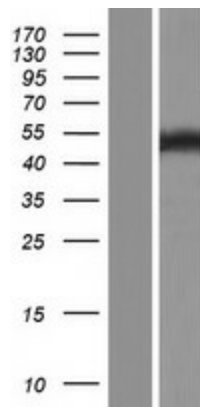
**MW:** 50.7 kDa

**Gene Summary:** Recognizes and binds the palindromic sequence 5'-TTGGCNNNNNGCCAA-3' present in viral and cellular promoters and in the origin of replication of adenovirus type 2. These proteins are individually capable of activating transcription and replication.[UniProtKB/Swiss-Prot Function]

**Product images:**



Circular map for RC231240



Western blot validation of overexpression lysate (Cat# [LY434239]) using anti-DDK antibody (Cat# [TA50011-100]). Left: Cell lysates from untransfected HEK293T cells; Right: Cell lysates from HEK293T cells transfected with RC231240 using transfection reagent MegaTran 2.0 (Cat# [TT210002]).