

Product datasheet for **RC231229L2V**

DCAMKL1 (DCLK1) (NM_001195416) Human Tagged ORF Clone Lentiviral Particle

Product data:

Product Type:	Lentiviral Particles
Product Name:	DCAMKL1 (DCLK1) (NM_001195416) Human Tagged ORF Clone Lentiviral Particle
Symbol:	DCAMKL1
Synonyms:	CL1; CLICK1; DCAMKL1; DCDC3A; DCLK
Mammalian Cell Selection:	None
Vector:	pLenti-C-mGFP (PS100071)
Tag:	mGFP
ACCN:	NM_001195416
ORF Size:	1299 bp
ORF Nucleotide Sequence:	The ORF insert of this clone is exactly the same as(RC231229).
OTI Disclaimer:	<p>Due to the inherent nature of this plasmid, standard methods to replicate additional amounts of DNA in E. coli are highly likely to result in mutations and/or rearrangements. Therefore, OriGene does not guarantee the capability to replicate this plasmid DNA. Additional amounts of DNA can be purchased from OriGene with batch-specific, full-sequence verification at a reduced cost. Please contact our customer care team at custsupport@origene.com or by calling 301.340.3188 option 3 for pricing and delivery.</p> <p>The molecular sequence of this clone aligns with the gene accession number as a point of reference only. However, individual transcript sequences of the same gene can differ through naturally occurring variations (e.g. polymorphisms), each with its own valid existence. This clone is substantially in agreement with the reference, but a complete review of all prevailing variants is recommended prior to use. More info</p>
OTI Annotation:	This clone was engineered to express the complete ORF with an expression tag. Expression varies depending on the nature of the gene.
RefSeq:	NM_001195416.1
RefSeq ORF:	1302 bp
Locus ID:	9201



[View online »](#)

UniProt ID: [O15075](#)

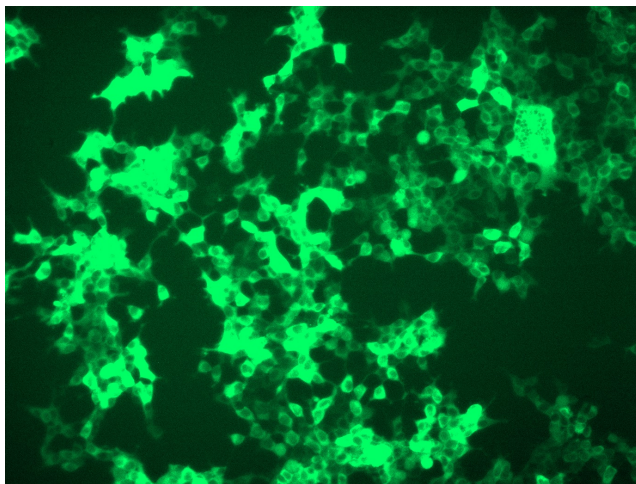
Cytogenetics: 13q13.3

Protein Families: Druggable Genome, Protein Kinase

MW: 48.1 kDa

Gene Summary: This gene encodes a member of the protein kinase superfamily and the doublecortin family. The protein encoded by this gene contains two N-terminal doublecortin domains, which bind microtubules and regulate microtubule polymerization, a C-terminal serine/threonine protein kinase domain, which shows substantial homology to Ca²⁺/calmodulin-dependent protein kinase, and a serine/proline-rich domain in between the doublecortin and the protein kinase domains, which mediates multiple protein-protein interactions. The microtubule-polymerizing activity of the encoded protein is independent of its protein kinase activity. The encoded protein is involved in several different cellular processes, including neuronal migration, retrograde transport, neuronal apoptosis and neurogenesis. This gene is up-regulated by brain-derived neurotrophic factor and associated with memory and general cognitive abilities. Multiple transcript variants generated by two alternative promoter usage and alternative splicing have been reported, but the full-length nature and biological validity of some variants have not been defined. These variants encode different isoforms, which are differentially expressed and have different kinase activities.[provided by RefSeq, Sep 2010]

Product images:



[RC231229L2] was used to prepare Lentiviral particles using [TR30037] packaging kit. HEK293T cells were transduced with RC231229L2V particle to overexpress human DCLK1-mGFP fusion protein.