

Product datasheet for **RC231225**

Fukutin (FKTN) (NM_001198963) Human Tagged ORF Clone

Product data:

Product Type:	Expression Plasmids
Product Name:	Fukutin (FKTN) (NM_001198963) Human Tagged ORF Clone
Tag:	Myc-DDK
Symbol:	Fukutin
Synonyms:	CMD1X; FCMD; LGMD2M; LGMDR13; MDDGA4; MDDGB4; MDDGC4
Mammalian Cell Selection:	Neomycin
Vector:	pCMV6-Entry (PS100001)
E. coli Selection:	Kanamycin (25 ug/mL)



[View online »](#)

ORF Nucleotide Sequence:

>RC231225 representing NM_001198963
 Red=Cloning site Blue=ORF Green=Tags(s)

TTTTGTAATACGACTCACTATAGGGCGGCCGGAATTCGTCGACTGGATCCGGTACCGAGGAGATCTGCC
 GCC**CGGATCGCC**

ATGAGTAGAATCAATAAGAACGTGGTTTTGGCCCTTTAACGCTGACAAGTTCTGCATTTCTGCTGTTTC
 AGTTGTACTACTACAAGCACTATTTATCAACAAAGAATGGAGCTGGTTTGTCAAATCCAAGGAAGCCG
 AATTGGATTTGATAGCACACAGTGGCGTGCAGTTAAAAAATTTATTATGTTAACATCCAACCAAAATGTA
 CCAGTGTTCCTTATTGATCCTTTGATACTGGAATTGATTAATAAGAACTTTGAACAAGTCAAAAATACTT
 CTCATGGCTCTACTTCACAATGCAAGTTTTCTGTGTTCCAAGAGACTTTACTGCATTTGCACTGCAGTA
 TCACCTATGGAAGAATGAGGAAGGCTGGTTTCGGATAGCTGAGAATATGGGATTTCAAGTGCCTAAAGATT
 GAGAGTAAAGATCCCGGCTAGACGGGATAGACTCACTCTCTGGAAGTAAATCCCGCTGCACTATATCT
 GCAAATGGCCACTCATGCGATCCACTTGGTAGTCTTTCATGAGAGGAGTGGCAACTACCTCTGGCACGG
 CCACTTGAGACTTAAAGAACACATTGACAGGAAATTTGTTCCCTCCGAAAGTTACAGTTTGGTCGTTAT
 CCAGGAGCTTTTGACAGGCCAGAGTTACAGCAAGTTACTGTTGATGGACTGGAAGTTCTCATTCCAAGG
 ATCCAATGCATTTGTAGAAGAAGTACCACACTCTAGGTTTATTGAGTGTAGGTATAAAGAAGCTCGAGC
 ATCTTTTCAGCAGTACCTTGATGATAACACTGTGGAAGCTGTGGCCTTTCCGGAAGAGTCAAAGGAATTA
 CTGCAACTAGCAGCGAAAACATTAACAAAATTTGGGAGTACCATTCTGGCTGAGCAGTGGAACTTGCTAG
 GATGGTATCGACAATGCAACATTATTCCTTATAGCAAAGATGTTGACCTAGGAATTTTTATACAAGATTA
 CAAATCTGATATTATTTAGCATTTTCAGGATGCAGGACTCCGCTCAAACACAAAATTTGGGAAGGTAGAA
 GACAGCTTGGAACTATCCTTCCAGGGAAAAGATGATGTAAGAACTGATGTTTTTTCTTCTATGAAGAAA
 CTGATCACATGTGGAATGGAGGCACTCAGGCCAAAACAGGAAAAAATTCAAATACCTGTTTCCGAAGTT
 TACACTGTGCTGGACTGAGTTTGTAGACATGAAGGTCCATGTACCCTGTGAAACCCTCGAATACATTGAA
 GCCAACTATGGCAAGAATCAGCAGGGTGCA

ACGCGTACGCGGCCGCTCGAGCAGAACTCATCTCAGAAGAGGATCTGGCAGCAAATGATATCCTGGATT
 ACAAGGATGACGACGATAAGGTTTAA

Protein Sequence:

>RC231225 representing NM_001198963
 Red=Cloning site Green=Tags(s)

MSRINKNVVLLALLTLTSSAFLLFQLYYYKHYLSTKNGAGLSKSKGSRIGFDSTQWRVKKFIMLTSNQNV
 PVFLIDPLILEL INKNFEQVKNTSHGSTSQCKFFCVPRDFTAFALQYHLWKNEEGWFRIAENMGFQCLKI
 ESKDPRLDGIDSLSGTEIPLHYICKLATHAIHLVVFHERSGNYLWHGHLRLKEHIDRKFVPRKLFQGRY
 PGAFDRPELQQVTVDGLEVLIPKDPMHFVEEVPHSRFIECRYKEARAFFQQYLDNTVEAVAFRKSAREL
 LQLAAKTLNKLGVFWLSSGTCLGWYRQCNIIPYSKDVDLGIIFIQDYKSDIILAFQDAGLPLKHKFGKVE
 DSLELSFQKDDVKLDVFFVYEEDHMMWGGTQAKTGKFKYLFPKFTLCWTEFVDMKVHVPCELEYIE
 ANYGKNQQGA

TRTRPLEQKLISEEDLAANDILDYKDDDDKV

Chromatograms:

https://cdn.origene.com/chromatograms/mk8059_d01.zip

Restriction Sites:

SgfI-MluI

Cloning Scheme:


ACCN: NM_001198963

ORF Size: 1290 bp

OTI Disclaimer: The molecular sequence of this clone aligns with the gene accession number as a point of reference only. However, individual transcript sequences of the same gene can differ through naturally occurring variations (e.g. polymorphisms), each with its own valid existence. This clone is substantially in agreement with the reference, but a complete review of all prevailing variants is recommended prior to use. [More info](#)

OTI Annotation: This clone was engineered to express the complete ORF with an expression tag. Expression varies depending on the nature of the gene.

Components: The ORF clone is ion-exchange column purified and shipped in a 2D barcoded Matrix tube containing 10ug of transfection-ready, dried plasmid DNA (reconstitute with 100 ul of water).

Reconstitution Method:

1. Centrifuge at 5,000xg for 5min.
2. Carefully open the tube and add 100ul of sterile water to dissolve the DNA.
3. Close the tube and incubate for 10 minutes at room temperature.
4. Briefly vortex the tube and then do a quick spin (less than 5000xg) to concentrate the liquid at the bottom.
5. Store the suspended plasmid at -20°C. The DNA is stable for at least one year from date of shipping when stored at -20°C.

RefSeq: [NM_001198963.2](#)

RefSeq ORF: 1293 bp

Locus ID: 2218

UniProt ID: [O75072](#)

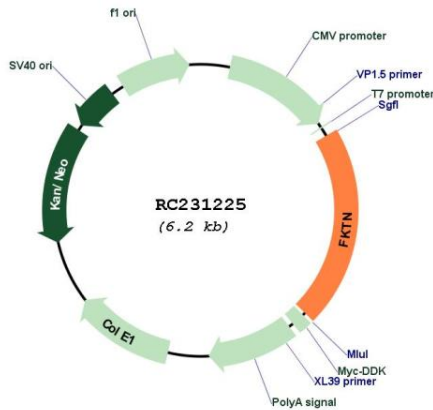
Cytogenetics: 9q31.2

Protein Families: Transmembrane

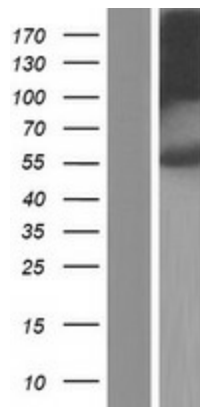
MW: 50.3 kDa

Gene Summary: The protein encoded by this gene is a putative transmembrane protein that is localized to the cis-Golgi compartment, where it may be involved in the glycosylation of alpha-dystroglycan in skeletal muscle. The encoded protein is thought to be a glycosyltransferase and could play a role in brain development. Defects in this gene are a cause of Fukuyama-type congenital muscular dystrophy (FCMD), Walker-Warburg syndrome (WWS), limb-girdle muscular dystrophy type 2M (LGMD2M), and dilated cardiomyopathy type 1X (CMD1X). Alternatively spliced transcript variants have been found for this gene. [provided by RefSeq, Nov 2010]

Product images:



Circular map for RC231225



Western blot validation of overexpression lysate (Cat# [LY434224]) using anti-DDK antibody (Cat# [TA50011-100]). Left: Cell lysates from untransfected HEK293T cells; Right: Cell lysates from HEK293T cells transfected with RC231225 using transfection reagent MegaTran 2.0 (Cat# [TT210002]).