

Product datasheet for **RC231224**

SMAP2 (NM_001198979) Human Tagged ORF Clone

Product data:

Product Type:	Expression Plasmids
Product Name:	SMAP2 (NM_001198979) Human Tagged ORF Clone
Tag:	Myc-DDK
Symbol:	SMAP2
Synonyms:	SMAP1L
Mammalian Cell Selection:	Neomycin
Vector:	pCMV6-Entry (PS100001)
E. coli Selection:	Kanamycin (25 ug/mL)



[View online »](#)

ORF Nucleotide Sequence:

>RC231224 representing NM_001198979
 Red=Cloning site Blue=ORF Green=Tags(s)

TTTTGTAATACGACTCACTATAGGGCGGCCGGAATTCGTCGACTGGATCCGGTACCGAGGAGATCTGCC
 GCC**CGCATCGCC**

ATGGGAAAGTGGGCAGAGCAAGATTTGCACAAAAAGATGTTTTGCAAATAGAGGAAATAGGCCCTGTAA
 AGCTATTTGTGAGAGACTGGCCGCGATGGCCTCTTGAACATTGGTGTGTTTCATCTGCATTTCGATGTGC
 TGGAAATCCACAGGAATCTGGGGGTGCACATATCCAGGGTAAAGTCAGTTAACCTCGACCAGTGGACTCAA
 GAACAGATTCAAGTGCATGCAAGAGATGGGAAATGGAAAGGCAAACCGACTTTATGAAGCCTATCTTCCTG
 AGACCTTTTCGGCGACCTCAGATAGACCCAGCTGTTGAAGGATTTATTCGAGACAAATATGAGAAGAAGAA
 ATACATGGACCGAAGTCTGGACATCAATGCCTTTAGGAAAGAAAAAGATGACAAGTGGAAAAAGGGGAGC
 GAACAGTTCAGAAAAAAATGGAACCTGTTGTTTTGAGAAGGTGAAAATGCCACAGAAAAAAGAAG
 ACCCACAGCTACCTCGAAAAAGCTCCCCGAAATCCACAGCGCCTGTCATGGATTTGTTGGCCTTGATGC
 TCCTGTGGCCTGCTCCATTGCAAATAGTAAGACCAGCAATACCCTAGAGAAGGATTTAGACTCTGTTGGCC
 TCTGTTCCATCCCTTCTTCTTCGGTTCCAGAAAGGTTGTAGGTTCCATGCCAACTGCAGGGAGTGCCG
 GCTCTGTTCTGAAAATCTGAACCTGTTTCCGGAGCCAGGGAGCAATCAGAAGAAATAGGCAAGAAACA
 GCTCTCTAAAGACTCCATTCTTTCACTGTATGGATCCCAGACGCCTCAAATGCCTACTCAAGCAATGTTT
 ATGGCTCCCGCTCAGATGGCATAATCCCACAGCCTACCCAGCTTCCCCGGGGTTACACCTCCTAACAGCA
 TAATGGGGAGCATGATGCCTCCACCAAGTGGCATGGTTGCTCAGCCAGGAGCTTCTGGGATGGTTGCCCC
 CATGGCCATGCCTGCAGGCTATATGGGTGGCATGCAGGCATCAATGATGGGTGTGCCGAATGGAATGATG
 ACCACCCAGCAGGCTGGCTACATGGCAGGCATGGCAGCTATGCCCCAGACTGTGTATGGGTCCAGCCAG
 CTCAGCAGCTGCAATGGAACCTTACTCAGATGACCCAGCAGATGGCTGGGATGAACTTCTATGGAGCCAA
 TGGCATGATGAACTATGGACAGTCAATGAGTGGCGGAAATGGACAGGCAGCAATCAGACTCTCAGTCTC
 CAGATGTGGAAA

ACGCGTACGCGGCCGCTCGAGCAGAAACTCATCTCAGAAGAGGATCTGGCAGCAATGATATCCTGGATT
 ACAAGGATGACGACGATAAGGTTTAA

Protein Sequence:

>RC231224 representing NM_001198979
 Red=Cloning site Green=Tags(s)

MGKVGRARFAQKDVLIQIEEIGPVKLFVRDWRWASWNIGVFICIRCAGIHRNLGVHISRVKSVNLDQWTQ
 EQIQCMQEMGNKANRLYEAYLPETFRRPQIDPAVEGFIRDKEYKKKYMDRSLDINAFRKEKDDKWKRG
 EPVPEKKLEPVVFEKVKMPQKEDPQLPRKSSPKSTAPVMDLLGLDAPVACSIANSKTSNTLEKDLDLA
 SVPSPSSSGSRKVVGSMPTAGSAGSVPENLNLFPPEPGSKSEEIGKKQLSKDSILSLYGSQTPQMPTQAMF
 MAPAQMAYPTAYPSFPGVTPPNSIMGSMPPPVGMVAQPGASGMVAPMAMPAGYMGGMQASMMGVPNGMM
 TTQQAGYMAGMAAMPQTVYGVQPAQQLQWNLQMTQMQMAGMNFYGANGMMNYGQSMSSGGNGQAANQTLSP
 QMWK

TRTRPLEQKLISEEDLAANDILDYKDDDDKV

Chromatograms:

https://cdn.origene.com/chromatograms/mk8058_h06.zip

Restriction Sites:

Sgfl-Mlul

Cloning Scheme:


ACCN: NM_001198979

ORF Size: 1272 bp

OTI Disclaimer: The molecular sequence of this clone aligns with the gene accession number as a point of reference only. However, individual transcript sequences of the same gene can differ through naturally occurring variations (e.g. polymorphisms), each with its own valid existence. This clone is substantially in agreement with the reference, but a complete review of all prevailing variants is recommended prior to use. [More info](#)

OTI Annotation: This clone was engineered to express the complete ORF with an expression tag. Expression varies depending on the nature of the gene.

Components: The ORF clone is ion-exchange column purified and shipped in a 2D barcoded Matrix tube containing 10ug of transfection-ready, dried plasmid DNA (reconstitute with 100 ul of water).

Reconstitution Method:

1. Centrifuge at 5,000xg for 5min.
2. Carefully open the tube and add 100ul of sterile water to dissolve the DNA.
3. Close the tube and incubate for 10 minutes at room temperature.
4. Briefly vortex the tube and then do a quick spin (less than 5000xg) to concentrate the liquid at the bottom.
5. Store the suspended plasmid at -20°C. The DNA is stable for at least one year from date of shipping when stored at -20°C.

RefSeq: [NM_001198979.1](#), [NP_001185908.1](#)

RefSeq ORF: 1275 bp

Locus ID: 64744

UniProt ID: [Q8WU79](#)

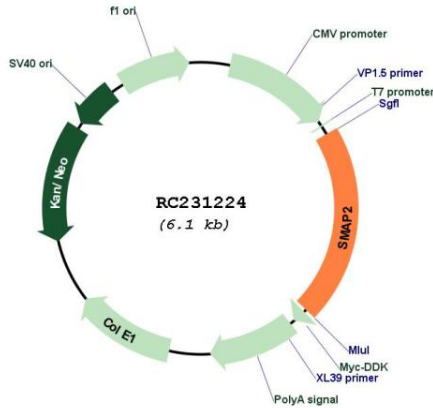
Cytogenetics: 1p34.2

Protein Pathways: Endocytosis

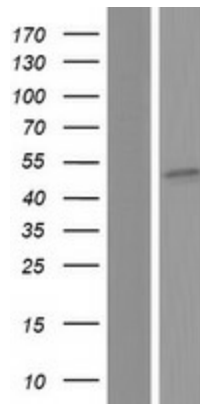
MW: 46.8 kDa

Gene Summary: GTPase activating protein that acts on ARF1. Can also activate ARF6 (in vitro). May play a role in clathrin-dependent retrograde transport from early endosomes to the trans-Golgi network (By similarity).[UniProtKB/Swiss-Prot Function]

Product images:



Circular map for RC231224



Western blot validation of overexpression lysate (Cat# [LY434223]) using anti-DDK antibody (Cat# [TA50011-100]). Left: Cell lysates from untransfected HEK293T cells; Right: Cell lysates from HEK293T cells transfected with RC231224 using transfection reagent MegaTran 2.0 (Cat# [TT210002]).