

Product datasheet for RC231221

MEF2C (NM_001193348) Human Tagged ORF Clone

Product data:

Product Type:	Expression Plasmids
Product Name:	MEF2C (NM_001193348) Human Tagged ORF Clone
Tag:	Myc-DDK
Symbol:	MEF2C
Synonyms:	C5DELq14.3; DEL5q14.3
Mammalian Cell Selection:	Neomycin
Vector:	pCMV6-Entry (PS100001)
E. coli Selection:	Kanamycin (25 ug/mL)
ORF Nucleotide Sequence:	>RC231221 representing NM_001193348 Red=Cloning site Blue=ORF Green=Tags(s)

TTTTGTAATACGACTCACTATAGGGCGGCCGGAATTCGTCGACTGGATCCGGTACCGAGGAGATCTGCC
GCC**CGATCGCC**

ATGGGGAGAAAAAGATTACAGTTACGAGGATTATGGATGAACGTAACAGACAGGTGACATTTACAAAGA
GGAAATTTGGGTTGATGAAGAAGGCTTATGAGCTGAGCGTGCTGTGTGACTGTGAGATTGCGCTGATCAT
CTTCAACAGCACCAACAAGCTGTTCCAGTATGCCAGCACCGACATGGACAAAGTGCTTCTCAAGTACAG
GAGTACAACGAGCCGCATGAGAGCCGGACAACTCAGACATCGTGGAGGCTGTTCCACCTCCCAACTTCG
AGATGCCAGTCTCCATCCAGTGTCCAGCCACAACAGTTTGGTGTACAGCAACCCTGTCAGTCACTGGG
AAACCCCAACCTATTGCCACTGGCTCACCTTCTCTGCAGAGGAATAGTATGTCTCTGGTGAACACAT
CGACCTCCAAGTGCAGGTAACACAGGTGGTCTGATGGGTGGAGACCTCACGTCTGGTGCAGGCACCAAGT
CAGGGAACGGGTATGGCAATCCCGAAACTCACCAGGTCTGCTGGTCTCACCTGGTAACTTGAACAAGAA
TATGCAAGCAAAATCTCCTCCCCAATGAATTTAGGAATGAATAACCGTAAACCAGATCTCCGAGTTCTT
ATTCCACCAGGCAGCAAGAATACGATGCCATCAGTGAATCAAAGGATAAATAACTCCCAGTCGGCTCAGT
CATTGGCTACCCAGTGGTTCCGTAGCAACTCTACTTTACCAGGACAAGGAATGGGAGGATATCCATC
AGCCATTTCAACAACATATGGTACCGAGTACTCTCTGAGTAGTGCAGACCTGTATCTCTGTCTGGGTTT
AACACCCGACGCGCTCTCACCTTGGTTCAGTAACTGGCTGGCAACAGCAACACCTACATAACATGCCAC
CATCTGCCCTCAGTCAGTTGGGAGCTTGCAGTCACTCACTTATCTCAGAGTTCAAATCTCTCCCTGCC
TTCTACTCAAAGCCTCAACATCAAGTCAGAACCTGTTTCTCCTCCTAGAGACCGTACCACCACCCCTTCG
AGATACCACAACACACGCGCCACGAGGCGGGGAGATCTCCTGTTGACAGCTTGAGCAGCTGTAGCAGTT
CGTACGACGGGAGCGACCGAGAGGATCACCGGAACGAATCCACTCCCCATTGGACTCACCAGACCTTC
GCCGGACGAAAGGGAAAGTCCCTCAGTCAAGCGCATGCGACTTTCTGAAGGATGGGCAACA

ACGCGTACGCGGCCGCTCGAGCAGAAACTCATCTCAGAAGAGGATCTGGCAGCAAATGATATCCTGGATT
ACAAGGATGACGACGATAAGGTTTAA



[View online »](#)

Protein Sequence: >RC231221 representing NM_001193348
Red=Cloning site Green=Tags(s)

MGRKKIQITRIMDERNRQVTFTRKRFGLMKKAYELSVLCDCEIALIIFNSTNKL FQYASTDMDKVLLKYT
 EYNPHESTRNSDIVEAVPPPNFEMPVSI PVSSHNSLVYSNPVSSLGNPNLLPLAHPSLQRNSMSPGVTH
 RPPSAGNTGGLMGGDLTSGAGTSAGNGYGNRNSPGLLVSPGNLNKNMQAKSPPPMNLGMNNRKPDLRVL
 IPPGSKNTMPSVNQRINNSQSAQSLATPVVSVATPTLPGQGMGGYPSAISTTYGTEYSLSSADLSSLSGF
 NTASALHLGSVTGWQQHLHNMPPSALSQLGACTSTHLSQSSNLSLPSTQSLNIKSEPVSPDRRTTTPS
 RYPQHTRHEAGRSPVDSLSSCSSSYDGSREDHRNEFHSPIGLTRPSPDERESPVKRMRLSEGWAT

TRTRPLEQKLISEEDLAANDILDYKDDDDKV

Chromatograms: https://cdn.origene.com/chromatograms/mk8058_d05.zip

Restriction Sites: SgfI-MluI

Cloning Scheme:



ACCN: NM_001193348

ORF Size: 1251 bp

OTI Disclaimer: The molecular sequence of this clone aligns with the gene accession number as a point of reference only. However, individual transcript sequences of the same gene can differ through naturally occurring variations (e.g. polymorphisms), each with its own valid existence. This clone is substantially in agreement with the reference, but a complete review of all prevailing variants is recommended prior to use. [More info](#)

OTI Annotation: This clone was engineered to express the complete ORF with an expression tag. Expression varies depending on the nature of the gene.

Components: The ORF clone is ion-exchange column purified and shipped in a 2D barcoded Matrix tube containing 10ug of transfection-ready, dried plasmid DNA (reconstitute with 100 ul of water).

Reconstitution Method:

1. Centrifuge at 5,000xg for 5min.
2. Carefully open the tube and add 100ul of sterile water to dissolve the DNA.
3. Close the tube and incubate for 10 minutes at room temperature.
4. Briefly vortex the tube and then do a quick spin (less than 5000xg) to concentrate the liquid at the bottom.
5. Store the suspended plasmid at -20°C. The DNA is stable for at least one year from date of shipping when stored at -20°C.

RefSeq: [NM_001193348.1](#), [NP_001180277.1](#)

RefSeq ORF: 1254 bp

Locus ID: 4208

UniProt ID: [Q06413](#)

Cytogenetics: 5q14.3

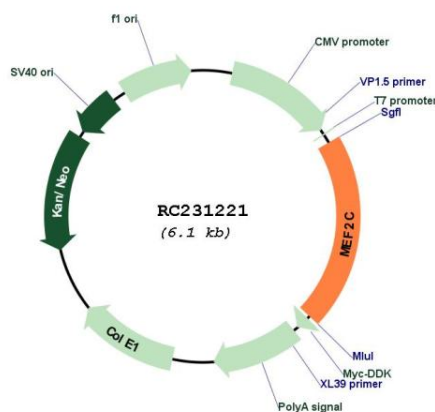
Protein Families: Transcription Factors

Protein Pathways: MAPK signaling pathway

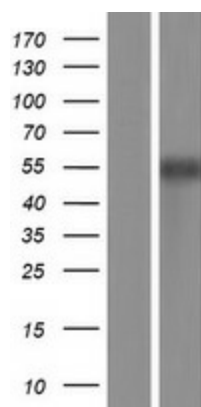
MW: 45.4 kDa

Gene Summary: This locus encodes a member of the MADS box transcription enhancer factor 2 (MEF2) family of proteins, which play a role in myogenesis. The encoded protein, MEF2 polypeptide C, has both trans-activating and DNA binding activities. This protein may play a role in maintaining the differentiated state of muscle cells. Mutations and deletions at this locus have been associated with severe cognitive disability, stereotypic movements, epilepsy, and cerebral malformation. Alternatively spliced transcript variants have been described. [provided by RefSeq, Jul 2010]

Product images:



Circular map for RC231221



Western blot validation of overexpression lysate (Cat# [LY434220]) using anti-DDK antibody (Cat# [TA50011-100]). Left: Cell lysates from untransfected HEK293T cells; Right: Cell lysates from HEK293T cells transfected with RC231221 using transfection reagent MegaTran 2.0 (Cat# [TT210002]).