

## Product datasheet for RC231215

### TCF7L2 (NM\_001198530) Human Tagged ORF Clone

#### Product data:

Product Type:	Expression Plasmids
Product Name:	TCF7L2 (NM_001198530) Human Tagged ORF Clone
Tag:	Myc-DDK
Symbol:	TCF7L2
Synonyms:	TCF-4; TCF4
Mammalian Cell Selection:	Neomycin
Vector:	pCMV6-Entry (PS100001)
E. coli Selection:	Kanamycin (25 ug/mL)
ORF Nucleotide Sequence:	>RC231215 representing NM_001198530 Red=Cloning site Blue=ORF Green=Tags(s)

TTTTGTAATACGACTCACTATAGGGCGGCCGGAATTCGTCGACTGGATCCGGTACCGAGGAGATCTGCC  
GCC**CGATCGCC**

ATGCCGCAGCTGAACGGCGGTGGAGGGGATGACCTAGGCGCCAACGACGAACTGATTTCTTCAAAGACG  
AGGGCGAACAGGAGGAGAAGAGCTCCGAAAACCTCGGCAGAGAGGGATTTAGCTGATGTCAAATCGTC  
TCTAGTCAATGAATCAGAAACGAATCAAACAGCTCCTCCGATTCGAGGCGGAAAGACGGCCTCCGCT  
CGCTCCGAAAGTTTCCGAGACAAATCCCGGAAAGTTTGAAGAAGCGGCCAAGAGGCAAGATGGAGGGC  
TCTTTAAGGGGCCACCGTATCCCGGCTACCCCTTCATCATGATCCCCGACCTGACGAGCCCTACCTCCC  
CAACGGATCGCTCTCGCCACCGCCGAACCTCTAACAAAGTGCCAGTGGTGCAGCACCTCACCATGTC  
CACCCCTCACGCCTTATCACGTACAGCAATGAACACTTCACGCCGGAAACCCACTCCACACTTAC  
CAGCCGACGTAGACCCCAAAACAGGAATCCCACGGCCTCCGCACCTCCAGATATATCCCGTATTACCC  
ACTATCGCTGGCACCGTAGGACAAATCCCCATCCGCTAGGATGGTTAGTACCACAGCAAGGTCAACCA  
GTGTACCAATCACGACAGGAGGATTGACACCCCTACCCACAGCTCTGACCGTCAATGCTTCCATGT  
CCAGGTTCCCTCCCATATGGTCCCACCACATCATACGCTACACACGACGGGCATTCGCATCCGGCCAT  
AGTCACACCAACAGTCAAACAGGAATCGTCCCAGAGTGTGTCGGCTCACTCCATAGTTCAAAGCATCAG  
GACTCCAAAAGGAAGAAGAAAAGAAAGCCACATAAAGAACTCTTAATGCATTCATGTTGTATA  
TGAAGGAAATGAGAGCAAAGGTCGTAGCTGAGTGACGTTGAAAGAAAGCGCGCCATCAACCAGATCCT  
TGGGCGGAGGTGGCATGCACTGTCCAGAGAAGAGCAAGCGAAATACTACGAGCTGGCCCGAAGGAGCGA  
CAGCTTATATGCAACTGTACCCCGCTGGTCCGCGGGGATAACTATGGAAAGAAGAAGAGGAAAA  
GGGACAAGCAGCCGGGAGAGACCAATGGAGAAAAAAAAGTGCCTTCGCTACATAAAGGTGAAGGCAGC  
TGCCTCAGCCACCCTTTCAGATGGAAGCTTAC

**ACGGT**ACGGCGCGCTCGAGCAGAACTCATCTCAGAAGAGGATCTGGCAGCAAATGATATCCTGGATT  
ACAAGGATGACGACGATAAGGTTTAA



[View online >](#)

**Protein Sequence:** >RC231215 representing NM\_001198530  
Red=Cloning site Green=Tags(s)

MPQLNGGGDDL GANDELISFKDEGEQEEKSENSSAERDLADV KSSLVNESETNQNSSDSEAERRPPP  
 RSESF RDKSRESLEEA AKRQD GGLFKGPPYPGYPFIMIPDLTSPYLPNGSL SPTARTSNKV PVVQHPHHV  
 HPLTPLITYSNEHFTPGNPPPHLPADVDPKTGIPRPPHPDI SPYYPLSPGTVGQIPHLGWLVPQQGQP  
 VYPIITGGFRHPYPTALTVNASMSRFP PHMVP PHHTLHTTGIPHPAIVTPTVKQESSQSDVGLHSSKHQ  
 DSKKEEEKKPKPHIKPLNAFMLYMKEMRAKVVAECTLKE SAAINQILGRRWHALSREEQAKYYELARKER  
 QLHMQLYPGWSARDNYGKKKKRKRDKQPGETNGEKKSAFATYKVKAASAHPLQMEAY

TRTRPLEQKLISEEDLAANDILDYKDDDDKV

**Chromatograms:** [https://cdn.origene.com/chromatograms/mk8057\\_h03.zip](https://cdn.origene.com/chromatograms/mk8057_h03.zip)

**Restriction Sites:** SgfI-MluI

**Cloning Scheme:**



**ACCN:** NM\_001198530

**ORF Size:** 1224 bp

**OTI Disclaimer:** The molecular sequence of this clone aligns with the gene accession number as a point of reference only. However, individual transcript sequences of the same gene can differ through naturally occurring variations (e.g. polymorphisms), each with its own valid existence. This clone is substantially in agreement with the reference, but a complete review of all prevailing variants is recommended prior to use. [More info](#)

**OTI Annotation:** This clone was engineered to express the complete ORF with an expression tag. Expression varies depending on the nature of the gene.

**Components:** The ORF clone is ion-exchange column purified and shipped in a 2D barcoded Matrix tube containing 10ug of transfection-ready, dried plasmid DNA (reconstitute with 100 ul of water).

**Reconstitution Method:**

1. Centrifuge at 5,000xg for 5min.
2. Carefully open the tube and add 100ul of sterile water to dissolve the DNA.
3. Close the tube and incubate for 10 minutes at room temperature.
4. Briefly vortex the tube and then do a quick spin (less than 5000xg) to concentrate the liquid at the bottom.
5. Store the suspended plasmid at -20°C. The DNA is stable for at least one year from date of shipping when stored at -20°C.

**RefSeq:** [NM\\_001198530.1](#), [NP\\_001185459.1](#)

**RefSeq ORF:** 1227 bp

**Locus ID:** 6934

**Cytogenetics:** 10q25.2-q25.3

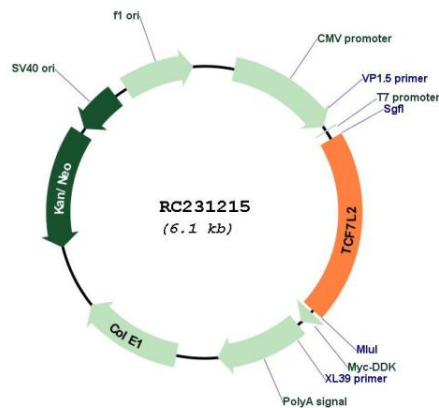
**Protein Families:** Druggable Genome, Transcription Factors

**Protein Pathways:** Acute myeloid leukemia, Adherens junction, Arrhythmogenic right ventricular cardiomyopathy (ARVC), Basal cell carcinoma, Colorectal cancer, Endometrial cancer, Melanogenesis, Pathways in cancer, Prostate cancer, Thyroid cancer, Wnt signaling pathway

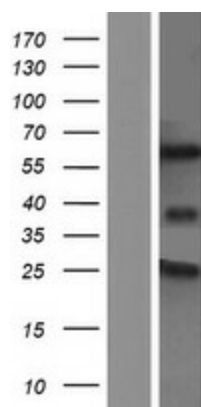
**MW:** 45.8 kDa

**Gene Summary:** This gene encodes a high mobility group (HMG) box-containing transcription factor that plays a key role in the Wnt signaling pathway. The protein has been implicated in blood glucose homeostasis. Genetic variants of this gene are associated with increased risk of type 2 diabetes. Several transcript variants encoding multiple different isoforms have been found for this gene.[provided by RefSeq, Oct 2010]

## Product images:



Circular map for RC231215



Western blot validation of overexpression lysate (Cat# [LY434214]) using anti-DDK antibody (Cat# [TA50011-100]). Left: Cell lysates from untransfected HEK293T cells; Right: Cell lysates from HEK293T cells transfected with RC231215 using transfection reagent MegaTran 2.0 (Cat# [TT210002]).