

Product datasheet for RC231210

ASCC1 (NM_001198799) Human Tagged ORF Clone

Product data:

Product Type:	Expression Plasmids
Product Name:	ASCC1 (NM_001198799) Human Tagged ORF Clone
Tag:	Myc-DDK
Symbol:	ASCC1
Synonyms:	ASC1p50; CGI-18; p50; SMABF2
Mammalian Cell Selection:	Neomycin
Vector:	pCMV6-Entry (PS100001)
E. coli Selection:	Kanamycin (25 ug/mL)
ORF Nucleotide Sequence:	>RC231210 representing NM_001198799 Red=Cloning site Blue=ORF Green=Tags(s)

TTTTGTAATACGACTCACTATAGGGCGGCCGGAATTCGTCGACTGGATCCGGTACCGAGGAGATCTGCC
GCC**CGATCGCC**

ATGGAAGTTCTGCGTCCACAGCTTATAAGAATTGATGGCCGGAATTACAGGAAGAATCCAGTCCAAGAAC
AGACCTATCAACATGAAGAAGATGAAGAGGACTTCTATCAAGGCTCCATGGAGTGTGCTGATGAGCCCTG
TGATGCCTACGAGGTGGAGCAGACCCACAAGGATTCGGTCTACTTTGAGGGCCCCAGCTTGCTCTAT
AATCTCATTCACTTGAACACATCAAACGACTGTGGTTCAGAAGATAACTTTGGATTGTCAGAATATTT
ATACTTGAAGTCCAGGCATATAGTTGGAAAGAGAGGGGACACTAGGAAGAAAATAGAAATGGAGACCAA
AACTTCTATTAGCATTCTAAACCTGGACAAGACGGGAAATTGTAACTACTGGCCAGCATCGAAATGGT
GTAATTTTCAGCCGAAACCGGATTGATGTTCTTTTGGACACTTTTCGAAGAAAGCAGCCCTTCACTCACT
TCCTTGCCTTTTTCTCAATGAAGTTGAGGTTCCAGGAAGGATTCCTGAGATTCCAGGAGGAAGTACTGGC
GAAGTGCCTCATGGATCATGGGTTGACAGCAGCATTTTCCAGAAATCCTAAAAAGCTTCACTAACTATT
GGGATGTTGGTGTCTTTGAGTGAGGAAGAGATCCAGCAGACATGTGAGATGCTACAGCAGTGAAGAGG
AATTCATTAATGATATTTCTGGGGTAAACCCCTAGAAGTGGAGATGGCAGGGATAGAATACATGAATGA
TGATCCTGGCATGGTGGATGTTCTTTACGCCAAAGTCCATATGAAAGATGGCTCCAACAGGCTACAAGAA
TTAGTTGATCGAGTCTGGAACGTTTTTCAGGCATCTGGACTAATAGTGAAGAGTGAATAGTGTGAAC
TGCAATGCTACAGTTATGAATACACTATTCAGGAAAGACCCCAATGCTGAAGGCAGGTACAATCTCTACAC
AGCGGAAGGCAAATATATCTTCAAGGAAAGAGAATCATTGATGGCCGAAATATTTTAAAGAGCTTTGCC
TTGTTGCCAGGCTGGAGTACAATGATGAATCTCCGCTCACTGCAACCTGTGCCTCCCGGGTTCAAGTG
ATTCTCTGCCTCAGCCTCCAAGTAGCTGGGATTACAGGTGTCTCTGATGCATATTCTCAGAGCCTACC
AGGAAAATCC

ACGGTACGCGGCCGCTCGAGCAGAACTCATCTCAGAAGAGGATCTGGCAGCAAATGATATCTGGATT
ACAAGGATGACGACGATAAGGTTTAA



[View online »](#)

Protein Sequence: >RC231210 representing NM_001198799
Red=Cloning site Green=Tags(s)

MEVLRPQLIRIDGRNYRKNPVQEQTQHEEDEEDFYQGSMECADEPCDAYEVEQTPQGFRSTLRAPSLLY
 NLIHLNLSNDCGFQKITLDCQNIYTWKSRHIVGKRGDTRKKIEMETKTSISIPKPGQDGEIVITGQHRNG
 VISARTRIDVLLDTRFRKQPFTHFLAFFLNEVEVQEGFLRFQEEVLAKCSMDHGVDSISIFQNPKKLHLTI
 GMLVLLSEEEIQQTCEMLQQCKEEFINDISGGKPLEVEMAGIEMNDDPGMVDVLYAKVHMKDGSNRLQE
 LVDRVLERFQASGLIVKEWNSVKLHATVMNTLFRKDPNAEGRYNLYTAEGKYIFKERESFDGRNILKSFA
 LLPRLEYNDASAHCNLCPLGSSDSPAASQVAGITGVSDAYSQSLPGKS

TRTRPLEQKLISEEDLAANDILDYKDDDDKV

Chromatograms: https://cdn.origene.com/chromatograms/mk8057_c12.zip

Restriction Sites: SgfI-MluI

Cloning Scheme:



ACCN: NM_001198799

ORF Size: 1200 bp

OTI Disclaimer: The molecular sequence of this clone aligns with the gene accession number as a point of reference only. However, individual transcript sequences of the same gene can differ through naturally occurring variations (e.g. polymorphisms), each with its own valid existence. This clone is substantially in agreement with the reference, but a complete review of all prevailing variants is recommended prior to use. [More info](#)

OTI Annotation: This clone was engineered to express the complete ORF with an expression tag. Expression varies depending on the nature of the gene.

Components: The ORF clone is ion-exchange column purified and shipped in a 2D barcoded Matrix tube containing 10ug of transfection-ready, dried plasmid DNA (reconstitute with 100 ul of water).

Reconstitution Method:

1. Centrifuge at 5,000xg for 5min.
2. Carefully open the tube and add 100ul of sterile water to dissolve the DNA.
3. Close the tube and incubate for 10 minutes at room temperature.
4. Briefly vortex the tube and then do a quick spin (less than 5000xg) to concentrate the liquid at the bottom.
5. Store the suspended plasmid at -20°C. The DNA is stable for at least one year from date of shipping when stored at -20°C.

RefSeq: [NM_001198799.3](#)

RefSeq ORF: 1203 bp

Locus ID: 51008

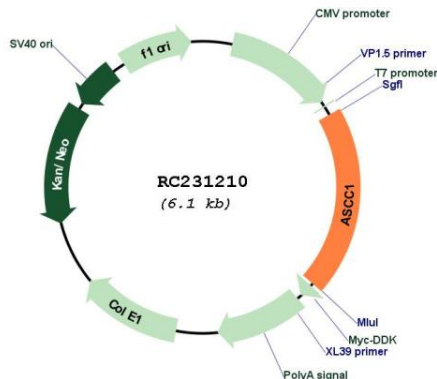
UniProt ID: [Q8N9N2](#)

Cytogenetics: 10q22.1

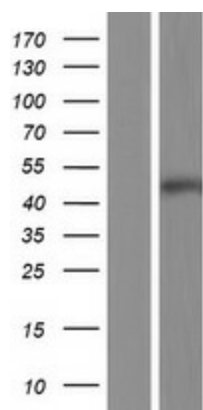
MW: 46 kDa

Gene Summary: This gene encodes a subunit of the activating signal cointegrator 1 (ASC-1) complex. The ASC-1 complex is a transcriptional coactivator that plays an important role in gene transactivation by multiple transcription factors including activating protein 1 (AP-1), nuclear factor kappa-B (NF- κ B) and serum response factor (SRF). The encoded protein contains an N-terminal KH-type RNA-binding motif which is required for AP-1 transactivation by the ASC-1 complex. Mutations in this gene are associated with Barrett esophagus and esophageal adenocarcinoma. Alternatively spliced transcripts encoding multiple isoforms have been observed for this gene. [provided by RefSeq, Dec 2011]

Product images:



Circular map for RC231210



Western blot validation of overexpression lysate (Cat# [LY434209]) using anti-DDK antibody (Cat# [TA50011-100]). Left: Cell lysates from untransfected HEK293T cells; Right: Cell lysates from HEK293T cells transfected with RC231210 using transfection reagent MegaTran 2.0 (Cat# [TT210002]).