

## Product datasheet for RC231203

### IRF3 (NM\_001197123) Human Tagged ORF Clone

#### Product data:

Product Type:	Expression Plasmids
Product Name:	IRF3 (NM_001197123) Human Tagged ORF Clone
Tag:	Myc-DDK
Symbol:	IRF3
Synonyms:	IIAE7
Mammalian Cell Selection:	Neomycin
Vector:	pCMV6-Entry (PS100001)
E. coli Selection:	Kanamycin (25 ug/mL)
ORF Nucleotide Sequence:	>RC231203 representing NM_001197123 Red=Cloning site Blue=ORF Green=Tags(s)

TTTTGTAATACGACTCACTATAGGGCGGCCGGAATTCGTCGACTGGATCCGGTACCGAGGAGATCTGCC  
GCC**CGATCGCC**

ATGGTGGGGCGCAAGCAGGGTTGGAGCTGCAGGGTTACGGGAATAAAACCGGAAAGCCGGCCTGGGCCG  
AGGCCACTGGTGCATATGTTCCCGGGAGGGATAAGCCAGACCTGCCAACCTGGAAGAGGAATTTCCGCTC  
TGCCCTCAACCGCAAAGAAGGGTTGCGTTTAGCAGAGGACCGGAGCAAGGACCCTCACGACCACATAAA  
ATCTACGAGTTTGTGAACCTCAGGAGTTGGGACTTTTCCAGCCAGACACCTCTCCGGACACCAATGGTG  
GAGGCAGTACTTCTGATACCCAGGAAGACATTCTGGATGAGTTACTGGTAACATGGTGTGGCCCCACT  
CCCAGATCCGGGACCCCAAGCCTGGCTGTAGCCCTGAGCCCTGCCCTCAGCCCTGCGGAGCCCCAGC  
TTGGACAATCCCACTCCCTTCCCAAACCTGGGGCCCTCTGAGAACCCACTGAAGCGGCTGTTGGTCCGG  
GGGAAGAGTGGGAGTTCGAGGTGACAGCCTTCTACCGGGCCGCAAGTCTTCCAGCAGACCATCTCCTG  
CCCGGAGGGCCTGCGGCTGGTGGGTCCGAAGTGGGAGACAGGACGCTGCCTGGATGGCCAGTCACACTG  
CCAGACCCTGGCATGTCCTGACAGACAGGGGAGTGATGAGCTACGTGAGGCATGTGCTGAGCTGCCTGG  
GTGGGGACTGGCTCTCTGGCGGGCCGGCAGTGGCTCTGGGCCAGCGGCTGGGCACTGCCACACATA  
CTGGGCAGTGAGCGAGGAGCTGCTCCCCAACAGCGGCCATGGCCCTGATGGCGAGGTCCCCAAGGACAAG  
GAAGGAGCGGTGTTGACCTGGGGCCCTCATTGTAGATCTGATTACCTTACGGAAGGAAGCGGACGCT  
CACCACGCTATGCCCTCTGGTTCTGTGTGGGGAGTCATGGCCCCAGGACCAGCCGTGGACCAAGAGGCT  
CGTGATGGTCAAGTTGTGCCACGTGCCTCAGGGCCTTGGTAGAAATGGCCCGGTAGGGGGTGCCTCC  
TCCCTGGAGAATACTGTGGACCTGCACATTTCCAACAGCCACCCACTCTCCCTCACCTCCGACCAGTACA  
AGGCCTACCTGCAGGACTTGGTGGAGGGCATGGATTTCCAGGGCCCTGGGGAGAGC

**ACGCGT**ACGCGGCCGCTCGAGCAGAAACTCATCTCAGAAGAGGATCTGGCAGCAATGATATCCTGGATT  
ACAAGGATGACGACGATAAGGTTTAA



[View online »](#)

**Protein Sequence:** >RC231203 representing NM\_001197123  
Red=Cloning site Green=Tags(s)

MVGRKQGWSRVGTGIKPGKPAWAEATGAYVPGRDKPDLPWKRNFERSALNRKEGLRLAEDRSKDPHDPHK  
 IYEFVNSGVGDFSQPDTSPDTNGGGSTSDTQEDILDELLGNMVLAPLPDPGPPSLAVAPEPCPQLRSPS  
 LDNPTFPFNLGPSENPLKRLLVPGEWEFEVTA FYRGRQVFQQT I SCPEGLRLVGSEVGDRTLPGWPVTL  
 PDPGMSL TDRGVMSYVRHVL SCLGGGLALWRAGQWLWAQRLGHCHTYWAVSEELL PNSGHGPDGEV PKDK  
 EGGVFDLGPFI VDLITFTEGSGRSPRYALWFCVGESWPDQDPWTKRLVMVKVVP TCLRALVEMARVGGAS  
 SLENTVDLHISNSHPLSLTSDQYKAYLQDLVEGMDFQGGPES

TRTRPLEQKLISEEDLAANDILDYKDDDDKV

**Chromatograms:** [https://cdn.origene.com/chromatograms/mk8056\\_f08.zip](https://cdn.origene.com/chromatograms/mk8056_f08.zip)

**Restriction Sites:** SgfI-MluI

**Cloning Scheme:**



**ACCN:** NM\_001197123

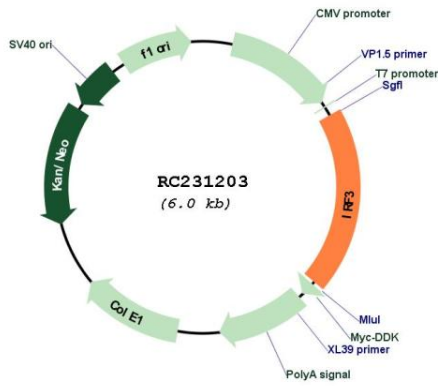
**ORF Size:** 1176 bp

**OTI Disclaimer:** Due to the inherent nature of this plasmid, standard methods to replicate additional amounts of DNA in E. coli are highly likely to result in mutations and/or rearrangements. Therefore, OriGene does not guarantee the capability to replicate this plasmid DNA. Additional amounts of DNA can be purchased from OriGene with batch-specific, full-sequence verification at a reduced cost. Please contact our customer care team at [custsupport@origene.com](mailto:custsupport@origene.com) or by calling 301.340.3188 option 3 for pricing and delivery.

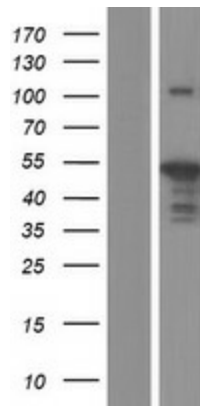
The molecular sequence of this clone aligns with the gene accession number as a point of reference only. However, individual transcript sequences of the same gene can differ through naturally occurring variations (e.g. polymorphisms), each with its own valid existence. This clone is substantially in agreement with the reference, but a complete review of all prevailing variants is recommended prior to use. [More info](#)

<b>OTI Annotation:</b>	This clone was engineered to express the complete ORF with an expression tag. Expression varies depending on the nature of the gene.
<b>Components:</b>	The ORF clone is ion-exchange column purified and shipped in a 2D barcoded Matrix tube containing 10ug of transfection-ready, dried plasmid DNA (reconstitute with 100 ul of water).
<b>Reconstitution Method:</b>	<ol style="list-style-type: none"><li>1. Centrifuge at 5,000xg for 5min.</li><li>2. Carefully open the tube and add 100ul of sterile water to dissolve the DNA.</li><li>3. Close the tube and incubate for 10 minutes at room temperature.</li><li>4. Briefly vortex the tube and then do a quick spin (less than 5000xg) to concentrate the liquid at the bottom.</li><li>5. Store the suspended plasmid at -20°C. The DNA is stable for at least one year from date of shipping when stored at -20°C.</li></ol>
<b>RefSeq:</b>	<a href="#">NM_001197123.2</a>
<b>RefSeq ORF:</b>	1179 bp
<b>Locus ID:</b>	3661
<b>UniProt ID:</b>	<a href="#">Q14653</a>
<b>Cytogenetics:</b>	19q13.33
<b>Protein Families:</b>	Druggable Genome, Transcription Factors
<b>Protein Pathways:</b>	Cytosolic DNA-sensing pathway, RIG-I-like receptor signaling pathway, Toll-like receptor signaling pathway
<b>MW:</b>	43.4 kDa
<b>Gene Summary:</b>	This gene encodes a member of the interferon regulatory transcription factor (IRF) family. The encoded protein is found in an inactive cytoplasmic form that upon serine/threonine phosphorylation forms a complex with CREBBP. This complex translocates to the nucleus and activates the transcription of interferons alpha and beta, as well as other interferon-induced genes. The protein plays an important role in the innate immune response against DNA and RNA viruses. Mutations in this gene are associated with Encephalopathy, acute, infection-induced, herpes-specific, 7. [provided by RefSeq, Sep 2020]

Product images:



Circular map for RC231203



Western blot validation of overexpression lysate (Cat# [LY434202]) using anti-DDK antibody (Cat# [TA50011-100]). Left: Cell lysates from untransfected HEK293T cells; Right: Cell lysates from HEK293T cells transfected with RC231203 using transfection reagent MegaTran 2.0 (Cat# [TT210002]).