

## Product datasheet for RC231200

### LIMS1 (NM\_001193485) Human Tagged ORF Clone

#### Product data:

Product Type:	Expression Plasmids
Product Name:	LIMS1 (NM_001193485) Human Tagged ORF Clone
Tag:	Myc-DDK
Symbol:	LIMS1
Synonyms:	PINCH; PINCH-1; PINCH1
Mammalian Cell Selection:	Neomycin
Vector:	pCMV6-Entry (PS100001)
E. coli Selection:	Kanamycin (25 ug/mL)
ORF Nucleotide Sequence:	>RC231200 representing NM_001193485 Red=Cloning site Blue=ORF Green=Tags(s)

TTTTGTAATACGACTCACTATAGGGCGGCCGGAATTCGTCGACTGGATCCGGTACCGAGGAGATCTGCC  
GCC**CGATCGCC**

ATGGCCTTCTCAGGCCGAGCGGCCCTGCATTATCCCAGAGAACGAAGAAATCCCCGAGCAGCCCTTA  
ACACTGTCCACGAGGCCAATGGGACCGAGGACGAGAGGGCTGTTCCAACTGCAGCGCAGGCACAGTGA  
CGTGAAAGTCTACAAGGAGTTCTGTGACTTTTATGCGAAATTCACATGGCCAACGCCCTGGCCAGCGCC  
ACTTGGCAGCGCTGCAAGGGCGGCTTTGCGCCCGCTGAGAAGATCGTGAACAGTAATGGGGAGCTGTACC  
ATGAGCAGTGTTTCGTGTGCGCTCAGTGCTTCCAGCAGTTCACAGAAGGACTCTTCTATGAGTTGAAGG  
AAGAAAGTACTGTGAACATGACTTTTCAGATGCTCTTTGCCCTTGTCTGTCATCAGTGTGGTGAATTCATC  
ATTGGCCGAGTTATCAAAGCCATGAATAACAGCTGGCATCCGGAGTGCTTCGGCTGTGACCTCTGCCAGG  
AAGTTCTGGCAGATATCGGGTTTGTCAAGAATGCTGGGAGACACCTGTGTGCGCCCTGTCATAATCGTGA  
GAAAGCCAGAGCCCTTGGGAAATACATCTGCCAGAAATGCCATGCTATCATCGATGAGCAGCCTCTGATA  
TTCAAGAACGACCCCTACCATCCAGACCATTTCAACTGCGCCAACCTGCGGGAAGGAGCTGACTGCCGATG  
CACGGGAGCTGAAAGGGGAGCTATACTGCCTCCATGCCATGATAAAATGGGGTCCCCATCTGTGGTGC  
TTGCCACGCGCCATCGAAGGGCGCGTGGTGAACGCTATGGCAAGCAGTGGCATGTGGAGCATTTTGT  
TGTGCCAAGTGTGAGAAACCCCTTTCTGGACATCGCCATTATGAGAGGAAAGGCCCTGGCATATTGTGAAA  
CTACTATAACCAGCTATTTGGTATGTTTGCCTCCACTGCAATCGTGTTATAGAAGGTGATGTGGTCTC  
TGCTCTTAATAAGGCCTGGTGCCTGAACTGCTTTGCCTGTTCTACCTGCAACACTAAATTAACACTCAAG  
AATAAGTTTGTGGAGTTTGCATGAAGCCAGTCTGTAAGAAGTGCTATGAGAAATTTCCATTGGAGCTGA  
AGAAAAGACTTAAGAACTAGCTGAGACCTTAGGAAGGAAA

**ACGCGT**ACGCGGCCGCTCGAGCAGAACTCATCTCAGAAGAGGATCTGGCAGCAATGATATCCTGGATT  
ACAAGGATGACGACGATAAGGTTTAA



[View online »](#)

**Protein Sequence:** >RC231200 representing NM\_001193485  
Red=Cloning site Green=Tags(s)

MAFSGRARPCIIPENEEIPRAALNTVHEANGTEDERAVSKLQRRHSDVKVYKEFCDFYAKFNMANALASA  
 TCERCKGGFAPAEEKIVNSGELYHEQCFVCAQCFQQFPEGLFYEFEGRKYCEHDFQMLFAPCCHQCGEFI  
 IGRVIKAMNNSWHPECFRCDLCOEVLADIGFVKNAGRHLCRPCHNREKARGLGKYICQKCHAIIDEQPLI  
 FKNDPYHPDHFNCANCGKELTADARELKGELYCLPCHDKMGVPICGACRRPIEGRVVNAMGKQWHVEHFV  
 CAKCEKPFLLGHRHYERKGLAYCETHYNQLFGDVCFHCNRVIEGDVVSALNKAWCVNCFACSTCNTKLT  
 LK NKFVEFDMKPVCKKCYEKFPLELKKRLKLAETLGRK

TRTRPLEQKLISEEDLAANDILDYKDDDDKV

**Chromatograms:** [https://cdn.origene.com/chromatograms/mk8056\\_c12.zip](https://cdn.origene.com/chromatograms/mk8056_c12.zip)

**Restriction Sites:** SgfI-MluI

**Cloning Scheme:**



**ACCN:** NM\_001193485

**ORF Size:** 1161 bp

**OTI Disclaimer:** The molecular sequence of this clone aligns with the gene accession number as a point of reference only. However, individual transcript sequences of the same gene can differ through naturally occurring variations (e.g. polymorphisms), each with its own valid existence. This clone is substantially in agreement with the reference, but a complete review of all prevailing variants is recommended prior to use. [More info](#)

**OTI Annotation:** This clone was engineered to express the complete ORF with an expression tag. Expression varies depending on the nature of the gene.

**Components:** The ORF clone is ion-exchange column purified and shipped in a 2D barcoded Matrix tube containing 10ug of transfection-ready, dried plasmid DNA (reconstitute with 100 ul of water).

**Reconstitution Method:**

1. Centrifuge at 5,000xg for 5min.
2. Carefully open the tube and add 100ul of sterile water to dissolve the DNA.
3. Close the tube and incubate for 10 minutes at room temperature.
4. Briefly vortex the tube and then do a quick spin (less than 5000xg) to concentrate the liquid at the bottom.
5. Store the suspended plasmid at -20°C. The DNA is stable for at least one year from date of shipping when stored at -20°C.

**RefSeq:** [NM\\_001193485.3](#)

**RefSeq ORF:** 1164 bp

**Locus ID:** 3987

**UniProt ID:** [P48059](#)

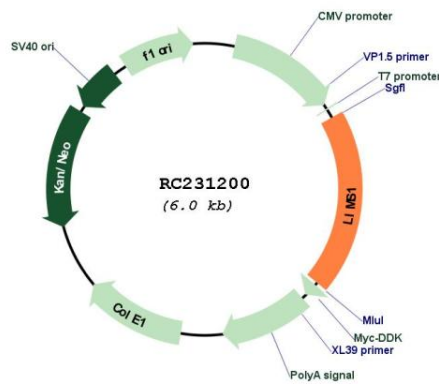
**Cytogenetics:** 2q12.3

**Protein Families:** Druggable Genome

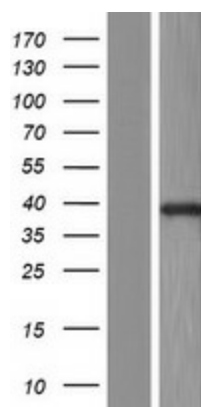
**MW:** 44.8 kDa

**Gene Summary:** The protein encoded by this gene is an adaptor protein which contains five LIM domains, or double zinc fingers. The protein is likely involved in integrin signaling through its LIM domain-mediated interaction with integrin-linked kinase, found in focal adhesion plaques. It is also thought to act as a bridge linking integrin-linked kinase to NCK adaptor protein 2, which is involved in growth factor receptor kinase signaling pathways. Its localization to the periphery of spreading cells also suggests that this protein may play a role in integrin-mediated cell adhesion or spreading. Several transcript variants encoding different isoforms have been found for this gene. [provided by RefSeq, Jul 2010]

### Product images:



Circular map for RC231200



Western blot validation of overexpression lysate (Cat# [LY434199]) using anti-DDK antibody (Cat# [TA50011-100]). Left: Cell lysates from untransfected HEK293T cells; Right: Cell lysates from HEK293T cells transfected with RC231200 using transfection reagent MegaTran 2.0 (Cat# [TT210002]).