

Product datasheet for **RC231198**

TPBGL (NM_001195528) Human Tagged ORF Clone

Product data:

Product Type: Expression Plasmids
Product Name: TPBGL (NM_001195528) Human Tagged ORF Clone
Tag: Myc-DDK
Symbol: TPBGL
Mammalian Cell Selection: Neomycin
Vector: pCMV6-Entry (PS100001)
E. coli Selection: Kanamycin (25 ug/mL)
ORF Nucleotide Sequence: >RC231198 representing NM_001195528
Red=Cloning site Blue=ORF Green=Tags(s)

TTTTGTAATACGACTCACTATAGGGCGGCCGGAATTCGTCGACTGGATCCGGTACCGAGGAGATCTGCC
GCC**CGATCGCC**

ATGGCCCCGCGCGGGACAGCCGGGGCTCCAGGGGCTGCTGCTCGTGGCGGGCGCTGAGCCAGCCCC
CGGCACCTGCCCTCCAGTGTACTGCTTCGGCGGCCCAAGCTGCTGCTGCGCTGCGCGTGGGAGC
CGAGCTCCGCCAGCCTCCGCGGGACGTGCCGCCGACGCGCGCAACCTCACCATCGTAGGCGCAACCTG
ACGGTGTGCGCGGGCCGCTTCGCGGGCGGGACGGGACGGGACCGAGGCGGGCGCTGCGCCTGC
CGTCTTGAGCGCGTGCCTCAGCACAAACACATCGAGGTGGTGGAGGACGGCGCTTCGACGGGT
GCCAGCCTGGCGCGCTCGACCTCAGCCACAACCCGCTGCGCGCCTGGCGGGCGCGCTTCGCGGG
CTGCCCGCGTGCCTCGCTGCAGCTCAACCACGCGTGGTGCAGCGGGCCCGCGCTGCTGGCCGCGC
TGGACGCTGCGCTGGCACCCTGGCCGAGCTTCGCTGCTGGCCTAGCGGGCAACGCGCTGAGCCGTCT
GCCGCCAGCCGCTGCGCTGGCGCGCTGGAGCAGCTGGACGTGCGCCTCAACGCGTGGCCGGCCTG
GACCCCGACGAGCTGCGCGCTGGAGCGCATGGCGCCTCCCGGGCCGCGCTGCTGCTCGCCGACA
ACCCCTGCGTGCCTGTGCCGACGCCCTGCTGGCCTGGTGGCAACGCCACGGAGCGCTGCC
CGACTCGCGCGCTGCGTGCCTGCCCGCCCGGGCGCTGCTAGACGGCCGCTACTGGACTGGACGG
GCGCGCTTCGCTGCGCGACAGCGCGCGCAGCTCGCGGAGAGGAGGCGGAGCGCCGCGCCGCGAGC
TGAAGCCTCCTACGTGTTCTTCGGGCTGGTGGTGGCACTCATCGCCTCATCTTCTCATGGTGTCTA
CCTAAACCGCGCGCATCCAGCCTGGATGCGCAACCTGCGCGAGGCGTGGCCGGGACAGATGGAGGGC
TACCACTACCGCTACGAGCAGGACGCCGACCCGCGCGCGCCCGCGCCCGCGCGCCCGCGGGTCCC
GCGCCACCTCCCGGGCTCGGGGCTC

ACGCGTACGCGGGCCGCTCGAGCAGAACTCATCTCAGAAGAGGATCTGGCAGCAATGATATCCTGGATT
ACAAGGATGACGACGATAAGGTTTAA



[View online »](#)

Protein Sequence: >RC231198 representing NM_001195528
Red=Cloning site Green=Tags(s)

MAPRAGQPGLQGLLLVAAALSQPAAPCPFQCYCFGGPKLLLRCSGAELRQPPRDVPPDARNLTIVGANL
 TVLRAAAFAGGDGDQAAAGVRLPLLALRLTHNHEVVEDGAFDGLPSLAALDLSHNPLRALGGGAFRG
 LPALRSLQLNHALVRGGPALLAALDAALAPLAELRLLGLAGNALSRPPAALRLARLEQLDVRNLALAGL
 DPDELRALERDGLPGPRLLLADNPLRCGCAARPLLAWLRNATERVPSRRLRCAAPRALLDRPLLDLDG
 ARLRCADSGADARGEAEAAAGPELEASYVFFGLVLAALIGLIFLMVLYLNRRGIQRWNRNLREACRDMQEG
 YHYRYEQDADPRRAPAPAAPAGSRATSPGSGL

TRTRPLEQKLISEEDLAANDILDYKDDDDKV

Chromatograms: https://cdn.origene.com/chromatograms/ja1335_f03.zip

Restriction Sites: Sgfl-MluI

Cloning Scheme:

Cloning sites used for ORF Shuttling:



* The last codon before the Stop codon of the ORF

ACCN: NM_001195528

ORF Size: 1146 bp

OTI Disclaimer: The molecular sequence of this clone aligns with the gene accession number as a point of reference only. However, individual transcript sequences of the same gene can differ through naturally occurring variations (e.g. polymorphisms), each with its own valid existence. This clone is substantially in agreement with the reference, but a complete review of all prevailing variants is recommended prior to use. [More info](#)

OTI Annotation: This clone was engineered to express the complete ORF with an expression tag. Expression varies depending on the nature of the gene.

Components: The ORF clone is ion-exchange column purified and shipped in a 2D barcoded Matrix tube containing 10ug of transfection-ready, dried plasmid DNA (reconstitute with 100 ul of water).

- Reconstitution Method:**
1. Centrifuge at 5,000xg for 5min.
 2. Carefully open the tube and add 100ul of sterile water to dissolve the DNA.
 3. Close the tube and incubate for 10 minutes at room temperature.
 4. Briefly vortex the tube and then do a quick spin (less than 5000xg) to concentrate the liquid at the bottom.
 5. Store the suspended plasmid at -20°C. The DNA is stable for at least one year from date of shipping when stored at -20°C.

RefSeq: [NM_001195528.2](#)

RefSeq ORF: 1149 bp

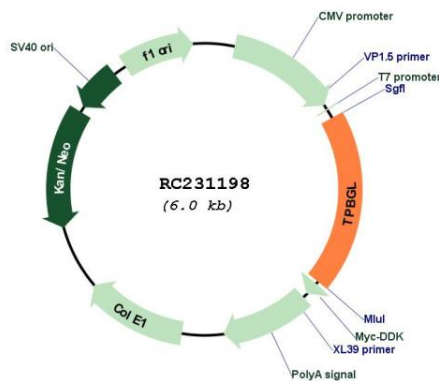
Locus ID: 100507050

UniProt ID: [P0DKB5](#)

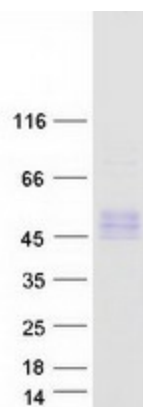
Cytogenetics: 11q13.4

MW: 40.8 kDa

Product images:



Circular map for RC231198



Coomassie blue staining of purified TPBGL protein (Cat# [TP331198]). The protein was produced from HEK293T cells transfected with TPBGL cDNA clone (Cat# RC231198) using MegaTran 2.0 (Cat# [TT210002]).