

Product datasheet for RC231196

ANHX (NM_001191054) Human Tagged ORF Clone

Product data:

Product Type:	Expression Plasmids
Product Name:	ANHX (NM_001191054) Human Tagged ORF Clone
Tag:	Myc-DDK
Symbol:	ANHX
Mammalian Cell Selection:	Neomycin
Vector:	pCMV6-Entry (PS100001)
E. coli Selection:	Kanamycin (25 ug/mL)
ORF Nucleotide Sequence:	>RC231196 representing NM_001191054 Red=Cloning site Blue=ORF Green=Tags(s)

TTTTGTAATACGACTCACTATAGGGCGGCCGGGAATTCGTCGACTGGATCCGGTACCGAGGAGATCTGCCGCCCGATCGCC

ATGCAGAGCTTCTGACTCTGCTGAAGGAGCATGAGGACACCTGTGCACCCCGCGGAGCTGGTGACCC
TTGCGGGCAGACTGTGCCGGGACTTCCAGGATGACCTTGCCCAACTGCAGCCTTTGGTCACAGCCATTCT
GGACAGCCAGTCCGCCTGCATCTCTGGACAACGCAGATGTGGCCCTGGCGTGCCCGGTCTCTGGAC
CAGCAGGAGCAGCAGCAGGCGGCTTGGCCCTCCTGGAGGGGTGCCAGGTGCCGGGAGGCCAGCCAGGAGT
TAGTGCAGCTCTGGAACGACATCCACTACCGTCTGGTCATGAGGAGGCTGGGCGTGGCTGCCCTCACCC
GGTGCAGAAGTTCGCTGCAGGAAGAGGAACCCCGCCCTCCTCTGCCAGAGGGGCTGAAGAGC
CGGAACTTCCCCAGAGAGGTTTCGTGAGAAGCTGCACAATTTTCGCTGTGGGGTGAACACCAACCCAGCA
AGGCTGAGAGGGAGAATTGGCATTGGAGACGAGCTTGACCCCTGAGCAGGTGTACAACCTGGTTTGCCAA
TTACCGGCGCCGCAAAGAGCCCTTCCCCAGCACATGAAGCCAGCCAGCAGGCCACAGCTGAAGACCT
GGTGCAGGGAGAGGGTCTGACCTCTGCAGCCCTCAGGCAACCCCGTGTGACTCTGGGTTTGTGG
ACAGGCCCTCAGTGGTCAGAGAACGTGAGGAAAAGGGCCTCCACAGTCCCACAGACCACCAAGGACC
ATGGGAGCCACTGGCCTTAGCCCGGACTTTCCCGCAGATGAGACAGTCTCAAAGCCACTGGATGTCAGC
GGCCATCCCAGAGCGTGAATTTGAGGAGGGTCTGGGCAAGCAGTGGACGGACAGAGCTACGGGTGG
GCAGCTTCTGGTGACACAGCCCACTGCAAGCTCCTGAATTCATCCTACCCAGAGCCCTCCAGAGCT
GGCCCCAGCCCATCTGCCTTCCCCGGCCCTGTGTCTGCCATGGAGCTGAGCCAGGCCCTGCCCTCCAGC
CAGGTGCAGTGTCTGATAGCCAGGCCTCTGGTATGCCTTCTGGGGAGCCAGGATGCTCCTTGAGTTTT
CAGGGAGCAGCCTGGGC

ACGCGTACGCGGCCGCTCGAGCAGAACTCATCTCAGAAGAGGATCTGGCAGCAATGATATCCTGGATT
ACAAGGATGACGACGATAAGGTTTAA



[View online »](#)

Protein Sequence: >RC231196 representing NM_001191054
Red=Cloning site Green=Tags(s)

MQSFLTLLKEHEDTCAPPAELVTLA⁺GRLCRDFQDDLAQLQPLVTA⁺ILDSQLRLHLLDNADVALACARVLD
 QQEQQAACRLLEGCVPGGSQELVQLWNDIHYRLVMRRLGVAALTPVQKFR⁺CRKRNP⁺PPPSL⁺CPEGLKS
 RNFPREVREKLHNF⁺AVGVNTNPSKAERENLALETSLTPEQVYNWFANYRRRQRALPQHMKPAQQATAEDP
 GARERGPDLLQPSGNPRVDSGFVDRPQWSEEREK⁺GPPQSPQT⁺TQGPWEPLALAPDFPADETVSKPLDVS
 GHPQSVQLEEGLGTSSGRTELRVGSFLVTQPPLQAPEFILTQSPPELAPAPSAFPGPVSAMELSQALPSS
 VQ⁺QCSDSQASGDAFWGARM⁺LLEFGSSLG

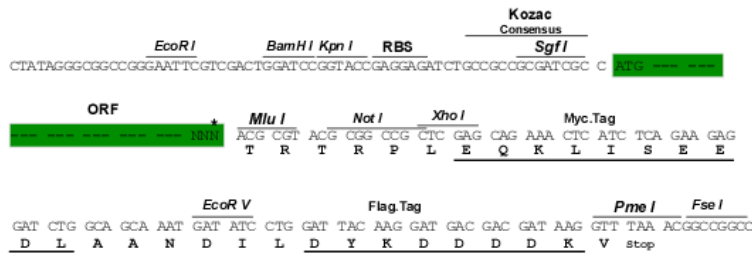
TRTRPLEQKLISEEDLAANDILDYKDDDDKV

Chromatograms: https://cdn.origene.com/chromatograms/ja1296_b11.zip

Restriction Sites: SgfI-MluI

Cloning Scheme:

Cloning sites used for ORF Shuttling:



* The last codon before the Stop codon of the ORF

ACCN: NM_001191054

ORF Size: 1137 bp

OTI Disclaimer: The molecular sequence of this clone aligns with the gene accession number as a point of reference only. However, individual transcript sequences of the same gene can differ through naturally occurring variations (e.g. polymorphisms), each with its own valid existence. This clone is substantially in agreement with the reference, but a complete review of all prevailing variants is recommended prior to use. [More info](#)

OTI Annotation: This clone was engineered to express the complete ORF with an expression tag. Expression varies depending on the nature of the gene.

Components: The ORF clone is ion-exchange column purified and shipped in a 2D barcoded Matrix tube containing 10ug of transfection-ready, dried plasmid DNA (reconstitute with 100 ul of water).

- Reconstitution Method:**
1. Centrifuge at 5,000xg for 5min.
 2. Carefully open the tube and add 100ul of sterile water to dissolve the DNA.
 3. Close the tube and incubate for 10 minutes at room temperature.
 4. Briefly vortex the tube and then do a quick spin (less than 5000xg) to concentrate the liquid at the bottom.
 5. Store the suspended plasmid at -20°C. The DNA is stable for at least one year from date of shipping when stored at -20°C.

RefSeq: [NM_001191054.1](#), [NP_001177983.1](#)

RefSeq ORF: 1140 bp

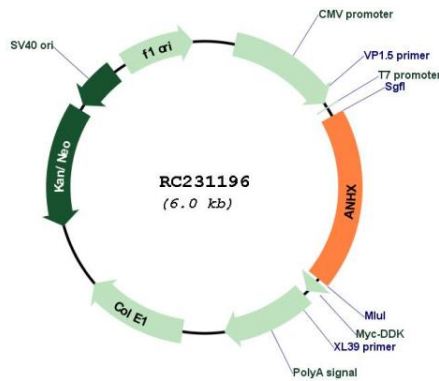
Locus ID: 647589

UniProt ID: [E9PGG2](#)

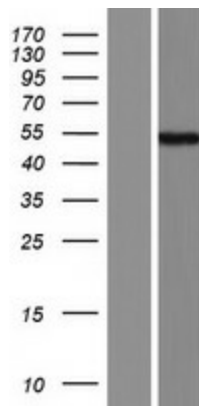
Cytogenetics: 12q24.33

MW: 42.1 kDa

Product images:



Circular map for RC231196



Western blot validation of overexpression lysate (Cat# [LY434195]) using anti-DDK antibody (Cat# [TA50011-100]). Left: Cell lysates from untransfected HEK293T cells; Right: Cell lysates from HEK293T cells transfected with RC231196 using transfection reagent MegaTran 2.0 (Cat# [TT210002]).