

Product datasheet for RC231188

Doublecortin (DCX) (NM_001195553) Human Tagged ORF Clone

Product data:

Product Type:	Expression Plasmids
Product Name:	Doublecortin (DCX) (NM_001195553) Human Tagged ORF Clone
Tag:	Myc-DDK
Symbol:	Doublecortin
Synonyms:	DBCN; DC; LISX; SCLH; XLIS
Mammalian Cell Selection:	Neomycin
Vector:	pCMV6-Entry (PS100001)
E. coli Selection:	Kanamycin (25 ug/mL)
ORF Nucleotide Sequence:	>RC231188 representing NM_001195553 Red=Cloning site Blue=ORF Green=Tags(s)

TTTTGTAATACGACTCACTATAGGGCGGCCGGAATTCGTCGACTGGATCCGGTACCGAGGAGATCTGCC
GCC**CGATCGCC**

ATGGAACCTGATTTTGGACACTTTGACGAAAGAGATAAGACATCCAGGAACATGCGAGGCTCCCGGATGA
ATGGTTGCCTAGCCCCACTCACAGCGCCACTGTAGTTCTACCGAACCCAGAACCTTGCAGGCACTGAG
TAATGAGAAGAAAGCCAAGAAGGTACGTTTCTACCGCAATGGGGACCGCTACTTCAAGGGGATTGTGTAC
GCTGTGCTCTGACCGTTTTTCGACGCTTTGACGCCTTGTGGCTGACCTGACCGGATCTCTGTCTGACA
ACATCAACCTGCCTCAGGGAGTGCCTTACATTTACACCATTGATGGATCCAGGAAGATCGGAAGCATGGA
TGAACCTGGAGGAAGGGAAAGCTATGTCTGTTCCTCAGACAACCTCTTTAAAAAGGTGGAGTACACCAAG
AATGTCAATCCCAACTGGTCTGTCAACGTAACATCTGCCAATATGAAAGCCCCCAGTCCCTTGCTA
GCAGCAACAGTGCACAGGCCAGGGAGAACAAGGACTTTGTGCGCCCCAAGCTGGTTACCATCATCCGCGAG
TGGGGTGAAGCCTCGGAAGGCTGTGCGTGTGCTTCTGAACAAGAAGACAGCCCACTCTTTTGGCAAGTC
CTCACTGATATCAGAAAGCCATCAAACTGGAGACCGGGTGTCAAAAACTCTACACTCTGGATGGAA
AACAGGTAACCTTGTCTCCATGATTTCTTTGGTGTGATGATGTGTTTATTGCCTGTGGTCTGAAAAATT
TCGCTATGCTCAGGATGATTTTTCTCTGGATGAAAATGAATGCCGAGTCATGAAGGGAAACCCATCAGCC
ACAGCTGGCCAAAGGCATCCCCAACCTCAGAAGACTTCAGCCAAGAGCCCTGGTCTATGCGCCGAA
GCAAGTCTCCAGCTGACTCAGGTAACGACCAAGACGCAAAACGGAACCTCCAGCAGCCAGCTCTACCCCC
CAAGTCTAAGCAGTCTCCATCTCTACGCCACCAGTCTGCGAGCCTCCGGAAGCACAAGGTAGACCTG
TACCTGCCTCTGTCTTGGATGACTCGGACTCGCTTGGTATTCCATG

ACGCGTACGCGGCCGCTCGAGCAGAACTCATCTCAGAAGAGGATCTGGCAGCAATGATATCCTGGATT
ACAAGGATGACGACGATAAGGTTAA



[View online »](#)

Reconstitution Method:

1. Centrifuge at 5,000xg for 5min.
2. Carefully open the tube and add 100ul of sterile water to dissolve the DNA.
3. Close the tube and incubate for 10 minutes at room temperature.
4. Briefly vortex the tube and then do a quick spin (less than 5000xg) to concentrate the liquid at the bottom.
5. Store the suspended plasmid at -20°C. The DNA is stable for at least one year from date of shipping when stored at -20°C.

RefSeq: [NM_001195553.2](#)

RefSeq ORF: 1101 bp

Locus ID: 1641

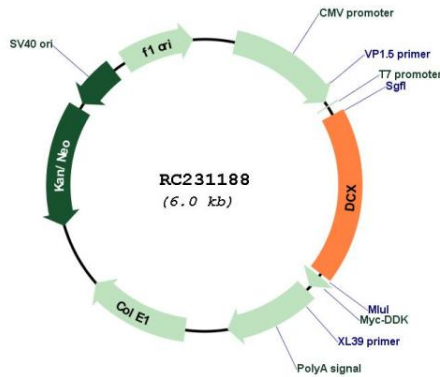
Cytogenetics: Xq23

Protein Families: Druggable Genome

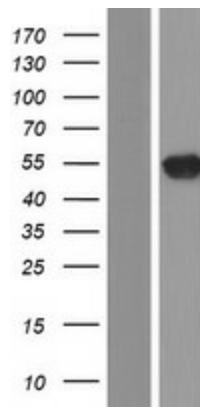
MW: 41.1 kDa

Gene Summary: This gene encodes a member of the doublecortin family. The protein encoded by this gene is a cytoplasmic protein and contains two doublecortin domains, which bind microtubules. In the developing cortex, cortical neurons must migrate over long distances to reach the site of their final differentiation. The encoded protein appears to direct neuronal migration by regulating the organization and stability of microtubules. In addition, the encoded protein interacts with LIS1, the regulatory gamma subunit of platelet activating factor acetylhydrolase, and this interaction is important to proper microtubule function in the developing cortex. Mutations in this gene cause abnormal migration of neurons during development and disrupt the layering of the cortex, leading to epilepsy, cognitive disability, subcortical band heterotopia ("double cortex" syndrome) in females and lissencephaly ("smooth brain" syndrome) in males. Multiple transcript variants encoding different isoforms have been found for this gene. [provided by RefSeq, Sep 2010]

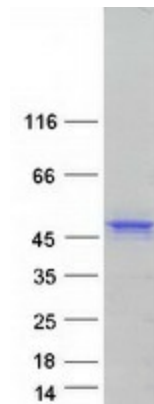
Product images:



Circular map for RC231188



Western blot validation of overexpression lysate (Cat# [LY434187]) using anti-DDK antibody (Cat# [TA50011-100]). Left: Cell lysates from untransfected HEK293T cells; Right: Cell lysates from HEK293T cells transfected with RC231188 using transfection reagent MegaTran 2.0 (Cat# [TT210002]).



Coomassie blue staining of purified DCX protein (Cat# [TP331188]). The protein was produced from HEK293T cells transfected with DCX cDNA clone (Cat# RC231188) using MegaTran 2.0 (Cat# [TT210002]).