

## Product datasheet for RC231187

### C10orf81 (PLEKHS1) (NM\_001193434) Human Tagged ORF Clone

#### Product data:

Product Type:	Expression Plasmids
Product Name:	C10orf81 (PLEKHS1) (NM_001193434) Human Tagged ORF Clone
Tag:	Myc-DDK
Symbol:	C10orf81
Synonyms:	C10orf81; HEL185
Mammalian Cell Selection:	Neomycin
Vector:	pCMV6-Entry (PS100001)
E. coli Selection:	Kanamycin (25 ug/mL)
ORF Nucleotide Sequence:	>RC231187 representing NM_001193434 Red=Cloning site Blue=ORF Green=Tags(s)

TTTTGTAATACGACTCACTATAGGGCGGCCGGAATTCGTCGACTGGATCCGGTACCGAGGAGATCTGCC  
GCC**CGATCGCC**

ATGCAATCTGTGCAGAAGATGTTTAAATGCCACCCTGATGAGGTCATGTCCATCAGAACCACTAACAGGG  
AATACTTCCTCATTGGCCACGACAGGGAGAAGATTAAGACTGGGTCTCCTTCATGTCATCTTCGCCA  
GGATAAAAAGCAACACAGCAGAACACAGAGGAGGAACCTCATTGGGTAATAAAAAGAACCTCTTCTAC  
TCCAGCCCTCCTTGGCCCTCCAGCACATCAGAGGCTGTTGGCTCCAGCTACCAAGAAATGGTCTCC  
AAGACAAGCATTTAATGGAACAAAGTTCTCCAGGATTTAGGCAAACCTCACCTACAAGATTTATCAGAAGC  
CACTCAAGATGTGAAGGAAGAGAATCATTATCTTACTCCTCGAAGTGTTCTTTAGAGTTGGATAATATC  
ATTGCTTCCAGTGATTCTGGTGAATCCATTGAAACTGATGGTCCAGACCAGGTCTCTGGAAGAAATTGAGT  
GTCATTATGAGCCAATGGAATCCTATTTTTTCAAAGAGACATCCCATGAGTCTGTGGATAGCAGCAAAGA  
GGAACCCAGACCCTTCCAGAGACCCAGGATGGGGACCTCCACCTGCAAGAAACAAGGCTCAGGAATTGAT  
TGGTGTCTTTCCCTGCCGATGTGGAAGCACAGACCACAAATGACCAAAGGGTAATATCCCGATGAAA  
GCCAAGTGGAGAACTGAACGTTTTCTTCTCCTCCTGATGTCATCAACTATCTTGCTCTCACAGAAGC  
CACAGGACGGATATGTGTCTCAGTGGGAAGGCCCCACGTTTGGGATGCATATTTGCCACGGAGAT  
CATCTTCTGGCAGTGAATGACCTGAAACCCAGAGCCTGGAGGAGTCTCCCTGTTTCTTACCCGGTCCA  
TCCAGAAGGAGAAATTAAGCTTACCATCGGCAGGATCCCAAATTCAGAGACATTCATGCTGCATCCTG  
TATGTGTCCCTCAAATGCCAAAGTGCTGCACCTTCTCAGCTGGATAAGCCTAGACTGAACAGAGCTCCC  
AAGAGGAGTCCGGCCATTAAGAGCCAGCAGAAAGGAGCCAGGGAG

**ACGCGT**ACGCGGCCGCTCGAGCAGAAACTCATCTCAGAAGAGGATCTGGCAGCAAATGATATCCTGGATT  
ACAAGGATGACGACGATAAGGTTTAA



[View online »](#)

**Protein Sequence:** >RC231187 representing NM\_001193434  
Red=Cloning site Green=Tags(s)

MQSVQKMFKCHPDEVMSIRTTNREYFLIGHDREIKDWVSMSSFRQDIKATQQNTEEELSLGNKRTLFIY  
 SSPLLGPSTSEAVGSSSPRNLQDKHLEQSSPGFRQTHLQDLSEATQDVKEENHYLTPRSVLELDNI  
 IASSDSGESIETDGPDQVSGRIECHYEPMEYFFKETSHESVDSSKEEPQTLPETQDGLHLQEQSSGID  
 WCLSPADVEAQTNDQKGNIPDESQVEKLVNVLSPDPVINYLALTEATGRICVSQWEGPPRLGCIFCHGD  
 HLLAVNDLKPQSLEEVSFLTRSIQKEKLLTIGRIPNSETFHAASCMCPSCQSAAPSQDLKPRLNRP  
 KRSPAIKKSQKQKARE

TRTRPLEQKLISEEDLAANDILDYKDDDDKV

**Chromatograms:** [https://cdn.origene.com/chromatograms/mk8055\\_a10.zip](https://cdn.origene.com/chromatograms/mk8055_a10.zip)

**Restriction Sites:** SgfI-MluI

**Cloning Scheme:**



\* The last codon before the Stop codon of the ORF

**ACCN:** NM\_001193434

**ORF Size:** 1098 bp

**OTI Disclaimer:** The molecular sequence of this clone aligns with the gene accession number as a point of reference only. However, individual transcript sequences of the same gene can differ through naturally occurring variations (e.g. polymorphisms), each with its own valid existence. This clone is substantially in agreement with the reference, but a complete review of all prevailing variants is recommended prior to use. [More info](#)

**OTI Annotation:** This clone was engineered to express the complete ORF with an expression tag. Expression varies depending on the nature of the gene.

**Components:** The ORF clone is ion-exchange column purified and shipped in a 2D barcoded Matrix tube containing 10ug of transfection-ready, dried plasmid DNA (reconstitute with 100 ul of water).

- Reconstitution Method:**
1. Centrifuge at 5,000xg for 5min.
  2. Carefully open the tube and add 100ul of sterile water to dissolve the DNA.
  3. Close the tube and incubate for 10 minutes at room temperature.
  4. Briefly vortex the tube and then do a quick spin (less than 5000xg) to concentrate the liquid at the bottom.
  5. Store the suspended plasmid at -20°C. The DNA is stable for at least one year from date of shipping when stored at -20°C.

**RefSeq:** [NM\\_001193434.2](#)

**RefSeq ORF:** 1101 bp

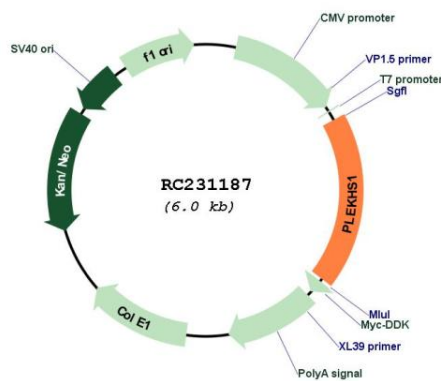
**Locus ID:** 79949

**UniProt ID:** [Q5SXH7](#)

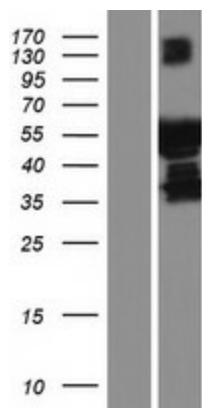
**Cytogenetics:** 10q25.3

**MW:** 41.4 kDa

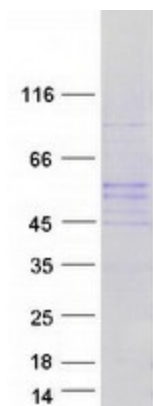
**Product images:**



Circular map for RC231187



Western blot validation of overexpression lysate (Cat# [LY434186]) using anti-DDK antibody (Cat# [TA50011-100]). Left: Cell lysates from untransfected HEK293T cells; Right: Cell lysates from HEK293T cells transfected with RC231187 using transfection reagent MegaTran 2.0 (Cat# [TT210002]).



Coomassie blue staining of purified PLEKHS1 protein (Cat# [TP331187]). The protein was produced from HEK293T cells transfected with PLEKHS1 cDNA clone (Cat# RC231187) using MegaTran 2.0 (Cat# [TT210002]).