

Product datasheet for RC231185

LIMS1 (NM_001193484) Human Tagged ORF Clone

Product data:

Product Type:	Expression Plasmids
Product Name:	LIMS1 (NM_001193484) Human Tagged ORF Clone
Tag:	Myc-DDK
Symbol:	LIMS1
Synonyms:	PINCH; PINCH-1; PINCH1
Mammalian Cell Selection:	Neomycin
Vector:	pCMV6-Entry (PS100001)
E. coli Selection:	Kanamycin (25 ug/mL)
ORF Nucleotide Sequence:	>RC231185 representing NM_001193484 Red=Cloning site Blue=ORF Green=Tags(s)

TTTTGTAATACGACTCACTATAGGGCGGCCGGAATTCGTCGACTGGATCCGGTACCGAGGAGATCTGCC
GCC**CGATCGCC**

ATGACTGCATTACAGCTTAAAGAGCTTTCACATTCAGGTCTCTACAGGAGAAGACGAGATCGCCCCGATA
GTTTGAGAGTAAATGGGTTACCAGAGGAAGAGCTAAGCAACATGGCCAACGCCCTGGCCAGCGCCACTTG
CGAGCGCTGCAAGGGCGGCTTTGCGCCCGCTGAGAAGATCGTGAACAGTAATGGGGAGCTGTACCATGAG
CAGTGTTCGTGTGCGCTCAGTGCTTCCAGCAGTCCAGAAAGGACTCTTCTATGAGTTGAAGGAAGAA
AGTACTGTGAACATGACTTTCAGATGCTCTTTGCCCTTGTCTCATCAGTGTGGTGAATTCATCATTGG
CCGAGTTATCAAAGCCATGAATAACAGCTGGCATCCGGAGTGCTCCGCTGTGACCTCTGCCAGGAAGTT
CTGGCAGATATCGGGTTTGTCAAGAATGCTGGGAGACACCTGTGTGCGCCCTGTGATAATCGTGAGAAAG
CCAGAGGCCCTTGGGAAATACATCTGCCAGAAATGCCATGCTATCATCGATGAGCAGCCTCTGATATTCAA
GAACGACCCCTACCATCCAGACCATTTCAACTGCGCCAACGCGGAAGGAGCTGACTGCCGATGCACGG
GAGCTGAAAGGGGAGCTATACTGCCTCCCATGCCATGATAAAATGGGGTCCCATCTGTGGTGTGGC
GACGGCCATCGAAGGGCGCGTGGTGAACGCTATGGGCAAGCAGTGGCATGTGGAGCATTTTGTGGTGC
CAAGTGTGAGAAACCCTTTCTGGACATCGCCATTATGAGAGGAAAGGCCTGGCATATTGTGAAACTCAC
TATAACCAGCTATTTGGTGTGTTTGTCTCCACTGCAATCGTGTATAGAAGGTGATGTGGTCTCTGCTC
TTAATAAGGCCTGGTGCCTGAACTGCTTTGCCTGTCTACCTGCAACACTAAATTAACACTCAAGAATAA
GTTTGTGGAGTTTGACATGAAGCCAGTCTGTAAGAAGTGCTATGAGAAATTTCCATTGGAGCTGAAGAAA
AGACTTAAGAACTAGCTGAGACCTTAGGAAGGAAA

ACGCGTACGCGGCCGCTCGAGCAGAAACTCATCTCAGAAGAGGATCTGGCAGCAATGATATCCTGGATT
ACAAGGATGACGACGATAAGGTTAA



[View online »](#)

Protein Sequence: >RC231185 representing NM_001193484
Red=Cloning site Green=Tags(s)

MTALQLKELSHSGLYRRRRDRPDSL RVNGLPEEELSNMANALASATCERCKGGFAPAEKIVNSNGELYHE
 QCFVCAQCFQFPEGLFYEFEGRKYCEHDFQMLFAPCCHQCGEF IIGRVIKAMNNSWHPECFRCDLCQEV
 LADIGFVKNAGRHL CRPCHNREKARGLGKYICQKCHAI IDEQPLIFKNDPYHPDHFNCANCGKEL TADAR
 ELKGEL YCLPCHDKMGVPI CGACRRPI EGRVNVAMGKQWHVEHFVCAKCEKPF LGHRHYERKGLAYCETH
 YNQLFGDVCFHCNRVIEGDVVSALNKAWCVNCFACSTCNTKLT LKNKFVEFDMKPVCKKCYEKFPLELKK
 RLKLAETLGRK

TRTRPLEQKLISEEDLAANDILDYKDDDDKV

Chromatograms: https://cdn.origene.com/chromatograms/mk8054_g11.zip

Restriction Sites: SgfI-MluI

Cloning Scheme:



* The last codon before the Stop codon of the ORF

ACCN: NM_001193484

ORF Size: 1086 bp

OTI Disclaimer: The molecular sequence of this clone aligns with the gene accession number as a point of reference only. However, individual transcript sequences of the same gene can differ through naturally occurring variations (e.g. polymorphisms), each with its own valid existence. This clone is substantially in agreement with the reference, but a complete review of all prevailing variants is recommended prior to use. [More info](#)

OTI Annotation: This clone was engineered to express the complete ORF with an expression tag. Expression varies depending on the nature of the gene.

Components: The ORF clone is ion-exchange column purified and shipped in a 2D barcoded Matrix tube containing 10ug of transfection-ready, dried plasmid DNA (reconstitute with 100 ul of water).

- Reconstitution Method:**
1. Centrifuge at 5,000xg for 5min.
 2. Carefully open the tube and add 100ul of sterile water to dissolve the DNA.
 3. Close the tube and incubate for 10 minutes at room temperature.
 4. Briefly vortex the tube and then do a quick spin (less than 5000xg) to concentrate the liquid at the bottom.
 5. Store the suspended plasmid at -20°C. The DNA is stable for at least one year from date of shipping when stored at -20°C.

RefSeq: [NM_001193484.2](#)

RefSeq ORF: 1089 bp

Locus ID: 3987

UniProt ID: [P48059](#)

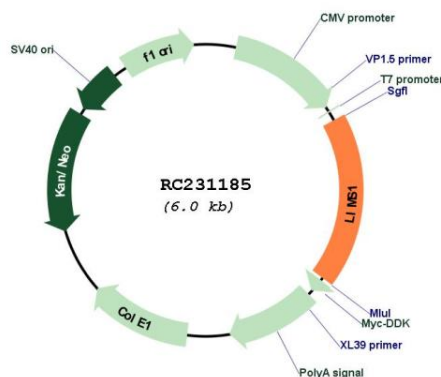
Cytogenetics: 2q12.3

Protein Families: Druggable Genome

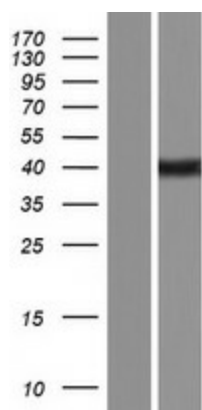
MW: 42 kDa

Gene Summary: The protein encoded by this gene is an adaptor protein which contains five LIM domains, or double zinc fingers. The protein is likely involved in integrin signaling through its LIM domain-mediated interaction with integrin-linked kinase, found in focal adhesion plaques. It is also thought to act as a bridge linking integrin-linked kinase to NCK adaptor protein 2, which is involved in growth factor receptor kinase signaling pathways. Its localization to the periphery of spreading cells also suggests that this protein may play a role in integrin-mediated cell adhesion or spreading. Several transcript variants encoding different isoforms have been found for this gene. [provided by RefSeq, Jul 2010]

Product images:



Circular map for RC231185



Western blot validation of overexpression lysate (Cat# [LY434184]) using anti-DDK antibody (Cat# [TA50011-100]). Left: Cell lysates from untransfected HEK293T cells; Right: Cell lysates from HEK293T cells transfected with RC231185 using transfection reagent MegaTran 2.0 (Cat# [TT210002]).