

## Product datasheet for RC231155

### Nck (NCK1) (NM\_001190796) Human Tagged ORF Clone

#### Product data:

Product Type:	Expression Plasmids
Product Name:	Nck (NCK1) (NM_001190796) Human Tagged ORF Clone
Tag:	Myc-DDK
Symbol:	Nck
Synonyms:	NCK; nck-1; NCKalpha
Mammalian Cell Selection:	Neomycin
Vector:	pCMV6-Entry (PS100001)
E. coli Selection:	Kanamycin (25 ug/mL)
ORF Nucleotide Sequence:	>RC231155 representing NM_001190796 Red=Cloning site Blue=ORF Green=Tags(s)

TTTTGTAATACGACTCACTATAGGGCGGCCGGAATTCGTCGACTGGATCCGGTACCGAGGAGATCTGCC  
GCC**CGATCGCC**

ATGGATTGGTTAAACGCTCTTTAAAGATTTTTTCAGCATTGGAAAAGTGAAAAGAAAACCTAGTGTGCCAG  
ATTCTGCATCTCCTGCTGATGATAGTTTTGTTGACCCAGGGGAACGCTCTATGACCTCAACATGCCCGC  
TTATGTGAAATTTAACTACATGGCTGAGAGAGAGGATGAATTATCATTGATAAAGGGGACAAAGGTGATC  
GTCATGGAGAAATGCAGTATGGGTGGTGGCGTGGTAGCTACAATGGACAAGTTGGATGGTTCCTTCAA  
ACTATGTAAGTGAAGAAGGTGACAGTCCCTTTGGGTGACCATGTGGTTCTCTGTCAGAGAAATTAGCAGC  
AGTCGTCATAAACCCTAAATACTGGGCAAGTGTTCATGTGGTACAGGCTCTTACCCATTAGCTCATCT  
AATGATGAAGAACTTAATTTTCGAGAAAGGAGATGTAATGGATGTTATTGAAAAACCTGAAAATGACCCAG  
AGTGGTGGAAATGCAGGAAGATCAATGGTATGGTGGTCTAGTACCAAAAAACTATGTTACCGTTATGCA  
GAATAATCCATTAACCTCAGGTTTGAACCATCACCTCCACAGTGTGATTACATTAGGCCTTCACTCACT  
GGAAAGTTTGCTGGCAATCCTTGGTATTATGGCAAAGTCAACAGGCATCAAGCAGAAATGGCATTAAATG  
AAAGAGGACATGAAGGGGATTTCTCATTTCGTGATAGTGAATCTTCGCCAAATGATTTCTCAGTATCACT  
AAAAGCACAAAGGGAAAAACAAGCATTTTAAAGTCCAACAAAAGAGACTGTCTACTGCATTGGGCAGCGT  
AAATTCAGCACCATGGAAGAACTTGTAGAACATTACAAAAAGGCCCAATTTTTACAAGTGAACAAGGAG  
AAAAATTATATCTTGTCAAGCATTATCA

**ACGCGT**ACGCGGCCGCTCGAGCAGAAACTCATCTCAGAAGAGGATCTGGCAGCAATGATATCCTGGATT  
ACAAGGATGACGACGATAAGGTTTAA



[View online »](#)



**Reconstitution Method:**

1. Centrifuge at 5,000xg for 5min.
2. Carefully open the tube and add 100ul of sterile water to dissolve the DNA.
3. Close the tube and incubate for 10 minutes at room temperature.
4. Briefly vortex the tube and then do a quick spin (less than 5000xg) to concentrate the liquid at the bottom.
5. Store the suspended plasmid at -20°C. The DNA is stable for at least one year from date of shipping when stored at -20°C.

**RefSeq:** [NM\\_001190796.3](#)

**RefSeq ORF:** 942 bp

**Locus ID:** 4690

**UniProt ID:** [P16333](#)

**Cytogenetics:** 3q22.3

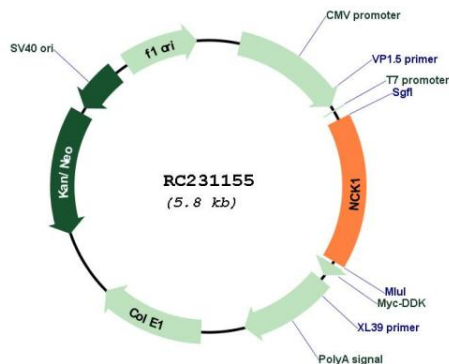
**Protein Families:** Druggable Genome

**Protein Pathways:** Axon guidance, ErbB signaling pathway, Pathogenic Escherichia coli infection, T cell receptor signaling pathway

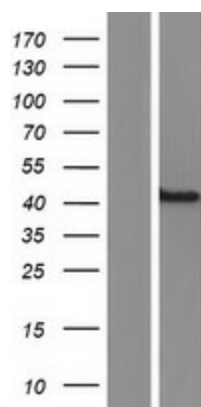
**MW:** 36 kDa

**Gene Summary:** The protein encoded by this gene is one of the signaling and transforming proteins containing Src homology 2 and 3 (SH2 and SH3) domains. It is located in the cytoplasm and is an adaptor protein involved in transducing signals from receptor tyrosine kinases to downstream signal recipients such as RAS. Alternatively spliced transcript variants encoding different isoforms have been found. [provided by RefSeq, Jun 2010]

### Product images:



Circular map for RC231155



Western blot validation of overexpression lysate (Cat# [LY434154]) using anti-DDK antibody (Cat# [TA50011-100]). Left: Cell lysates from untransfected HEK293T cells; Right: Cell lysates from HEK293T cells transfected with RC231155 using transfection reagent MegaTran 2.0 (Cat# [TT210002]).