

Product datasheet for **RC231144**

IRF3 (NM_001197124) Human Tagged ORF Clone

Product data:

Product Type:	Expression Plasmids
Product Name:	IRF3 (NM_001197124) Human Tagged ORF Clone
Tag:	Myc-DDK
Symbol:	IRF3
Synonyms:	IIAE7
Mammalian Cell Selection:	Neomycin
Vector:	pCMV6-Entry (PS100001)
E. coli Selection:	Kanamycin (25 ug/mL)
ORF Nucleotide Sequence:	>RC231144 representing NM_001197124 Red=Cloning site Blue=ORF Green=Tags(s)

TTTTGTAATACGACTCACTATAGGGCGCCGGGAATTCGTCGACTGGATCCGGTACCGAGGAGATCTGCC
GCC**CGGATCGCC**

ATGGGAACCCAAAGCCACGGATCCTGCCCTGGCTGGTGTGCGAGCTGGACCTGGGGCAACTGGAGGGCG
TGGCCTGGGTGAACAAGAGCCGCACGCGCTTCCGCATCCCTTGAAGCACGGCCTACGGCAGGATGCACA
GCAGGAGGATTCGGAATCTCCAGGCCTGGGCCGAGGCCACTGGTGCATATGTTCCCGGGAGGGATAAG
CCAGACCTGCCAACCTGGAAGAGGAATTCGGCTCTGCCCTCAACCGCAAAGAAGGGTTGCGTTTAGCAG
AGGACCGGAGCAAGGACCCTCACGACCCACATAAAATCTACGAGTTTGTGAAGTCAAGGAGTTGGGGACTT
TTCCAGCCAGACACCTCTCCGGACACCAATGGTGGAGGCACTTCTGATACCCAGGAAGACATTCTG
GATGAGTTACTGGTAACATGGTGTGGCCCACTCCCAGATCCGGGACCCCAAGCCTGGCTGTAGCCC
CTGAGCCCTGCCCTCAGCCCTGCGGAGCCCACTGGACAATCCCACTCCCTTCCAAACCTGGGGCC
CTCTGAGAACCCACTGAAGCGGCTGTTGGTGCCGGGGGAAGATCTGATTACCTTCACGGAAGGAAGCGGA
CGCTCACCACGCTATGCCCTCTGGTTCTGTGTGGGGGAGTCATGGCCCAAGGACCAGCCGTGGACCAAGA
GGCTCGTGATGGTCAAGGTTGTGCCACGTGCCCTCAGGGCCTGGTAGAAATGGCCCGGGTAGGGGGTGC
CTCCTCCCTGGAGAATACTGTGGACCTGCACATTTCCAACAGCCACCCACTCTCCCTCACCTCCGACCAG
TACAAGGCCTACCTGCAGGACTTGGTGGAGGGCATGGATTTCAGGGCCCTGGGGAGAGC

ACGCGTACGCGGGCCGCTCGAGCAGAAACTCATCTCAGAAGAGGATCTGGCAGCAAATGATATCCTGGATT
ACAAGGATGACGACGATAAGGTTTAA



[View online »](#)

Protein Sequence: >RC231144 representing NM_001197124
Red=Cloning site Green=Tags(s)

MGTPKPRILPWLVSQDLGQLEGVAWVNSRTRFRIPWKHGLRQDAQQEDFGIFQAWAEATGAYVPRDK
 PDLPTWKRNFERSALNRKEGLRLAEDRSKDPHDPHKIYEFVNSGVGDFSQPDTSPTDNGGGSTSDTQEDIL
 DELLGNMVLAPLPDPGPPSLAVAPEPCQPPLRSPSLDNPTFPNLGPSENPLKRLLVPGEDLITFTEGSG
 RSPRYALWFCVGESWPQDQPWTKRLVMVKVVP TCLRALVEMARVGGASSENTVDLHISNSHPLSLTSDQ
 YKAYLQDLVEGMDFQGPGES

TRTRPLEQKLISEEDLAANDILDYKDDDDKV

Chromatograms: https://cdn.origene.com/chromatograms/mk8050_f02.zip

Restriction Sites: SgfI-MluI

Cloning Scheme:

Cloning sites used for ORF Shutting:



* The last codon before the Stop codon of the ORF

ACCN: NM_001197124

ORF Size: 900 bp

OTI Disclaimer: The molecular sequence of this clone aligns with the gene accession number as a point of reference only. However, individual transcript sequences of the same gene can differ through naturally occurring variations (e.g. polymorphisms), each with its own valid existence. This clone is substantially in agreement with the reference, but a complete review of all prevailing variants is recommended prior to use. [More info](#)

OTI Annotation: This clone was engineered to express the complete ORF with an expression tag. Expression varies depending on the nature of the gene.

Components: The ORF clone is ion-exchange column purified and shipped in a 2D barcoded Matrix tube containing 10ug of transfection-ready, dried plasmid DNA (reconstitute with 100 ul of water).

Reconstitution Method:

1. Centrifuge at 5,000xg for 5min.
2. Carefully open the tube and add 100ul of sterile water to dissolve the DNA.
3. Close the tube and incubate for 10 minutes at room temperature.
4. Briefly vortex the tube and then do a quick spin (less than 5000xg) to concentrate the liquid at the bottom.
5. Store the suspended plasmid at -20°C. The DNA is stable for at least one year from date of shipping when stored at -20°C.

RefSeq: [NM_001197124.2](#)

RefSeq ORF: 903 bp

Locus ID: 3661

UniProt ID: [Q14653](#)

Cytogenetics: 19q13.33

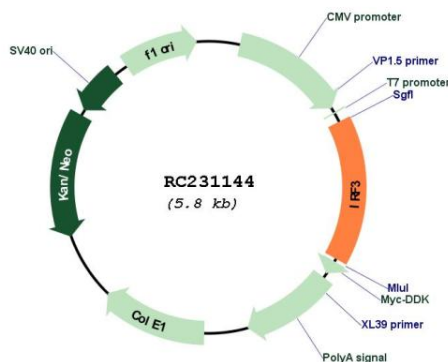
Protein Families: Druggable Genome, Transcription Factors

Protein Pathways: Cytosolic DNA-sensing pathway, RIG-I-like receptor signaling pathway, Toll-like receptor signaling pathway

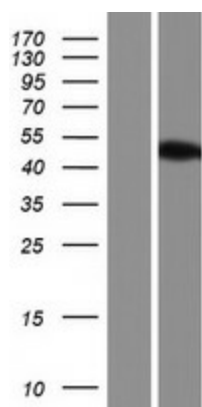
MW: 33.6 kDa

Gene Summary: This gene encodes a member of the interferon regulatory transcription factor (IRF) family. The encoded protein is found in an inactive cytoplasmic form that upon serine/threonine phosphorylation forms a complex with CREBBP. This complex translocates to the nucleus and activates the transcription of interferons alpha and beta, as well as other interferon-induced genes. The protein plays an important role in the innate immune response against DNA and RNA viruses. Mutations in this gene are associated with Encephalopathy, acute, infection-induced, herpes-specific, 7. [provided by RefSeq, Sep 2020]

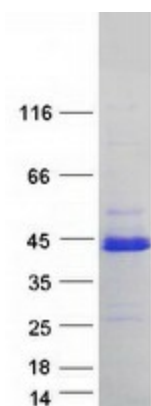
Product images:



Circular map for RC231144



Western blot validation of overexpression lysate (Cat# [LY434143]) using anti-DDK antibody (Cat# [TA50011-100]). Left: Cell lysates from untransfected HEK293T cells; Right: Cell lysates from HEK293T cells transfected with RC231144 using transfection reagent MegaTran 2.0 (Cat# [TT210002]).



Coomassie blue staining of purified IRF3 protein (Cat# [TP331144]). The protein was produced from HEK293T cells transfected with IRF3 cDNA clone (Cat# RC231144) using MegaTran 2.0 (Cat# [TT210002]).