

Product datasheet for **RC231134**

TMEM221 (NM_001190844) Human Tagged ORF Clone

Product data:

Product Type: Expression Plasmids
 Product Name: TMEM221 (NM_001190844) Human Tagged ORF Clone
 Tag: Myc-DDK
 Symbol: TMEM221
 Mammalian Cell Selection: Neomycin
 Vector: pCMV6-Entry (PS100001)
 E. coli Selection: Kanamycin (25 ug/mL)
 ORF Nucleotide Sequence: >RC231134 representing NM_001190844
 Red=Cloning site Blue=ORF Green=Tags(s)

TTTTGTAATACGACTCACTATAGGGCGGCCGGGAATTCGTCGACTGGATCCGGTACCGAGGAGATCTGCC
 GCC**CGATCGCC**

ATGGCCCGTTCTTACGGCGGCCGGGTGCTGGCTGCAATGACCCTGCTGGGCATCGCGGGCCGTGCTGG
 CGGCGCTGGGCGCGCAGCTGCTGTTTCAGCTGCAGGCGGGCCGCGCCGAGCTGCGGGGCTGCGGCCGA
 GGGGCTGGCCAGGAGCTGGGCGCCGGCCCGGGCTGCCAGAGGACGCGGCCGGGACGCTGCTGCCGCTG
 GCCGCCGCGCTGGCCGCGCTGGTGTCTGTGCTGGGTTACCTGCTTGTGCTCGCCGCGCTCTGTGGCC
 ACCTGGGCGCCGAGCTGGCGCGGGGGCTGGCCCCAGGAGTCTGACTGGTTTCTACGACTGCCGCT
 CCTCAGACATGTGGCCCTTGGCCCTTTCTGCTGTGGGATCTCCGCTATTTAGCAGCACTGCCATCTAT
 GCCTTGCTACTTTTCGAGATCGAGACAGGCGCAGCAGCTGCTTCCATCCTCGGCTCGGGCACCCTGGTTC
 TGGTGGCTGTGCTGACCCACACTCTCCTCCGGGCTGCCGGGCTGCCCGCGTGGGCTCCATGAGTTGTC
 CCCGCCATCCTTTGAAGACGACCTCGCCCCCCTGCCAAGTCTCCAAGGCCAGCCCCAGAGCTCAGCCT
 CAGCAGGGTATCCATCGTCGGACCCCTATTCAACCTGTCCAGAGCCTGGGGACCCCTTTGGGTCCATGG
 CCACTGCCACAGCACCTGCAGCCCTGGAGGGAGGCTGGGAGAGCAGCCTGCCTGCATCCAGAATGCACCG
 GACTGTGGCTGGCTGGGGCACTGGGACGGGTTACGCACGAGATGCGTCAATGCTGGGCCACAGA
 CCAGGGAGCATGGGAAGGACTCCACACTGGTG

ACGCGTACGCGGCCGCTCGAGCAGAAACTCATCTCAGAAGAGGATCTGGCAGCAAATGATATCCTGGATT
 ACAAGGATGACGACGATAAGGTTTAA



[View online »](#)

Protein Sequence: >RC231134 representing NM_001190844
Red=Cloning site Green=Tags(s)

MARSYGGRVLAAMTLLGIAAAVLAAALGAQLLFQLQAGRAELRGLRAEGLGQELGAGPGLPEDAAGTLLPL
 AAALAALVLVLGFTCLLLAALCGHLGAELARGPGPRRSDFLYDCRLLRHVALGLFCCGISVYLAALSIY
 ALLLFEIETGAAAASILGSGTLVLVAVLTHLLRAARAARRGLHELSPPSFEDDLARPAEVSKASPRAQP
 QQGIHRRTPYSTCPEPGDPFGSMATATAPAALGGWESSLPASRMHRTL SAGLGHWDGVTHEMRMLGHR
 PGSMGKDSTLV

TRTRPLEQKLISEEDLAANDILDYKDDDDKV

Chromatograms: https://cdn.origene.com/chromatograms/ja1323_b10.zip

Restriction Sites: SgfI-MluI

Cloning Scheme:

Cloning sites used for ORF Shuttling:



ACCN: NM_001190844

ORF Size: 873 bp

OTI Disclaimer: The molecular sequence of this clone aligns with the gene accession number as a point of reference only. However, individual transcript sequences of the same gene can differ through naturally occurring variations (e.g. polymorphisms), each with its own valid existence. This clone is substantially in agreement with the reference, but a complete review of all prevailing variants is recommended prior to use. [More info](#)

OTI Annotation: This clone was engineered to express the complete ORF with an expression tag. Expression varies depending on the nature of the gene.

Components: The ORF clone is ion-exchange column purified and shipped in a 2D barcoded Matrix tube containing 10ug of transfection-ready, dried plasmid DNA (reconstitute with 100 ul of water).

- Reconstitution Method:**
1. Centrifuge at 5,000xg for 5min.
 2. Carefully open the tube and add 100ul of sterile water to dissolve the DNA.
 3. Close the tube and incubate for 10 minutes at room temperature.
 4. Briefly vortex the tube and then do a quick spin (less than 5000xg) to concentrate the liquid at the bottom.
 5. Store the suspended plasmid at -20°C. The DNA is stable for at least one year from date of shipping when stored at -20°C.

RefSeq: [NM_001190844.2](#)

RefSeq ORF: 876 bp

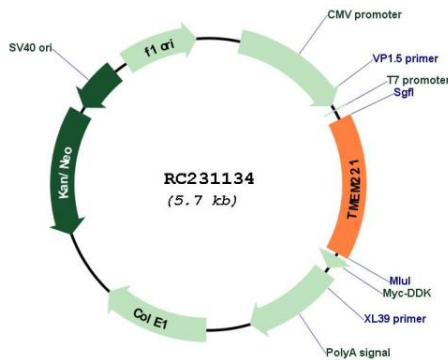
Locus ID: 100130519

UniProt ID: [A6NGB7](#)

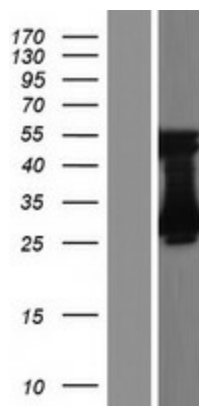
Cytogenetics: 19p13.11

MW: 30.7 kDa

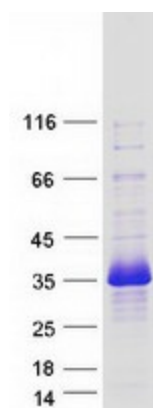
Product images:



Circular map for RC231134



Western blot validation of overexpression lysate (Cat# [LY434133]) using anti-DDK antibody (Cat# [TA50011-100]). Left: Cell lysates from untransfected HEK293T cells; Right: Cell lysates from HEK293T cells transfected with RC231134 using transfection reagent MegaTran 2.0 (Cat# [TT210002]).



Coomassie blue staining of purified TMEM221 protein (Cat# [TP331134]). The protein was produced from HEK293T cells transfected with TMEM221 cDNA clone (Cat# RC231134) using MegaTran 2.0 (Cat# [TT210002]).