

Product datasheet for RC231129

C6orf134 (ATAT1) (NM_001190724) Human Tagged ORF Clone

Product data:

Product Type:	Expression Plasmids
Product Name:	C6orf134 (ATAT1) (NM_001190724) Human Tagged ORF Clone
Tag:	Myc-DDK
Symbol:	C6orf134
Synonyms:	alpha-TAT; alpha-TAT1; C6orf134; MEC17; Nbla00487; TAT
Mammalian Cell Selection:	Neomycin
Vector:	pCMV6-Entry (PS100001)
E. coli Selection:	Kanamycin (25 ug/mL)
ORF Nucleotide Sequence:	>RC231129 representing NM_001190724 Red=Cloning site Blue=ORF Green=Tags(s)

TTTTGTAATACGACTCACTATAGGGCGGCCGGAATTCGTCGACTGGATCCGGTACCGAGGAGATCTGCC
GCC**CGATCGCC**

ATGTGGTTGACCTGGCCTTTCTGCTTCCTCACAATAACCTTAAGGGAGGAGGGAGTGTGCCACCTTGAAA
GTGTTGATCTACAGCAGCAAATTATGACCATTATAGATGAACTGGGCAAGGCTTCTGCCAAGGCCAGAA
TCTTTCCGCTCCTATCACTAGTGCATCAAGGATGCAGAGTAACCGCCATGTTGTTTATATTCTCAAAGAC
AGTTCAGCCCGACCGGCTGGAAAAGGAGCCATTATTGGTTTCATCAAAGTTGGATACAAGAAGCTCTTTG
TACTGGATGATCGTGAGGCTCATAATGAGGTAGAACCCTTTGCATCCTGGACTTTTACATCCATGAGTC
TGTGCAACGCCATGGCCATGGGCGAGAACTCTTCCAGTATATGTTGCAGAAGGAGCGAGTGAACCGCAC
CAACTGGCAATTGACCGACCCTCACAGAAGCTGCTGAAATTCCTGAATAAGCACTACAATCTGGAGACCA
CAGTCCCACAGGTGAACAACTTTGTGATCTTTGAAGGCTTCTTTGCCATCAACATCCTCCAGCAAGGAA
GCTGCCACCAAGAGAGCAGAGGGAGACATCAAGCCATACTCCTCTAGTGACCGAGAATTTCTGAAGGTA
GCTGTGGAGCCTCCTTGCCCCCTAACAGGGCCCTCGCCGCGCCACACCTCCAGCCACCCACCCCCC
GCTCCAGCAGCCTGGGAACTCACCAGAACGAGGTCCCTCCGCCCTTTGTGCCAGAGCAGGAGCTGCT
GCGTTCCTTGCGCCTCTGCCCCACACCCTACCGCCCGCCTTCTGTTGGCTGCTGACCTGGGGCAGC
CCAGCTCAACGTGCTCGACCAGG

ACGCGTACGCGGCCGCTCGAGCAGAAACTCATCTCAGAAGAGGATCTGGCAGCAAATGATATCCTGGATT
ACAAGGATGACGACGATAAGGTTTAA



[View online »](#)

Protein Sequence: >RC231129 representing NM_001190724
Red=Cloning site Green=Tags(s)

MWLTWPFCLTITLREEGVCHLESVDLQQQIMTIIDELGKASAKAQNLSAPITSASRMQSNRHVVYILKD
 SSARPAGKGAIIGFIKVGYKFLVDDREAHNEVEPLCILDYIHEVQRHGHGRELQYMLQKERVEPH
 QLAIDRPSQKLLKFLNKHYNLETTVPQVNNFVIFEGFFAHQHPARKLPPKRAEGDIKPYSSDREFLKV
 AVEPPWPLNRAPRRATPPAHPPPRSSLGNSPERGRLRPFVPEQELLRSLRCLPPHPTARLLLAADPGGS
 PAQRRRTR

TRTRPLEQKLISEEDLAANDILDYKDDDDKV

Chromatograms: https://cdn.origene.com/chromatograms/mk8049_f03.zip

Restriction Sites: SgfI-MluI

Cloning Scheme:



ACCN: NM_001190724

ORF Size: 864 bp

OTI Disclaimer: The molecular sequence of this clone aligns with the gene accession number as a point of reference only. However, individual transcript sequences of the same gene can differ through naturally occurring variations (e.g. polymorphisms), each with its own valid existence. This clone is substantially in agreement with the reference, but a complete review of all prevailing variants is recommended prior to use. [More info](#)

OTI Annotation: This clone was engineered to express the complete ORF with an expression tag. Expression varies depending on the nature of the gene.

Components: The ORF clone is ion-exchange column purified and shipped in a 2D barcoded Matrix tube containing 10ug of transfection-ready, dried plasmid DNA (reconstitute with 100 ul of water).

Reconstitution Method:

1. Centrifuge at 5,000xg for 5min.
2. Carefully open the tube and add 100ul of sterile water to dissolve the DNA.
3. Close the tube and incubate for 10 minutes at room temperature.
4. Briefly vortex the tube and then do a quick spin (less than 5000xg) to concentrate the liquid at the bottom.
5. Store the suspended plasmid at -20°C. The DNA is stable for at least one year from date of shipping when stored at -20°C.

RefSeq: [NM_001190724.3](#)

RefSeq ORF: 867 bp

Locus ID: 79969

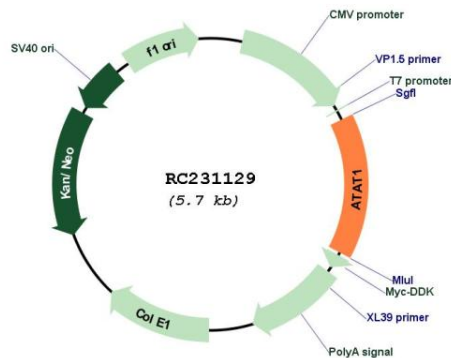
UniProt ID: [Q5SQI0](#)

Cytogenetics: 6p21.33

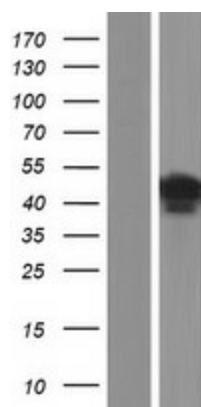
MW: 33.2 kDa

Gene Summary: This gene encodes a protein that localizes to clathrin-coated pits, where it acetylates alpha tubulin on lysine 40. This process may be important in microtubule growth, for instance during chemotaxis and the formation of cilium. Alternative splicing results in multiple transcript variants. [provided by RefSeq, Jan 2016]

Product images:



Circular map for RC231129



Western blot validation of overexpression lysate (Cat# [LY434128]) using anti-DDK antibody (Cat# [TA50011-100]). Left: Cell lysates from untransfected HEK293T cells; Right: Cell lysates from HEK293T cells transfected with RC231129 using transfection reagent MegaTran 2.0 (Cat# [TT210002]).