

## Product datasheet for RC231124

### RNF138 (NM\_001191324) Human Tagged ORF Clone

#### Product data:

Product Type:	Expression Plasmids
Product Name:	RNF138 (NM_001191324) Human Tagged ORF Clone
Tag:	Myc-DDK
Symbol:	RNF138
Synonyms:	hNARF; HSD-4; NARF; STRIN
Mammalian Cell Selection:	Neomycin
Vector:	pCMV6-Entry (PS100001)
E. coli Selection:	Kanamycin (25 ug/mL)
ORF Nucleotide Sequence:	>RC231124 representing NM_001191324 Red=Cloning site Blue=ORF Green=Tags(s)

TTTTGTAATACGACTCACTATAGGGCGGCCGGAATTCGTCGACTGGATCCGGTACCGAGGAGATCTGCC  
GCC**CGATCGCC**

ATGCGATCCCCCTCCCCCTCCGGTTCATGTAGGGAGTCGGGCCCGGGCCGCCACCGTCACCTCGGCC  
GCTGCCGCTGTCGCCATCGCCTTGTTTCCCATCCCCGCCATGGCCGAGGACCTCTCTGCGGCCACGTC  
CTACACCGAAGATGATTTCTACTGCCCGTCTGTCAGGAGGTGCTCAAACGCCCGTGGGACCACGGCC  
TGTCAGCACGTTTTCTGTAGAAAATGTTTCTGACTGCAATGAGGAAAGCGGAGCACATTGTCCCCTAT  
GTCGTGGAATGTGACTAGAAGAGAGAGAGCATGTCCTGAACGGCCTTAGACCTTGAAAATATAATGAG  
GAAGTTTTCTGGTAGCTGCAGATGCTGTGCAAAACAGATTAATTTCTATCGCATGAGACATCATTACAAA  
TCTTGAAGAAGTATCAGGATGAATATGGTGTCTTCTATCATTCCAACTTTTCAGATCTCTCAAGATT  
CAGTAGGGAACAGCAATAGGAGTGAAACATCCACATCTGATAACACAGAACTTACCAAGAGAATACAAG  
TTCTTCTGGTCATCCTACTTTTAAAGTGTCCCCTGTGTCAGAAATCAAATTTTACCAGACAGCGTTTACTG  
GATCACTGTAACAGTAATCACCTATTTTCAGATAGTTTCTGTGACATGTCTATTTGTGTCTCTTCCCT  
GGGAGATCCTAGCCAGATTACCAGAAATTTCTGTAGTCATCTAAATCAGAGACATCAATTTGATTATGG  
AGAATTTGTGAATCTTCAGCTAGATGAAGAAACCAATACCAAATGCTGTTGAAGAATCTTTTCAAGTA  
AACATC

**ACGCGT**ACGCGGCCGCTCGAGCAGAAACTCATCTCAGAAGAGGATCTGGCAGCAAATGATATCCTGGATT  
ACAAGGATGACGACGATAAGGTTTAA



[View online »](#)

**Protein Sequence:** >RC231124 representing NM\_001191324  
Red=Cloning site Green=Tags(s)

MRSPSPLRVHVGSRAPGRHRHLGRCRCRHRLVSPSPAMAEDLSAATSYTEDDFYCPVCQEVLKTPVRTTA  
 CQHVFCRKCFLTAMRESGAHCPLCRGNVTRRERACPERALDLENIMRKFSGSCRCCAKQIKFYMRHHYK  
 SCKKYQDEYGVSSIIIPNFQISQDSVGNRNSETSTSDNTETYQENTSSSGHPTFKCPLCQESNFTQRLL  
 DHCNSNHLFQIVPVTCPICVSLPWGDPSQITRNFVSHLNQRHQFDYGEFVNLQLDEETQYQTAVEESFQV  
 NI

TRTRPLEQKLISEEDLAANDILDYKDDDDKV

**Chromatograms:** [https://cdn.origene.com/chromatograms/mk8049\\_b10.zip](https://cdn.origene.com/chromatograms/mk8049_b10.zip)

**Restriction Sites:** SgfI-MluI

**Cloning Scheme:**



**ACCN:** NM\_001191324

**ORF Size:** 846 bp

**OTI Disclaimer:** The molecular sequence of this clone aligns with the gene accession number as a point of reference only. However, individual transcript sequences of the same gene can differ through naturally occurring variations (e.g. polymorphisms), each with its own valid existence. This clone is substantially in agreement with the reference, but a complete review of all prevailing variants is recommended prior to use. [More info](#)

**OTI Annotation:** This clone was engineered to express the complete ORF with an expression tag. Expression varies depending on the nature of the gene.

**Components:** The ORF clone is ion-exchange column purified and shipped in a 2D barcoded Matrix tube containing 10ug of transfection-ready, dried plasmid DNA (reconstitute with 100 ul of water).

**Reconstitution Method:**

1. Centrifuge at 5,000xg for 5min.
2. Carefully open the tube and add 100ul of sterile water to dissolve the DNA.
3. Close the tube and incubate for 10 minutes at room temperature.
4. Briefly vortex the tube and then do a quick spin (less than 5000xg) to concentrate the liquid at the bottom.
5. Store the suspended plasmid at -20°C. The DNA is stable for at least one year from date of shipping when stored at -20°C.

**RefSeq ORF:** 738 bp

**Locus ID:** 51444

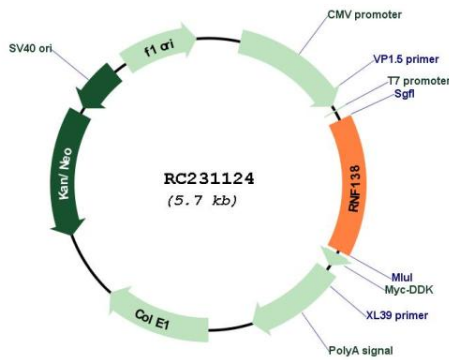
**UniProt ID:** [Q8WVD3](#)

**Cytogenetics:** 18q12.1

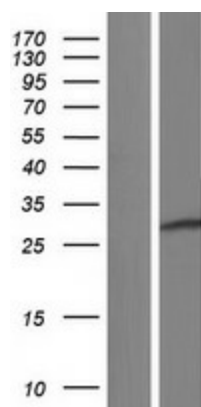
**MW:** 32.36 kDa

**Gene Summary:** The protein encoded by this gene contains a RING finger, a motif present in a variety of functionally distinct proteins and known to be involved in protein-DNA and protein-protein interactions. Alternatively spliced transcript variants encoding distinct isoforms have been observed. [provided by RefSeq, Jul 2008]

**Product images:**



Circular map for RC231124



Western blot validation of overexpression lysate (Cat# [LY434123]) using anti-DDK antibody (Cat# [TA50011-100]). Left: Cell lysates from untransfected HEK293T cells; Right: Cell lysates from HEK293T cells transfected with RC231124 using transfection reagent MegaTran 2.0 (Cat# [TT210002]).