

Product datasheet for RC231117

PRSS55 (NM_001197020) Human Tagged ORF Clone

Product data:

Product Type:	Expression Plasmids
Product Name:	PRSS55 (NM_001197020) Human Tagged ORF Clone
Tag:	Myc-DDK
Symbol:	PRSS55
Synonyms:	CT153; T-SP1; TSP1; UNQ9391
Mammalian Cell Selection:	Neomycin
Vector:	pCMV6-Entry (PS100001)
E. coli Selection:	Kanamycin (25 ug/mL)
ORF Nucleotide Sequence:	>RC231117 representing NM_001197020 Red=Cloning site Blue=ORF Green=Tags(s)

TTTTGTAATACGACTCACTATAGGGCGGCCGGAATTCGTCGACTGGATCCGGTACCGAGGAGATCTGCC
GCC**CGATCGCC**

ATGCTCCTGTTCTCAGTGTGCTGCTCCTGTCCCTGGTCACGGAACTCAGCTCGGTCCACGGACTCCTC
TCCCAGAGGCTGGAGTGGCTATCCTAGGCAGGGCTAGGGGAGCCACCGCCCTCAGCCCCCTCATCCCC
CAGCCCAGTCAGTGAATGTGGTACAGATCTATTTTCGAGGGAAGAACTCGGTATTCCAGAATCACAGGG
GGGATGGAGCGGAGGTGGGTGAGTTCCGTGGCAGGTGAGATTTCAGGCAAGAAGTGAACCTTTCTGTG
GCGGCTCCATCCTCAACAAGTGGTGGATTCTCACTGCGGCTCACTGCTTATATTCCGAGGAGCTGTTTCC
AGAAGAACTGAGTGTCTGCTGGGACCAACGACTTAAGTACGCCATCCATGGAAATAAAGGAGGTCCGCC
AGCATCATTCTTCAAAAAGACTTTAAGAGAGCCAACATGGACAATGACATTGCCTTGCTGCTGCTGGCTT
CGCCCATCAAGCTCGATGACCTGAAGGTGCCATCTGCCTCCCCACGCAGCCCGGCCCTGCCACATGGCG
CGAATGCTGGGTGGCAGGTTGGGGCCAGACCAATGCTGCTGACAAAACTCTGTGAAAACGGATCTGATG
AAAGCGCCAATGGTCATCATGGACTGGGAGGAGTGTCAAAGATGTTCCAAAACCTACCAAAAATATGC
TGTGTGCCGATACAAGAATGAGAGCTATGATGCCTGCAAGCAAAGCTATTTCCCACTTACAAAAGAAAT
GAACACCGGAAGCTCTCAAAAAGCCGCTGGGTCTCACACCTTTCATCTGCAAAAAC

ACGCGTACGCGGCCGCTCGAGCAGAAACTCATCTCAGAAGAGGATCTGGCAGCAAATGATATCCTGGATT
ACAAGGATGACGACGATAAGGTTTAA



[View online »](#)

Protein Sequence: >RC231117 representing NM_001197020
 Red=Cloning site Green=Tags(s)

MLLFVLLLLSLVTGTQLGPRTPLPEAGVAILGRARGAHRPQPPHPPSPVSECGDRSIFEGRTRYSRITG
 GMEAEVGEFPWQVSIQARSEPFCGGSILNKWWILTAAHCLYSEELFPEELSVVLGTNDLTPSMEIKEVA
 SIILHKDFKRANMDNDIALLLLASPIKLDLKVPICLPTQPGPATWRECWVAGWGQTNAADKNSVKTDLM
 KAPMVIDWEECSKMFPKLTKNMLCAGYKNESYDACKQSYFPTLQRMNTGSSQTKPPGSHTFHLQN

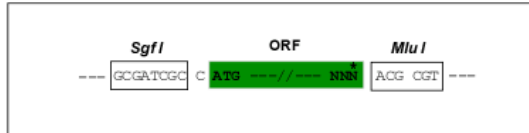
TRTRPLEQKLISEEDLAANDILDYKDDDDKV

Chromatograms: https://cdn.origene.com/chromatograms/ja1264_a07.zip

Restriction Sites: SgfI-MluI

Cloning Scheme:

Cloning sites used for ORF Shuttling:



* The last codon before the Stop codon of the ORF

ACCN: NM_001197020

ORF Size: 828 bp

OTI Disclaimer: The molecular sequence of this clone aligns with the gene accession number as a point of reference only. However, individual transcript sequences of the same gene can differ through naturally occurring variations (e.g. polymorphisms), each with its own valid existence. This clone is substantially in agreement with the reference, but a complete review of all prevailing variants is recommended prior to use. [More info](#)

OTI Annotation: This clone was engineered to express the complete ORF with an expression tag. Expression varies depending on the nature of the gene.

Components: The ORF clone is ion-exchange column purified and shipped in a 2D barcoded Matrix tube containing 10ug of transfection-ready, dried plasmid DNA (reconstitute with 100 ul of water).

Reconstitution Method:

1. Centrifuge at 5,000xg for 5min.
2. Carefully open the tube and add 100ul of sterile water to dissolve the DNA.
3. Close the tube and incubate for 10 minutes at room temperature.
4. Briefly vortex the tube and then do a quick spin (less than 5000xg) to concentrate the liquid at the bottom.
5. Store the suspended plasmid at -20°C. The DNA is stable for at least one year from date of shipping when stored at -20°C.

RefSeq: [NM_001197020.2](#)

RefSeq ORF: 831 bp

Locus ID: 203074

UniProt ID: [Q6UWB4](#)

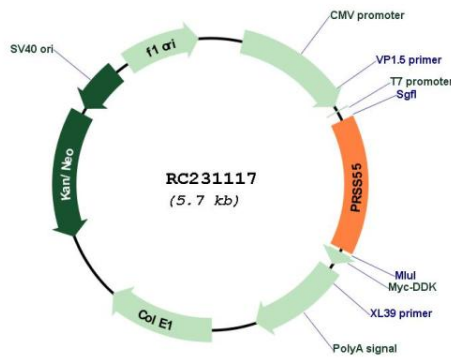
Cytogenetics: 8p23.1

Protein Families: Druggable Genome

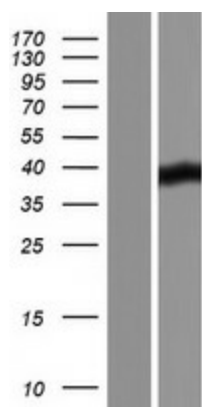
MW: 31 kDa

Gene Summary: This gene encodes a member of a group of membrane-anchored chymotrypsin (S1)-like serine proteases. The encoded protein is primarily expressed in the Leydig and Sertoli cells of the testis and may be involved in male fertility. Alternate splicing results in multiple transcript variants. [provided by RefSeq, Sep 2010]

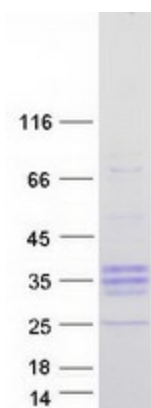
Product images:



Circular map for RC231117



Western blot validation of overexpression lysate (Cat# [LY434116]) using anti-DDK antibody (Cat# [TA50011-100]). Left: Cell lysates from untransfected HEK293T cells; Right: Cell lysates from HEK293T cells transfected with RC231117 using transfection reagent MegaTran 2.0 (Cat# [TT210002]).



Coomassie blue staining of purified PRSS55 protein (Cat# [TP331117]). The protein was produced from HEK293T cells transfected with PRSS55 cDNA clone (Cat# RC231117) using MegaTran 2.0 (Cat# [TT210002]).