

Product datasheet for **RC231101**

Asialoglycoprotein Receptor 1 (ASGR1) (NM_001197216) Human Tagged ORF Clone

Product data:

Product Type:	Expression Plasmids
Product Name:	Asialoglycoprotein Receptor 1 (ASGR1) (NM_001197216) Human Tagged ORF Clone
Tag:	Myc-DDK
Symbol:	Asialoglycoprotein Receptor 1
Synonyms:	ASGPR; ASGPR1; CLEC4H1; HL-1
Mammalian Cell Selection:	Neomycin
Vector:	pCMV6-Entry (PS100001)
E. coli Selection:	Kanamycin (25 ug/mL)
ORF Nucleotide Sequence:	>RC231101 representing NM_001197216 Red=Cloning site Blue=ORF Green=Tags(s)

TTTTGTAATACGACTCACTATAGGGCGGCCGGAATTCGTCGACTGGATCCGGTACCGAGGAGATCTGCC
GCC**CGATCGCC**

ATGACCAAGGAGTATCAAGACCTTCAGCATCTGGACAATGAGGAGAGTGACCACCATCAGCTCAGAAAAG
ACTCCAGCTGCAGGAGGAGCTGCGGGCCTGAGAGAGACGTTACAGCACTTCACAGCGAGCAGGAGGC
CCAGGTCAAGGGCTTGAGCACCCAGGGAGGCAATGTGGGAAGAAAGATGAAGTCGCTAGAGTCCAGCTG
GAGAAACAGCAGAAGGACCTGAGTGAAGATCACTCCAGCCTGCTGCTCCACGTGAAGCAGTTCGTGTCTG
ACCTGCGGAGCCTGAGCTGTGAGATGGCGGCGCTCCAGGCAATGGCTCAGAAAGGACCTGCTGCCCGGT
CAACTGGGTGGAGCACGAGCGCAGCTGCTACTGGTTCTCTCGCTCCGGGAAGGCCTGGGCTGACGCCGAC
AACTACTGCCGGCTGGAGGACGCGCACCTGGTGGTGGTACGTCCTGGGAGGAGCAGAAATTTGTCCAGC
ACCACATAGGCCCTGTGAACACCTGGATGGGCCTCCACGACCAAAACGGGCCCTGGAAGTGGGTGGACGG
GACGGACTACGAGACGGGCTTCAAGAACTGGAGGCCGAGCAGCCGAGCAGTGGTACGGCCACGGGCTC
GGAGGAGGCGAGGACTGTGCCACTTCACCGACGACGGCCGCTGGAACGACGACGCTCTGCCAGAGGCCCT
ACCGCTGGGTCTGCGAGACAGAGCTGGACAAGGCCAGCCAGGAGCCACCTCTCCTT

ACGCGTACGCGGCCGCTCGAGCAGAACTCATCTCAGAAGAGGATCTGGCAGCAAATGATATCCTGGATT
ACAAGGATGACGACGATAAGGTTTAA



[View online »](#)

Protein Sequence: >RC231101 representing NM_001197216

Red=Cloning site Green=Tags(s)

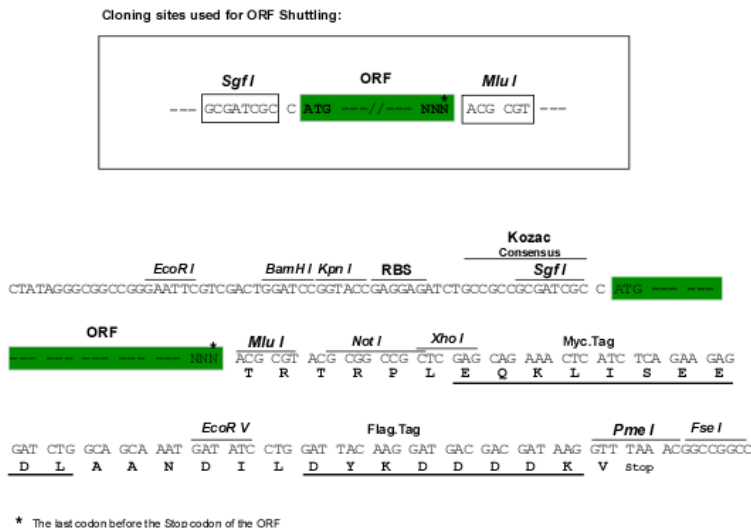
MTKEYQDLQHLNDEESDHHQLRKDSQLQEELRGLRETF SNFTASTEAVKGLSTQGGNVGRKMSLESQLEKQKDLSEDHSSLLLVHKQFVSDLRSLSCQMAALQNGSERTCCPVNWVEHERSCYWF SRSWKAWADADNYCRLEDAHLVVVTSWEEKFVQHHIGPVNTWMGLHDQNGPWKWDGTDYETGFKNWRPEQPDWYGHGLGGGEDCAHFTDDGRWNDDVCQRPYRWVCETELDKASQEPPLL

TRTRPLEQKLISEEDLAANDILDYKDDDDKV

Chromatograms: https://cdn.origene.com/chromatograms/ja1557_f09.zip

Restriction Sites: SgfI-MluI

Cloning Scheme:



ACCN: NM_001197216

ORF Size: 756 bp

OTI Disclaimer: The molecular sequence of this clone aligns with the gene accession number as a point of reference only. However, individual transcript sequences of the same gene can differ through naturally occurring variations (e.g. polymorphisms), each with its own valid existence. This clone is substantially in agreement with the reference, but a complete review of all prevailing variants is recommended prior to use. [More info](#)

OTI Annotation: This clone was engineered to express the complete ORF with an expression tag. Expression varies depending on the nature of the gene.

Components: The ORF clone is ion-exchange column purified and shipped in a 2D barcoded Matrix tube containing 10ug of transfection-ready, dried plasmid DNA (reconstitute with 100 ul of water).

Reconstitution Method:

1. Centrifuge at 5,000xg for 5min.
2. Carefully open the tube and add 100ul of sterile water to dissolve the DNA.
3. Close the tube and incubate for 10 minutes at room temperature.
4. Briefly vortex the tube and then do a quick spin (less than 5000xg) to concentrate the liquid at the bottom.
5. Store the suspended plasmid at -20°C. The DNA is stable for at least one year from date of shipping when stored at -20°C.

RefSeq: [NM_001197216.2](#)

RefSeq ORF: 759 bp

Locus ID: 432

UniProt ID: [P07306](#)

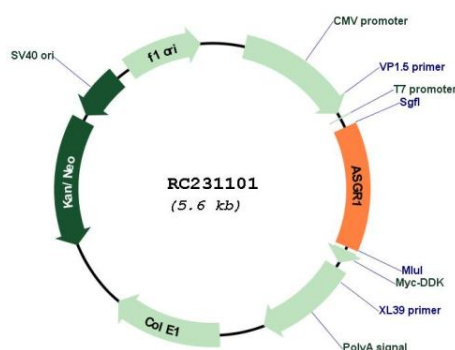
Cytogenetics: 17p13.1

Protein Families: Druggable Genome, Transmembrane

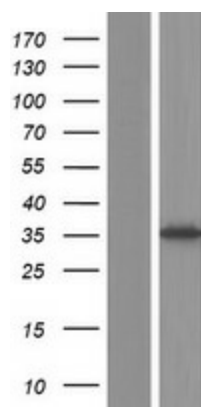
MW: 29.6 kDa

Gene Summary: This gene encodes a subunit of the asialoglycoprotein receptor. This receptor is a transmembrane protein that plays a critical role in serum glycoprotein homeostasis by mediating the endocytosis and lysosomal degradation of glycoproteins with exposed terminal galactose or N-acetylgalactosamine residues. The asialoglycoprotein receptor may facilitate hepatic infection by multiple viruses including hepatitis B, and is also a target for liver-specific drug delivery. The asialoglycoprotein receptor is a hetero-oligomeric protein composed of major and minor subunits, which are encoded by different genes. The protein encoded by this gene is the more abundant major subunit. Alternatively spliced transcript variants encoding multiple isoforms have been observed for this gene. [provided by RefSeq, Jan 2011]

Product images:



Circular map for RC231101



Western blot validation of overexpression lysate (Cat# [LY434100]) using anti-DDK antibody (Cat# [TA50011-100]). Left: Cell lysates from untransfected HEK293T cells; Right: Cell lysates from HEK293T cells transfected with RC231101 using transfection reagent MegaTran 2.0 (Cat# [TT210002]).