

Product datasheet for **RC231095**

C1orf93 (FAM213B) (NM_001195736) Human Tagged ORF Clone

Product data:

Product Type:	Expression Plasmids
Product Name:	C1orf93 (FAM213B) (NM_001195736) Human Tagged ORF Clone
Tag:	Myc-DDK
Symbol:	C1orf93
Synonyms:	C1orf93; FAM213B
Mammalian Cell Selection:	Neomycin
Vector:	pCMV6-Entry (PS100001)
E. coli Selection:	Kanamycin (25 ug/mL)
ORF Nucleotide Sequence:	>RC231095 representing NM_001195736 Red=Cloning site Blue=ORF Green=Tags(s)

TTTTGTAATACGACTCACTATAGGGCGGCCGGGAATTCGTCGACTGGATCCGGTACCGAGGAGATCTGCC
GCC**CGATCGCC**

ATGAGCCGGGAGCGGGGATCCAGGAGCGAGGAGCCGGGAGCGGGGAACAGGGAGTCGGGGAGCCGGGAAC
CAGGGCTGGCAGCGCCGCCATGAGCACGGTGGACCTTGCTCGCGTGGGCGGTGCATCCTGAAGCATGC
GGTGACCAGGGAGGCCGTGGAGCTGCGGAGCCTGTGGCGGGAGCACGCGTGCCTGGTGGCCGGGCTGCGG
CGCTTCGGGTGCGTGGTGTGCCGCTGGATCGCCAGGACCTCAGCAGCCTTGCTGGGCTCCTGGACCAAC
ACGGCGTGCCTGGTGGCGTAGGGCCGAGGCCCTGGGTCTGCAGGAGTTCCTGGACGGCGACTACTT
CGCGGGAGAGCTCTACCTGGATGAGAGCAAGCAGCTTTACAAGGAGCTAGGCTTCAAGCGGCTCTGGACC
CAGGCTTCTCCGGAGTTTGCCAAGCGACCTGGTGTCTTCGCAGGTACAACAGCCTGAGCATCCTCCAG
CAGCTCTGGGAAGCCCGTGCCTGATGTGGCTGCCAAGGCCAAGGCTGTTGGCATCCAGGGGAACCTTGTC
TGGGGACCTGCTGCAGAGCGGAGGGCTGCTGGTGGTCAGCAAAGGTGGTGATAAAGTGCTCCTGCATTTCC
GTCCAGAAGTCCCAGGCGACTACGTCCCCAAGGAGCACATCCTGCAGGTCTGGGCATCTCTGCGGAGG
TCTGTGCCAGCGACCCGCTCAGTGTGACAGAGAGGTG

AG**CGGACCG**ACGCGTACGCGGCCGCTCGAGCAGAACTCATCTCAGAAGAGGATCTGGCAGCAAATGATATCC
TGGATTACAAGGATGACGACGATAAGGTTTAA



[View online »](#)

Protein Sequence: >RC231095 representing NM_001195736
Red=Cloning site Green=Tags(s)

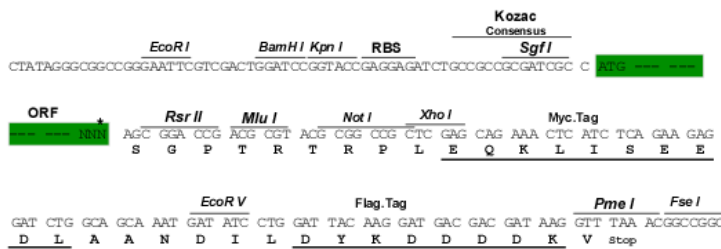
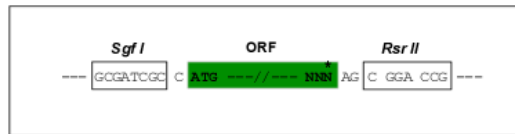
MSRERGRSREEPGAGNRESGSREPGLAAAAMSTVDLARVGACILKHAVTGEAVELRSLWREHACVVAGLR
 RFGCVVCRWIAQDLSSLAGLLDQHGVRVLVGVGPEALGLQEFLDGDYFAGELYLDESKQLYKELGFKRLWT
 QASPEFGQATWCLRRYNSLSILPAALGKPVRDVAAKAKAVGIQGNLSGDLQSGGLLVVSKGGDKVLLHF
 VQKSPGDYVPKEHILQVLGISAEVCASDPPQCDREV

SGPTRRRLEQKLISEEDLAANDILDYKDDDDKV

Restriction Sites: SgfI-RsrII

Cloning Scheme:

Cloning sites used for ORF Shuttling:



* The last codon before the Stop codon of the ORF

ACCN: NM_001195736

ORF Size: 738 bp

OTI Disclaimer: The molecular sequence of this clone aligns with the gene accession number as a point of reference only. However, individual transcript sequences of the same gene can differ through naturally occurring variations (e.g. polymorphisms), each with its own valid existence. This clone is substantially in agreement with the reference, but a complete review of all prevailing variants is recommended prior to use. [More info](#)

OTI Annotation: This clone was engineered to express the complete ORF with an expression tag. Expression varies depending on the nature of the gene.

Components: The ORF clone is ion-exchange column purified and shipped in a 2D barcoded Matrix tube containing 10ug of transfection-ready, dried plasmid DNA (reconstitute with 100 ul of water).

Reconstitution Method:

1. Centrifuge at 5,000xg for 5min.
2. Carefully open the tube and add 100ul of sterile water to dissolve the DNA.
3. Close the tube and incubate for 10 minutes at room temperature.
4. Briefly vortex the tube and then do a quick spin (less than 5000xg) to concentrate the liquid at the bottom.
5. Store the suspended plasmid at -20°C. The DNA is stable for at least one year from date of shipping when stored at -20°C.

RefSeq: [NM_001195736.1](#), [NP_001182665.3](#)

RefSeq ORF: 651 bp

Locus ID: 127281

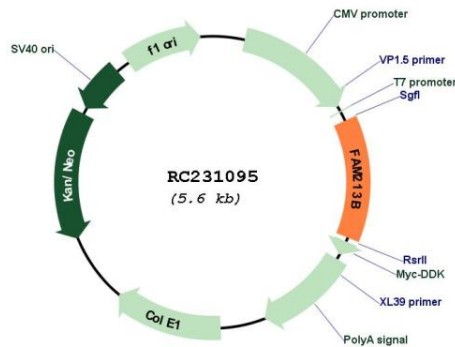
UniProt ID: [Q8TBF2](#)

Cytogenetics: 1p36.32

MW: 26.9 kDa

Gene Summary: Catalyzes the reduction of prostaglandin-ethanolamide H(2) (prostamide H(2)) to prostamide F(2alpha) with NADPH as proton donor. Also able to reduce prostaglandin H(2) to prostaglandin F(2alpha) (By similarity).[UniProtKB/Swiss-Prot Function]

Product images:



Circular map for RC231095