

Product datasheet for **RC231080**

WI2 (NM_001195127) Human Tagged ORF Clone

Product data:

Product Type: Expression Plasmids
 Product Name: WI2 (NM_001195127) Human Tagged ORF Clone
 Tag: Myc-DDK
 Symbol: WI2
 Mammalian Cell Selection: Neomycin
 Vector: pCMV6-Entry (PS100001)
 E. coli Selection: Kanamycin (25 ug/mL)
 ORF Nucleotide Sequence: >RC231080 representing NM_001195127
 Red=Cloning site Blue=ORF Green=Tags(s)

TTTTGTAATACGACTCACTATAGGGCGGCCGGAATTCGTCGACTGGATCCGGTACCGAGGAGATCTGCC
 GCC**CGATCGCC**

ATGTTTGACAGCTCGCAGTATCCCTACAACCTGCTTCAATTACGACGCCGACGACTACCCCGCCGGCAGCT
 CCGACGAAGACAAGAGGCTCACGCGGCCCGCTACAGCTACATCGCCTTGATCGCCATGGCCATTACGCA
 GAGCCCGCGGGGAGGGTGACCTGTCCGGCATCTACGACTTCATCATGCGCAAATTCCTATTACCGC
 GCCAACACGCGCCCTGGCAGAATCCATCCGCCACAACCTGTCCCTCAACAGCTGCTTCGTCGAAGTGC
 CGCGGTCCGAGGGCCACGAGAAGGGCAAAGGCAACTACTGGACGTTCCGCGGGCGGCTGCGAGTCCGTGC
 GGACTTTCGAGAACGGCAACTACCGGCGGCGGCGGCGGCGGCCCAAGCGCAGGGGGCCGAGG
 GGTCCGCGCGGGGGGCGCCAGGGGCGTCCGGTCCGTCCGAGCCGCCCGCGCTCAGGGGCGCCTGG
 CCCCAGACAGCGCTGGCAGGGGCGCCCGGGCGGTGAGCCCCCGCCAGCCCCGCTCCCCGGGGAAGGA
 GCACCCCGGGACCTCAAGTTCAGCATCGACTACATCCTGTCTCCCGAGACCCCTCCCTGGGCTCAAG
 CCGCCCTGCCTCGACAAGAGGGCAGATACCCGCGGCTGGAGAACGTGGGACTCCACTTTTGACAATG

ACGCGTACGCGGCCGCTCGAGCAGAACTCATCTCAGAAGAGGATCTGGCAGCAAATGATATCCTGGATT
 ACAAGGATGACGACGATAAGGTTTAA

Protein Sequence: >RC231080 representing NM_001195127
 Red=Cloning site Green=Tags(s)

MFDSSQYPYNCFNFDADDYPAGSDEDKRLTRPAYSYIALIAMAIQQSPAGRVTLSGIYDFIMRKFYYR
 ANQRAWQNSIRHNLNLNSCFVKVPRSEGHEKGNWTFAGGCESLDLFENGNYRRRRRRRGPKEGPR
 GPRAGGAQGPSGPSEPPAAQGR LAPDSAGEGAPGREPPASPAPPGKEHPRDLKFSIDYILSSDPFPLK
 PPCLAQEGRYPRENLVGLHFWTM

TRTRPLEQKLISEEDLAANDILDYKDDDDKV



Chromatograms: https://cdn.origene.com/chromatograms/mk8108_b12.zip

Restriction Sites: SgfI-MluI

Cloning Scheme:



ACCN: NM_001195127

ORF Size: 699 bp

OTI Disclaimer: The molecular sequence of this clone aligns with the gene accession number as a point of reference only. However, individual transcript sequences of the same gene can differ through naturally occurring variations (e.g. polymorphisms), each with its own valid existence. This clone is substantially in agreement with the reference, but a complete review of all prevailing variants is recommended prior to use. [More info](#)

OTI Annotation: This clone was engineered to express the complete ORF with an expression tag. Expression varies depending on the nature of the gene.

Components: The ORF clone is ion-exchange column purified and shipped in a 2D barcoded Matrix tube containing 10ug of transfection-ready, dried plasmid DNA (reconstitute with 100 ul of water).

Reconstitution Method:

1. Centrifuge at 5,000xg for 5min.
2. Carefully open the tube and add 100ul of sterile water to dissolve the DNA.
3. Close the tube and incubate for 10 minutes at room temperature.
4. Briefly vortex the tube and then do a quick spin (less than 5000xg) to concentrate the liquid at the bottom.
5. Store the suspended plasmid at -20°C. The DNA is stable for at least one year from date of shipping when stored at -20°C.

RefSeq: [NM_001195127.1](#), [NP_001182056.1](#)

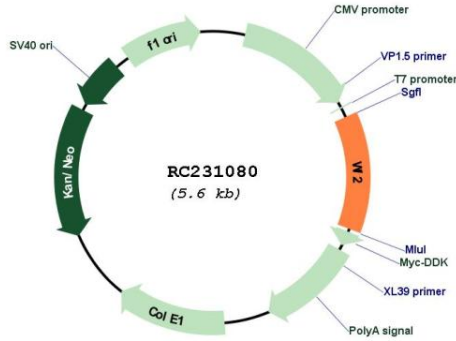
RefSeq ORF: 702 bp

Locus ID: 100288524

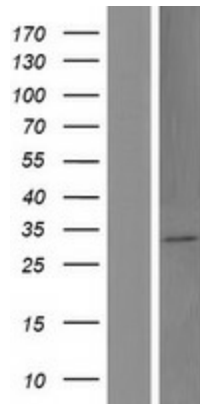
Cytogenetics: 7p22.3

MW: 26.4 kDa

Product images:



Circular map for RC231080



Western blot validation of overexpression lysate (Cat# [LY434079]) using anti-DDK antibody (Cat# [TA50011-100]). Left: Cell lysates from untransfected HEK293T cells; Right: Cell lysates from HEK293T cells transfected with RC231080 using transfection reagent MegaTran 2.0 (Cat# [TT210002]).