

## Product datasheet for **RC231071**

### **C1orf93 (FAM213B) (NM\_001195737) Human Tagged ORF Clone**

#### Product data:

Product Type:	Expression Plasmids
Product Name:	C1orf93 (FAM213B) (NM_001195737) Human Tagged ORF Clone
Tag:	Myc-DDK
Symbol:	C1orf93
Synonyms:	C1orf93; FAM213B
Mammalian Cell Selection:	Neomycin
Vector:	pCMV6-Entry (PS100001)
E. coli Selection:	Kanamycin (25 ug/mL)
ORF Nucleotide Sequence:	>RC231071 representing NM_001195737 Red=Cloning site Blue=ORF Green=Tags(s)

TTTTGTAATACGACTCACTATAGGGCGGCCGGAATTCGTCGACTGGATCCGGTACCGAGGAGATCTGCC  
GCC**CGATCGCC**

ATGAGCCGGGAGCGGGGATCCAGGAGCGAGGAGCCGGGAGCGGGGAACAGGGAGTCGGGGAGCCGGGAAC  
CAGGGCTGGCAGCGGCCCATGAGCACGGTGGACCTTGCTCGCGTGGGCGGTGCATCCTGAAGCATGC  
GGTGACCGGGAGGCCGTGGAGCTGCGGAGCCTGTGGCGGGAGCACGCGTGCCTGGTGGCCGGGCTGCGG  
CGCTTCGGGTGCGTGGTGTGCCGCTGGATCGCCAGGACCTCAGCAGCCTTGCTGGGCTCCTGGACCAAC  
ACGGCGTGCCTGGTGGCGTAGGGCCGAGGCCCTGGGTCTGCAGGAGTTCCTGGACGGCAGTACTT  
CGCGGGAGAGCTTACCTGGATGAGAGCAAGCAGCTTTACAAGGAGCTAGGCTTCAAGCGGTACAACAGC  
CTGAGCATCCTCCAGCAGCTCTGGGAAGCCCGTGCCTGATGTGGCTGCCAAGGCTGTACCCACTCCTG  
ACAGGCCAAGGCTGTTGGCATCCAGGGAACTTGTCTGGGGACCTGCTGCAGAGCGGAGGGCTGCTGGT  
GTCAGCAAAGAAGTCCCCAGGCGACTACGTCCCAAGGAGCACATCCTGCAGGTCTGGGCATCTCTGCC  
GAGGTCTGTGCCAGCGACCCGCCTCAGTGTGACAGAGAGGTG

AG**CGGACCG**ACGCGTACGCGGCCGCTCGAGCAGAACTCATCTCAGAAGAGGATCTGGCAGCAAATGATATCC  
TGGATTACAAGGATGACGACGATAAGGTTTAA



[View online »](#)

**Protein Sequence:** >RC231071 representing NM\_001195737  
 Red=Cloning site Green=Tags(s)

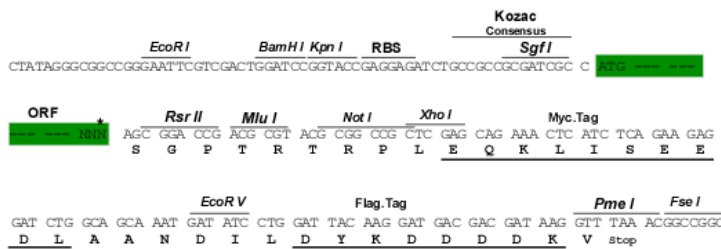
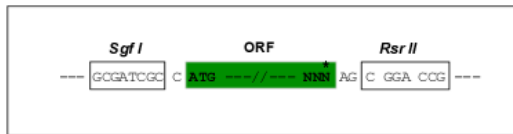
MSRERGRSSEEPGAGNRESGSREPLAAAAAMSTVDLARVGACILKHAVTGEAVELRSLWREHACVVAGLR  
 RFGCVVCRWIAQDLSSLAGLLDQHGVRVLVGVGPEALGLQEFLDGDYFAGELYLDESKQLYKELGFKRYNS  
 LSILPAALGKPVVDVAAKAVPTPDRPRLLASRGTCGLGCCRAEGCWSAKKSPGDYVVPKEHILQVLGISA  
 EVCASDPPQCDREV

SGPTRRRLEQKLISEEDLAANDILDYKDDDDKV

**Restriction Sites:** SgfI-RsrII

**Cloning Scheme:**

Cloning sites used for ORF Shuttling:



\* The last codon before the Stop codon of the ORF

**ACCN:** NM\_001195737

**ORF Size:** 672 bp

**OTI Disclaimer:** The molecular sequence of this clone aligns with the gene accession number as a point of reference only. However, individual transcript sequences of the same gene can differ through naturally occurring variations (e.g. polymorphisms), each with its own valid existence. This clone is substantially in agreement with the reference, but a complete review of all prevailing variants is recommended prior to use. [More info](#)

**OTI Annotation:** This clone was engineered to express the complete ORF with an expression tag. Expression varies depending on the nature of the gene.

**Components:** The ORF clone is ion-exchange column purified and shipped in a 2D barcoded Matrix tube containing 10ug of transfection-ready, dried plasmid DNA (reconstitute with 100 ul of water).

**Reconstitution Method:**

1. Centrifuge at 5,000xg for 5min.
2. Carefully open the tube and add 100ul of sterile water to dissolve the DNA.
3. Close the tube and incubate for 10 minutes at room temperature.
4. Briefly vortex the tube and then do a quick spin (less than 5000xg) to concentrate the liquid at the bottom.
5. Store the suspended plasmid at -20°C. The DNA is stable for at least one year from date of shipping when stored at -20°C.

**RefSeq:** [NM\\_001195737.1](#), [NP\\_001182666.3](#)

**RefSeq ORF:** 585 bp

**Locus ID:** 127281

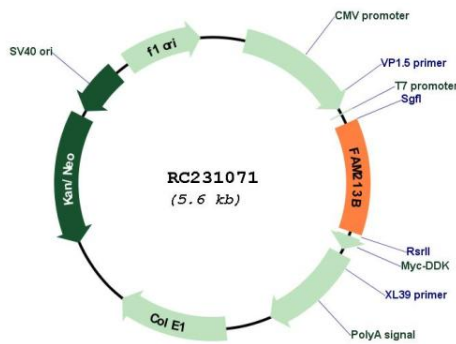
**UniProt ID:** [Q8TBF2](#)

**Cytogenetics:** 1p36.32

**MW:** 24.6 kDa

**Gene Summary:** Catalyzes the reduction of prostaglandin-ethanolamide H(2) (prostamide H(2)) to prostamide F(2alpha) with NADPH as proton donor. Also able to reduce prostaglandin H(2) to prostaglandin F(2alpha) (By similarity).[UniProtKB/Swiss-Prot Function]

**Product images:**



Circular map for RC231071