

## Product datasheet for **RC231025**

### REG (NM\_001190726) Human Tagged ORF Clone

#### Product data:

**Product Type:** Expression Plasmids  
**Product Name:** REG (NM\_001190726) Human Tagged ORF Clone  
**Tag:** Myc-DDK  
**Symbol:** REG  
**Mammalian Cell Selection:** Neomycin  
**Vector:** pCMV6-Entry (PS100001)  
**E. coli Selection:** Kanamycin (25 ug/mL)  
**ORF Nucleotide Sequence:** >RC231025 representing NM\_001190726  
 Red=Cloning site Blue=ORF Green=Tags(s)

TTTTGTAATACGACTCACTATAGGGCGGCCGGAATTCGTCGACTGGATCCGGTACCGAGGAGATCTGCC  
 GCC**CGATCGCC**

ATGGCTAAAAGTGC GGAGGTCAA CTGGCAATATTTGGGAGAGCAGGCGTGGCAAGTCAGAATCAACCT  
 ACCGACACCAAGCAACCATCGATGATGAAGTTGTTCCATGGAGATACTAGACACTGCTGGTCAGGAAGA  
 TACCATTAGAGGGAGGGGCACATGCGATGGGGGAAGGCTTTGTGCTGGTCTACGACATTACTGACCGA  
 GGAAGTTTTGAGGAAGTGTGCCACTTAAGAACATCCTAGATGAGATCAAAAAGCCCAAGAATGTGACTC  
 TCATCTGGTTGGAACAAAGCTGACTTGACCCTCCAGCAGGTTAGCACAGAAGGAGAGAGAAGT  
 GGCCACAGAATTGGCTTGTGCTTTTTACGAGTGTCTGCCTGCACTGGAGAAGGGAACATCACAGAGATA  
 TTCTATGAATTGTGTCGAGAGGTGCGTCGCCGGAGGATGGTGCAGGGCAAGACGAGGCGACGCAGCTCCA  
 CCACGCATGTCAAGCAAGCCATTAACAAGATGCTACCAAAATCAGTAGT

**ACGCGT**ACGCGGCCGCTCGAGCAGAACTCATCTCAGAAGAGGATCTGGCAGCAATGATATCCTGGATT  
 ACAAGGATGACGACGATAAGGTTTAA

**Protein Sequence:** >RC231025 representing NM\_001190726  
 Red=Cloning site Green=Tags(s)

MAKSAEVKLAIFGRAGVGKSESTYRQATIDDEVVSMEILD TAGQEDTIQREGHMRWGEFVLYVDITDR  
 GSFEEVLPKKNILDEIKKPKNVTLLVGNKADLDSRQVSTEEGEKLATELACAFYECSACTGEGNITEI  
 FYELCREVRRRMVQKTRRRSSTTHVKQAINKMLTKISS

**TRTRPLEQKLI**SEEDLAANDILDYKDDDDKV

**Chromatograms:** [https://cdn.origene.com/chromatograms/ja1477\\_e07.zip](https://cdn.origene.com/chromatograms/ja1477_e07.zip)

**Restriction Sites:** SgfI-MluI



[View online >](#)

**Cloning Scheme:**


**ACCN:** NM\_001190726

**ORF Size:** 540 bp

**OTI Disclaimer:** The molecular sequence of this clone aligns with the gene accession number as a point of reference only. However, individual transcript sequences of the same gene can differ through naturally occurring variations (e.g. polymorphisms), each with its own valid existence. This clone is substantially in agreement with the reference, but a complete review of all prevailing variants is recommended prior to use. [More info](#)

**OTI Annotation:** This clone was engineered to express the complete ORF with an expression tag. Expression varies depending on the nature of the gene.

**Components:** The ORF clone is ion-exchange column purified and shipped in a 2D barcoded Matrix tube containing 10ug of transfection-ready, dried plasmid DNA (reconstitute with 100 ul of water).

**Reconstitution Method:**

1. Centrifuge at 5,000xg for 5min.
2. Carefully open the tube and add 100ul of sterile water to dissolve the DNA.
3. Close the tube and incubate for 10 minutes at room temperature.
4. Briefly vortex the tube and then do a quick spin (less than 5000xg) to concentrate the liquid at the bottom.
5. Store the suspended plasmid at -20°C. The DNA is stable for at least one year from date of shipping when stored at -20°C.

**RefSeq:** [NM\\_001190726.2](#)

**RefSeq ORF:** 543 bp

**Locus ID:** 85004

**UniProt ID:** [Q96A58](#)

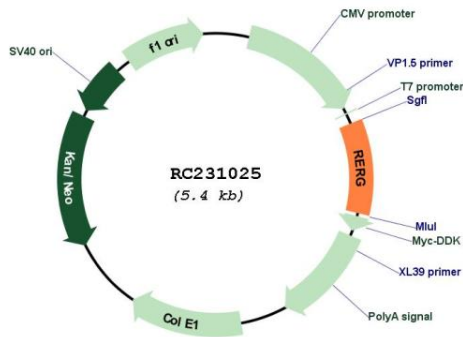
**Cytogenetics:** 12p12.3

**Protein Families:** Druggable Genome

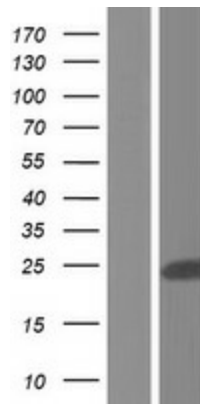
MW: 20.7 kDa

Gene Summary: RERG, a member of the RAS superfamily of GTPases, inhibits cell proliferation and tumor formation (Finlin et al., 2001 [PubMed 11533059]).[supplied by OMIM, Mar 2009]

**Product images:**



Circular map for RC231025



Western blot validation of overexpression lysate (Cat# [LY434024]) using anti-DDK antibody (Cat# [TA50011-100]). Left: Cell lysates from untransfected HEK293T cells; Right: Cell lysates from HEK293T cells transfected with RC231025 using transfection reagent MegaTran 2.0 (Cat# [TT210002]).