

Product datasheet for **RC231024**

EPPIN-WFDC6 (NM_001198986) Human Tagged ORF Clone

Product data:

Product Type: Expression Plasmids
Product Name: EPPIN-WFDC6 (NM_001198986) Human Tagged ORF Clone
Tag: Myc-DDK
Symbol: EPPIN-WFDC6
Synonyms: SPINLW1-WFDC6
Mammalian Cell Selection: Neomycin
Vector: pCMV6-Entry (PS100001)
E. coli Selection: Kanamycin (25 ug/mL)
ORF Nucleotide Sequence: >RC231024 representing NM_001198986
Red=Cloning site Blue=ORF Green=Tags(s)

TTTTGTAATACGACTCACTATAGGGCGGCCGGAATTCGTCGACTGGATCCGGTACCGAGGAGATCTGCC
GCC**CGATCGCC**

ATGGGATCTTCTGGACTTTTGAGCCTCTGGTGTATTGTCCTCTTAGCGAATGTCCAGGGACCTGGTC
TGACTGATTGGTTATTTCCAGGAGATGTCCAAAATCAGAGAAGAATGTGAATCCAAGAAAGGGATGT
GTGTACAAAGGACAGACAATGCCAGGACAACAAGAAGTGTGTCTTCAGCTGCGGAAAAAATGTTTA
GATCTCAAACAAGATGTATGCGAAATGCCAAAAGAACTGGCCCTGCCTGGCTTATTTCTTCATTGGT
GGTATGACAAGAAAGATAAATACTTGCTCCATGTTGTCTATGGTGGCTGCCAGGAAACAATAACA
CTTCCAATCCAAGCCAAGTGCCTGAACACCTGCAAGAATAAACAGCCGTGTCCAAAATCAAAGTGG
AATGCAAGTGGAAAGAAATAGACCAGTGTACCAAAACCCAGAGATTGCCAGAAAACATGAAGTGT
GCCCGTTCA
GCCGTGGAAGAAATGTTTAGACTTCAGAAAGGCCTCTGTCTACA

ACGCGTACGCGGCCGCTCGAGCAGAACTCATCTCAGAAGAGGATCTGGCAGCAAATGATATCCTGGATT
ACAAGGATGACGACGATAAGGTTTAA

Protein Sequence: >RC231024 representing NM_001198986
Red=Cloning site Green=Tags(s)

MGSSGLLSLLVLFVLLANVQGPGLTDWLFPRRCPKIREEECFQERDVCTKDRQCQDNKKCCVFSCGKKCL
DLKQDVCEMPKETGPCLAYFLHWWYDKDNTCSMFVYGGCQGNNNFQSKANCLNTCKNKQPCPKIKVE
EVEEIDQCTKPRDCPENMKCCPF SRGKKCLDFRKASLST

TRTRPLEQKLISEEDLAANDILDYKDDDDKV

Chromatograms: https://cdn.origene.com/chromatograms/ja1250_g04.zip

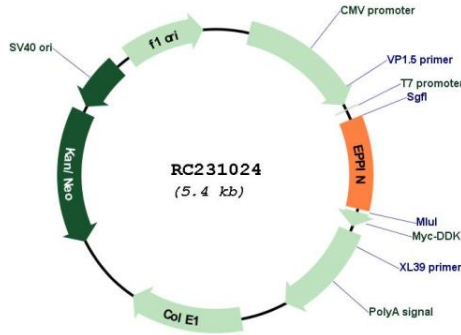


[View online »](#)

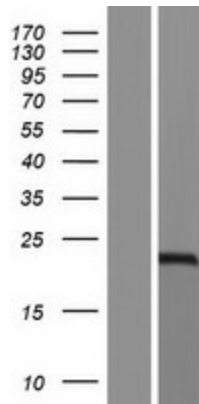
MW: 20.9 kDa

Gene Summary: This locus represents naturally occurring read-through transcription between the neighboring SPINLW1 (serine peptidase inhibitor-like, with Kunitz and WAP domains 1) and WFDC6 (WAP four-disulfide core domain 6) genes. The read-through transcript encodes a fusion protein that shares sequence identity with the products of each individual gene. [provided by RefSeq, Nov 2010]

Product images:



Circular map for RC231024



Western blot validation of overexpression lysate (Cat# [LY434023]) using anti-DDK antibody (Cat# [TA50011-100]). Left: Cell lysates from untransfected HEK293T cells; Right: Cell lysates from HEK293T cells transfected with RC231024 using transfection reagent MegaTran 2.0 (Cat# [TT210002]).