

Product datasheet for RC231022

RBJ (DNAJC27) (NM_001198559) Human Tagged ORF Clone

Product data:

Product Type: Expression Plasmids
Product Name: RBJ (DNAJC27) (NM_001198559) Human Tagged ORF Clone
Tag: Myc-DDK
Symbol: RBJ
Synonyms: RabJ5; RBJ
Mammalian Cell Selection: Neomycin
Vector: pCMV6-Entry (PS100001)
E. coli Selection: Kanamycin (25 ug/mL)
ORF Nucleotide Sequence: >RC231022 representing NM_001198559
Red=Cloning site Blue=ORF Green=Tags(s)

TTTTGTAATACGACTCACTATAGGGCGGCCGGAATTCGTCGACTGGATCCGGTACCGAGGAGATCTGCC
GCC**CGATCGCC**

ATGGAGGCCAACATGCCGAAGCGGAAGGAGCCCGCAGGTCTCTCCGCATCAAAGTCATCTCCATGGGCA
ACGCCGAAGTGGGAAAAGCTGTATTATAAAGCGATACTGTGAGAAAAGATTCTGTCTAAATACCTGGC
AACAAATGGAATTGACTATGGAGTCACAAAGGTACACGTCAGAGACAGAGAAATCAAAGTTAACATCTTT
GATATGGCTGGACATCCCTTCTCTATGAGGTTGAAATGAGTTTTACAAGGACACACAGGTTGTGATAC
TGGTCTATGATGTTGGGCAGAAAGACTCCTTTGACGCCCTTGATGCGTGGCTGGCAGAAATGAAGCAAGA
GCTTGGACCTCATGGAAACATGGAAAATATTATATTTGTAGTTTGTGCCAACAGATTGATTGTACCAAA
CATCGCTGTGATGAAAGTGAAGGACGCTTTGGGCTGAAAGCAAAGGTTCTCTGACTTTGAAACTT
CAGCACAAACTGGAGAAGGCATTAATGAGATGTTCCAGGGA

ACGCGTACGCGGCCGCTCGAGCAGAAACTCATCTCAGAAGAGGATCTGGCAGCAAATGATATCCTGGATT
ACAAGGATGACGACGATAAGGTTTAA

Protein Sequence: >RC231022 representing NM_001198559
Red=Cloning site Green=Tags(s)
MEANMPKRKEPGRSLRIKVISMGNAEVGKSCIIKRYCEKRFVSKYLATIGIDYGVTKVHVRDREIKVNI
DMAGHPFFYEVRNEFYKDTQGVILVYDVGQKDSFDALDAWLAEMKQELGPHGNMENIIFVVCANKIDCTK
HRCVDESEGRLEWESKGFYFETSAQTGEGINEMFQG

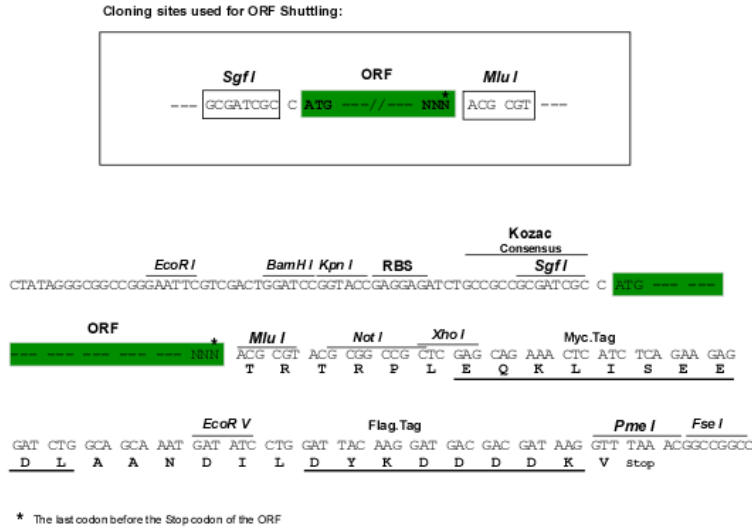
TRTRPLEQKLISEEDLAANDILDYKDDDDKV

Chromatograms: https://cdn.origene.com/chromatograms/ja1461_g11.zip



Restriction Sites: SgfI-MluI

Cloning Scheme:



ACCN: NM_001198559

ORF Size: 531 bp

OTI Disclaimer: The molecular sequence of this clone aligns with the gene accession number as a point of reference only. However, individual transcript sequences of the same gene can differ through naturally occurring variations (e.g. polymorphisms), each with its own valid existence. This clone is substantially in agreement with the reference, but a complete review of all prevailing variants is recommended prior to use. [More info](#)

OTI Annotation: This clone was engineered to express the complete ORF with an expression tag. Expression varies depending on the nature of the gene.

Components: The ORF clone is ion-exchange column purified and shipped in a 2D barcoded Matrix tube containing 10ug of transfection-ready, dried plasmid DNA (reconstitute with 100 ul of water).

Reconstitution Method:

1. Centrifuge at 5,000xg for 5min.
2. Carefully open the tube and add 100ul of sterile water to dissolve the DNA.
3. Close the tube and incubate for 10 minutes at room temperature.
4. Briefly vortex the tube and then do a quick spin (less than 5000xg) to concentrate the liquid at the bottom.
5. Store the suspended plasmid at -20°C. The DNA is stable for at least one year from date of shipping when stored at -20°C.

RefSeq: [NM_001198559.1](#), [NP_001185488.1](#)

RefSeq ORF: 534 bp

Locus ID: 51277

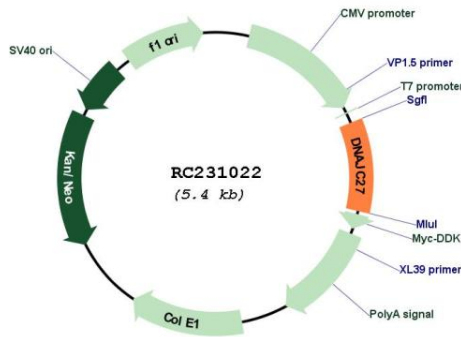
UniProt ID: [Q9NZQ0](#)

Cytogenetics: 2p23.3

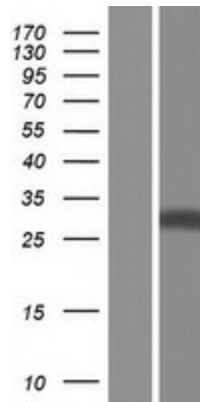
MW: 20.7 kDa

Gene Summary: GTPase which can activate the MEK/ERK pathway and induce cell transformation when overexpressed. May act as a nuclear scaffold for MAPK1, probably by association with MAPK1 nuclear export signal leading to enhanced ERK1/ERK2 signaling.[UniProtKB/Swiss-Prot Function]

Product images:



Circular map for RC231022



Western blot validation of overexpression lysate (Cat# [LY434021]) using anti-DDK antibody (Cat# [TA50011-100]). Left: Cell lysates from untransfected HEK293T cells; Right: Cell lysates from HEK293T cells transfected with RC231022 using transfection reagent MegaTran 2.0 (Cat# [TT210002]).