

Product datasheet for **RC231017**

TMEM238 (NM_001190764) Human Tagged ORF Clone

Product data:

Product Type: Expression Plasmids
Product Name: TMEM238 (NM_001190764) Human Tagged ORF Clone
Tag: Myc-DDK
Symbol: TMEM238
Mammalian Cell Selection: Neomycin
Vector: pCMV6-Entry (PS100001)
E. coli Selection: Kanamycin (25 ug/mL)
ORF Nucleotide Sequence: >RC231017 representing NM_001190764
Red=Cloning site Blue=ORF Green=Tags(s)

TTTTGTAATACGACTCACTATAGGGCGGCCGGAATTCGTCGACTGGATCCGGTACCGAGGAGATCTGCC
GCC**CGATCGCC**

ATGGCGGCGCGCCAGCGGTGTGCGCCTCGCAGGGGAGCCCGCGGGTGACCGTCCGCGCCGGCGGCCG
CGCCAGCACCCGCGCGCCGGCCTGGGCGCTGCCGATGGCGCTGCTGCTGGCCGTGGCGCTGGATGTGGC
GGGCATGGCGCGCTGCTGACCGCGCTGTTGCGCAGCTGCAGGTGCGCGGCCGCGACTTCGGGGACCTG
CTCATCTACTCGGGCGCGCTGCTGGTGTTCCTGAGCCTGCTGGGCTGGATCCTCTGGTACACCGGCAACA
TCGAGATCTCGCGCCAGGAGCTGGAGCGGAGTACGGCCTGCGGCCCTCGCGCTCGCCCGCTGGCGCG
CAAGCTCTCCCGCGCTGGTGGCGCCCGCGCCGCGGGCCAGCGCCCGCGCCCGCTCCCGGAGAGCG
CGCCGAGCCGCCCGCGCCCGCCCGCGCCCGCGCGCTCCCGCGCGTGGCGCTGCAGCTCGCCACGC
TCGAGGCCGGGCCGGGCGCGGGCGCGGGCAGCGAG

ACGCGTACGCGGCCGCTCGAGCAGAACTCATCTCAGAAGAGGATCTGGCAGCAAATGATATCCTGGATT
ACAAGGATGACGACGATAAGGTTTAA

Protein Sequence: >RC231017 representing NM_001190764
Red=Cloning site Green=Tags(s)

MAAAPVCASQGSPPGAPSAPAAAPAPAAGLGRCRMALLLAVALDVAGMAALLTGVF AQLQVRGRDFGDL
LIYSGALLVFLSLLGWILWYTGNIETSRQELERDYGLRPSALARLARKLSRRWSAPAAAGQRPAPGSRRRA
RRAARAPPPPAAGSRRVRLQLATLEAGPGAAGAGSE

TRTRPLEQKLISEEDLAANDILDYKDDDDKV

Chromatograms: https://cdn.origene.com/chromatograms/ja1292_d11.zip

Restriction Sites: SgfI-MluI



View online »

Cloning Scheme:



ACCN: NM_001190764

ORF Size: 528 bp

OTI Disclaimer: The molecular sequence of this clone aligns with the gene accession number as a point of reference only. However, individual transcript sequences of the same gene can differ through naturally occurring variations (e.g. polymorphisms), each with its own valid existence. This clone is substantially in agreement with the reference, but a complete review of all prevailing variants is recommended prior to use. [More info](#)

OTI Annotation: This clone was engineered to express the complete ORF with an expression tag. Expression varies depending on the nature of the gene.

Components: The ORF clone is ion-exchange column purified and shipped in a 2D barcoded Matrix tube containing 10ug of transfection-ready, dried plasmid DNA (reconstitute with 100 ul of water).

Reconstitution Method:

1. Centrifuge at 5,000xg for 5min.
2. Carefully open the tube and add 100ul of sterile water to dissolve the DNA.
3. Close the tube and incubate for 10 minutes at room temperature.
4. Briefly vortex the tube and then do a quick spin (less than 5000xg) to concentrate the liquid at the bottom.
5. Store the suspended plasmid at -20°C. The DNA is stable for at least one year from date of shipping when stored at -20°C.

Note: Plasmids are not sterile. For experiments where strict sterility is required, filtration with 0.22um filter is required.

RefSeq: NM_001190764.2

RefSeq ORF: 531 bp

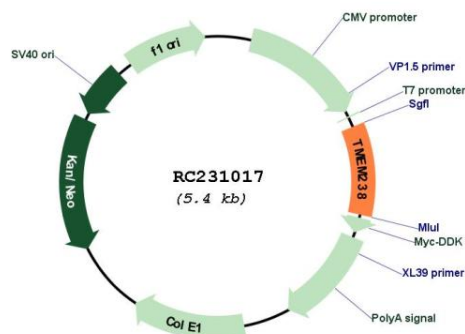
Locus ID: 388564

UniProt ID: [C9J198](#)

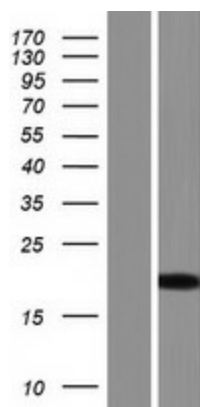
Cytogenetics: 19q13.42

MW: 18.5 kDa

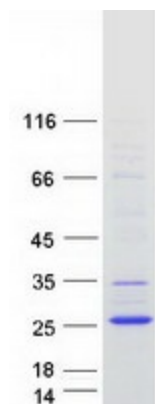
Product images:



Circular map for RC231017



Western blot validation of overexpression lysate (Cat# [LY434016]) using anti-DDK antibody (Cat# [TA50011-100]). Left: Cell lysates from untransfected HEK293T cells; Right: Cell lysates from HEK293T cells transfected with RC231017 using transfection reagent MegaTran 2.0 (Cat# [TT210002]).



Coomassie blue staining of purified TMEM238 protein (Cat# [TP331017]). The protein was produced from HEK293T cells transfected with TMEM238 cDNA clone (Cat# RC231017) using MegaTran 2.0 (Cat# [TT210002]).