

## Product datasheet for **RC231015**

### DCL 1 (CD302) (NM\_001198763) Human Tagged ORF Clone

#### Product data:

**Product Type:** Expression Plasmids  
**Product Name:** DCL 1 (CD302) (NM\_001198763) Human Tagged ORF Clone  
**Tag:** Myc-DDK  
**Symbol:** DCL 1  
**Synonyms:** BIMLEC; CLEC13A; DCL-1; DCL1  
**Mammalian Cell Selection:** Neomycin  
**Vector:** pCMV6-Entry (PS100001)  
**E. coli Selection:** Kanamycin (25 ug/mL)  
**ORF Nucleotide Sequence:** >RC231015 representing NM\_001198763  
Red=Cloning site Blue=ORF Green=Tags(s)

TTTTGTAATACGACTCACTATAGGGCGGCCGGAATTCGTCGACTGGATCCGGTACCGAGGAGATCTGCC  
GCC**CGGATCGCC**

ATGCTCCGGGCCGCGCTGCCCGCTCCTGCTGCCGTTGCTGGCCCTCGCCGCTGCTGCCGTCGGGACT  
GTCCTTCATCTACTTGGATTGAGTTCCAAGACAGTTGTTACATTTTTCTCCAAGAAGCCATCAAAGTAGA  
AAGCATAGAGGATGTCAGAAATCAGTGTACTGACCATGGAGCGGACATGATAAGCATAACATAATGAAGAA  
GAAAATGCTTTTATACTGGATACTTTGAAAAGCAATGAAAAGGCCAGATGATATCCTACTAGGCATGT  
TTTATGACACAGATGTCCATACAAAAGGAAATATTTATCAGATAACCACATTTTAAATATCAGCATTGGT  
GATTGCTAGCACGTAATTTTGACAGTTTTGGGAGCAATCATTTGGTTCCTGTACAAAAACATTCTGAT  
TCTCGTTTACCACAGTTTTTCAACCGCACCCCAATCACCTTATAATGAAGACTGTGTTTTGGTAGTTG  
GAGAAGAAAATGAATATCCTGTTCAATTTGAC

**ACGCGT**ACGCGGCCGCTCGAGCAGAACTCATCTCAGAAGAGGATCTGGCAGCAAATGATATCCTGGATT  
ACAAGGATGACGACGATAAGGTTTAA

**Protein Sequence:** >RC231015 representing NM\_001198763  
Red=Cloning site Green=Tags(s)

MLRAALPALLLPLLGLAAAADCPSSWTIQFDSCYIFLQEAIKVESIEDVRNQCTDHGADMISIHNEE  
ENAFILDTLKKQWKGPDILLGMFYDTPYKRYLSDNHILISALVIASVILTVLGAIWFLYKKHSD  
SRFTTVFSTAPQSPYNEDCVLVGEEENEYPVQFD

**TRTRPLEQKLI**SEEDLAANDILDYKDDDDKV

**Chromatograms:** [https://cdn.origene.com/chromatograms/ja1461\\_f01.zip](https://cdn.origene.com/chromatograms/ja1461_f01.zip)



[View online »](#)

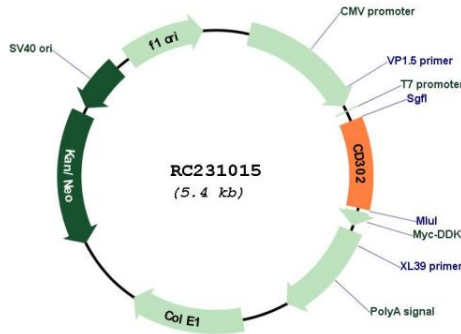


**Protein Families:** Druggable Genome, Transmembrane

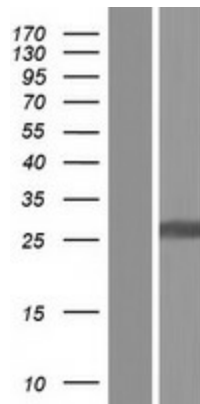
**MW:** 20 kDa

**Gene Summary:** CD302 is a C-type lectin receptor involved in cell adhesion and migration, as well as endocytosis and phagocytosis (Kato et al., 2007 [PubMed 17947679]).[supplied by OMIM, Aug 2008]

**Product images:**



Circular map for RC231015



Western blot validation of overexpression lysate (Cat# [LY434014]) using anti-DDK antibody (Cat# [TA50011-100]). Left: Cell lysates from untransfected HEK293T cells; Right: Cell lysates from HEK293T cells transfected with RC231015 using transfection reagent MegaTran 2.0 (Cat# [TT210002]).