

Product datasheet for **RC231001**

C16orf95 (NM_001195125) Human Tagged ORF Clone

Product data:

Product Type: Expression Plasmids
Product Name: C16orf95 (NM_001195125) Human Tagged ORF Clone
Tag: Myc-DDK
Symbol: C16orf95
Mammalian Cell Selection: Neomycin
Vector: pCMV6-Entry (PS100001)
E. coli Selection: Kanamycin (25 ug/mL)
ORF Nucleotide Sequence: >RC231001 representing NM_001195125
 Red=Cloning site Blue=ORF Green=Tags(s)

TTTTGTAATACGACTCACTATAGGGCGGCCGGAATTCGTCGACTGGATCCGGTACCGAGGAGATCTGCCGCC**CGATCGCC**

ATGCGTGCGAGCCGGTCCCCACCGTCCCCGCGCGTGTGCACCATCATCATGAGGCCACTGGAGCAGCCTCAGGCGCTGCTGCCGGGGGGCCGGGCGCGGGTGCCTCGGGCTCTGCAGGTTGGCACTCACACCCAGCGCGCAGGATGGCAGGAATAGCACATTTCAAACCTACAAGAAAGAAGTGTGCCTCCCCGTATTTCGATGCACCTGGCCCCCTGGCCATCTGCTGTGAATGCCAGACCAGATTGGGGGCCCGCTGCCTGTGTCCAGGGTGAAGCAGCACTGCCTTACTGGGTCCCTCTGTCCCTGAGACCCCGAAAGCAGCACCCCTGTGGATGCATGTGCTGGCACAACTGCTGGCGGATCTGCGGTGATGAGTGCCTGTTGTCCAAGTCCAGCAGCTCCAGGCCCTACCAGGACCAGCTACCGGCTCTGCAGCGCTCTGCTGCCCTCGGCCTCC

ACGCGTACGCGGCCGCTCGAGCAGAACTCATCTCAGAAGAGGATCTGGCAGCAAATGATATCCTGGATTACAAGGATGACGACGATAAGGTTTAA

Protein Sequence: >RC231001 representing NM_001195125
 Red=Cloning site Green=Tags(s)

MRASRSPSPRRCHHHHEATGAASGAAAGGPGAGCVGLCRLALTPSAQDGRNSTFQTYKKEVCLPRHSMH
 PGPWAIICCECQTRFGRLPVSVEAALPYWVPLSLRPRKQHPQWMAAGTTAGGSAVMSACCPSSSSSRP
 PTRTSYRLLQRVCCPSAS

TRTRPLEQKLISEEDLAANDILDYKDDDDKV

Chromatograms: https://cdn.origene.com/chromatograms/ja1252_d04.zip

Restriction Sites: SgfI-MluI



[View online »](#)

Cloning Scheme:


ACCN: NM_001195125

ORF Size: 474 bp

OTI Disclaimer: The molecular sequence of this clone aligns with the gene accession number as a point of reference only. However, individual transcript sequences of the same gene can differ through naturally occurring variations (e.g. polymorphisms), each with its own valid existence. This clone is substantially in agreement with the reference, but a complete review of all prevailing variants is recommended prior to use. [More info](#)

OTI Annotation: This clone was engineered to express the complete ORF with an expression tag. Expression varies depending on the nature of the gene.

Components: The ORF clone is ion-exchange column purified and shipped in a 2D barcoded Matrix tube containing 10ug of transfection-ready, dried plasmid DNA (reconstitute with 100 ul of water).

- Reconstitution Method:**
1. Centrifuge at 5,000xg for 5min.
 2. Carefully open the tube and add 100ul of sterile water to dissolve the DNA.
 3. Close the tube and incubate for 10 minutes at room temperature.
 4. Briefly vortex the tube and then do a quick spin (less than 5000xg) to concentrate the liquid at the bottom.
 5. Store the suspended plasmid at -20°C. The DNA is stable for at least one year from date of shipping when stored at -20°C.

RefSeq: [NM_001195125.2](#)

RefSeq ORF: 477 bp

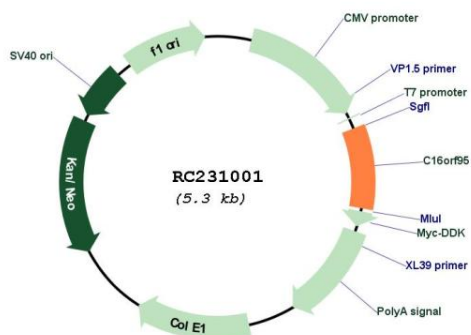
Locus ID: 100506581

UniProt ID: [Q9H693](#)

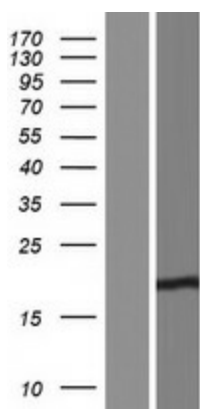
Cytogenetics: 16q24.2

MW: 17.2 kDa

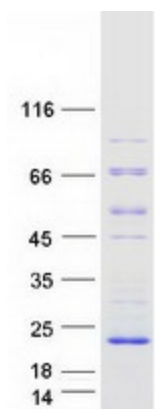
Product images:



Circular map for RC231001



Western blot validation of overexpression lysate (Cat# [LY434000]) using anti-DDK antibody (Cat# [TA50011-100]). Left: Cell lysates from untransfected HEK293T cells; Right: Cell lysates from HEK293T cells transfected with RC231001 using transfection reagent MegaTran 2.0 (Cat# [TT210002]).



Coomassie blue staining of purified C16orf95 protein (Cat# [TP331001]). The protein was produced from HEK293T cells transfected with C16orf95 cDNA clone (Cat# RC231001) using MegaTran 2.0 (Cat# [TT210002]).