

Product datasheet for RC230997

CLEC2D (NM_001197317) Human Tagged ORF Clone

Product data:

Product Type: Expression Plasmids
Product Name: CLEC2D (NM_001197317) Human Tagged ORF Clone
Tag: Myc-DDK
Symbol: CLEC2D
Synonyms: CLAX; LLT1; OCIL
Mammalian Cell Selection: Neomycin
Vector: pCMV6-Entry (PS100001)
E. coli Selection: Kanamycin (25 ug/mL)
ORF Nucleotide Sequence: >RC230997 representing NM_001197317
 Red=Cloning site Blue=ORF Green=Tags(s)

TTTTGTAATACGACTCACTATAGGGCGGCCGGAATTCGTCGACTGGATCCGGTACCGAGGAGATCTGCC
 GCC**CGATCGCC**

ATGCATGACAGTAACAATGTGGAGAAAGACATTACACCATCTGAATTGCCTGCAAACCCAGCAATAAGAG
 CTAAGTCTCAAGAGCCATCAGTATGTCTTCAAGCTGCATGCCAGAAAGCTGGATTGGTTTTCAAAG
 AAAGTGTCTATTTTTCTGATGACACCAAGAAGTGGACATCAAGTCAGAGGTTTTGTGACTCACAAGAT
 GCTGATCTTGCTCAGGTTGAAAGCTTCCAGGAAGTGAATTTCTGTTGAGATATAAAGGCCCATCTGATC
 ACTGGATTGGGCTGAGCAGAGAACAAGGCCAACCATGGAATGGATAAATGGTACTGAATGGACAAGACA
 GTTTCCTATCCTGGGAGCAGGAGAGTGTGCTATTTGAATGACAAAGGTGCCAGTAGTCCAGGCCACTAC
 ACAGAGAGGAAGTGGATTGTTCCAATCAGATATACATGTC

ACGCGTACGCGGCCGCTCGAGCAGAACTCATCTCAGAAGAGGATCTGGCAGCAAATGATATCCTGGATT
 ACAAGGATGACGACGATAAGGTTTAA

Protein Sequence: >RC230997 representing NM_001197317
 Red=Cloning site Green=Tags(s)

MHDSNNVEKDITPSELPANPAIRANCHQEPSVCLQAACPESWIGFQRKCFYFSDDTKNWTSSQRFCDSDQ
 ADLAQVESFQELNFLRYKGPSDHWIGLSREQQPWKWINGTEWRQFPILGAGECAYLNDKGASSARHY
 TERKWICKSIDIHV

TRTRPLEQKLISEEDLAANDILDYKDDDDKV

Restriction Sites: Sgfl-MluI



[View online »](#)

Cloning Scheme:


ACCN: NM_001197317

ORF Size: 462 bp

OTI Disclaimer: The molecular sequence of this clone aligns with the gene accession number as a point of reference only. However, individual transcript sequences of the same gene can differ through naturally occurring variations (e.g. polymorphisms), each with its own valid existence. This clone is substantially in agreement with the reference, but a complete review of all prevailing variants is recommended prior to use. [More info](#)

OTI Annotation: This clone was engineered to express the complete ORF with an expression tag. Expression varies depending on the nature of the gene.

Components: The ORF clone is ion-exchange column purified and shipped in a 2D barcoded Matrix tube containing 10ug of transfection-ready, dried plasmid DNA (reconstitute with 100 ul of water).

- Reconstitution Method:**
1. Centrifuge at 5,000xg for 5min.
 2. Carefully open the tube and add 100ul of sterile water to dissolve the DNA.
 3. Close the tube and incubate for 10 minutes at room temperature.
 4. Briefly vortex the tube and then do a quick spin (less than 5000xg) to concentrate the liquid at the bottom.
 5. Store the suspended plasmid at -20°C. The DNA is stable for at least one year from date of shipping when stored at -20°C.

RefSeq: [NM_001197317.3](#)

RefSeq ORF: 465 bp

Locus ID: 29121

UniProt ID: [Q9UHP7](#)

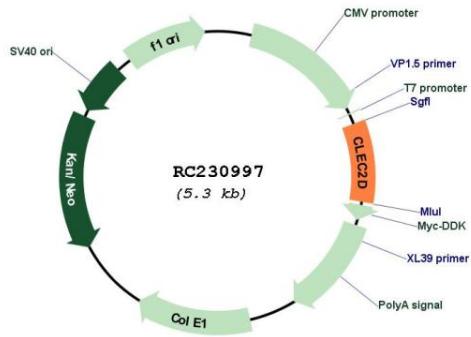
Cytogenetics: 12p13.31

Protein Families: Druggable Genome, Transmembrane

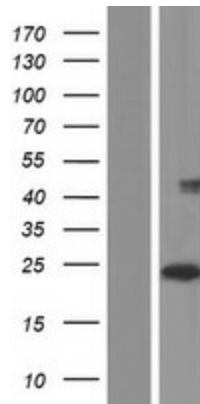
MW: 18.2 kDa

Gene Summary: This gene encodes a member of the natural killer cell receptor C-type lectin family. The encoded protein inhibits osteoclast formation and contains a transmembrane domain near the N-terminus as well as the C-type lectin-like extracellular domain. Several alternatively spliced transcript variants have been identified for this gene. [provided by RefSeq, Oct 2010]

Product images:



Circular map for RC230997



Western blot validation of overexpression lysate (Cat# [LY433996]) using anti-DDK antibody (Cat# [TA50011-100]). Left: Cell lysates from untransfected HEK293T cells; Right: Cell lysates from HEK293T cells transfected with RC230997 using transfection reagent MegaTran 2.0 (Cat# [TT210002]).