

## Product datasheet for RC230996

### TMEM35B (NM\_001195156) Human Tagged ORF Clone

#### Product data:

Product Type:	Expression Plasmids
Product Name:	TMEM35B (NM_001195156) Human Tagged ORF Clone
Tag:	Myc-DDK
Symbol:	TMEM35B
Synonyms:	ZMYM6NB
Mammalian Cell Selection:	Neomycin
Vector:	pCMV6-Entry (PS100001)
E. coli Selection:	Kanamycin (25 ug/mL)
ORF Nucleotide Sequence:	>RC230996 representing NM_001195156 Red=Cloning site Blue=ORF Green=Tags(s)

TTTTGTAATACGACTCACTATAGGGCGGCCGGAATTCGTCGACTGGATCCGGTACCGAGGAGATCTGCC  
GCC**CGATCGCC**

ATGGCGCTCTGCTTTCGGTGCTGCGTGTACTGCTGGGCGGCTTCTTCGCGCTCGTGGGTTGGCCAAGC  
TCTCGGAGGAGATCTCGGCTCCAGTTTCGGAGCGGATGAATGCCCTGTCGTGCAGTTTCTGAGGTGTT  
CCCCTGAAGGTATTTGGCTACCAGCCAGATCCCCTGAACACCAATAGCTGTGGGCTTCTGGAAGT  
CTGGCTGGGTTGCTGCTGGTTCATGGGCCACCGATGCTGCAAGAGATCAGTAACCTGTTCTTATTCTGC  
TCATGATGGGGCTATCTCACCTTGGCAGCTCTGAAAGAGTCACTAAGCACCTGTATCCCAGCCATTGT  
CTGCTGGGTTCTGCTGCTGCTGAATGTCGGCCAGCTCTTAGCCAGACTAAGAAGGTGGTCAGACCC  
ACTAGGAAGAAGACTCTAAGTACATTCAAGGAATCCTGGAAG

**ACGCGT**ACGCGGCCGCTCGAGCAGAACTCATCTCAGAAGAGGATCTGGCAGCAAATGATATCCTGGATT  
ACAAGGATGACGACGATAAGGTTTAA

Protein Sequence:	>RC230996 representing NM_001195156 Red=Cloning site Green=Tags(s)
-------------------	---

MALLLSVLRVLLGGFFALVGLAKLSEEISAPVSRMNAIFVQFAEVFPLKVFQYQPDPLNYQIAVGFLEL  
LAGLLLVMGPPMLQEISNLFLLMMGAIFTLAALKESLSTCIPAIVCLGFLLLLNVGQLLAQTKKVVPR  
TRKKTLSSTFKESWK

**TR**TRPLEQKLISEEDLAANDILDYKDDDDKV

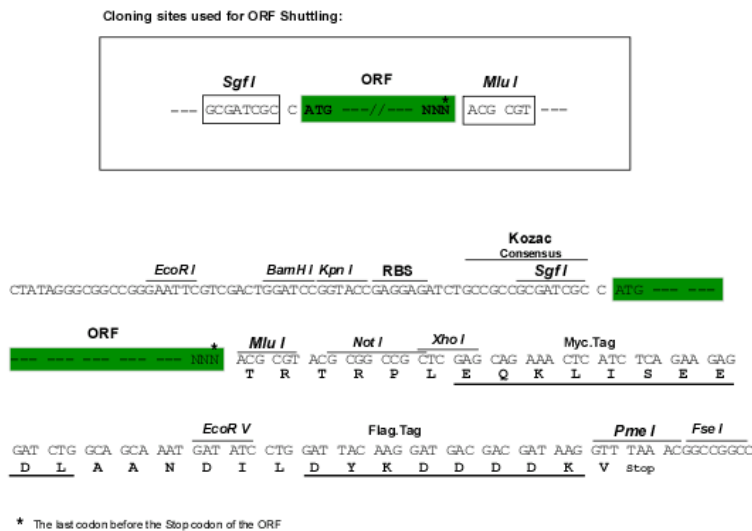
Chromatograms:	<a href="https://cdn.origene.com/chromatograms/ja1250_e12.zip">https://cdn.origene.com/chromatograms/ja1250_e12.zip</a>
----------------	---



[View online »](#)

**Restriction Sites:** SgfI-MluI

**Cloning Scheme:**



**ACCN:** NM\_001195156

**ORF Size:** 462 bp

**OTI Disclaimer:** The molecular sequence of this clone aligns with the gene accession number as a point of reference only. However, individual transcript sequences of the same gene can differ through naturally occurring variations (e.g. polymorphisms), each with its own valid existence. This clone is substantially in agreement with the reference, but a complete review of all prevailing variants is recommended prior to use. [More info](#)

**OTI Annotation:** This clone was engineered to express the complete ORF with an expression tag. Expression varies depending on the nature of the gene.

**Components:** The ORF clone is ion-exchange column purified and shipped in a 2D barcoded Matrix tube containing 10ug of transfection-ready, dried plasmid DNA (reconstitute with 100 ul of water).

**Reconstitution Method:**

1. Centrifuge at 5,000xg for 5min.
2. Carefully open the tube and add 100ul of sterile water to dissolve the DNA.
3. Close the tube and incubate for 10 minutes at room temperature.
4. Briefly vortex the tube and then do a quick spin (less than 5000xg) to concentrate the liquid at the bottom.
5. Store the suspended plasmid at -20°C. The DNA is stable for at least one year from date of shipping when stored at -20°C.

**RefSeq:** [NM\\_001195156.1](#), [NP\\_001182085.1](#)

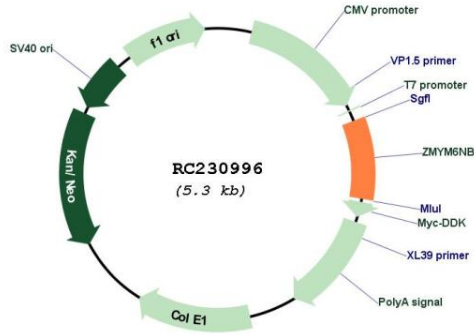
**RefSeq ORF:** 465 bp

**Locus ID:** 100506144

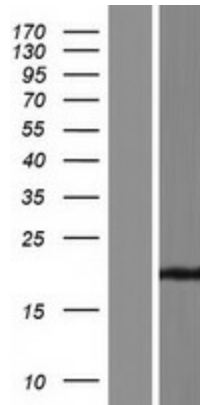
**UniProt ID:** [Q8NCS4](#)

Cytogenetics: 1p34.3  
 MW: 17.3 kDa

**Product images:**



Circular map for RC230996



Western blot validation of overexpression lysate (Cat# [LY433995]) using anti-DDK antibody (Cat# [TA50011-100]). Left: Cell lysates from untransfected HEK293T cells; Right: Cell lysates from HEK293T cells transfected with RC230996 using transfection reagent MegaTran 2.0 (Cat# [TT210002]).