

Product datasheet for **RC230990**

BCL7B (NM_001197244) Human Tagged ORF Clone

Product data:

Product Type: Expression Plasmids
Product Name: BCL7B (NM_001197244) Human Tagged ORF Clone
Tag: Myc-DDK
Symbol: BCL7B
Mammalian Cell Selection: Neomycin
Vector: pCMV6-Entry (PS100001)
E. coli Selection: Kanamycin (25 ug/mL)
ORF Nucleotide Sequence: >RC230990 representing NM_001197244
 Red=Cloning site Blue=ORF Green=Tags(s)

TTTTGTAATACGACTCACTATAGGGCGGCCGGGAATTCGTCGACTGGATCCGGTACCGAGGAGATCTGCC
 GCC**CGATCGCC**

ATGTCGGGCCGGTCCGGTCCGGGCGGAGACCCGCAGCCGGGCCAAGGACGACATCAAGAAGGTGATGGCGG
 CCATCGAGAAAGTGCAGAAATGGGAGAAGAAGTGGGTGACTGTGGGTGACACGTCCTCGAGGATATTTAA
 GTGGGTTCTGTGACAGACAGCAAGGAGAAAGAAAAGTCAAAATCGAACAGTTCCAGCAGCCCGAGAACCT
 AATGGCTTTCCTTCTGATGCCTCAGCCAATTCCTCTCCTTCTTGAATCCAGGAGCCCTCCCTGCCCT
 CCTCGGAAGTTGCTGATGAACCTCCTACCCTACCAAGGAAGAACCAGTCCACTAGAGACACAGGTCGT
 TGAGGAAGAGGAAGACTCAGGTGCCCGCCCTGAAGCGCTTCTGTGTGGACCAACCCACAGTGCCGCAG
 ACGGCGTCAGAAAGC

ACGCGTACGCGGCCGCTCGAGCAGAAACTCATCTCAGAAGAGGATCTGGCAGCAAATGATATCCTGGATT
 ACAAGGATGACGACGATAAGGTTTAA

Protein Sequence: >RC230990 representing NM_001197244
 Red=Cloning site Green=Tags(s)

MSGRSVRAETRSRAKDDIKKVMAAIEKVRKWEKKWVTVDGDTSLRIFKWPVTDSSKEKSKSNSSAAREP
 NGFPSDASANSSLLLEFQEPSLPSSEVADEPPTLTKEEPVPLETQVVEEEDSGAPPLKRFCDVDPQPTVPQ
 TASES

TRTRPLEQKLI SEEDLAANDILDYKDDDDKV

Chromatograms: https://cdn.origene.com/chromatograms/ja1448_a09.zip

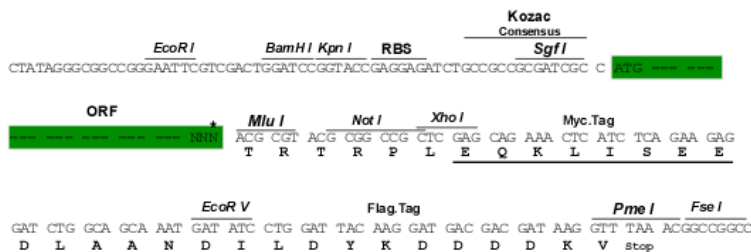
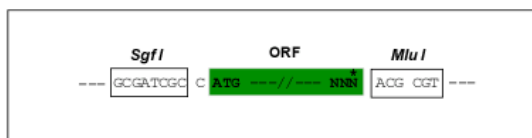
Restriction Sites: SgfI-MluI



[View online >](#)

Cloning Scheme:

Cloning sites used for ORF Shutting:



* The last codon before the Stop codon of the ORF

ACCN: NM_001197244

ORF Size: 435 bp

OTI Disclaimer: The molecular sequence of this clone aligns with the gene accession number as a point of reference only. However, individual transcript sequences of the same gene can differ through naturally occurring variations (e.g. polymorphisms), each with its own valid existence. This clone is substantially in agreement with the reference, but a complete review of all prevailing variants is recommended prior to use. [More info](#)

OTI Annotation: This clone was engineered to express the complete ORF with an expression tag. Expression varies depending on the nature of the gene.

Components: The ORF clone is ion-exchange column purified and shipped in a 2D barcoded Matrix tube containing 10ug of transfection-ready, dried plasmid DNA (reconstitute with 100 ul of water).

Reconstitution Method:

1. Centrifuge at 5,000xg for 5min.
2. Carefully open the tube and add 100ul of sterile water to dissolve the DNA.
3. Close the tube and incubate for 10 minutes at room temperature.
4. Briefly vortex the tube and then do a quick spin (less than 5000xg) to concentrate the liquid at the bottom.
5. Store the suspended plasmid at -20°C. The DNA is stable for at least one year from date of shipping when stored at -20°C.

RefSeq: [NM_001197244.2](#)

RefSeq ORF: 438 bp

Locus ID: 9275

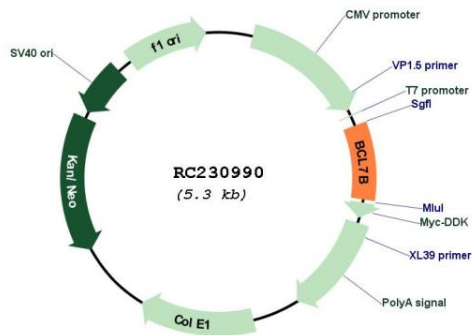
UniProt ID: [Q9BQE9](#)

Cytogenetics: 7q11.23

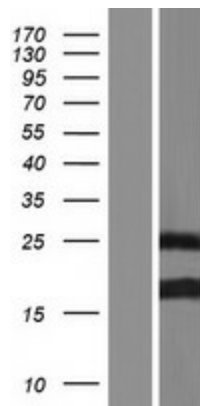
MW: 16.5 kDa

Gene Summary: This gene encodes a member of the BCL7 family including BCL7A, BCL7B and BCL7C proteins. This member is BCL7B, which contains a region that is highly similar to the N-terminal segment of BCL7A or BCL7C proteins. The BCL7A protein is encoded by the gene known to be directly involved in a three-way gene translocation in a Burkitt lymphoma cell line. This gene is located at a chromosomal region commonly deleted in Williams syndrome. This gene is highly conserved from *C. elegans* to human. Multiple alternatively spliced transcript variants have been found for this gene. [provided by RefSeq, Oct 2010]

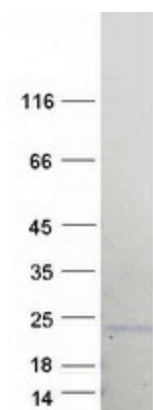
Product images:



Circular map for RC230990



Western blot validation of overexpression lysate (Cat# [LY433989]) using anti-DDK antibody (Cat# [TA50011-100]). Left: Cell lysates from untransfected HEK293T cells; Right: Cell lysates from HEK293T cells transfected with RC230990 using transfection reagent MegaTran 2.0 (Cat# [TT210002]).



Coomassie blue staining of purified BCL7B protein (Cat# [TP330990]). The protein was produced from HEK293T cells transfected with BCL7B cDNA clone (Cat# RC230990) using MegaTran 2.0 (Cat# [TT210002]).