

Product datasheet for **RC230968**

MD2 (LY96) (NM_001195797) Human Tagged ORF Clone

Product data:

Product Type: Expression Plasmids
Product Name: MD2 (LY96) (NM_001195797) Human Tagged ORF Clone
Tag: Myc-DDK
Symbol: MD2
Synonyms: ESOP-1; ly-96; MD-2; MD2
Mammalian Cell Selection: Neomycin
Vector: pCMV6-Entry (PS100001)
E. coli Selection: Kanamycin (25 ug/mL)
ORF Nucleotide Sequence: >RC230968 representing NM_001195797
Red=Cloning site Blue=ORF Green=Tags(s)

TTTTGTAACTACGACTCACTATAGGGCGGCCGGAATTCGTCGACTGGATCCGGTACCGAGGAGATCTGCC
 GCCCGATCGCC

ATGTTACCATTCTGTTTTTTCCACCCTGTTTTCTTCCATATTTACTGAAGCTCAGAAGCAGTATTGGG
TCTGCAACTCATCGATGCAAGTATTTCAACCTACTGTGGGAGAGATTTAAAGCAATTATTTCAA
TCTCTATAACTGTCAACACCATGAATCTTCAAAGCGCAAAGAAGTTATTTGCCGAGGATCTGATGAC
GATTACTCTTTTGCAGAGCTCTGAAGGGAGAGACTGTGAATACAACAATATCATTCTCCTTCAAGGGAA
TAAATTTTCTAAGGGAAAATACAAATGTGTTGTTGAAGCTATTTCTGGGAGCCCAGAAGAAATGCTCTT
TTGCTTGAGTTTGTATCCTACACCAACCTAATTCAAAT

ACGCGTACGCGGCCGCTCGAGCAGAACTCATCTCAGAAGAGGATCTGGCAGCAATGATATCCTGGATT
ACAAGGATGACGACGATAAGGTTTAA

Protein Sequence: >RC230968 representing NM_001195797
Red=Cloning site Green=Tags(s)

MLPFLFFSTLFSSIFTEAQKQYWVCNSSDASISYTYCGRDLKQLYFNLYITVNTMNLPRKEVICRGSDD
 DYSFCRALKGETVNTTISFSFKGIKFSKGKYKCVVEAISGSPEMLFCLEFVILHQPNSN

TRTRPLEQKLISEEDLAANDILDYKDDDDKV

Chromatograms: https://cdn.origene.com/chromatograms/ja2682_h09.zip

Restriction Sites: SgfI-MluI



[View online »](#)

Cloning Scheme:


ACCN: NM_001195797

ORF Size: 390 bp

OTI Disclaimer: Due to the inherent nature of this plasmid, standard methods to replicate additional amounts of DNA in E. coli are highly likely to result in mutations and/or rearrangements. Therefore, OriGene does not guarantee the capability to replicate this plasmid DNA. Additional amounts of DNA can be purchased from OriGene with batch-specific, full-sequence verification at a reduced cost. Please contact our customer care team at custsupport@origene.com or by calling 301.340.3188 option 3 for pricing and delivery.

The molecular sequence of this clone aligns with the gene accession number as a point of reference only. However, individual transcript sequences of the same gene can differ through naturally occurring variations (e.g. polymorphisms), each with its own valid existence. This clone is substantially in agreement with the reference, but a complete review of all prevailing variants is recommended prior to use. [More info](#)

OTI Annotation: This clone was engineered to express the complete ORF with an expression tag. Expression varies depending on the nature of the gene.

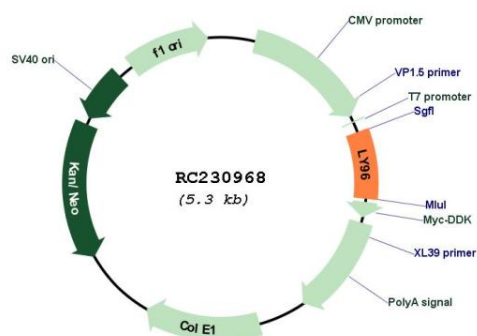
Components: The ORF clone is ion-exchange column purified and shipped in a 2D barcoded Matrix tube containing 10ug of transfection-ready, dried plasmid DNA (reconstitute with 100 ul of water).

Reconstitution Method:

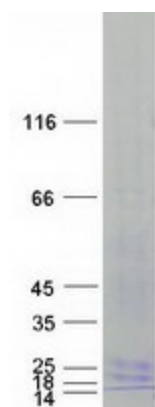
1. Centrifuge at 5,000xg for 5min.
2. Carefully open the tube and add 100ul of sterile water to dissolve the DNA.
3. Close the tube and incubate for 10 minutes at room temperature.
4. Briefly vortex the tube and then do a quick spin (less than 5000xg) to concentrate the liquid at the bottom.
5. Store the suspended plasmid at -20°C. The DNA is stable for at least one year from date of shipping when stored at -20°C.

Note:	Plasmids are not sterile. For experiments where strict sterility is required, filtration with 0.22um filter is required.
RefSeq:	NM_001195797.1 , NP_001182726.1
RefSeq Size:	552 bp
RefSeq ORF:	393 bp
Locus ID:	23643
UniProt ID:	Q9Y6Y9
Cytogenetics:	8q21.11
Protein Families:	Secreted Protein
Protein Pathways:	Pathogenic Escherichia coli infection, Toll-like receptor signaling pathway
MW:	14.9 kDa
Gene Summary:	This gene encodes a protein which associates with toll-like receptor 4 on the cell surface and confers responsiveness to lipopolysaccharide (LPS), thus providing a link between the receptor and LPS signaling. Studies of the mouse ortholog suggest that this gene may be involved in endotoxin neutralization. Alternative splicing results in multiple transcript variants encoding different isoforms. [provided by RefSeq, Sep 2010]

Product images:



Circular map for RC230968



Coomassie blue staining of purified LY96 protein (Cat# [TP330968]). The protein was produced from HEK293T cells transfected with LY96 cDNA clone (Cat# RC230968) using MegaTran 2.0 (Cat# [TT210002]).