

Product datasheet for **RC230899**

EIF4G1 (NM_001194946) Human Tagged ORF Clone

Product data:

Product Type: Expression Plasmids
Product Name: EIF4G1 (NM_001194946) Human Tagged ORF Clone
Tag: Myc-DDK
Symbol: EIF4G1
Synonyms: EIF-4G1; EIF4F; EIF4G; EIF4GI; P220; PARK18
Vector: pCMV6-Entry (PS100001)
E. coli Selection: Kanamycin (25 ug/mL)
Cell Selection: Neomycin
ORF Nucleotide Sequence: >RC230899 representing NM_001194946
Red=Cloning site Blue=ORF Green=Tags(s)

TTTTGTAATACGACTCACTATAGGGCGCCGGAATTCGTCGACTGGATCCGGTACCGAGGAGATCTGCC
GCCGCGATCGCC

ATGAACAAAGCTCCACAGTCCACAGGCCCCACCCGCCCCATCCCCGGACTCCCACAGCCAGCGTTTC
CCCCGGGGCAGACAGCGCCGGTGGTGTTCAGTACGCCACAAGCGACAAATGAACACGCCTTCTCAGCC
CGCCAGGGAGGATTAGGTCTCTGCAGCACTTCTACCCTAGCCGGGCCAGCCCCGAGCAGTGCAGCC
TCCCGAGTGCAGAGTGCAGCCCCCTGCCCGCCCTGGCCAGCTGCCCATGTCTACCCTGCTGGATCCCAAG
TAATGATGATCCCTTCCAGATCTCTACCCAGCCTCCCAGGGGGCTACTACATCCCTGGACAGGGGCG
TTCCACATACGTTGTCCCGACACAGCAGTACCCTGTGCAGCCAGGAGCCCCAGGCTTCTATCCAGGTGCA
AGCCCTACAGAATTTGGGACCTACGCTGGCGCCTACTATCCAGCCCAAGGGGTGCAGCAGTTTCCCACTG
GCGTGGCCCCCGCCAGTTTTGATGAACCAGCCACCCAGATTGCTCCCAAGAGGGAGCGTAAGACGAT
CCGAATTCGAGATCCAAACCAAGGAGGAAAGGATATCACAGAGGAGATCATGTCTGGGGCCCGCACTGCC
TCCACACCCACCCCTCCCAGACGGGAGCGGTCTGGAGCCTCAAGCTAATGGGGAGACGCCCCAGGTTG
CTGTATTGTCCGGCCAGATGACCGGTACAGGGAGCAATCATTGCTGACCGGCCAGGGCTGCCTGGCCC
AGAGCATAGCCCTTCAGAATCCCAGCCTTCGTCGCCTTCTCCGACCCATCACCATCCCCAGTCTTGAA
CCGGGGTCTGAGCCTAATCTCGCAGTCTCTCTATTCTGGGGACACTATGACAATAACAATGTCTG
TAGAAGAATCAACCCCATCTCCCGTGAAGTGGGGAGCCATATCGCCTCTCTCCAGAACCCTCTCT
CGCCGAACCCATACTGGAAGTAGAAGTGACACTTAGCAAACCGGTTCCAGAATCTGAGTTTTCTCCAGT
CCTCTCCAGGCTCCCACCCCTTTGGCATCTCACACAGTGGAAATTCATGAGCCTAATGGCATGGTCCCAT
CTGAAGATCTGGAACCAGAGGTGGAGTCAAGCCAGAGCTTGCTCCTCCCCAGCTTGCCCTCCGAATC
CCCTGTGCCATTGCTCCAACCTGCCAACCTGAGGAAGTCTCAACGGAGCCCCCTGCCACCAGCTGTG
GACTTAAGCCAGTCAGTGAAGCAGAGGAGCAGGCCAAGGAGGTGACAGCATCAGTGGCGCCCCCACC
TCCCTCTGCTACTCCAGCTACGGCTCCTTCAGCTACTTCCCCAGCTCAGGAGGAGGAAATGGAAGAAG
AGAAGAAGAGGAAGAAGGAGAAGCAGGAGAAGCAGGAGAAGTGAAGTGAAGGAGGAGGAGGAACTG
CTCCCCCAGAGAGTACCCTATTCCAGCCAATTGTCTCAGAATTTGGAGGCAGCAGCAGCCACTCAAG



[View online >](#)

TGGCAGTATCTGTGCCAAAGAGGAGACGGAAAAATTAAGGAGCTAAATAAGAAGGAGGCTGTTGGAGACCT
TCTGGATGCCTTCAAGGAGGCGAACCCGGCAGTACCAGAGGTGAAAAATCAGCCTCCTGCAGGCAGCAAT
CCAGGCCCAGAGTCTGAGGGCAGTGGTGTGCCCCACGTCCTGAGGAAGCAGATGAGACCTGGGACTCAA
AGGAAGACAAAATTCACAATGCTGAGAACATCCAGCCCGGGAACAGAAGTATGAATATAAGTCAGATCA
GTGGAAGCCTCTAAACCTAGAGGAGAAAAACGTTACGACCGTGAGTTCCTGCTTGGTTTTAGTTCATC
TTTGCCAGTATGCAGAAGCCAGAGGGATTGCCACATATCAGTGACGTGGTGTGGACAAGGCCAATAAAA
CACCCTGCGGCCACTGGATCCCACTAGACTACAAGGCATAAATTTGGCCAGACTTCACTCCATCCTT
TGCCAACCTTGGCCGGACAACCCCTTAGCACCCGTGGGCCCCCAAGGGGTGGGCCAGGTGGGAGCTGCC
CGTGGGCCGGCTGGCCTGGGACCCCGGCCTCTCAGCAGGGACCCGAAAAGAACCACGCAAGATCATTG
CCACAGTGTTAATGACCGAAGATATAAACTGAACAAAGCAGAGAAAGCCTGAAAACCCAGCAGCAAGCG
GACGGCGCTGATAAGGATCGAGGGGAAGAAGTGTGATGGCAGCAAAACCCAGGACCTATTCGCGAGG
GTGCGCTCCATCCTGAATAAACTGACACCCAGATGTTCCAGCAGCTGATGAAGCAAGTGACGCAGCTGG
CCATCGACACCGAGGAACGCCTCAAAGGGGTATTGACCTCATTTTTGAGAAGGCCATTTAGAGCCCAA
CTTCTCTGTGGCCTATGCCAACATGTGCCGCTGCCTCATGGCGTGAAAGTGCCCACTACGAAAAGCCA
ACAGTGACTGTGAACTTCCGAAAGCTGTTGTTGAATCGATGTGAGAAGGAGTTTGAGAAAAGCAAGATG
ATGATGAGGTTTTTGAGAAGAAGCAAAAAGAGATGGATGAAGCTGCTACGGCAGAGGAACAGGAGCGCT
GAAGGAAGAGCTGGAAGAGGCTCGGGACATAGCCCGGCGCGCTCTTAGGGAATATCAAGTTTATTGGA
GAGTTGTTCAAAGTGAAGATGTTAACAGAGGCAATAATGCATGACTGTGTGGTCAAAGTGCCTAAGAACC
ATGATGAAGAGTCCCTTGAAGTGCCTTTGTGCTGCTCACCACCATTTGGCAAAGACTGGACTTTGAAAA
AGCCAAGCCCGAATGGATCAGTATTTCAACCAGATGGAAAAATCATTAAAGAAAAGAAGACGTCATCC
CGCATCCGCTTTATGCTGCAGGACGTGCTGGATCTCGAGGGAGCAATTTGGTGCCACGCCGAGGGGATC
AGGGTCCCAAGACCATTGACCAGATCCATAAGGAGGCTGAGATGGAAGAACATCGAGAGCACATCAAAGT
GCAGCAGCTCATGGCCAAGGGCAGTGACAAGCGTCGGGGCGGTCTCCAGGCCCTCCCACAGCCGTTGGA
CTTCCCCTTGTGGATGATGGTGGCTGGAACACAGTTCATCAGCAAAAGGTAGCCGCCCATTTGACACCT
CACGACTACCAAGATACCAAGCCTGGCTCCATCGATTCTAACAAACAGCTCTTTGACCTGGAGGGCG
ACTGAGCTGGGGCAAGGGCAGCAGCGGAGGCTCAGGAGCCAAGCCCTCAGACGCAGCATCAGAAGTGTCT
CGCCAGCTACTAGTACTTTGAATCGTCTCAGCCCTTCAACAAGCGGTACCCACAGAAAAGCACAGATA
ATAGACGTGTGGTGCAGAGGAGTAGCTTGAAGCCGAGAACGAGGCGAGAAAGCTGGAGACCGAGGAGCCG
CCTAGAGCGGAGTGAACGGGAGGGGACCGTGGGACCGCTTGATCGTGCAGGACACCTGCTACCAAG
CGGAGCTTCAAGCAAGGAGTGGAGGAGCGGAGTAGAGAACGGCCCTCCAGCCTGAGGGGCTGCGCAAGG
CAGCTAGCCTCACGGAGGATCGGACCGTGGGCGGGATGCCGTGAAGCGAGAAGTGCCTACCCCAAGT
GAGCCCCCTGAAGGCGGCTCTCTGAGGAGGAGTTAGAGAAGAAATCCAAGGCTATCATTGAGGAATAT
CTCCATCTCAATGACATGAAAGAGGCAAGTCCAGTGCCTGAGGAGCTGGCCTCACCTCCTTGTCTTTCA
TCTTTGTACGGCATGGTGTGAGTCTACGCTGGAGCGCAGTGCCATTGCTCGTGAGCATATGGGGCAGCT
GCTGCACCAGCTGCTCTGTGCTGGGCATCTGTCTACTGCTCAGTACTACCAAGGGTTGTATGAAATCTTG
GAATTGGCTGAGGACATGGAAATGACATCCCCATGTGTGGCTACCTAGCGGAACTGGTAACACCCA
TTCTGCAGGAAGGTGGGTGCCATGGGGGAGCTGTTCAAGGAGATTACAAAGCCTCTGAGACCGTTGGG
CAAAGCTGCTTCCCTGTTGCTGGAGATCCTGGGCTCCTGTGCAAAAGCATGGGTCTAAAAGGTGGGG
ACGCTGTGGCGAGAAGCCGGCTTAGCTGGAAGGAATTTCTACCTGAAGGCCAGGACATTTGGTGCATTG
TCGCTGAACAGAAGGTGGAGTATACCCTGGGAGAGGAGTCGGAAGCCCTGGCCAGAGGGCACTCCCTC
CGAGGAGCTGAACAGGCAGCTGGAGAAGCTGCTGAAGGAGGGCAGCAGTAACCAGCGGTGTTTCACTGG
ATAGAGGCCAACCTGAGTGAGCAGCAGATAGTATCCAACACGTTAGTTTCGAGCCCTCATGACGGTGTCT
GCTATTCTGCAATATTTTTGAGACTCCCTCCGAGTGGACGTTGCAGTGTGAAAGCGCGAGCGAAGCT
GCTGCAGAAATACCTGTGTGACGAGCAGAAGGAGCTACAGGCGCTCTACGCCCTCCAGGCCCTTGTAGTG
ACCTTAGAACAGCCTCCCAACCTGCTGCGGATGTTCTTTGACGCACTGTATGACGAGGACGTGGTGAAGG
AGGATGCCTTCTACAGTTGGGAGAGTAGCAAGGACCCCGCTGAGCAGCAGGGCAAGGGTGTGCCCTTAA
ATCTGTACAGCCTTCTCAAGTGGCTCCGTGAAGCAGAGGAGGAGTCTGACCACAAC

ACGCGTACGCGGCCGCTCGAGCAGAAACTCATCTCAGAAGAGGATCTGGCAGCAAATGATATCCTGGATT
ACAAGGATGACGACGATAAGGTTTAA

Protein Sequence: >RC230899 representing NM_001194946
 Red=Cloning site Green=Tags(s)

MNKAPQSTGPPPAPSPGLPQPAFPPGQTAPVVFSTPQATQMNTSPQPRQGGFRSLQHFYPSRAQPPSSAA
 SRVQSAAPARPGPAAHVYPAGSQVMMIPSQISYPASQGYIIPGQGRSTYVVPTQQYVPVQAGPFYPGA
 SPTEFGTYAGAYPAQGVQQFPTGVAPAPVLMNQPPQIAPKRERKTIRIRDPNQGGKDITEEIMSGARTA
 STPTPPQTGGLEPQANGETPQVAVIVRPDDRSQGAIADRPGLGPEHSPSESQSPSPSPVLE
 PGSEPNLAVLSIPGDMTTIQMSVEESTPISRETGEYRLSPEPTPLAEPILVEVTLSPVPESEFSS
 PLQAPTPLASHTVEIHEPNGMVPSEDLPEVESSPELAPPPACPSESPVPIAPTAQPEELNGAPSPPAV
 DLSPVSEPEEQAKEVTASVAPPTIPSAIPATAPATSAPAEEMEEEEEEEEEGEAGEAGEAESEKGGEL
 LPPESTPIPANLSQNLEAAAATQVAVSVPKRRRIKELNKKEAVGDLLDAFKEANPAVPEVENQPPAGSN
 PGPESESGVPPRPEEADETWDSKEDKIHNAENIQPGEQKYEYKSDQWKPLNLEEKRYDRELLGFQFI
 FASMQKPEGLPHISDVVLDKANKTPLRPLDPTLQGINCGPDFTPSFANLGRITLSTRGPPRGGGGELP
 RGPAGLGPRRSQQGPRKEPRKIATVLMTEEDIKLNKAEKAWKPSKRTAADKDRGEEDADGSKTQDLFRR
 VRSILNKLTPQMFQQLMKQVTQLAIDTEERLKGVIDLIFEKAISEPNFSVAYANMCRCLMALKVPTTEKP
 TVTVNFRKLLLNRCQKEFEKDKDDEVFEEKQKEMDEAATAEERGRLEELEEARDIARRRSLGNIKFIG
 ELFKLMLTEAIMHDCVVKLLKNHDEESLECLCRLLTTIGKDLDFEKAKPRMDQYFNQMEKIIKEKTTSS
 RIRFMLQDVLDLRGSNWVPRRGDQPKTIDQIHKEAEMEEHREHIKVQQLMAKGS DKRRGGPPPI SRG
 LPLVDDGGWNTVPI SKGSRPIDT SRLTKITKPGSIDSNQLFAPGGRLSWGKGS SGGGAKPSDAASEAA
 RPATSTLNRFSALQQAVPTESTDNRRVVQRSSL SRERGEKAGDRGDRLERSERGGDRGDRLD RARTPATK
 RSFSKEVEERSRERPSQPEGLRKAASL TEDRDRGRDAVKREALPPV SPLKAAL SEEELEKSKAIEEY
 LHLNDMKEAVQCQELASPSLLFIFVRHGVESTLERSAIAREHMGQLLHQLLCAGHLSTAQYYQGLYEIL
 ELAEDMEIDIPHWLYLAELVTPILQEGGVPMGELFREITKPLRPLGKAASLLEILGLLCKSMGPKKVG
 TLWREAGLSWKEFLPEGQDIGAFVAEQKVEYTLGEESEAPGQRALPSEELNRQLEKLLKEGSSNQRFVDW
 IEANLSEQQIVSNTLVRALMTAVCYSAIIFETPLRVDVAVLKARAKLLQKYLCEQKELQALYALQALV
 TLEQPPNLLRMFFDALYDEDVVKEDAFYSWESSKDPAEQQGKGVALKSVTAFFKWLREAEESDHN

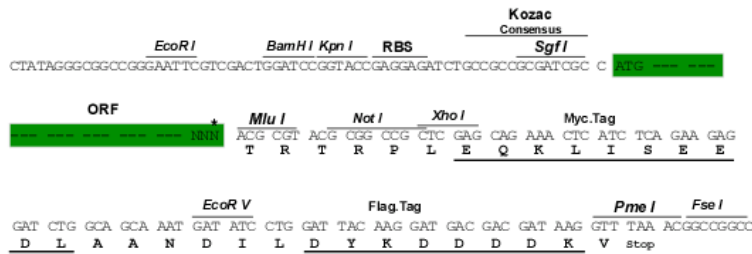
TRTRPLEQKLISEEDLAANDILDYKDDDDKV

Restriction Sites:

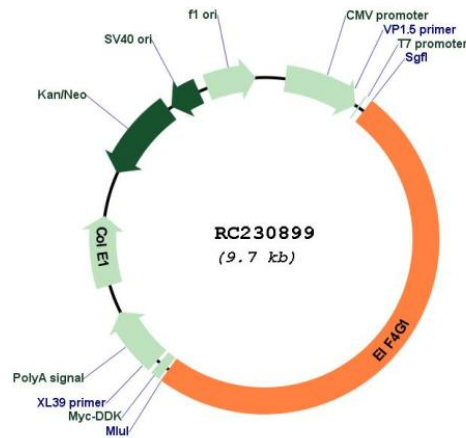
SgfI-MluI

Cloning Scheme:

Cloning sites used for ORF Shuttling:



* The last codon before the Stop codon of the ORF

Plasmid Map:


ACCN: NM_001194946

ORF Size: 4818 bp

OTI Disclaimer: The molecular sequence of this clone aligns with the gene accession number as a point of reference only. However, individual transcript sequences of the same gene can differ through naturally occurring variations (e.g. polymorphisms), each with its own valid existence. This clone is substantially in agreement with the reference, but a complete review of all prevailing variants is recommended prior to use. [More info](#)

OTI Annotation: This clone was engineered to express the complete ORF with an expression tag. Expression varies depending on the nature of the gene.

Components: The ORF clone is ion-exchange column purified and shipped in a 2D barcoded Matrix tube containing 10ug of transfection-ready, dried plasmid DNA (reconstitute with 100 ul of water).

Reconstitution Method:

1. Centrifuge at 5,000xg for 5min.
2. Carefully open the tube and add 100ul of sterile water to dissolve the DNA.
3. Close the tube and incubate for 10 minutes at room temperature.
4. Briefly vortex the tube and then do a quick spin (less than 5000xg) to concentrate the liquid at the bottom.
5. Store the suspended plasmid at -20°C. The DNA is stable for at least one year from date of shipping when stored at -20°C.

RefSeq: [NM_001194946.1](#), [NP_001181875.1](#)

RefSeq ORF: 4821 bp

Locus ID: 1981

Cytogenetics: 3q27.1

Protein Pathways: Viral myocarditis

MW: 176.7 kDa

Gene Summary: The protein encoded by this gene is a component of the multi-subunit protein complex EIF4F. This complex facilitates the recruitment of mRNA to the ribosome, which is a rate-limiting step during the initiation phase of protein synthesis. The recognition of the mRNA cap and the ATP-dependent unwinding of 5'-terminal secondary structure is catalyzed by factors in this complex. The subunit encoded by this gene is a large scaffolding protein that contains binding sites for other members of the EIF4F complex. A domain at its N-terminus can also interact with the poly(A)-binding protein, which may mediate the circularization of mRNA during translation. Alternative splicing results in multiple transcript variants, some of which are derived from alternative promoter usage. [provided by RefSeq, Aug 2010]