

Product datasheet for RC230896

PTPRU (NM_001195001) Human Tagged ORF Clone

Product data:

Product Type:	Expression Plasmids
Product Name:	PTPRU (NM_001195001) Human Tagged ORF Clone
Tag:	Myc-DDK
Symbol:	PTPRU
Synonyms:	FMI; hPTP-J; PCP-2; PTP; PTP-J; PTP-PI; PTP-RO; PTPPSI; PTPRO; PTPU2; R-PTP-PSI; R-PTP-U
Vector:	pCMV6-Entry (PS100001)
E. coli Selection:	Kanamycin (25 ug/mL)
Cell Selection:	Neomycin
ORF Nucleotide Sequence:	>RC230896 representing NM_001195001 Red=Cloning site Blue=ORF Green=Tags(s)

TTTTGTAATACGACTCACTATAGGGCGGCCGGAAATTCGTCGACTGGATCCGGTACCGAGGAGATCTGCC
GCCGGATCGCC

ATGGCCCGTGCCAGGCGCTCGTGCTGGCACTCACCTCCAGCTCTGCGCGCCGGAGACCGAGACTCCGG
CAGCTGGCTGCACCTTCGAGGAGCAAGTGACCCAGCAGTGCCCTGCGAGTACAGCCAGGCCAGTACGA
TGACTTCCAGTGGGAGCAAGTGGAATCCACCCTGGCACCCGGGCACCTGCGGACCTGCCCCACGGCTCC
TACTTGATGGTCAACACTTCCCAGCATGCCCCAGGCCAGCGAGCCATGTCATCTTCCAGAGCCTGAGCG
AGAATGATACCCACTGTGTGCAGTTCAGCTACTTCTGTACAGCCGGGACGGGCACAGCCCGGGCACCT
GGGCGTCTACGTGCGGTTAATGGGGGCCCCCTGGGCAGTGTGTGTGGAATATGACTGGATCCCACGGC
CGTCAGTGGCACCAGGCTGAGCTGGCTGTGAGCACTTCTGGCCCAATGAATATCAGGTGCTGTTTGAGG
CCCTCATCTCCCAGACCGCAGGGGCTACATGGGCCTAGATGACATCCTGCTTCTCAGCTACCCCTGCGC
AAAGGCCCCACACTTCTCCCGCTGGGCGACGTGGAGGTCAACGCGGGCCAGAACGCGTCTGTTCCAGTGC
ATGGCCGCGGGCAGAGCGGCCGAGGCCGAACGCTTCTCTTGAACGGCAGAGCGGGGCGCTGGTGCCGG
CGGCGGGCGTGCGGCACATCAGCCACCGGCGCTTCTTGGCCACTTCCCGCTGGCTGCCCGCGCGC
CGAGCAGGACCTGTACCCTGTGTGTCCAGGCCCGCGGCGCGGGCGTCTCTAACTTCGCGGAGCTC
ATCGTCAAGGAGCCCCAACTCCATCGCGCCCCACAGCTGCTGCGTGTGGCCCCACCTACCTCATCA
TCCAGCTCAACACCAACTCCATCATTGGCGACGGCCGATCGTGCGCAAGGAGATTGAGTACCGCATGGC
GCGCGGGCCCTGGGCTGAGGTGCACGCCGTGAGCTGACAGCTACAAGCTGTGGCACCTCGACCCCGAC
ACAGAGTATGAGATCAGCGTGTGCTCACGCGTCCCGGAGACGGCGGCACTGGCCGCCCTGGGCCACCC
TCATCAGCCGACCAATGCGCAGAGCCATGAGGGCCCCAAAGGCTGGCTTTTGTGAGATCCAGGC
CCGTGAGTACCCCTGACCTGAGTGGAACTGGGCTACAACGTGACGCGTTGCCACACTATACTGTGTCG
CTGTGCTATCACTACACCCTGGCAGCAGCCACAACCAGACCATCCGAGAGTGTGTGAAGACAGAGCAAG
GTGTGACCCGCTACACCATCAAGAACCTGCTGCCTATCGGAAGTTACGTTGAGGCTTGTCTCTACTAA
CCCTGAGGGGCGCAAAGAGGGCAAGGAGTCACTTCCAGACGGATGAGGATGTGCCAGTGGGATTGCA
GCCGAGTCCCTGACCTTCACTCCACTGGAGGACATGATCTTCTCAAGTGGGAGGAGCCCCAGGAGCCCA



[View online »](#)

ATGGTCTCATCACCCAGTATGAGATCAGCTACCAGAGCATCGAGTCATCAGACCCGGCAGTGAACGTGCC
AGGCCACGACGTACCATCTCCAAGCTCCGCAATGAGACCTACCATGTCTTCTCCAACCTGCACCCAGGC
ACCACCTACCTGTTCTCCGTGCGGGCCCGCACAGGCAAAGGCTTCGGCCAGGCGGCACTCACTGAGATAA
CCACTAACATCTCTGCTCCCAGCTTTGATTATGCCGACATGCCGTACCCTGGGCGAGTCTGAGAACAC
CATCACCGTGTGCTGAGGCCGGCACAGGGCCGGTGCGCCATCAGTGTGTACCAGGTGATTGTGGAG
GAGGAGCGGGCGGAGGCTGCGGCGGGAGCCAGGTGGACAGGACTGCTTCCCAGTGCCATTGACCTTCG
AGGCGGCGTGGCCCGAGGCTTGGTGCACACTTCGGGGCCGAAGTGGCGGCCAGCAGTCTACCTGAGGC
CATGCCCTTTACCGTGGGTGACAACCAGACCTACCGAGGCTTCTGGAACCCACCACTTGAGCCTAGGAAG
GCCTATCTCATCTACTTCCAGGCAGCAAGCCACCTGAAGGGGGAGACCCGGCTGAATTGCATCCGCATTG
CCAGGAAAGCTGCCTGCAAGGAAAGCAAGCGGCCCTGGAGGTGTCCCAGAGATCGGAGGAGATGGGGCT
TATCCTGGGCATCTGTGCAGGGGGCTTGTGTCTCATCCTTCTCCTGGGTGCCATCATTGTATCATC
CGCAAAGGGAAGCCGGTGAACATGACCAAGGCCACCGTCAACTACCGCCAGGAGAAGACACACATGATGA
GCGCGTGGACCGCAGCTTACAGACCAGACCCCTGCAGGAGGACGAGCGGCTGGGCCTGTCTTCAT
GGACCCCATGGCTACAGCACCCGGGAGACCAGCGCAGCGGTGGGTCACTGAGGCCAGCAGCCTCCTG
GGGGCTCCCCGAGGCGTCCCTGTGGCCGGAAGGGCTCCCATATCACACGGGCAGCTGCACCTCGCG
TGCGTGTGCGAGACCTTCTGCAGCACATCAACCAGATGAAGACGCGCCAGGGTTACGGCTTCAAGCAGGA
GTATGAGAGCTTCTTTGAAGGCTGGGACGCCACAAAGAAGAAAGACAAGGTCAAGGGCAGCCGGCAGGAG
CCAATGCCTGCCTATGATCGGCACCGAGTGAAGTGCACCCGATGCTGGGAGACCCCAATGCCGACTACA
TTAATGCCAACTACATAGATGGTACCACAGGTCAAACCACTTCATAGCCACTCAAGGGCCGAAGCCTGA
GATGGTCTATGACTTCTGGCGTATGGTGTGGCAGGAGCACTGTCCAGCATCGTCATGATCACCAGCTG
GTGAGGTGAAATGCTCACGGTACTGGCCGGAGGACTCAGACACCTACGGGGACATCAAGATTATGTGCG
TGAAGACAGAGACCCTGGCTGAGTATGTCGTGCCACTTTTCCCTGGAGCGGAGAGGCTACTCTGCCCG
GCACGAGTCCGCCAGTTCACACTTACAGCGTGGCCAGAGCATGGCGTCCCTACCATGCCACGGGGCTG
CTGGCTTTCATCCGGCGCGTGAAGGCCTCCACCCACCTGATGCCGGGCCATTGTCATCCACTGCAGCG
CGGGCACCGGCCGACAGGTTGCTATATCGTCTGGATGTGATGCTGGACATGGCAGAGTGTGAGGGCGT
CGTGGACATTTACAAGTGTGGAAGACTCTCTGCTCCCGCGTGTCAACATGATCCAGACTGAGGAGCAG
TACATCTTCATTCATGATGCAATCCTGGAGGCCTGCCTGTGTGGGGAGACCACCATCCCTGTCAGTGAGT
TCAAGGCCACCTACAAGGAGATGATCCGCATTGATCCTCAGAGTAATTCCTCCAGCTGCGGGAAGAGTT
CCAGACGCTGAACTCGGTACCCCGCCGCTGGACGTGGAGGAGTGCAGCATCGCCCTGTTGCCCGGAAC
CGGACAAGAACCAGCATGGACGTCCTGCCGCCGACCGCTGCCTGCCCTTCTCATCTCCACTGATG
GGGACTCCAACAACATACATTAATGCAGCCCTGACTGACAGCTACACACGGAGTGGGCCCTTCATCGTGAC
CCTGCACCCGCTGCAGAGCACCCAGCCGACTTCTGGCGCTGGTCTACGATTACGGGTGCACCTCCATC
GTCATGCTCAACCAGCTGAACCAGTCCAACCTCCGCTGGCCCTGCCTGCAGTACTGGCCAGAGCCAGGCC
GGCAGCAATATGGCCTCATGGAGGTGGAGTTTATGTCCGGGCACAGCTGATGAAGACTTAGTGGCTCGAGT
CTTCCGGGTGACAGAACTCTCTCGTTGCAGGAGGGGCACCTGCTGGTGGCGCACTTCCAGTTCTGCGC
TGGTCTGCATACCGGGACACCTGACTCCAAGAAGGCCTTCTTGACCTGCTGGCTGAGGTGGACAAGT
GGCAGGCCGAGAGTGGGATGGGCGCACCATCGTGCAGTGCCTAAACGGGGGAGGACGCAGCGGCACCTT
CTGCGCCTGCGCCACGGTCTGGAGATGATCCGCTGCCACAACCTGGTGGAGCTTTTCTTTGCTGCCAAA
ACCCTCCGGAACATAAACCACATGGTGGAGACCATGGATCAGTACCCTTTTGTACGATGTGGCC
TGGAGTACTTGGAGGGCTGGAGTCAAGA

AGCGGACCGACGCTACGCGGCCGCTCGAGCAGAACTCATCTCAGAAGAGGATCTGGCAGCAAATGATATCC
TGGATTACAAGGATGACGACGATAAGGTTTAA

Protein Sequence: >RC230896 representing NM_001195001
Red=Cloning site Green=Tags(s)

MARAQALV LALTFQLCAPETETPAAGCTFEEASDPAVPCEYSQAQYDDFQWEQVRIHPGTRAPADLPHGS
 YLMVNTSQHAPGQRAHVIFQSLSENDTHCVQFSYFLYSRDGHSPGTLGVYVRVNGGPLGSAVWNMTGSHG
 RQWHQAE LAVSTFWPNEYQVLFEALISPDRRGYMLDDILLLSYPCAKAPHF SRLGDVEVNAGQNASFQC
 MAAGRAAE AERFLLQRQSGALVPAAGVRHISHRRFLATFPLAAVSRAEQDLYRCV SQAPRGAGVSNFAEL
 IVKEPPTPIAPPQLLRAGPTYLI IQLNTNSIIGDGPVIRKEIEYRMARGPWAEVHAVSLQTYKLVHLDPD
 TEYEISVLLTRPGDGGTGRPGPLISRTKCAEPMRAPKGLAF AEIQARQLTLQWEPLGYNVTRCHTYTVS
 LCYHYTLGSSHNQTIRECVKTEQGVSRYTIKNLLPYRNVHVRVL TNPEGRKEGKEVTFQTDDEDVPSGIA
 AESLTFTPLEDMIFLKWEEPQEPNGLITQYEISYQSISSDPAVNVPGPRRTISKLRNETYHVFNLHPG
 TTLYFSVRARTGKFGQAALTEITTNISAPSFYADMPSPLESENTITVLLRPAQGRGAPISVYQVIVE
 EERARRLRREPGGQDCFPVPLTFEAALARGLVHYFGAELAASSLPEAMPFTVGDNQTYRGFWNPPLEPRK
 AYLIIYQAASHLKGETRLNCIRIARKAACKESKRPLEVSQRSEEMGLILGICAGGLAVLILLGAIIVII
 RKGKPVNMTKATVNYRQEKTHMMSAVDRSFTDQSTLQEDERLGLSFM DTHGYSTRGDQRSGGVTEASSLL
 GGSPRRPCGRKGSPLYHTGQLHPAVRVADLLQHI NQMKTAEGYGFQEQEYESFFEGWDATKKKDKVKGSRQE
 PMPAYDRHRVKLHPMLGDPNADYINANYIDGYHRSNHF IATQGPKEVYDFWRMVWQEHCSIVMITKL
 VEVKCSRYWPEDSDTYGDIKIMLVKTETLAEYVVRTFALERRGYSARHEVRQFHFTAWPEHGVPYHATGL
 LAFIRRVKASTPPDAGPIVIHCSAGTGRGTCYIVLDVMLDMAECEGVVDIYNCVKTLCSRRVNM IQTEEQ
 YIFIHDAILEACLGETTIPVSEFKATYKEMIRIDPQSNSSQLREEFQTLNSVTPPLDVEECIALLPRN
 RDKNRSMDVLPDRCLPFLISTDGSNNYINAAL TDSYTRSAFIVTLHPLQSTTPDFWRLVYDYGCTSI
 VMLNQLNQSNSAWPCLQYWPEPGRQQYGLMEVEFMSGT ADEDLVARVFRVQNI SRLQEGHLLVRHFQFLR
 WSAYRDT PDKKAF LHL LAEVDKWQAESGDGR TIVHCLNGGGRSGTFCACATVLEMIRCHNLVDVFFAAK
 TLRNYKPNMVE TMDQYHFCYDVALEYLEGLESR

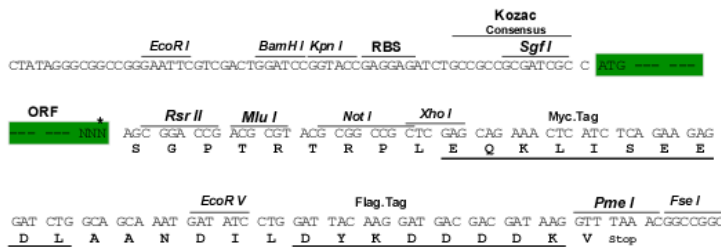
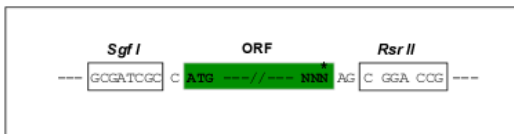
SGPTRTRRLEQKLI SEEDLAANDILDYKDDDDKV

Restriction Sites:

SgfI-RsrII

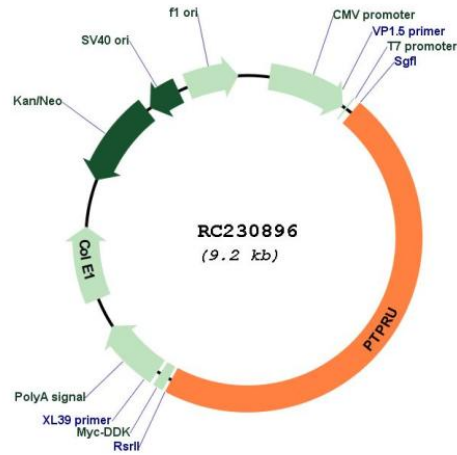
Cloning Scheme:

Cloning sites used for ORF Shuttling:



* The last codon before the Stop codon of the ORF

Plasmid Map:



ACCN: NM_001195001

ORF Size: 4299 bp

OTI Disclaimer: The molecular sequence of this clone aligns with the gene accession number as a point of reference only. However, individual transcript sequences of the same gene can differ through naturally occurring variations (e.g. polymorphisms), each with its own valid existence. This clone is substantially in agreement with the reference, but a complete review of all prevailing variants is recommended prior to use. [More info](#)

OTI Annotation: This clone was engineered to express the complete ORF with an expression tag. Expression varies depending on the nature of the gene.

Components: The ORF clone is ion-exchange column purified and shipped in a 2D barcoded Matrix tube containing 10ug of transfection-ready, dried plasmid DNA (reconstitute with 100 ul of water).

Reconstitution Method:

1. Centrifuge at 5,000xg for 5min.
2. Carefully open the tube and add 100ul of sterile water to dissolve the DNA.
3. Close the tube and incubate for 10 minutes at room temperature.
4. Briefly vortex the tube and then do a quick spin (less than 5000xg) to concentrate the liquid at the bottom.
5. Store the suspended plasmid at -20°C. The DNA is stable for at least one year from date of shipping when stored at -20°C.

RefSeq: [NM_001195001.1](#), [NP_001181930.1](#)

RefSeq ORF: 4302 bp

Locus ID: 10076

UniProt ID: [Q92729](#)

Cytogenetics: 1p35.3

Protein Families: Transmembrane

MW: 161.2 kDa

Gene Summary: The protein encoded by this gene is a member of the protein tyrosine phosphatase (PTP) family. PTPs are known to be signaling molecules that regulate a variety of cellular processes including cell growth, differentiation, mitotic cycle, and oncogenic transformation. This PTP possesses an extracellular region, a single transmembrane region, and two tandem intracellular catalytic domains, and thus represents a receptor-type PTP. The extracellular region contains a meprin-A5 antigen-PTP (MAM) domain, Ig-like and fibronectin type III-like repeats. This PTP was thought to play roles in cell-cell recognition and adhesion. Studies of the similar gene in mice suggested the role of this PTP in early neural development. The expression of this gene was reported to be regulated by phorbol myristate acetate (PMA) or calcium ionophore in Jurkat T lymphoma cells. Alternatively spliced transcript variants have been reported. [provided by RefSeq, Aug 2010]