

## Product datasheet for RC230895

### Claspin (CLSPN) (NM\_001190481) Human Tagged ORF Clone

#### Product data:

Product Type:	Expression Plasmids
Product Name:	Claspin (CLSPN) (NM_001190481) Human Tagged ORF Clone
Tag:	Myc-DDK
Symbol:	Claspin
Mammalian Cell Selection:	Neomycin
Vector:	pCMV6-Entry (PS100001)
E. coli Selection:	Kanamycin (25 ug/mL)
ORF Nucleotide Sequence:	>RC230895 representing NM_001190481 Red=Cloning site Blue=ORF Green=Tags(s)

TTTTGTAATACGACTCACTATAGGGCGGCCGGAATTCGTCGACTGGATCCGGTACCGAGGAGATCTGCC  
GCCCGATCGCC

ATGACAGGCGAGGTGGTCTGAGGTTACCTAGAAATCAATGACCCAAACGTCATTTTACAAGAGGAAG  
CAGATAGTCCTTCAGATAGTGGACAGGGCAGCTATGAAACAATTGGACCCCTTGAGTGAAGGAGATTCAGA  
TGAAGAGATATTTGTAAGTAAGAAGTTGAAAAACAGGAAGGTTCTACAAGACAGTGATCCGAAACAGAG  
GACACAAATGCCTCTCCAGAGAAAACTACCTATGACAGTGCCGAGGAGGAAAAATAAGAGAATTTATATG  
CTGGGAAAAATACAAAAATCAAAAGGATTTACAAAACCTGTGGCAGACAGTGATGAAAGTTACATGGAAAA  
GTCTTTGTATCAGGAAAACTTTGAAGCGCAAGTAAAACCTTGCTTAGAGCTGAGTCTTCAGTCTGGAAC  
TCTACAGACTTTACCACTGACAGAAAGAGTTCCAAAAAGCACATACATGATAAAGAAGAACTGCAGGAA  
AAGCAAAAGTAAAATCAAAAAGAAGACTTGAGAAAAGAGGAGAGAAAAATGGAAAAATTAGACAGCTAAA  
AAAGAAGGAAACAAAAACCAGGAAGATGATGTAGAACAGCCATTTAATGACAGTGGCTGTCTTCTGTG  
GATAAAGACCTTTTTGAAACTGGGTTGGAGGATGAAAATAACTCTCCATTGGAAGATGAAGAGTCATTAG  
AATCAATAAGAGCAGCTGTA AAAACAAGTAAAAAGCACAAGAAAAAGAACCATCTTTGGAGAGTGG  
GGTCCATTCATTTGAGGAAGGAAGTGAATATCAAAAGGAACACGAGGAAGGAAAGAAAGGCAGCCAGA  
TTAAGTAAAGAAGCATTAAAACAACCTGCATAGTGAGACTCAGCGCCTTATTCGAGAGTCTGCACTGAACC  
TTCCATATCATATGCCTGAGAATAAAACCATTCATGATTTCTTCAAACGTAACCCCGGCCCACTTGCCA  
CGGAAATGCCATGGCACTATTGAAGTCATCTAAATATCAGTCAAGCCATCACAAAGAAATCATAGACACT  
GCAAACTACTGAAATGAACAGTGATCACCATAGTAAAGGTTCTGAGCAGACAACAGGTGCAGAAAAATG  
AAGTGGAAACTAATGCACTCCCTGTAGTTTCAAAGGAAACCCAGATCATTACTGGATCAGATGAGTCTTG  
CAGGAAGGATTTGGTAAAAATGAAGAGCTAGAAATTCAGGAGAAACAGAAGCAGAGTGACATTAGACCT  
TCACCTGGGGACAGCTCAGTGTGCAACAGGAATCCAACCTTCTCGGGAACAATCACAGTGAGGAATGTC  
AGGTTGGAGGGCTGTAGCATTTGAACCTCATGCCCTGGAGGGTGAAGGCCCCCAAAATCCAGAAGAAAC  
AGATGAGAAAGTGAAGAGCCTGAGCAGCAAAAATAATCATCAGCAGTTGGGCCACCTGAAAAAGTGAGA  
CGGTTTACTCTGGATAGACTTAAGCAACTGGGAGTAGATGTTTCCATTAACACCGCTAGGTGCTGATG  
AAGATTCTTTGTGATACTTGAACCTGAAACCAACAGAGGTGAAAAGCTTCAGGTGTTAAAAGCTAACT



[View online »](#)

GCAAGAAGCAATGAAACTCCGAAGGTTTGAGGAGCGCCAGAAGCGCCAAGCACTGTTTAAATTAGATAAT  
GAAGATGGGTTTGAGGAAGAGGAGGAGGAAGAGGAAGAAATGACAGATGAGTCTGAGGAAGATGGAGAAG  
AGAAGGTAGAGAAAGAAGAGAAAGAGGAAGAACTAGAGGAAGAGGAGGAGAAAGAAGAGGAGGAGGAAGA  
AGAAGGAAATCAGGAGACTGCAGAAATTCCTTCTTAGTAGTGAAGAAATAGAAACAAAAGATGAAAAAGAA  
ATGGATAAAGAAAATAATGATGGCAGTAGTGAATTTGGCAAGGCAGTTGGCTTCTCTCTGTTCCCAAGT  
CTCTCTCATCAGATTCTACTTTACTTCTGTTTAAGGACAGCTCTCCAAGATGGGTTACTTTCTACTGA  
AGAAAAATCAGAAACAGATGAAACTCAGGCAAGCAGCCTAGCAAACCTGGATGAGGATGATTCATGTTCA  
TTGCTAACAAAGGAGAGCAGCCACAATAGCAGCTTTGAGCTGATTGGCTCCACGATTCCATCCTATCAGC  
CTTGCAACAGACAACAGGCCGTGGGACCAGTTTTTTCCCTACAGCAGGAGGATTCAGATCTCCTTCCCC  
TGGGCTATTTTCGAGCCAGTTTGGTCAGCTCAGCTTCTAAGAGTTCAGGGAACTGTCTGAGCCTTCACTT  
CCCATAGAGGATCCCAGGATCTGTATAACGCCTCCCCAGAGCCTAAGACACTTTTCTAGGAGCAGGAG  
ACTTCCAGTTCTGTTTAGAAGATGACACTCAGAGCCAACCTGTTGGATGCAGATGGGTTCTTAAATGTTAG  
AAACCACAGGAATCAGTACCAAGCTTTGAAGCCTCGATTGCCATTGGCCAGTATGGATGAGAATGCCATG  
GATGCCAACATGGATGAGCTGTTGGATTTGTGTACTGAAAGTTCACATCTCAGGCTGAAAAACATCTAC  
CCAGGAAGAGTGACAAGAAAGAGAACATGGAGGAACTTCTGAACCTTTGTTTCAGGAAAATCACTTCTCA  
GGATGCCTCCACTCCAGCCTCATCAGAGTTAAATAAACAGGAGAAGGAGAGCAGCATGGGTGATCCAATG  
GAAGAAGCACTTGCTCTTTGCTCAGGCTTTTTCCACAGACAAGGAAGAGGAAGACGAGGAGGAGGAAT  
TTGGAGACTTTTCGGCTTGTTCAAATGATAATGAGTTTGTAGTAGTATGAGGATGAACACAGTGACTCTGG  
TAATGATCTGGCACTGGAAGACCATGAAGATGATGATGAAGAAGAACTCTGAAGCGATCTGAGAAGTTG  
AAAAGGCAATGAGGTTGAGGAAATACCTGGAGGATGAGGCAGAGGTGTCAGGAAGTATGTTGGGAAGCG  
AAGATGAGTATGATGGGAAGAAATTGATGAATATGAAGAGGACGTAATTGATGAAGTACTTCTTCTGA  
TGAGGAACTGCAGAGTCAAATCAAGAAAATACACATGAAAATGTTGGATGATGATAAGCGACAGCTA  
CGTTTATACCAAGAGAGGTACCTTGCTGATGGGATCTGCACAGCGATGGTCTGGGCGAATGAGGAAGT  
TTCGATGGAAAAACATAGATGATGCTTCCAGATGGACTTGTTCCACAGAGACTCTGATGATGATCAGAC  
TGAAGAACAGCTTGATGAGTCAGAAGCCAGGTGGAGGAAGGAGCGAATTGAACGAGAGCAGTGGCTTCGG  
GACATGGCACAGCAGGGGAAAATTACAGCTGAAGAAGAAGAAGAAATTGGGGAGGACAGTCACTTATGA  
TACTGGCCAAGAAAGTTACAGCCAAAGCACTGCAGAAGAATGCCAGTCGCCCTATGGTTATTCAGGAATC  
AAAGTCTTTGCTCAGAAATCCTTTTGAAGCCATCAGACCAGGAAGTGTCAACAGGTGAAGACAGGCTCA  
CTGCTAAACCAGCCAAAGCTGTGCTTCCAGAACTGGCTGCTCTCTGACCATAACCCAGTGTCTCTC  
GAAATTCAGAACTTTGTCTTTTATACACTTTTCTCTGTCAAGGCTGAGGCGGCAAAGGAATCGTCTAA  
GTCTCAGGTAAGAAAAGGGTCCATCTTTCATGACTTCTCTTACCTAAGCACCTCAAACAGATGAT  
AGCACTTCAGGATTGACGCGAAGCATCTTCAAATATTTGGAGAGC

ACGCGTACGCGGCGGCTCGAGCAGAACTCATCTCAGAAGAGGATCTGGCAGCAAATGATATCCTGGATT  
ACAAGGATGACGACGATAAGGTTTAA

**Protein Sequence:** >RC230895 representing NM\_001190481  
 Red=Cloning site Green=Tags(s)

```

MTGEVGVSEVHLEINDPNVISQEEADSPSDSGQGSYETIGPLSEGDSDEEIFVSKKLNKRKVLQSDSETE
DTNASPEKTTYDSAEENKENL YAGKNTKIKRIYKTVADSDSESYMEKSL YQENLEAQVKPCLELSLQSGN
STDFTTDRKSSKKHIHDKEGTAGKAKVKSKRRLKEERKMEKIRQLKKKETKNQEDDVEQPFNDSGCLLV
DKDLFETGLEDENNSPLEDEESLESIRA AVKNKVKKHKHKKKEPSLESVHSGVHSEEGSEL SKGTRRERKAAR
LSKEALKQLHSETQRL IRESALNLPYHMPENKTIHDFFKRKP RPTCHGNAMALLKSSKYQSSHHKEIIDT
ANTTEMNSDHHSKGSEQTTGAENEVETNALPVVSKETQIITGSDDESCRKDLVKNEELEIQEKQKQSDIRP
SPGDSSVLQQESNFLGNNHSEECQVGGVAFEPHALEGEQPQNP EETDEKVEEPEQQNKSSAVGPPEKVR
RFTLDRKQLGVDVSIKPRLGAEDSFVILEPETNRGEKLV LKAKLQEA MCLRREERQKRQALFKLDN
EDGFEEEEEEEEEMTDESEEDGEEKVEKEEKEEEL EEEEEEEEEEGNQETA EFLLSSEEIETKDEKE
MDKENNDGSSIEGKAVGFLSVPKSLSSDSTLLLFDSSSKMGYFPTEEKSETDENS GKQPSKLEDDSCS
LLTKESSHNSFELIGSTIPSYQPCNRQTGRGTSFFPTAGGFRSPSPGLFRASLVSSASKSSGKLEP SL
PIEDSQDLYNASPEPKTLFLGAGDFQFCLEDDTQSQLLDADGFLNVRNHRNQYQALKPRLPLASMDENAM
DANMDEL LDLCTGKFTSQAEKHLPRKSDKKNMEELLNLCSGKFTSQDASTPASSELNKQEKESSMGDPM
EEALALCSGSFPDKEEED EEEEFGDFRLVSNDFEFSDEDEHSDSGNDLAL EDHEDDDEEELLKRSEKL
KRQMRRLKYLEDEAEVSGSDVSGSEDEYDGE EIDEYEEDVIDEVLPSDEELQSQIKIHKM TMLDDDKRQL
RLYQERYLADGDLHSDGPGMRMRKFRWKNID DASQMDLFHRSDDDQTEEQ LDESEARWRKERIEREQWLR
DMAQQGKITA EEEEEIGEDSQFMILAKKVTAKALQKNASRPMVIQESKLLRNPF EAIRPGSAQQVKTGS
LLNQPKAVLQKLAALSDHNPSAPRNSRNFVFHTLSPVKA EAAKESKSKSQVKKRGP SFMTSPSPKHLKTDD
STSGLTRSIFKYLE S
  
```

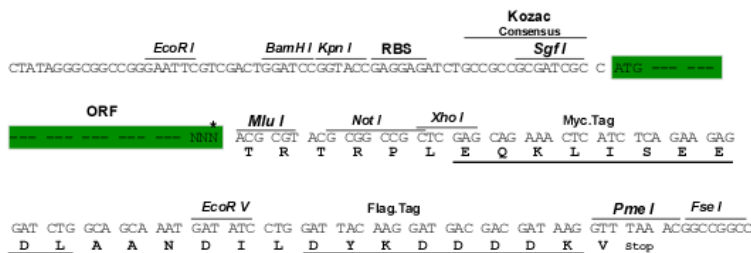
TRTRPLEQKLISEEDLAANDILDYKDDDDKV

**Chromatograms:** [https://cdn.origene.com/chromatograms/mk8106\\_g04.zip](https://cdn.origene.com/chromatograms/mk8106_g04.zip)

**Restriction Sites:** SgfI-MluI

**Cloning Scheme:**

Cloning sites used for ORF Shuttling:



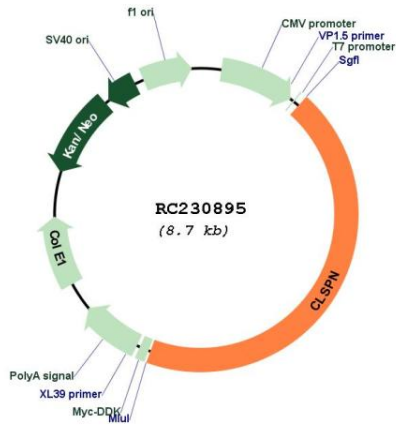
\* The last codon before the Stop codon of the ORF

**ACCN:** NM\_001190481

**ORF Size:** 3825 bp

<b>OTI Disclaimer:</b>	The molecular sequence of this clone aligns with the gene accession number as a point of reference only. However, individual transcript sequences of the same gene can differ through naturally occurring variations (e.g. polymorphisms), each with its own valid existence. This clone is substantially in agreement with the reference, but a complete review of all prevailing variants is recommended prior to use. <a href="#">More info</a>
<b>OTI Annotation:</b>	This clone was engineered to express the complete ORF with an expression tag. Expression varies depending on the nature of the gene.
<b>Components:</b>	The ORF clone is ion-exchange column purified and shipped in a 2D barcoded Matrix tube containing 10ug of transfection-ready, dried plasmid DNA (reconstitute with 100 ul of water).
<b>Reconstitution Method:</b>	<ol style="list-style-type: none"><li>1. Centrifuge at 5,000xg for 5min.</li><li>2. Carefully open the tube and add 100ul of sterile water to dissolve the DNA.</li><li>3. Close the tube and incubate for 10 minutes at room temperature.</li><li>4. Briefly vortex the tube and then do a quick spin (less than 5000xg) to concentrate the liquid at the bottom.</li><li>5. Store the suspended plasmid at -20°C. The DNA is stable for at least one year from date of shipping when stored at -20°C.</li></ol>
<b>RefSeq:</b>	<a href="#">NM_001190481.2</a>
<b>RefSeq ORF:</b>	3828 bp
<b>Locus ID:</b>	63967
<b>UniProt ID:</b>	<a href="#">Q9HAW4</a>
<b>Cytogenetics:</b>	1p34.3
<b>MW:</b>	144.6 kDa
<b>Gene Summary:</b>	The product of this gene is an essential upstream regulator of checkpoint kinase 1 and triggers a checkpoint arrest of the cell cycle in response to replicative stress or DNA damage. The protein is also required for efficient DNA replication during a normal S phase. Multiple transcript variants encoding different isoforms have been found for this gene. [provided by RefSeq, Jun 2010]

Product images:



Circular map for RC230895