

## Product datasheet for RC230813

### ORC4L (ORC4) (NM\_001190881) Human Tagged ORF Clone

#### Product data:

**Product Type:** Expression Plasmids  
**Product Name:** ORC4L (ORC4) (NM\_001190881) Human Tagged ORF Clone  
**Tag:** Myc-DDK  
**Symbol:** ORC4L  
**Synonyms:** ORC4L; ORC4P  
**Mammalian Cell Selection:** Neomycin  
**Vector:** pCMV6-Entry (PS100001)  
**E. coli Selection:** Kanamycin (25 ug/mL)  
**ORF Nucleotide Sequence:** >RC230813 representing NM\_001190881  
Red=Cloning site Blue=ORF Green=Tags(s)

TTTTGTAATACGACTCACTATAGGGCGGCCGGAATTCGTCGACTGGATCCGGTACCGAGGAGATCTGCC  
GCC**CGGATCGCC**

ATGGAATAGAAGAAGTGAGTGAAAATGTATTACAAGTCACTTAAATGGACTGCTGCAGATCAATGACA  
AAATCGCCCTAAAGGAAATCACAAGGCAGTTAAATCTGGAAAATGTAGTTGGAGATAAAGTTTTGGAAAG  
CTTTGCTGAAAACCTTTCATTTCTCTGGAAGCTTTAAAAAAGGTGACCGAACTAGCAGTTGCCAGTG  
ATCTTCATATTAGATGAATTTGATCTTTTTGCTCATCATAAAAACCAAACACTTCTCTATAATCTTTTTG  
ACATTTCTCAGTCTGCACAGACCCCAATAGCAGTTATTGGTCTTACATGTAGATTGGATATTTTGGAACT  
CTTAGAAAAAAGAGTGAAGTCAAGATTTTCTCACCGGCAGATACACTTAATGAATTCATTTGGTTTTCCA  
CAGTATGTTAAAAATTTAAAGAACAGTTATCTCTACCTGCAGAGTTTCCAGACAAGTTTTTGGTGAAG  
AGTGGAATGAAAATGTTCAAGTATCTCTCAGAAGATAGAAGTGTGCAAGAAGTACTACAGAAGCATTTCAA  
TATCAGCAAAAACCTGCGGTCAATTACACATGCTATTGATGCTTAAATCGAGTAAACAGCATCGCAC  
CCATTTATGACTGCCGTAGATCTAATGGAAGCAAGCCAACTGTGTAGCATGGACTCGAAAGCAAATTTG  
TACATGGTCTATCAGTCTGGAAATCTGTCTTATAATAGCAATGAAACATTTAAATGACATCTATGAGGA  
AGAGCCATTTAATTTCAAATGGTCTATAATGAGTTTCAGAAGTTTGTCAAAGGAAAGCACATTTCCGTT  
TATAATTTTGA AAAACCTGTTGTCATGAAGGCTTTTGAACACTGCAGCAATTAGAATTAATAAGCCCA  
TGGAAAGAACTTCAGGAAATTCACAGAGAGAGTACCAGCTGATGAAACTGCTTTTGGATAATACTCAAAT  
TATGAATGCTCTGCAGAAATATCCCAACTGTCCTACAGATGTGAGGCAGTGGCAACATCCTCACTAAGC  
TGGTTA

**ACGCGT**ACGCGGCCGCTCGAGCAGAAACTCATCTCAGAAGAGGATCTGGCAGCAATGATATCCTGGATT  
ACAAGGATGACGACGATAAGGTTAA



[View online »](#)

**Protein Sequence:** >RC230813 representing NM\_001190881  
 Red=Cloning site Green=Tags(s)

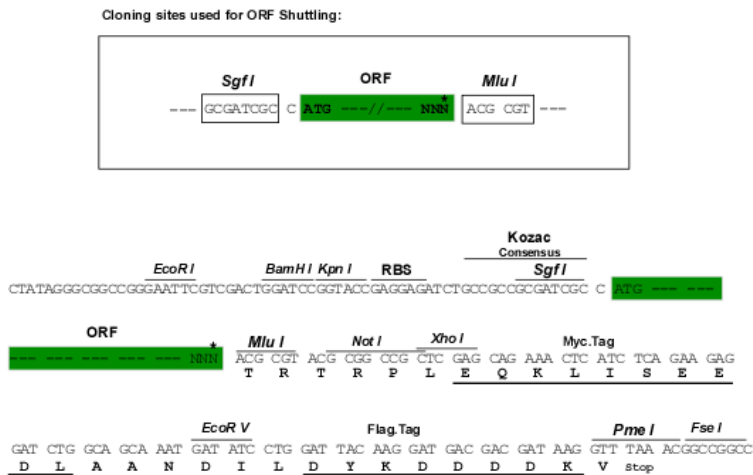
MEIEEVSENVLQVHLNGLLQINDKIALKEITRQLNLENNVGDVFGSFAENLSFLLEALKKGDRTSSCPV  
 IFILDEFDLFAHHKNQTLTYNLFDISQSAQTPIAVIGLTCRLDILELLEKRVKSRFSHRQIHLMNSFGFP  
 QYVKIFKEQLSLPAEFPDKVFAEKWNENVQYLSEDRSVQEVLQKHFNISKNLRSLLHMLLMLALNRVTASH  
 PFMTAVDLMEASQLCSMDSKANIVHGLSVLEICLI IAMKHLNDIYEEEPFNFMVYNEFQK FVQRKAHSV  
 YNFEKPVVMKAFEHLQLELIKPMERTSGNSQREYQLMKLLLDNTQIMNALQKYPNCPDVRQWATSSLS  
 WL

TRTRPLEQKLISEEDLAANDILDYKDDDDKV

**Chromatograms:** [https://cdn.origene.com/chromatograms/ja1557\\_f10.zip](https://cdn.origene.com/chromatograms/ja1557_f10.zip)

**Restriction Sites:** SgfI-MluI

**Cloning Scheme:**



**ACCN:** NM\_001190881

**ORF Size:** 1056 bp

**OTI Disclaimer:** The molecular sequence of this clone aligns with the gene accession number as a point of reference only. However, individual transcript sequences of the same gene can differ through naturally occurring variations (e.g. polymorphisms), each with its own valid existence. This clone is substantially in agreement with the reference, but a complete review of all prevailing variants is recommended prior to use. [More info](#)

**OTI Annotation:** This clone was engineered to express the complete ORF with an expression tag. Expression varies depending on the nature of the gene.

**Components:** The ORF clone is ion-exchange column purified and shipped in a 2D barcoded Matrix tube containing 10ug of transfection-ready, dried plasmid DNA (reconstitute with 100 ul of water).

**Reconstitution Method:**

1. Centrifuge at 5,000xg for 5min.
2. Carefully open the tube and add 100ul of sterile water to dissolve the DNA.
3. Close the tube and incubate for 10 minutes at room temperature.
4. Briefly vortex the tube and then do a quick spin (less than 5000xg) to concentrate the liquid at the bottom.
5. Store the suspended plasmid at -20°C. The DNA is stable for at least one year from date of shipping when stored at -20°C.

**Note:** Plasmids are not sterile. For experiments where strict sterility is required, filtration with 0.22um filter is required.

**RefSeq:** [NM\\_001190881.2](#), [NP\\_001177810.1](#)

**RefSeq ORF:** 1059 bp

**Locus ID:** 5000

**UniProt ID:** [O43929](#)

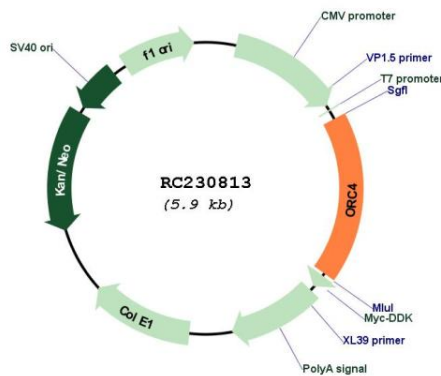
**Cytogenetics:** 2q23.1

**Protein Pathways:** Cell cycle

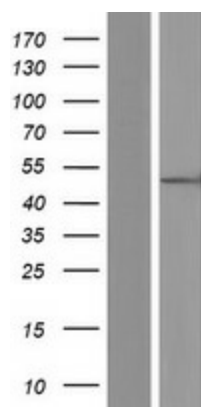
**MW:** 41.3 kDa

**Gene Summary:** The origin recognition complex (ORC) is a highly conserved six subunit protein complex essential for the initiation of the DNA replication in eukaryotic cells. Studies in yeast demonstrated that ORC binds specifically to origins of replication and serves as a platform for the assembly of additional initiation factors such as Cdc6 and Mcm proteins. This gene encodes a subunit of the ORC complex. Several alternatively spliced transcript variants, some of which encode the same protein, have been reported for this gene. [provided by RefSeq, Oct 2010]

### Product images:



Circular map for RC230813



Western blot validation of overexpression lysate (Cat# [LY433812]) using anti-DDK antibody (Cat# [TA50011-100]). Left: Cell lysates from untransfected HEK293T cells; Right: Cell lysates from HEK293T cells transfected with RC230813 using transfection reagent MegaTran 2.0 (Cat# [TT210002]).