

## Product datasheet for RC230810

### HSDL2 (NM\_001195822) Human Tagged ORF Clone

#### Product data:

Product Type:	Expression Plasmids
Product Name:	HSDL2 (NM_001195822) Human Tagged ORF Clone
Tag:	Myc-DDK
Symbol:	HSDL2
Synonyms:	C9orf99; SDR13C1
Mammalian Cell Selection:	Neomycin
Vector:	pCMV6-Entry (PS100001)
E. coli Selection:	Kanamycin (25 ug/mL)
ORF Nucleotide Sequence:	>RC230810 representing NM_001195822 Red=Cloning site Blue=ORF Green=Tags(s)

TTTTGTAATACGACTCACTATAGGGCGGCCGGAATTCGTCGACTGGATCCGGTACCGAGGAGATCTGCC  
GCC**CGATCGCC**

ATGTTACCCAACACCGGGAGGCTGGCAGGATGTACAGTTTTTATCACAGGTGCAAGCCGTGGCATTGGCA  
AAGCTATTGCATTGAAAGCAGCAAAGGATGGAGCAAATATTGTTATTGCTGCAAAGACCGCCAGCCACA  
TCCAAACTTCTAGGCACAATCTATACTGCTGCTGAAGAAATTGAAGCAGTTGGAGGAAAGGCCTTGCCA  
TGTATTGTTGATGTGAGAGATGAACAGCAGATCAGTGTGCAGTGGAGAAAGCCATCAAGAAATTTGGAG  
CTTATACCATTGCTAAGTATGGTATGTCTATGTATGTGCTTGGAAATGGCAGAAGAATTTAAAGGTGAAAT  
TGCAGTCAATGCATTATGGCCTAAAACAGCCATACACACTGCTGCTATGGATATGCTGGGAGGACCTGGT  
ATCGAAAGCCAGTGTAGAAAAGTTGATATCATTGCAGATGCAGCATATCCATTTTCCAAAAGCCAAAAA  
GTTTTACTGGCAACTTTGTCAATTGATGAAAATATCTTAAAAGAAGAAGGAATAGAAAATTTTGACGTTTA  
TGCAATTAACCAGGTCACTCCTTTGCAACCAGATTTCTTCTTAGATGAATACCCAGAAGCAGTTAGCAAG  
AAAGTGAATCAACTGGTGTCTTCCAGAATCAAAGAAGAGAACTGCAGCTGCAACCAAAACCACGTT  
CTGGAGCTGTGGAAGAACATTTAGAATTGTTAAGGACTCTCTCAGTGATGATGTTGTTAAAGCCACTCA  
AGCAATCTATCTGTTTGAACCTCCGGTGAAGATGGTGGCACGTGGTTTCTTGATCTGAAAAGCAAGGGT  
GGGAATGTCGGATATGGAGAGCCTTCTGATCAGGCAGATGTGGTATGAGTATGACTACTGATGACTTTG  
TAAAAATGTTTTTCAGGGAACTAAAACCAACAATGGCATTTCATGTCAGGGAAATTGAAGATTAAGGTAA  
CATGGCCCTAGCAATCAATTGGAGAAGCTAATGAATCAGATGAATGCCAGACTG

**ACGCGT**ACGCGGCCGCTCGAGCAGAACTCATCTCAGAAGAGGATCTGGCAGCAAATGATATCCTGGATT  
ACAAGGATGACGACGATAAGGTTTAA



[View online »](#)

**Protein Sequence:** >RC230810 representing NM\_001195822  
Red=Cloning site Green=Tags(s)

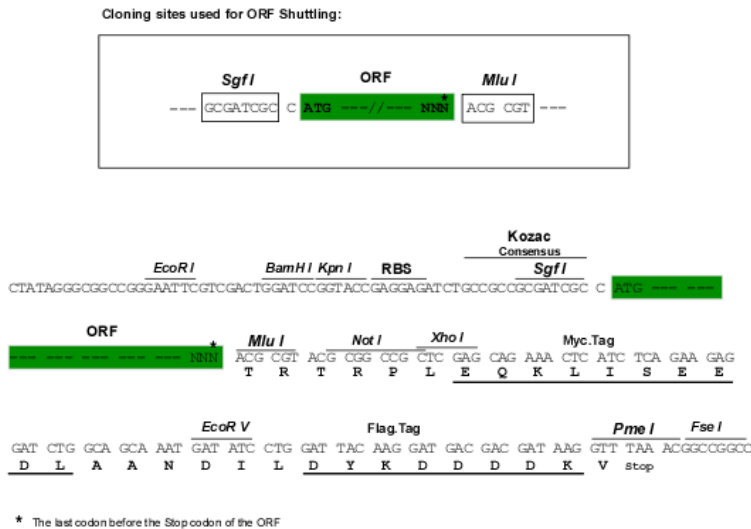
MLPNTGRLAGCTVFITGASRGIGKAIALKAAKDGANIVIAAKTAQPHPKLLGTIYTAAEEIEAVGGKALP  
 CIVDVRDEQQISA AVEKAIKKFGAYTIAKYGMSMYVLGMAEEFKGEI AVNALWPKTAIHTAAMDMLGGPG  
 IESQCRKVDIIADAAYSIFQPKPSFTGNFVIDENILKEEGIENFDVYAIKPGHPLQPDFFLDEYPEAVSK  
 KVESTGAVPEFKEEKLQLQPKPRSGAVEETFRI VKDSLDDVVKATQAIYLFELSGEDGGTWFLDLKSKG  
 GNVGYGEPDQADVVMSTTDDFVKMFSGKLP TMAFMSGKLIKGNMALAIKLEKLMNQMNARL

TRTRPLEQKLISEEDLAANDILDYKDDDDKV

**Chromatograms:** [https://cdn.origene.com/chromatograms/ja1551\\_e06.zip](https://cdn.origene.com/chromatograms/ja1551_e06.zip)

**Restriction Sites:** SgfI-MluI

**Cloning Scheme:**



**ACCN:** NM\_001195822

**ORF Size:** 1035 bp

**OTI Disclaimer:** The molecular sequence of this clone aligns with the gene accession number as a point of reference only. However, individual transcript sequences of the same gene can differ through naturally occurring variations (e.g. polymorphisms), each with its own valid existence. This clone is substantially in agreement with the reference, but a complete review of all prevailing variants is recommended prior to use. [More info](#)

**OTI Annotation:** This clone was engineered to express the complete ORF with an expression tag. Expression varies depending on the nature of the gene.

**Components:** The ORF clone is ion-exchange column purified and shipped in a 2D barcoded Matrix tube containing 10ug of transfection-ready, dried plasmid DNA (reconstitute with 100 ul of water).

**Reconstitution Method:**

1. Centrifuge at 5,000xg for 5min.
2. Carefully open the tube and add 100ul of sterile water to dissolve the DNA.
3. Close the tube and incubate for 10 minutes at room temperature.
4. Briefly vortex the tube and then do a quick spin (less than 5000xg) to concentrate the liquid at the bottom.
5. Store the suspended plasmid at -20°C. The DNA is stable for at least one year from date of shipping when stored at -20°C.

**RefSeq:** [NM\\_001195822.1](#), [NP\\_001182751.1](#)

**RefSeq ORF:** 1038 bp

**Locus ID:** 84263

**UniProt ID:** [Q6YN16](#)

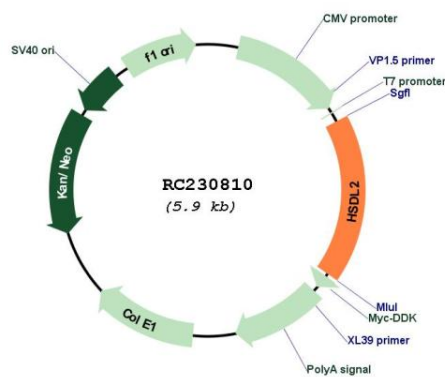
**Cytogenetics:** 9q32

**Protein Families:** Druggable Genome

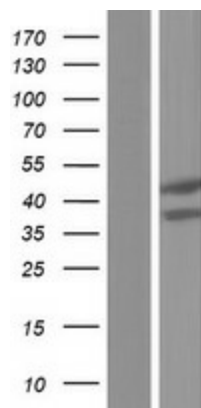
**MW:** 37.8 kDa

**Gene Summary:** Has apparently no steroid dehydrogenase activity.[UniProtKB/Swiss-Prot Function]

**Product images:**



Circular map for RC230810



Western blot validation of overexpression lysate (Cat# [LY433809]) using anti-DDK antibody (Cat# [TA50011-100]). Left: Cell lysates from untransfected HEK293T cells; Right: Cell lysates from HEK293T cells transfected with RC230810 using transfection reagent MegaTran 2.0 (Cat# [TT210002]).