

## Product datasheet for RC230793

### RPH3AL (NM\_001190413) Human Tagged ORF Clone

#### Product data:

Product Type:	Expression Plasmids
Product Name:	RPH3AL (NM_001190413) Human Tagged ORF Clone
Tag:	Myc-DDK
Symbol:	RPH3AL
Synonyms:	NOC2
Mammalian Cell Selection:	Neomycin
Vector:	pCMV6-Entry (PS100001)
E. coli Selection:	Kanamycin (25 ug/mL)
ORF Nucleotide Sequence:	>RC230793 representing NM_001190413 Red=Cloning site Blue=ORF Green=Tags(s)

TTTTGTAATACGACTCACTATAGGGCGGCCGGAATTCGTCGACTGGATCCGGTACCGAGGAGATCTGCC  
GCC**CGATCGCC**

ATGGCCGACACCATCTTCGGCAGCGGGAATGATCAGTGGGTTTGCCCAATGACCGGCAGCTTGCCCTTC  
GAGCCAAGCTGCAGACGGGCTGGTCCGTGCACACCTACCAGACGGAGAAGCAGAGGAGGAAGCAGCACCT  
CAGCCCGCGGAGGTGGAGGCCATCCTGCAGGTCATCCAGAGGGCAGAGCGGCTCGAGCTCTGGAGCAG  
CAGAGAATCGGGCGGCTGGTGGAGCGGCTGGAGACCATGAGGCGGAATGTGATGGGGAACGGCCTGTCCC  
AGTGTCTGCTCTGCGGGAGGTGCTGGGCTTCTGGGCAGCTCGTCGGTGTCTGCAAAGACTGCAGGAA  
GGTCTGGAAGAGGTCGGGGCCCTGGTTCTACAAAGGGCTCCCAAGTATATCTTGCCCTGAAGACCCCT  
GGCCGAGCTGATGACCCCACTTCCGACCTTTGCCACGGAACCGGCAGAGCGAGAGCCAGAAAGCTCTG  
AGACCAGCCGATCTACACGTGGGCCGAGGAAGAGTGGTTTCCAGTGACAGTGACAGTGACTCGGATCT  
TAGCTCCTCCAGCCTAGAGGACAGACTCCCATCCACTGGGGTCAGGGACCGGAAAGGCGACAAACCTGG  
AAGGAGTCAGGTGGCAGCGTGGAGGCCCCAGGATGGGGTTCACCCACCGCCGGGCCACCTCTCTGGGT  
GCCAGAGCAGCTGGCCAGTGGTGGAGACGGGACAGGCTCTGCTGACCCGCCAGGGGACCCCGCCCGG  
GCTGACCCGAAGGGCCCCGTTAAAAGACACACCTGGACGAGCCCCGCTGCTGACGCAGCTCCAGCAGGC  
CCCTCCAGCTGCCTGGGC

**ACGCGT**ACGCGGCCGCTCGAGCAGAAACTCATCTCAGAAGAGGATCTGGCAGCAAATGATATCTGGATT  
ACAAGGATGACGACGATAAGGTTAA



[View online »](#)

**Protein Sequence:** >RC230793 representing NM\_001190413  
Red=Cloning site Green=Tags(s)

MADTIFGSGNDQWVCPNDRQLALRAKLQTGWSVHTYQTEKQRRKQHLSPAEEVAILQVIQRAERLDVLEQ  
 QRIGRLVERLETMRNVMGNGLSQCLLCGEVLGFLGSSSVFCKDCRKYVWKRSGAWFYKGLPKYILPLKTP  
 GRADDPHFRPLPTEPAEREPRSSSETSRIYTWARGRVVSSDSDSDSDLSSSSLEDRLPSTGVRDRKGDKPW  
 KESGGSVEAPRMGFTHPPGHLGCGSSLASGETGTGSADPPGGPRPGLTRRAPVKDTPGRAPAADAAPAG  
 PSSCLG

TRTRPLEQKLISEEDLAANDILDYKDDDDKV

**Chromatograms:** [https://cdn.origene.com/chromatograms/ja1515\\_c08.zip](https://cdn.origene.com/chromatograms/ja1515_c08.zip)

**Restriction Sites:** SgfI-MluI

**Cloning Scheme:**



**ACCN:** NM\_001190413

**ORF Size:** 858 bp

**OTI Disclaimer:** The molecular sequence of this clone aligns with the gene accession number as a point of reference only. However, individual transcript sequences of the same gene can differ through naturally occurring variations (e.g. polymorphisms), each with its own valid existence. This clone is substantially in agreement with the reference, but a complete review of all prevailing variants is recommended prior to use. [More info](#)

**OTI Annotation:** This clone was engineered to express the complete ORF with an expression tag. Expression varies depending on the nature of the gene.

**Components:** The ORF clone is ion-exchange column purified and shipped in a 2D barcoded Matrix tube containing 10ug of transfection-ready, dried plasmid DNA (reconstitute with 100 ul of water).

**Reconstitution Method:**

1. Centrifuge at 5,000xg for 5min.
2. Carefully open the tube and add 100ul of sterile water to dissolve the DNA.
3. Close the tube and incubate for 10 minutes at room temperature.
4. Briefly vortex the tube and then do a quick spin (less than 5000xg) to concentrate the liquid at the bottom.
5. Store the suspended plasmid at -20°C. The DNA is stable for at least one year from date of shipping when stored at -20°C.

**RefSeq:** [NM\\_001190413.2](#)

**RefSeq ORF:** 861 bp

**Locus ID:** 9501

**UniProt ID:** [Q9UNE2](#)

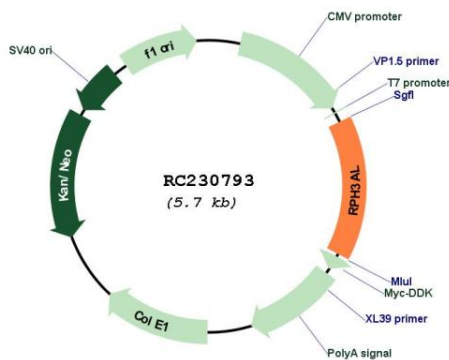
**Cytogenetics:** 17p13.3

**Protein Families:** Secreted Protein

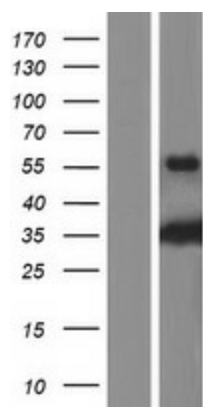
**MW:** 31.6 kDa

**Gene Summary:** The protein encoded by this gene plays a direct regulatory role in calcium-ion-dependent exocytosis in both endocrine and exocrine cells and plays a key role in insulin secretion by pancreatic cells. This gene is likely a tumor suppressor. Alternative splicing results in multiple transcript variants encoding distinct isoforms. [provided by RefSeq, Jun 2010]

### Product images:



Circular map for RC230793



Western blot validation of overexpression lysate (Cat# [LY433792]) using anti-DDK antibody (Cat# [TA50011-100]). Left: Cell lysates from untransfected HEK293T cells; Right: Cell lysates from HEK293T cells transfected with RC230793 using transfection reagent MegaTran 2.0 (Cat# [TT210002]).