

## Product datasheet for RC230753L1

### CHD8 (NM\_001170629) Human Tagged Lenti ORF Clone

#### Product data:

Product Type:	Expression Plasmids
Product Name:	CHD8 (NM_001170629) Human Tagged Lenti ORF Clone
Tag:	Myc-DDK
Symbol:	CHD8
Synonyms:	AUTS18; HELSNF1
Mammalian Cell Selection:	None
Vector:	pLenti-C-Myc-DDK (PS100064)
E. coli Selection:	Chloramphenicol (34 ug/mL)
ORF Nucleotide Sequence:	The ORF insert of this clone is exactly the same as(RC230753).
Restriction Sites:	SgfI-MluI
Cloning Scheme:	

Cloning sites used for ORF Shuttling:



\* The last codon before the Stop codon of the ORF.

ACCN:	NM_001170629
ORF Size:	7743 bp



[View online »](#)

**OTI Disclaimer:** Due to the inherent nature of this plasmid, standard methods to replicate additional amounts of DNA in E. coli are highly likely to result in mutations and/or rearrangements. Therefore, OriGene does not guarantee the capability to replicate this plasmid DNA. Additional amounts of DNA can be purchased from OriGene with batch-specific, full-sequence verification at a reduced cost. Please contact our customer care team at [custsupport@origene.com](mailto:custsupport@origene.com) or by calling 301.340.3188 option 3 for pricing and delivery.

The molecular sequence of this clone aligns with the gene accession number as a point of reference only. However, individual transcript sequences of the same gene can differ through naturally occurring variations (e.g. polymorphisms), each with its own valid existence. This clone is substantially in agreement with the reference, but a complete review of all prevailing variants is recommended prior to use. [More info](#)

**OTI Annotation:** This clone was engineered to express the complete ORF with an expression tag. Expression varies depending on the nature of the gene.

**Components:** The ORF clone is ion-exchange column purified and shipped in a 2D barcoded Matrix tube containing 10ug of transfection-ready, dried plasmid DNA (reconstitute with 100 ul of water).

**Reconstitution Method:**

1. Centrifuge at 5,000xg for 5min.
2. Carefully open the tube and add 100ul of sterile water to dissolve the DNA.
3. Close the tube and incubate for 10 minutes at room temperature.
4. Briefly vortex the tube and then do a quick spin (less than 5000xg) to concentrate the liquid at the bottom.
5. Store the suspended plasmid at -20°C. The DNA is stable for at least one year from date of shipping when stored at -20°C.

**RefSeq:** [NM\\_001170629.1](#)

**RefSeq ORF:** 7746 bp

**Locus ID:** 57680

**UniProt ID:** [Q9HCK8](#)

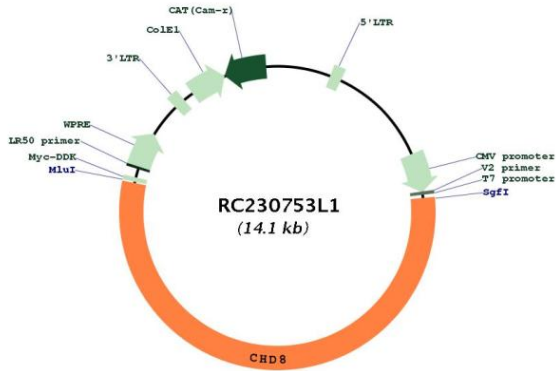
**Cytogenetics:** 14q11.2

**Protein Pathways:** Wnt signaling pathway

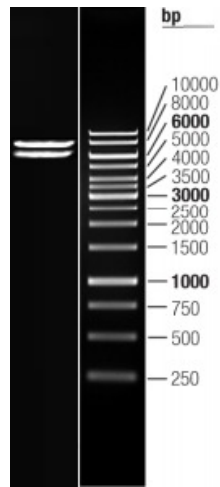
**MW:** 291 kDa

**Gene Summary:** This gene encodes a member of the chromodomain-helicase-DNA binding protein family, which is characterized by a SNF2-like domain and two chromatin organization modifier domains. The encoded protein also contains brahma and kismet domains, which are common to the subfamily of chromodomain-helicase-DNA binding proteins to which this protein belongs. This gene has been shown to function in several processes that include transcriptional regulation, epigenetic remodeling, promotion of cell proliferation, and regulation of RNA synthesis. Allelic variants of this gene are associated with autism spectrum disorder. Alternative splicing results in multiple transcript variants. [provided by RefSeq, Dec 2016]

Product images:



Circular map for RC230753L1



Double digestion of RC230753L1 using SgfI and MluI