

Product datasheet for **RC230744**

FREM3 (NM_001168235) Human Tagged ORF Clone

Product data:

Product Type:	Expression Plasmids
Product Name:	FREM3 (NM_001168235) Human Tagged ORF Clone
Tag:	Myc-DDK
Symbol:	FREM3
Mammalian Cell Selection:	Neomycin
Vector:	pCMV6-Entry (PS100001)
E. coli Selection:	Kanamycin (25 ug/mL)
ORF Nucleotide Sequence:	>RC230744 representing NM_001168235 Red=Cloning site Blue=ORF Green=Tags(s)

TTTTGTAATACGACTCACTATAGGGCGGCCGGGAATTCGTCGACTGGATCCGGTACCGAGGAGATCTGCC
GCC**CGATCGCC**

ATGGCGGGGGCTTCTCGGCACCCGACTGGGACGCCCGGAGCTCCTTGTGGCGCTCGCCTGCCTGCTCT
TGAGTCGCCCCGCGCTGCAGGGACGGGCATCCTCACTTGGGACCGAGCCCGACCCGGCGCTTTACCTGCC
CGCCCCGGGTGCGCTTGACGGCACTCGCCCCGACGGCCCCAGCGTGCTGATTGCCAACCTGGACTCCGG
GTGCCCCGGGTGCTTCCCTTTGGCTCGACCCGCTCCGGGATCTGGTGATTGGAGTGCAGCCGGGGACC
GGTGCAGAGTACGGTACTGGACGCCCTGCCCGGCTCAAGGGCGCGCTCTCCCCGCGCCCTTCCCTG
CACCTTCCGGGCCCGCAAGTCCAGTACACTCACTTCCGGCTCCACAGCCCGGACGCGCCCGGGTGCTG
CTGCAGCTGCGCTACGACGCCCGACTCACACTCTGGTGCTGCCCTTACGCTGGCGGTGGACTTGGTCT
TCTCCAGCTGGAGCTGGTGACGCGTAACAGGCCCTTGGTAGTGGAGAAGCTGCGAAGCTGGAGCCGCGC
CATAGACAGGAGAGTGTGGACTTCGCCTCCCTGAAGTCTGGAGCCACGGCCACCCGAGGTGCCGGCTT
ACCCCACTTCTCAGGAGACGGCCCCCTGCCAAGTACGGGCGCTTGGTGGACGCGGTGGGGGCCCTC
TCCCCAGGGCAAGGGCGTAGACTGTGAGGCTTCCCTCCGTGCTGGGGTGCCTATCAGCACACAGCCAC
CTCCTCGCCCAACCGTACTACGTGCCATGATGGTGGAGCTGCTGGGGCTGAGGGCAAGACGCTGGG
TCCGCGGTGTGCTGGTCCGCGAGCACTCCAGCTGCTCGTGAGGATCCGCGCGGAGCCGAGAACACAC
CGCCAGGCCAGCTTATGGCCACGATGATGATGGAGGTGGATCCACTGGTGCTGACAGCCCTGACGCC
TGACGCACTGGCCGCGGAGGACGTGAGTACAGCCCTGGTGACCTGGTGTCAACATTCTGAACGCCCC
ACTCACCCACAGGGCACCCGGGCAACAGGGTACGTGGTACGACCCGACGACCCTTAGGGCTTCCAG
TCTCCTTCTTACCCAGCAGGAGCTGAGGGAGCTGAAGATTGCCTATCAGCCCCCTGCAGAGAATCCCA
TGGGGAGCGCCTTTTACGCTGGAGCTGGAGGTGGTGGACGGAGACGGCGCCCTCAGACCCCTTTGCC
TTCATGGTGACAGTGAATCCAATGAATACTCTGGTCCCAGTGGTAGCCATAACAGGGGACTTGTGCTTT
TTGAAGTCAAGGCCCTTGTCCAGCACCCACAGCATTCTATCAGTGATAAAGATAACCTGGAAGA
GGTGAAAATGGCTGCAGTCAGGGCTTGGACATGGGCAGCTGGTGGTGGTGGTGGTGGTGGTGGTGGT
AAGTATTTACACACAGCGACCTGGCAGCAGGGGAGTGGTGTATCAGCATGATGGCAGCAACACTACA
GTGACAATATCATCTCCGGATGGAGGACGGGCACCACCAAGTGGACTTCTCTTCCCTCACCATCCT



[View online »](#)

ACCTGTGGATGATGAACCACCAATGGTCAATACTAACACAGGACTCTCACTCACTGAAGGGCAGGTGGTC
 CAGATCTCTCCCTTTGTACTGAGTGCTACTGATATTGACTCTGAGGACTCAACCATCCACTTTGTGCTGG
 AGAACCAGCCCCTAAAAGGAAATGAGGAAGAGCCTCAGTGGGAGTTGGCCCCTGGTTCCTCCCACTCAGG
 CCACTACCTGGGGACCTGTTGCTGCAGCAGGCTGAACACTCTCTCACTGAAGATGAAGACTGGCAC
 TACATGGAAAAGGAAGGGCTTTATGAGAAAGTGGTGACTGAGTGGCTACAGAGAGACATAATGGAAGGGA
 GACTCTTCTACCGCCATCTTGGACCACACAGCCCTCAATCTGTAATGGTCCAGCTGGCTTTCCATGTGCA
 GGATGACCATGACCCACCAATCTCTCCAAACAGCACATTTTACCATCAAGTCCAACCTCACTCACTTCC
 CTGAGTCCACAGCTGTATCCAGGAACACTAGAAATGACTGTACAAGAATACCAACTCACTCACTTCC
 AGAAGAATTTCTCCGATACATTGACCAGGACTCTGATGACCAGAACCTATGGTACACCCTACTGCACT
 CCCGACTGACACAGATGGCAACCACCAAGTCCGGGCTGGAGAAATTGTGCTCACTGATTCACCAGACACA
 CTCATCATGCACTTTACCCAAGCCAGGTAATCAGCATAAAGTTGCCTACCAGCCTCCACAGAAATTGG
 GTATTGCACCACGGTGTGCAGTTTACTTACCAGGTGGAAGATGCTGCAGGCAATAGCGTGCCAGGCAC
 ATTCACATTATTCCTGCAACCTGTGGACAACCAGCCCCAGAAGTCAACACAGAGGCTTTGCTATCTTA
 GAGGGAGGCAGCTTTAACCTCAGCAGTAATGAGCTGCATGTTACAGACCCAGACACAGACATTGACCAAA
 TTGTCTTCATATTAGTCCGGGTCCTCAACATGGACACTTGCAGTACTTTAAAAGATGTATGGTCCCAGG
 GGAATCTTTCATGCAAGCTGATGTTATTAACGGGAGTGTCTTACCAGCATGGCAGAGACCAGACGACT
 ACCAGTGACACTTTCATCTGGAAGTAAGTGTGGGGTGACCATATACCATCACCATCCCAATTTCTG
 TGCATCCCAATGTGGTAACAGAAGTCTAGGATCTCTCTCAGAAGTAGTTCATTATTGGATGTTTCTAT
 AGACGTA TAGAGAAATAAGCCACTGAAATTACCATGGGTGCATCCATGGCAAAAAGGAAGGATGTAGGT
 GACTTGATGCTGTCTTTCATTGTAAAGGACAGCCCCAACTGGGCACTATTCTGGTAAATGGTTTGGCCA
 CAGAACGATTCACCAAGAGGATCTCATCAATGGGAGAGTAGCCTATGCCCACTGCAGGTGAAGTTGG
 TTTTCAAAGCAGCAGATGCCTCAGCCTCATCTCTCCAAAGATTCTACCAATGGGTAGTGGGGAAT
 AGCATAATAGAGAAAGTACAGTACAAGTAACCTGTGCTGCCTGTGGACAATGTGGGACCCAAAGTCTTCG
 TCGGGGAGTCTTCAATTGTCTATGAAGGTGAGAAGAACTCCTTGACCTTACAACATCTCCATGTTGAAGA
 TGTGGACTCATCAAGATGAACTCCTCTGCACAGTGACTAGTCAGCCAGCCTCTGGCTACCTGGAAAAG
 ATTGCATCAGCTCCTGGTTCAAAAATGTCCAGTCTGGTAGCCCTATCAGTGCTTCTCCCTCAGAGATA
 TCCAAGTGAGGCATATCAATTATGTACAGAGTATTACAAGGGAGTAGAGCCACAAGAGGACCAATTAC
 CTTTTATTGCTCTGATGGCATCAACTTCTCCCAATGTCTTCTCCCTATAATCATCTACCCACCAAT
 GATGAGCAGCCTAACTTTTTGCCCATGAGTTAAGGTA TAGAGGGATGAGCCTGGTCATAGACACCC
 AGCTGCTTAATGGAGCAGATGCTGACCTGCCACCAATGAGCTCCACTTCAACTCACAGCCCTCCCTCG
 GCATGGACGAATCATACAGCAGCTGGCTACAGGCAGCCAGCCATCCACAGCTTACCCTCAAGGAGATC
 CAGGAGGCTCCACCATTGTGTATGAGCATGATGACTCAGAGACAAAAGAGGACAGTTTTGAGGTCTGGC
 TGAGTGACGGCAAGCACACAACCCACAGGAAGGTACCCATTGTAGTGACCCTAGTGGATGATGAACTCC
 TCACCTGACTGTCAACAATGGGCTGAAGGTAGAGAAAAGGACACTCTGAGATCATCAAAAATCGGATCCTC
 AAGGCCACAGATCTTGACTCAGATGATAAAAGCCTCAGTTTTGTCTCCATTCTGGGCTCAACAAGGGC
 TTCTACAGAGGCTGAGAAAACCCAGAGGAGAAGTGAGGAACAATCTTACTCTGGGAATGAACTTTACCCA
 GGATGAGATTAACAGAGGCTCATCTGCTATATCCACACAGGCCAAGAAGGGATTGTTGACATTATCAAG
 TTTGATGTTACTGATGGGTTAACACTTTGACAGACCACTACTTCTATGTCACCATTTGGCAACTTAGACA
 CGCTTCTCCCTGAGGTAATCAGCAAAAGGATCACCTTGATAGAAGGTGCCAGAGTGACCCTTACCAACAA
 TCTGCTTACCAACAGTGACATCAACAGCTCTGATGAACATCACTTTAGCATTACACGGGCTCCAAGCCTG
 GGTCACTTAGAAAAGTTCTGACTATGCTGGGAACCCATTGCCTCTTCACTCAACTTCAATTGGCTAGCA
 AAAAAATATCCTATGTCCATACTTCAAATGATGAGAAAAGATGGACAGCTTCGAATTTCAAGTGATCGG
 CGAACTTACCCTGTGTTGAGAACCTTCAAGATCTTCACTGATGTGGATAATAAGAAACCTATCTTG
 ACCATCCATAGACTAACACTACAGAAAGAGGATAGCCAAGTACTGACTCTCCTTGAGTTGACAGTGGAAAG
 ACAGTGATACCCAGATGACCTTATTCTTTACCATACCCAGGTCCCATGCATGGCAAGATTTTGTA
 CAATGGTAGCCGTCCTGACCCTTCCACCAAGCAAGACCTGAACAAGAACCTGATTAGCTACAAGCAT
 GACGGCAGTGAGACCACTGAAGATAGTTTCTCCTTGACTGTGACAGACGGCACTCACACTGATTTCTATG
 TCCTACCAGACTGCCCTGGCGACACAAAACCTCAAGTAATGAGGGTCCAGATAAGATCATTAGACAA
 TAGGCTTCCCCAGATTACTACCAACAGGGGTGCCCCAGCCTTGAAGCGCCTTCACTGGACACATGGGC
 TTCTGATTACCAGCAAGTCTCTGAAGGCAGAAGATCAGGACAGTCCCCACAGGCTTCTGAAGTATAAAG
 TGACCAGAGGACCAGAGCATGGCTTCAATTAACAACTGGCCTTGGAAACAGAGCACTCGAGTGTTTAC
 ACAAGCTGACATTGATGAGATGAAGATCCTATGTCTTGAATGAGGGCAGCAACGCATCAAAGGACATC

TTCTATTTCTCTGTTGAAGACAATGGAGGAAATAAACTAACAAATCAGCCTTTCCATCTAAACTGGGCTT
GGATTTGTTTGGAGAAAGAGTACTACATTGTGGATGAAGATTCCACATTCTTAGAAGTGACCCTTACACG
CAGAGGATACCTTGGAGAAACATCATTTATCAGCATTGGTACCAAAGATGAAACTGCAAAAAAGACAAA
GATTTCAAATGGAAGACCAATAAACAGATCCAGTTCATCCTGGACAGACTACAGCCACATGGAGGGTGA
GAATTACCTGACAATGAATATGAGACTTCAGAGACCTCCAGATCATTCTGTCTGAACCTCTCATGGC
TGTACTGGAGTTCCAGAAATGGCAACGGTTGAAATTGTAGACCCTGGAGATGAATCAACAGTTTATATT
CCAGAGGCGGAATACAAAATAGAAGAGGACATTGGGGAACTTTTGATTCCAGTAAGACGATCTGGAGATG
CAAGCCAGGAACTAATCGTCATTTGCTCCACACGTCAAGGTTCTGCCACAGGCACGATTTCTCCACAGT
GTTATTCTCTGATTACATCTCACGTCCAGAAGACCACACCAGCATCCTCCACTTTGACAAGAATGAGACA
CAGAAGACCTGCCAGGTCTGATCATTGATGACTCCCTTTATGAAGAGGAGGAATCCTTCAGCGTTTCAC
TTAGGCTGCCAGTGGGAGGACAGCTGGGAGCCAGATTCCCACCACTAAGGTGACTATTCTGGCTGATCG
TTATGATGAACCTGTCTGCACTTTGGGGATGCTGAATATCACGTCAATGAAAGTGCTCGCTACGTGGAG
GTTTGTGTTTGGAGAAGAGGCACTGATCTTTCCAACCATCATCCATCGCCGTGCGCTCCAGAAAGTCAG
AGCAGGAGTCAGCAGAAGCTGGAACAGATTATGTTGGTATCAGCCGAAACCTGGACTTTGCTCCAGGCGT
GCGCATGCAGACATTC AAGTGACCATCCTTGATGACCTGGGACAGCCTACCTTGAAGGCCAGAGAAG
TTTGAATTA CTTCAGATGCCTATGGGTGCAGTGCTTGGAGAACCAAATAAACTACCATTTTCATCG
AGGACACCATCACGGACTGTAAGCAGAGTGCTTGTAGTTCCTTTGAT

AGCGGACCGACGCGTACGCGGCCGCTCGAGCAGAACTCATCTCAGAAGAGGATCTGGCAGCAAATGATATCC
TGGATTACAAGGATGACGACGATAAGGTTTAA

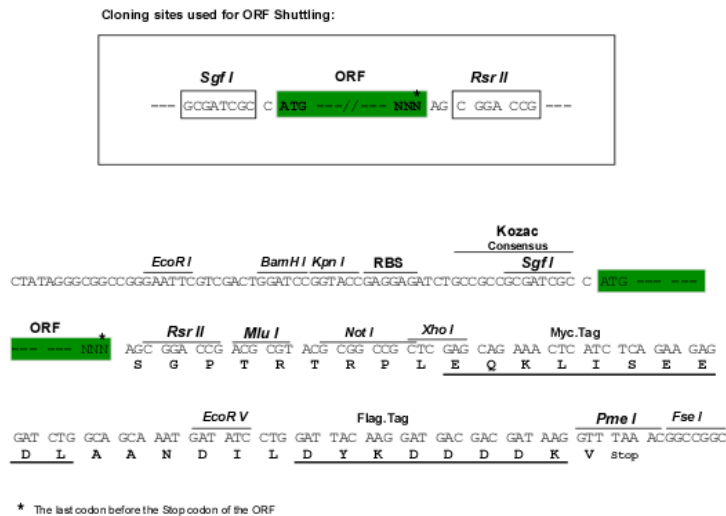
Protein Sequence: >RC230744 representing NM_001168235
 Red=Cloning site Green=Tags(s)

MAGASRHPTGTPRQLLVALACLLL SRPALQGRASSLGTEPD PAL YL PARGALDGT RPDGPSVL IANPGLR
 VPLGRSLWLDPLRDLVIGVQPGDRCEVTVLDALPRLK GALSPRRFPCTFGPRQVQYTHFGSHSPGRARVL
 LQLRYDAPHTHLVLPFTLAVDLVFSQLELVTRNRPLVVEKLR SWSRAIDRRVLDFA SLKSGATATRRCL
 TPLPHEDGPLPKYGR L VDAVGAPLPRGKGVDC EAF LRAGVRYQHTATSSPNRDYVPM MVELLGPEGQDAG
 SAGVLR EHFQLLVIRGGAENTPPRPSFMATMMMEVDPLVLTALTPDALAAEDVESDPGDLVFNILNAP
 THPPGHGQQGGYVSTDDPLGLPVSF FTQQELRELK IAYQPPAENSHGERLFQLELEVVDGDGAASDPFA
 FMVTVKSMNTLVPVASHNRGLVLFEGQSRPLSSTHSIPI SDKDNLEEVKMAAVRGLRHGQLVVF GAPAGC
 KYFTPADLAAGR VVYQHDGSNTYSDNII FRMEDGHHQVDFL FPLTILPV DDEPPMVNTNTGLS LTEGQVV
 QISPFVLSATDIDSEDSTIHFVLENQPLKGN EEEEPQWELAPGSSSHSGHYLGDLLLQQAELPLSTED EDWH
 YMEKEGLYEKVTEWLQRDIMEGR LFYRHLGPHSPQSV MVQLAFHVQDDHDPNL SKQHIFTIKVQPV DI
 LSPQLYPGTTLEMTVQEYQLTHFQKNFLRYIDQSD DQNLWYLLTLP TDTDGNHQVRAGEIVL TDSPT
 LIMHFTQAQVNQHKVAYQPPQKLG IAPRVVQFTYQVEDAAGNSVPGTFTLFLQPVDNQ PPEVTNRGFAIL
 EGGSFNLSSNELHVTDPDIDQIVF ILVRGPQHGLQYFKRCMVPGESFMQADVINGSVYQHGRDQTT
 TSDTFHLEVSDGVHHIPITIPISVHPNVANRSPRISLRSSSLLDV SIDVLENKATEITMGVIHGKRKDVG
 DLMLSFIVKDSPKLGTILVNGLP TERFTQEDL INGRVAYAHTAGEVGFQKQHD AFSLILSKDSYQWV VGN
 SII EKVVQVTVLPVDNVGPKV FVGESFIVYEGEKNSL TLQHLHVEDVDTHQDELLCTVTSQPASGYLEK
 IASAPGSKMSQSGSPI SAFSLRDIQVRHIN YVQSIHKGV EPQEDQFTFYCS DGINFSPNVFFPIIILPTN
 DEQPKLFAHEFKVLE GMSLVIDTQLLNGADADLP NELHFQLTALPRHGR I IQQLATG SQPIHSFTLKEI
 QEASTIVYEHDDSETKEDSFEVWLDGKHTTHR KVP I VVTLV DDETPHLTVN NGLKVEKGHSEIITNRIL
 KATDLSDDKSLSFVLHSGPQQGLLQRLR KPRGEVRN NLTLGMNFTQDEINRGLICYIHTGQEGIVDIK
 FDVTDG VNTLTDHYFYVTIGNLDSVFPEV I SKRITLIEGARVTLTNNLLTNSDINSSEHHFSITR APSL
 GHLESSDYAGEPIASFTQLQLASNKISYVHTSNDEKKMDSFEFQVIGELYPVFRTRIFITDVDNKKPIL
 TIHRLTLQKEDSQLITLLELTVEDSDTPDDLILFTITQVPMHGKILYNGSRPVTTFTKQDLNKNLISYKH
 DGSETTEDSFSLTVTDGHTDFYVLPDTALATHKQVMRVQIRSLDNRLPQITTRNGAPALKRLHTGHMG
 FLITSKSLKAEDQDSPHRL LKYK VTRGPEHGF I IKTGLGNQSTRVFTQADIDEMKISYVLNEGSNASKDI
 FYFSVEDNNGNKL TNQPFHLNWAWIC LEKEYYIVDEDSTFLEVTLTRR GYLGETSFISIGTKDETAKKDK
 DFKWKTNKQIQFNPGQTATWRVRIIPDNEYETSETFQIILSEPLMAVLEFP EMATVEIVDPGDESTVYI
 PEAEYKIEEDIGELLIPVRRSGDASQELIVICSTRQGSATGTISSTVLFSDYISR PEDHTSILHFDKNET
 QKTCQVLIIDDSL YEEEEFSVSLR L P VGGQLGARFP TTKVTILADRYDEPVLHFGDAEYHVNESARYVE
 VCVWRRGTDLSQPSSIAVRSRSEQESA EAGTDYVGISRNLDFA PGV RMQTFQVTILDDL GQPTLEGPEK
 FELLQMPMGAVLGEPNKTTIFIEDTITDCKQSACSSF

SGP TRRRLEQKLISEEDLAANDILDYKDDDDKV

Chromatograms: https://cdn.origene.com/chromatograms/mk8036_e01.zip

Restriction Sites: SgfI-RsrII

Cloning Scheme:


ACCN: NM_001168235

ORF Size: 6417 bp

OTI Disclaimer: The molecular sequence of this clone aligns with the gene accession number as a point of reference only. However, individual transcript sequences of the same gene can differ through naturally occurring variations (e.g. polymorphisms), each with its own valid existence. This clone is substantially in agreement with the reference, but a complete review of all prevailing variants is recommended prior to use. [More info](#)

OTI Annotation: This clone was engineered to express the complete ORF with an expression tag. Expression varies depending on the nature of the gene.

Components: The ORF clone is ion-exchange column purified and shipped in a 2D barcoded Matrix tube containing 10ug of transfection-ready, dried plasmid DNA (reconstitute with 100 ul of water).

- Reconstitution Method:**
1. Centrifuge at 5,000xg for 5min.
 2. Carefully open the tube and add 100ul of sterile water to dissolve the DNA.
 3. Close the tube and incubate for 10 minutes at room temperature.
 4. Briefly vortex the tube and then do a quick spin (less than 5000xg) to concentrate the liquid at the bottom.
 5. Store the suspended plasmid at -20°C. The DNA is stable for at least one year from date of shipping when stored at -20°C.

RefSeq: [NM_001168235.2](#)

RefSeq ORF: 6420 bp

Locus ID: 166752

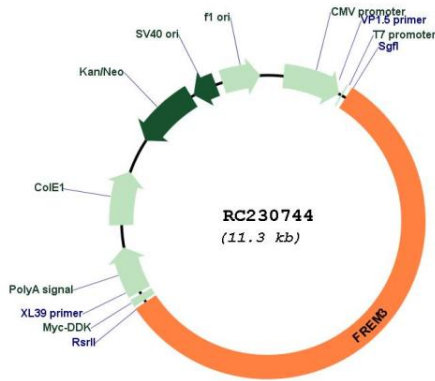
UniProt ID: [P0C091](#)

Cytogenetics: 4q31.21

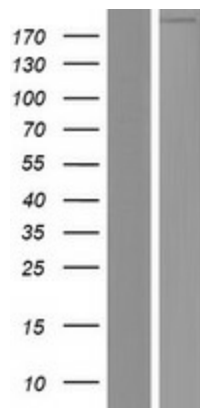
MW: 238.6 kDa

Gene Summary: This gene encodes an integral membrane protein containing numerous CSPG (chondroitin sulfate proteoglycan element) repeats and Calx-beta domains. The protein belongs to the family of FRAS1/FREM extracellular matrix proteins and may play a role cell adhesion. [provided by RefSeq, Feb 2017]

Product images:



Circular map for RC230744



Western blot validation of overexpression lysate (Cat# [LY433743]) using anti-DDK antibody (Cat# [TA50011-100]). Left: Cell lysates from untransfected HEK293T cells; Right: Cell lysates from HEK293T cells transfected with RC230744 using transfection reagent MegaTran 2.0 (Cat# [TT210002]).