

Product datasheet for RC230712

GPRASP1 (NM_001184727) Human Tagged ORF Clone

Product data:

Product Type:	Expression Plasmids
Product Name:	GPRASP1 (NM_001184727) Human Tagged ORF Clone
Tag:	Myc-DDK
Symbol:	GPRASP1
Synonyms:	GASP; GASP-1; GASP1
Vector:	pCMV6-Entry (PS100001)
E. coli Selection:	Kanamycin (25 ug/mL)
Cell Selection:	Neomycin
ORF Nucleotide Sequence:	>RC230712 representing NM_001184727 Red=Cloning site Blue=ORF Green=Tags(s)

TTTTGTAATACGACTCACTATAGGGCGGCCGGAATTCGTCGACTGGATCCGGTACCGAGGAGATCTGCC
GCCGCGATCGCC

ATGACTGGGGCAGAGATTGAGTCTGGTGCCAGGTCAAGCCTGAAAAGAAGCCTGGGAAGAGGTTGTAG
GTGGGGCTGAGATAGAGAATGATGTCCTCTGGTGGTCAGACCCAAGTTAGGACCCAGGCCAGATAAT
GCCTGGGGCAAGGCCAAGAATAAGTCCAAGTTATGCCTGGAGCAAGCACCAAAGTTGAGACAAGTGCA
GTGGGTGGGGCAGCCCTAAGAGTAAGGCCAAGGCAATACCTGTTTCACGATTTAAGGAAGAAGCCAGA
TGTGGGCTCAGCCAGGTTTGGTCTGAAAGATTGTCTAAGACAGAGAGAAACTCCAGACCAATATCAT
AGCCTCTCCACTTGTCTAGTACTGATTCTGTCTTGGTTGCTAAAACAAAGTACCTGTCTGAGGATAGAGAA
CTGGTTAATACAGACTGAGAGCTTCTCTAGAAGGAAGGCCATTACCAAGCAGGATCCAGCCTTCTT
TTAGGTCAAAGGAGGAGACCAATATGGGGTCTGGTGTCTCCTAGGCCTACATCCAAACAAGAAGCCTC
TCCTAATTCTGATTTCAAATGGGTAGACAAATCTGTGAGTTTCTGTTCTGGAGTGGAGATGAGGTCCT
GCAAAATTTCTCCTGGGAATAGGGTAAAAGACAGTAACAGATCCATGCACATGGCCAATCAAGAGGCTA
ATACCATGTCTAGTCCCAAATCAACAGGAGCTCTATATTGCATCTAGTTCTGGTTCTGAGGATGAGTC
TGTTAAGACACCCTGGTTCTGGCCAGAGATAAAACCAATACCTGGTCTGGGCCAGGGAAGATCCCAAT
AGCAGGTCAGGTTTAGGTCTAAGAAAAGAGTCTATGTTGAATCAAGTTCTGGATCTGAGCATGAAGACC
ATTTGGAGTCTGGTTTGGGGCTGGAAAGGAGGCCAAATTCAGGTCCAAATGAGAGCTGGGAAGGAGGC
CAATAACAGGGCCAGGCACAGGGCCAAGCGAGAAGCTTGCAATGATTTTCATGCCTGGTCTATAGATGTA
ATTAAGAAAAGAGTCTGTTTCTGGCCTGAAGAAAATGCTAATACCTTTTCAAGGCCCATGATCAAGAAA
AGGCCAGGGCCAGAGCAATGACAAAGGAAGAGGCCAAAACCAAGGCCGAGCCAGGGCCAAGCAAGAAGC
CAGGTGAGAGGAGGAAGCCCTCATTGGGACCTGGTTCTGGGCTACAGACGAGTCCAGCATGCCAGATGAA
GCCAGCATAGAGTCCAGTCTACAAGTGGAGGATGAGTCCATAATTGGGAGTTGGTTCTGGACTGAAGAAG
AGGCCAGTATGGGGACTGGGGCTAGCAGTAAATCCAGACCAAGGACTGATGGGGAGCGTATTGGTGATTC
CTTATTTGGGGCTAGGAAAAGACCAGTATGAAAAGTGGGGCTGAGGCCACCTCTGAATCTATACTAGCA
GCTGATGATGAACAGGTCATTATTGGTTCTGGTCTGGGCTGGTGAAGAGGTCACCAAGAGGCTGAGG



[View online >](#)

AAGAGACCATTTTTGGGTCTGGTCTGGGTCATTGATGCGGCCAGTGTGGAATCTGGTGTGGGGTCAG
CTGTGAGTCCAGGACAAGGTCTGAGGAAGAAGAGGTCAATGGTCCCTGGTTTTGGTCTGGAGAACAAGTT
GATATAGAGGCTGGAATCGGAGAAGAGGCCAGGCCAGGAGCTGAAGAAGAGACAATTCGGGTCCTGGT
TTTGGGCTGAAAACCAGACCTATATGGATTGTAGGGCTGAAACTAGCTGTGACCCATGCAAGGGGCTGA
GGAGGAGGAGCCATTATTGGGTCCTGGTTTTGGACCAGAGTGAAGCTTGTGTGGAGGGTGATGTCAAC
AGCAAGTCTAGCCTGGAGGACAAGGAAGAGGCCATGATACCATGTTTTGGAGCCAAGAAGAGGTCAGTA
TGAAGCATGGGACTGGTGTGATGCAGATTTATGGCAGGGGCTGAGGAGACCAATAATAAGTCTTGCTT
CTGGGCAGAAAAAGAACCCTGTATGTATCTGCCGGTGGAGGAAGTTGGAAGTCTAGGCCAGAGGAGGAA
GAGGACATTGTCAATTCGTGGTCTGGTCCAGAAAATACACAAAGCCAGAGGCCATTATAGGGTCTGGT
TATGGGCTACAGAAGAGAGTAATATAGATGGGACTGGAGAAAAGGCCAAGTTACTGACTGAAGAGGAGAC
CATAATCAATTCCTGGTCTGGAAAAGATGAAGCCATTCAGAGGCTACTGACAGAGAAGAGTCCAGG
CCAGAAGCTGAGGAGGGGACATTATTGGTCTTGGTCTGGGCTGGAGAAGAGGACAGACTAGAGCCAG
CTGCTGAGACTAGAGAAGAAGACAGGCTAGCAGCTGAGAAAAGAGTATTGTTGGTCTGGTTTGGGGC
CAGAGAAGAGACCATTAGAAGAGAGGCTGGTCTTGCAGCAAATCCAGTCTAAAGCTGAAGAGGAAGAA
GTCATTATTGGTCTGGTCTGGGAAGAAGAGGCCAGTCCGGAGGCAGTGGCAGGAGTCCGCTTTGAGT
CAAAGCCTGGGACTGAGGAGGAAGAAATCACTGTTGGGTCCTGGTCTGGCCTGAAGAAGAAGCCAGTAT
ACAGGCTGGATCTCAGGCAGTAGAGGAAATGGAGTCAGAGACTGAAGAGGAAACCATTTTTGGGTCCTGG
TTCTGGGATGAAAAGAAGTCAAGTGAAGAAGCAGGACCATGCTGTGTATCCAAGCCAGAGGATGATGAAG
AGATGATTGTTGAGTCTGGTCTGGTCTAGAGACAAAGCCATTAAGGAACTGGAAGTGTGGCCACCTG
TGAGTCCAAGCCAGAAAATGAGGAAGGGGCCATTGTTGGGCTTGGTTTGAGGCTGAAGATGAGGTAGAT
AACAGGACTGACAATGGAAGCAACTGTGGTCCAGGACATTAGCTGATGAAGATGAGGCCATAGTGGGGT
CCTGGTCTGGCAGGAGATGAGGCCATTTGAATCAAATCCTAGCCCCGTGTTGAGGGCCATTTGCAG
GTCCAGTGTTCAGTTGAACAGGAGCCTGATCCTCACGAGGCCCTCAGAGTTGGGAGGAGTCACTGTT
CAGTTCAAGCCTGGTCCATGGGGTAGGGTCCGCTTCCCATCTATAAGCCCCTTTAGATTTCCGAAAGAGG
CAGCATCTTTATTCTGTGAAATGTTGGGGCAAACCCAGGAACATGGTACTTAGCCAGAGGGGAAGA
TCAGGAATCTTTGCTTACGCTGATCAGCCTAGTCTGAGTTCCTCATTTCAGTATGATCCTTCTACAGG
TCAGTCCAGGAAATTCGAGAGCATCTTAGGGCCAAGGAGAGTACAGAGCCTGAGAGTTCATCCTGTAAT
GCATACAATGTGAGCTGAAAATGGTCTGAAGAGTTGAAGAAGTCTTTTATTAATGAAAAAATTCG
GGATCCTTTTATTCATGAAATATCTAAAATCGCAATGGGTATGAGAAGTGCTTCTCAATTTACCCGAGAT
TTCATTCGAGATTCAGGTGTTGTCTCACTATTGAAACCTTGCTTAATTATCCGCTCCTCCGAGTTAGAA
CAAGTTTTTTGAAAATATGATTCGCATGGCCCCACCTTATCCGAATCTAACATAATTCAGACATACAT
ATGTAAAGTGTGTGAGGAAACCCTTGCTTATAGCGTGGATCCCCGGAACAGCTGTCTGGAATAAGGATG
ATTAGACATCTCACTACTACTACTGACTATCACACACTGGTTGCCAATTATATGTCTGGGTTTCTCTCCT
TATTAGCTACAGGCAATGCCAAAACAAGGTTTCATGTTTTGAAAATGCTACTGAATTTGTCTGAAAATCT
TTTCATGACAAAAGAAGTACTCAGTGTGAGCAGTGTGAGAAATTTATAGGCCTCTTTAACAGGGAAGAG
ACAAATGACAATATTCAAATTGTTCTTGAATATTTGAGAATATTGGCAACAATACAAAAAGAAAACAG
TGTTCTCTGATGATGATTTCAATATTGAGCCGCTTATTCTGCATTCCACAAAGTTGAGAAATTTGCTAA
GGAAGTCAAGGCAAAACAGACAATCAAATGACCCTGAAGGGGACCAAGAAAAT

ACGCGTACGCGCGCCTCGAGCAGAACTCATCTCAGAAGAGGATCTGGCAGCAAATGATATCCTGGATT
ACAAGGATGACGACGATAAGGTTTAA

Protein Sequence: >RC230712 representing NM_001184727
 Red=Cloning site Green=Tags(s)

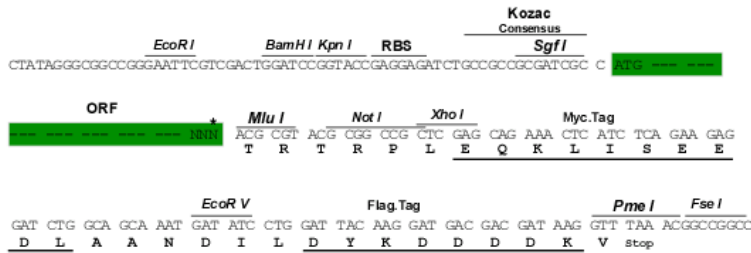
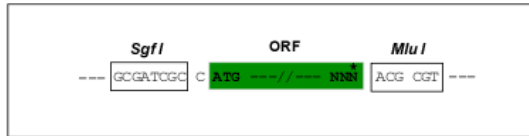
MTGAEIESGAQVKPEKKPGEEVVGGAIEIENDVPLVVRPKVRTQAQIMPGARPKNKSKVMPGASTKVETSA
 VGGARPKSKAKAIPVSRFKEEAQMWAQPRFGAERLSKTERNSQTNIIASPLVSTDSVLVAKTKYLS
 EDRELVNTDTESFPRRKAHYQAGFQPSFRSKEETNMGSWCCPRPTSKQEASPNSDFKWVDKSVSSLFWSGDEVT
 AKFHFGNRVKDSNRSMHMANQEANTMSRSQTNQELYIASSSGSEDESVKTPWFWARDKNTWSPREDPN
 SRSRFRSKKEVYVESSSGSEHEDHLESWFGAGKEAKFRSKMRAGKEANNRHRARAKREACIDFMPGSIDV
 IKKESCFWPEENANTFSRPMIKKEARARAMTKEEAKTKARARAKQEARSEEEALIGTWFWATDESSMADE
 ASISSLQVEDESIIGSWFWTEEEASMGTGASSSRPRTDGERIGDSLFGAREKTSMTKGAEATSESILA
 ADDEQVIIGSWFWAGEEVNQAEETIFGSWFVVIDAASVESGVGVSCSRTRSEEEVIGPWFWSGEQV
 DIEAGIGEEARPGAEETIFGSWFAENQTYMDCRAETSCDTMQGAEETPIIGSWFWTRVEACVEGDVN
 SKSSLEDKEEAMIPCFGAKEEVSMMKHGTGVRFRMAGAEETNNKSCFWAEKEPCMPYAGGGSWKSRPEE
 EDIVNSWFWSRKYTKPEAIIGSWLWATEESNIDGTGEKAKLLTEETIINSWFWKEDEAISEATDREESR
 PEAEEDGIIGSWFWAGEEDRLEPAAETREEDRLAAEKEGIVGSWFGAREETIRREAGSCSKSSPKAE
 EEEVIGSWFWEEEAPEAVAGVGFESKPGTEEEITVGSWFWPEEEASIQAGSQAVEEMESETEETIFGSW
 FWDGKEVSEEAGPCCVSKPEDDEEMIVESWFWSRDKAIKETGTVATCESKPENEGAIVGSWFEAEDEV
 NRTDNGSNCGSRTLADDEAIVGSWFWAGDEAHFESNPSVFRACRSTCSVEQEPDPSRRPQSWEVTV
 QFKPGPWGRVGFPSISPRFRPKAAASLFCMFGGKPRNMVLSPEGEDQESLLQPDQPSPEFPFYDPSYR
 SVQEIREHLRAKESTEPSSNCIQCELIKIGSEEFELLLLMEKIRDPFIHEISKIAMGMRASQFTRD
 FIRDSGVVSLIETLLNYPSSRVRTSFLNMI RMAPPYPLNIQTYICKVCEETLAYSVDSPEQLSGIRM
 IRHLTTTDDYHTLVANYSGLFLLLATGNAKTRFHVLKMLLNLSENLFMTKELLSAEAVSEFIGLNFREE
 TNDNIQIVLAIFENIGNNIKKETVFSDDDFNIEPLISAFHKVEKFAKELQGKTDNQNDPEGDQEN

TRTRPLEQKLISEEDLAANDILDYKDDDDKV

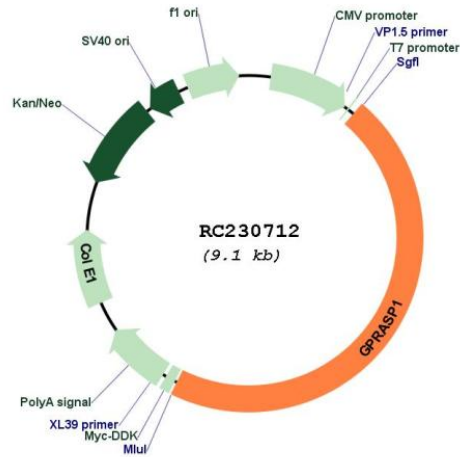
Restriction Sites:
Cloning Scheme:

SgfI-MluI

Cloning sites used for ORF Shuttling:



* The last codon before the Stop codon of the ORF

Plasmid Map:


ACCN: NM_001184727

ORF Size: 4185 bp

OTI Disclaimer: The molecular sequence of this clone aligns with the gene accession number as a point of reference only. However, individual transcript sequences of the same gene can differ through naturally occurring variations (e.g. polymorphisms), each with its own valid existence. This clone is substantially in agreement with the reference, but a complete review of all prevailing variants is recommended prior to use. [More info](#)

OTI Annotation: This clone was engineered to express the complete ORF with an expression tag. Expression varies depending on the nature of the gene.

Components: The ORF clone is ion-exchange column purified and shipped in a 2D barcoded Matrix tube containing 10ug of transfection-ready, dried plasmid DNA (reconstitute with 100 ul of water).

Reconstitution Method:

1. Centrifuge at 5,000xg for 5min.
2. Carefully open the tube and add 100ul of sterile water to dissolve the DNA.
3. Close the tube and incubate for 10 minutes at room temperature.
4. Briefly vortex the tube and then do a quick spin (less than 5000xg) to concentrate the liquid at the bottom.
5. Store the suspended plasmid at -20°C. The DNA is stable for at least one year from date of shipping when stored at -20°C.

RefSeq: [NM_001184727.2](#)

RefSeq ORF: 4188 bp

Locus ID: 9737

UniProt ID: [Q5JY77](#)

Cytogenetics: Xq22.1

Protein Families: Druggable Genome

MW: 157.3 kDa

Gene Summary: This gene encodes a member of the GPRASP (G protein-coupled receptor associated sorting protein) family. The protein may modulate lysosomal sorting and functional down-regulation of a variety of G-protein coupled receptors. It targets receptors for degradation in lysosomes. The receptors interacting with this sorting protein include D2 dopamine receptor (DRD2), delta opioid receptor (OPRD1), beta-2 adrenergic receptor (ADRB2), D4 dopamine receptor (DRD4) and cannabinoid 1 receptor (CB1R). Multiple alternatively spliced transcript variants encoding the same protein have been identified. [provided by RefSeq, May 2010]